

## Sailing Instructions

(Course areas amended 12th March 2013)

# XXXX SAIL PARADISE REGATTA 2013

Incorporating the  
**Queensland IRC State Championships  
& Go To Blazers Regatta**

**Southport, Queensland  
15th – 17th March 2013**

**Hosted by Southport Yacht Club**



## 1 RULES

- 1.1 The regatta will be governed by the rules as defined in the 2013 – 2016 Racing Rules of Sailing (RRS) of the International Sailing Federation (ISAF), the Yachting Australian Special Regulations Part 1, the current class rules of each Class. For yachts entered in the IRC Division, the IRC Rules 2012 Parts A, B and C shall apply.
- 1.2 Except as a result of a rating protest, or to correct a rating office error, no changes to an IRC yacht's TCC will be permitted after 1700 hrs 14<sup>th</sup> March 2013.
- 1.3 Attention is drawn to the RRS Part 1 and especially drawn to **Fundamental Rule 4** which states "The responsibility for a boat's decision to participate in a race or to continue racing is hers alone"
- 1.4 The Organising Authority may provide sponsors' logos. These will be adhered to each side of the hull, no more than two metres from the bow, for the duration of the event. Replacement logos may be available at the Regatta Office.
- 1.5 Each yacht shall be crewed by at least two persons over the age of eighteen.
- 1.6 A yacht chartered or on loan may carry national letters or sail numbers in contravention of her class rules. A yacht without identification numbers on the mainsail, headsail and spinnaker shall display bow numbers on each side of the hull, placed no more than one metre from the bow, for the duration of the event. Bow numbers may be available at registration. This amends RRS 77.
- 1.7 RRS 50.2 is amended by adding an extra sentence to read "Fixed and retractable spinnaker poles not attached to the foremost of the masts will be permitted for the purpose of setting asymmetrical spinnakers".
- RRS 51 is amended by deleting the first sentence.
- 1.8 Yachts shall NOT carry anchors protruding beyond the bow whilst racing.
- 1.9 When racing on Courses 1 to 3 only (windward / leeward courses), RRS 44.2 is amended in that only "One Turns Penalty" is required except for infringements that occur within the zone.

## 2 SAFETY

- 2.1 Yachts shall comply with Category 5 (YA Special Regulations, Part 1).
- 2.2 All yachts shall carry sufficient fuel at the start of each race for two hours of motoring.
- 2.3 The Race Committee may inspect any yacht at any time for compliance with safety regulations.
- 2.4 Attention is drawn to YA Special Regulation 1.02 – Owner's Responsibility.

## 3 NOTICES TO COMPETITORS

- 3.1 Notices will be posted on the Official Notice Board located outside the Regatta Office, Southport Yacht Club.

## 4 CHANGES TO THE SAILING INSTRUCTIONS

- 4.1 Any changes to the Sailing Instructions will be posted before 0830 hours on the day of the race affected, except that the starting vessel may signal an oral change to sailing instructions on the water by displaying Code Flag "L" and announcing the change on the relevant Race Channel.

## 5 SIGNALS MADE ASHORE

- 5.1 Signals made ashore will be displayed on the flagstaff at the Southport Yacht Club.
- 5.2 A Warning Signal will not be made less than 45 minutes after signal "AP" is removed. This amends RRS Race Signals.

## 6 Classes

- 6.1 Class flags will be:
- |                              |                                     |
|------------------------------|-------------------------------------|
| <b>IRC Racing Division 1</b> | Numeral Pennant "1"                 |
| <b>IRC Racing Division 2</b> | Numeral Pennant "2"                 |
| <b>PHS</b>                   | Numeral Pennant "3"                 |
| <b>Blazers</b>               | Blazer logo on a white background   |
| <b>Off The Beach Cats</b>    | Orange M on a lime green background |
- 6.2 A Class requires at least Five (5) entries. In the event that less than 5 entries are received to form any one division, the Race Committee may determine the disposition of any entries received for that Class, or retain the Class.

## **7. SCHEDULE OF EVENTS**

7.1

<b>DATE</b>	<b>CLASS</b>	<b>EVENT</b>	<b>Time of 1st WARNING SIGNAL</b>
<b>Friday 15th</b>	IRC Divisions 1 & 2	Race 1- Passage Race	1055hrs
<b>Saturday 16th</b>	IRC Divisions 1 & 2	Races 2, 3 & 4 - W/L Course Area "A"	1055hrs
	Blazers & OTB Cats	Races 1, 2 & 3 - W/L Course Area "B"	
	PHS	Race 2 - Passage Race Course Area "A"	
<b>Sunday 17th</b>	IRC Divisions 1 & 2	Race 5, – W/L Course Area "A" Race 6 – Passage Race	1055hrs
	Blazers & OTB Cats	Races 4, 5 & 6 - W/L Course Area "B"	
	PHS	Race 3 - Passage Race Course Area "A"	
	Presentation of Prizes – Southport Yacht Club		Asap after racing

The race committee may change the schedule at any time

7.2 On the last scheduled day of the regatta no Warning Signal will be made after 1530 hrs.

### **8 RACING AREA**

8.1 Racing will be conducted on the waters of the Pacific Ocean off Southport. Chart AUS 256 covers the racing area. Blazers & OTB Cats will be on Course Area "B" all other yachts shall be on Course Area "A"

### **9 COURSES**

9.1 The course to sail will be selected from those shown in Appendix "A" and will be indicated by numeral board from the Starting Vessel.

9.2 For courses 1 to 3, the Race Committee Boat will show a board display the approximate compass bearing from the starting line to Mark 1.

### **10 MARKS**

10.1 Descriptions of marks are detailed in Appendix "A".

### **11 THE START**

11.1 The divisional order of starting will be posted on the Notice Board by 0830 hrs each day.

11.2 In addition to the requirements of RRS 29, the Race Committee MAY call yachts on the designated course VHF channel.

11.3 The starting line will be a line between the signal mast displaying an orange flag on the Starting Vessel and a mark to be left to PORT, set at approximately 90 degrees to the direction of the first mark.

11.4 The approximate location of the Starting Vessel may be broadcast on the relevant race VHF Channel not more than 20 minutes before the first scheduled warning signal.

11.5 When more than one race is to be sailed on one day, IC Flag "AP" will be flown on the Committee Vessel between races.

### **13 TIME LIMITS**

- 13.1 The time limits will be as follows:  
Course Area "A" Courses 1 to 3 2.5 hours  
Course Area "B" Courses 1 to 3 70 Minutes  
All other courses 6 hours or sunset whichever is the earliest
- 13.2 Boats still racing when the time limit expires will be scored points equal to the number of boats finishing within the time limit plus a score of 30% of the number of starters rounded to the nearest whole number, but no more points than the number of starters. This changes RRS 35, A4.2 and A5.

#### **14 THE FINISH LINE**

- 14.1 The Finishing Line area will be approximately the same area as the Starting Line.
- 14.2 The Finish line will be a line between the signal mast displaying an orange flag on the Finishing Vessel, and the finishing mark.
- 14.3 The finishing mark for the Passage races will be laid inshore of the finishing boat.
- 14.4 Finish times will only be allocated to the sail number or bow number shown as a boat crosses the finish line. If the Sail or bow number is not registered for this event the boat will be scored DNF for this race. This alters RRS A5

#### **15 PROTESTS**

- 15.1 Protests will be lodged at the SYC office within 1.5 hours of the finish time for the last finishing yacht in the last race for the day for the protesting yacht's division. Protest forms are available from the SYC office.
- 15.2 Protests will be heard at SYC as soon as practical after the close of protest time. The schedule of hearings will be posted on the official notice board. In accordance with RRS 64.1(a) the protest committee may make any determination it decides is equitable for the fleet.
- 15.3 Breaches of Sailing Instructions 1.5 and 1.8 are protestable by the Race Committee only and will not be grounds for protest by another competitor. (This amends RRS 60.1)
- 15.4 On the last day of the regatta a request for reopening a hearing will be delivered:-
- within the protest time limit if the party requesting reopening was informed of the decision on a previous day.
  - no later than 30 minutes after the party requesting reopening was informed of the decision on that day. (amends RRS 66).

#### **16 ARBITRATION**

- 16.1 The protest committee may offer a short arbitration hearing which may be heard prior to a protest hearing (affecting Rule 63). After the written protest form is properly lodged, one representative from each boat will meet with the arbitrator, no witnesses will be permitted. Protests not resolved by arbitration will be lodged with the Protest Committee.
- 16.2 A boat that accepts fault at an arbitration hearing will be penalised by having her race score increased by 25% of the difference between the boats finishing score and the score for DSQ in her division or class, rounded to the nearest whole number. All other boats scores will remain the same. Once accepted, this decision is not subject to reopening or appeal. This alters RRS 63, 64.1( a ), 66 and Appendix A.
- 16.3 The arbitrator may be a member of any subsequent Protest Committee.

#### **17 SCORING & HANDICAPS**

- 17.1 The series will be scored as provided in Appendix A of the RRS using the low point system except if there are five races or less all races will count to overall points. One completed race will constitute a series.
- 17.2 For Performance Handicaps System (PHS) the handicaps may be adjusted after each race.
- 17.3 Handicaps will be posted on the official by 2000 hrs on Thursday 14<sup>th</sup> of March. Any changes to PHS will be placed on the official notice board before 0930 hrs on the day they take effect.

17.4

<b>Class</b>	<b>Handicap System</b>	<b>No. of Races</b>
IRC Racing	IRC	6
PHS	PHS	2
Blazer	Scratch	6
Off The Beach Catamarans	VYC	6

## **18 RADIO**

- 18.1 All yachts shall carry an operational VHF radio at all times during the series.
- 18.2 The VHF Channel for racing on Course Area "A" will be Ch. 74.
- 18.3 The VHF Channel for racing on Course Area "B" will be Ch. 77
- 18.4 The Race Committee may broadcast race information before and during each race. Any such communication will not be deemed as outside help. This Alters RRS 4.

## **19 TROPHIES AND PRIZES**

- 19.1 Trophies and Prizes will be awarded for:
  - First, Second and Third in each division, providing there are 6 or more entries.
  - Division with less than 6 entries if not combined with another division will have trophies awarded to first and second place overall.
  - This will include the presentation of the Sail Paradise Perpetual Trophy which shall be awarded to the overall winner of the on IRC (Combined Div 1 & 2)
  - Daily Division race winners may be awarded prizes at SYC after racing each race day.

## **20 DISCLAIMER OF LIABILITY**

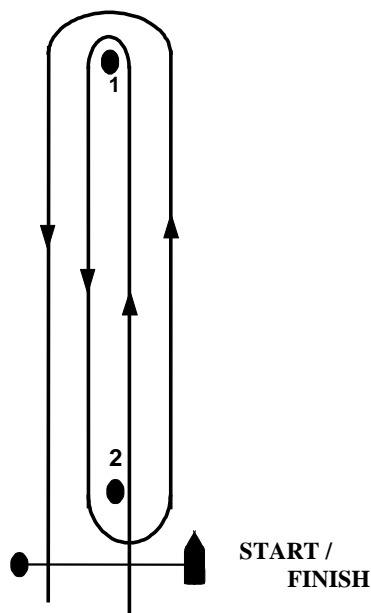
- 20.1 Competitors participate in this regatta entirely at their own risk. See RRS 4, Decision to Race. The organising authority sponsors and their servants and volunteers will not accept any liability for material damage or personal injury or death sustained in conjunction with or prior to, during, or after the regatta.

## APPENDIX "A"

### Windward / Leeward Courses

- A 1 The following course descriptions lists the order in which marks are to be passed and the side each mark is to be rounded.
- A 2 The course to be sailed for each class will be signalled by a Numeral Board displayed from the committee vessel. The course may also be broadcast on the designated course VHF Channel.
- A 3 A board displaying the approximate compass bearing from the committee vessel to Mark 1 and Mark 2 will be displayed from the committee vessel.
- A 4 When changing the position of the next mark, the race committee will lay a change mark(s). Any subsequent marks may be relocated to maintain the original course configuration. Further changes of that mark will revert to the original mark(s).

COURSE SIGNAL	COURSE CONFIGURATION
	All Marks to PORT
<b>1</b>	Start – 1 – Finish
<b>2</b>	Start – 1 – 2 – 1 – Finish
<b>3</b>	Start – 1 – 2 – 1 – 2 – 1 – Finish



#### Course Area "A"

COURSE MARK	MARK DESCRIPTION
Start / Finish Mark	Red cylindrical inflatable buoy
Mark 1	Yellow cube inflatable buoy
Mark 2	Orange cylindrical inflatable buoy
Change of Course	Orange Inflatable buoy marked with black band

#### Course Area "B"

COURSE MARK	MARK DESCRIPTION
Start / Finish Mark	Pink cylindrical inflatable buoy
Mark 1	Black & White checked cylindrical inflatable buoy
Mark 2	Black & White checked cylindrical inflatable buoy
Change of Course	Orange Inflatable buoy

## **Passage Race Courses:**

### **NOTE:**

For all passage race courses a Clearing Mark may be laid as part of the course. The Clearing Mark will be approximately 0.8 mile upwind of the start line. The direction for rounding the Clearing Mark will be indicated by a red flag for port rounding or green flag for starboard rounding hoisted at or before the Warning Signal. If no green or red flag is displayed the Clearing Mark is deleted from the course.

Kirra & Burleigh marks for Passage Races will be Yellow Cubes.

### **Course 4 – Kirra Race (24.3 nm approx)**

<b>Course Mark</b>	<b>Mark Description</b>	<b>Required Side</b>
Starting Line	As described in Sailing Instruction 11	
Clearing Mark	Laid Orange buoy approx .8 nm upwind of Start Line	As signalled
Kirra Mark	Laid Yellow buoy approx S 28° 09.15', E 153° 31.65'	Port
Finishing Line	As described in Sailing Instruction 14	

### **Course 5 – Burleigh - Kirra Race (25.3 nm approx)**

<b>Course Mark</b>	<b>Mark Description</b>	<b>Required Side</b>
Starting Line	As described in Sailing Instruction 11	
Clearing Mark	Laid Orange buoy approx .8 nm upwind of Start Line	As signalled
Burleigh Head Mark	Laid Yellow buoy approx S 28° 5.11', E 153° 27.83'	Port
Kirra Mark	Laid Yellow buoy approx S 28° 09.15', E 153° 31.65'	Port
Finishing Line	As described in Sailing Instruction 14	

### **Course 6 – Burleigh Head Race (13.2 nm approx)**

<b>Course Mark</b>	<b>Mark Description</b>	<b>Required Side</b>
Starting Line	As described in Sailing Instruction 11	
Clearing Mark	Laid Orange buoy approx .8 nm upwind of Start Line	As signalled
Burleigh Head Mark	Laid Yellow buoy approx S 28° 5.11', E 153° 27.83'	Port
Finishing Line	As described in Sailing Instruction 14	

# Course Areas

