

Southport Yacht Club Inc.

Yachting with the Community since 1946



2019/20 Sailing Season
THURSDAY TWILIGHT
DIVISION
SAILING INSTRUCTIONS



THURSDAY TWILIGHT DIVISION– 2019/20 SAILING INSTRUCTIONS



TT – THURSDAY TWILIGHT SERIES	
<u>WINTER Twilight Series</u>	
Thursday Twilight Race 1	Thursday 2 nd May
Thursday Twilight Race 2	Thursday 9 th May
Thursday Twilight Race 3	Thursday 16 th May
Thursday Twilight Race 4	Thursday 23 rd May
Two Handed Race	Saturday 25th May
Thursday Twilight Race 5	Thursday 30 th May
Thursday Twilight Race 6	Thursday 6 th June
Thursday Twilight Race 7	Thursday 13 th June
Thursday Twilight Race 8	Thursday 20 st June
Thursday Twilight Race 9	Thursday 27 th June
Burleigh Bash	Sunday 30th June
Thursday Twilight Race 10	Thursday 4 th July
Ted Elkes Memorial Regatta	Saturday 6th & Sunday 7th July
Thursday Twilight Race 11	Thursday 11 th July
Thursday Twilight Race 12	Thursday 18 th July
Thursday Twilight Race 13	Thursday 25 th July
Thursday Twilight Race 14	Friday 2 nd August
Crab Island Classic	Saturday 10th August
Thursday Twilight Race 1	Thursday 5 th September
Sail Past	Saturday 7 th September
Da\$h 4 Ca\$h & Barts Bash	Sunday 8th September
Thursday Twilight Race 2	Thursday 12 th September
Thursday Twilight Race 3	Thursday 19 th September
Thursday Twilight Race 4	Thursday 26 th September
Bridge to No Bridge	Saturday 12th & Sunday 13th October
Thursday Twilight Race 5	Thursday 3 rd October
Thursday Twilight Race 6	Thursday 17 th October
Thursday Twilight Race 7	Thursday 24 th October
Thursday Twilight Race 8	Thursday 31 st October



THURSDAY TWILIGHT DIVISION– 2019/20 SAILING INSTRUCTIONS



Thursday Twilight Race 9	Thursday 7 th November
Thursday Twilight Race 10	Thursday 14 th November
John McNamara Memorial Race	Saturday 16th & Sunday 17th November
Thursday Twilight Race 11	Thursday 21 st November
Thursday Twilight Race 12	Thursday 28 th November
Thursday Twilight Race 13	Thursday 5 th December
Cook Island Yacht Race	Sunday 8th December
Thursday Twilight Race 14	Thursday 13 th December
<u>SUMMER Twilight Series</u>	
Sail Paradise Regatta	Sunday 6th - Wednesday 9th January
Thursday Twilight Race 1	Thursday 16 th January
Thursday Twilight Race 2	Thursday 23 rd January
Thursday Twilight Race 3	Thursday 30 th January
Thursday Twilight Race 4	Thursday 6 th February
Thursday Twilight Race 5	Thursday 13 th February
Thursday Twilight Race 6	Thursday 20 th February
Thursday Twilight Race 7	Thursday 27 th February
Thursday Twilight Race 8	Thursday 5 th March
Thursday Twilight Race 9	Thursday 12 th March
Thursday Twilight Race 10	Thursday 19 th March
Thursday Twilight Race 11	Thursday 26 th March
Thursday Twilight Race 12	Thursday 2 nd April
Ladies Day Race	Sunday 5th April
Thursday Twilight Race 13	Thursday 9 th April
Thursday Twilight Race 14	Thursday 16 th April

THURSDAY TWILIGHT CLUB CHAMPIONSHIP	
WHOLE SEASON (Includes Spring and Summer Series)	\$ 220.00
WINTER SERIES	\$ 110.00
SPRING SERIES	\$ 140.00
SUMMER SERIES	\$ 140.00



2019/2020 SAILING SEASON - POLICY

CLUB PARTICIPATION RULES

1. Southport Yacht Club (SYC) is a member of Australian Sailing and races are governed by the Racing Rules of Sailing (RRS) of the International Sailing Federation and the Prescriptions and Special Regulations (SR) of Australian Sailing (AS). These may be found at: www.sailing.org/documents/racingrules/index
2. All participating Boats and Operators must comply with The *Transport Operations (Marine Safety) Act 1994* and its subordinate legislation, the *Marine Safety (Domestic Commercial Vessel) National Law Act 2012* (Cwlth) and its subordinate legislation AND The *International Regulations for the Prevention of Collisions at Sea 1972* (COLREGS).
The *Racing Rules of Sailing* (RRS) only applies between participating SYC Competitors for the duration of the event. Should interaction occur with non-participating ships, then COLREGS shall apply to all ships and shall over-ride all other rules.
3. Following participation in any three (3) SYC club races, any owner, skipper or crew of a participating Boat is required to become a member, in the appropriate category, of SYC.
4. It is the responsibility of the person in charge of the Boat to ensure that all crew competing on the boat holds a current membership of AS or equivalent membership of a yachting authority recognised by ISAF. Please visit the Australian Sailing website at <https://www.sailing.org.au/finder/>.
5. The Top Yacht program is used by SYC for its race management software.
6. All members intending to race shall pre-pay and register with a Season Entry or Casual Entry **prior** to racing. Failure to pay the outlined fee and/or register will result in positions not being shown in results. Any member/s **who continually race without paying or registering will be referred to The Club Manager for disciplinary action.**
7. Only current financial members of the Southport Yacht Club Inc. are eligible for a Season Entry.
8. Average points will be awarded for series entries when Club racing is missed due to: volunteering duties as part of our Race Management Crew for ANY race in ANY Division – you must sign in with the Sailing Office and put that you request Average Points for the day's racing. There is no provision for Average Points for competing at Away Regattas.
9. All competitors are reminded of RRS 1.1 Helping Those in Danger; A boat or competitor shall give all possible help to any person or vessel in danger.

RACE ABANDONMENT

1. Any decision to race, postpone or abandon racing in either light weather or inclement weather, will be made by the Sailing Office in consultation with the Vice Commodore of Sail and the relevant Sailing Committee Divisional Representative.
2. For regular club racing the decision to race, postpone or abandon will not be made before 1000 hours on the day of the race unless circumstances dictate that an earlier decision would be appropriate noting:
 - 2.1 Racing will not be started if there is a current Gale (or higher), Tsunami or other severe weather warning that will impact the race area(s).
 - 2.2 Racing may not be started if there is a current Severe Thunderstorm Warning that will impact the race area(s)
 - 2.3 Racing may not be started if there is a Strong Wind Warning in the race area(s).
 - 2.4 For regular club racing the decision to postpone or abandon a race due to light weather will only be made within 60 minutes of the first starting signal.
 - 2.5 Races will only be abandoned after careful consideration of all weather conditions and their likely impact on the race area(s).
3. A decision to race on any given day does not relieve any competitor of his/her obligation under RRS Fundamental Rule 4.



THURSDAY TWILIGHT DIVISION– 2019/20 SAILING INSTRUCTIONS



SAILING COMMITTEE, RACE COMMITTEE & PROTEST COMMITTEE

1. The Vice Commodore of Sail shall recommend the appointment prior to the start of each season, a Sailing Committee which shall include at least one member nominated by each of the divisions sailing in the Club and the Sailing Operations Manager.
2. The Vice Commodore of Sail shall be Chairperson of the Sailing Committee and shall record such decisions and recommendations as passed by a simple majority present at Sailing Committee meetings. Sailing Committee decisions shall be reported to the Board.
3. Quorum for the Sailing Committee shall consist of four members.
4. Quorum for Race & Protest Committee's shall consist of three members.
5. The Sailing Committee shall: determine the sailing programme for the forthcoming season; determine such sailing rules and instructions as are necessary for the conduct of races within the Club; be responsible for conducting point score, championship and special events within the Club and any other sailing event that the Board decides upon from time to time to conduct; and meet at least once a month.
6. Between meetings of the Sailing Committee, the Sailing Officers shall have power to deal with any emergency. Any action taken under this provision shall be reported to the next meeting of the Sailing Committee.
7. **The Race Committee** shall include the Divisional Representative, the Vice Commodore of Sail, a Sailing Officer from the Sailing Office and the RO; or their nominated deputy.
8. **All decisions relating to sailing events shall be deliberated on by the Race Committee.**
9. Protest Committee shall be appointed by the Sailing Office for each hearing session as required.
10. Protest Hearings & Requests for Redress for all club racing (excluding SYC Special Events) will be held on the first Monday of each month at SYC Hollywell from 6pm. Protests will be heard in order of receipt and Parties will be notified of the schedule by email no later than the Friday prior to the Hearing.

DUE PROCESS and HANDICAPS

SYC utilises a democratic *due process* in relation to pertinent Sailing matters that effect our Sailing Community. This *due process* incorporates the Divisional Representatives of The Sailing Committee, the Vice Commodore of Sail and the Sailing Office.

The Top Yacht program is used by SYC for its race management software. The following handicap system is used for the Thursday Twilight Division:

- Pursuit Time Handicap System (PTS)

Please contact the Sailing Office or your Sailing Committee Divisional Representative for further detailed information in relation to handicaps.

Prior to the commencement of all races, Competitor handicaps will be advertised on the SYC website

Existing Boats

At the start of a new season, all PTS will be reviewed based on the performance during the past similar series. If the fleet is altered with additional or loss of a significant amount of vessel/s then a new baseline may need to be set. This review will occur prior to the start of the new season and the new PTS and reasons for the amendment will be available at the SYC Sailing Office on request.

Conditions for all Boats

PTS may be amended if the boat is modified. In accordance with Sailing Instructions, any modifications need to be provided in writing to the SYC Sailing Office 48 hours prior to racing. If such modifications are deemed to be significant, the boat will be assessed and entered as a new boat. Previous results will not be combined in the Series results.

Notification of change of Helmsperson from that on the entry for a Series must be made in writing to the SYC Sailing Office. Failure to comply with the above conditions will result in a PTS adjustment. The SYC Divisional Race Committee will review all results during the following week and If on review



THURSDAY TWILIGHT DIVISION– 2019/20 SAILING INSTRUCTIONS



the PTS falls outside the mathematical constraints of the Top Yacht Program, then a manual adjustment will be made. If such an adjustment occurs, the value and the reasons will be available at the SYC Sailing Office on request. The Vice Commodore of Sail, Divisional Sailing Committee Representative and Sailing Office shall confirm all manual adjustments and the Sailing Office will issue a brief reason for the adjustment containing the series and the date of the change.

New Vessels

A starting PTS will be made on submission of a new vessel's details, as per Vessel Registration form. This starting PTS will be reviewed to confirm that the first PTS is appropriate to allow the TopYacht Program to make the automatic adjustment within its mathematical constraints. If for some reason the PTS fails to be adjusted appropriately, then a manual adjustment may be made.

Handicap Review

Any Competitor may make an application in writing to the Sailing Office to have their Handicap reviewed without prejudice. In their submission, the Competitor must provide detailed reasons and appropriate calculations to validate their request. The Sailing Office will forward their request to the relevant Sailing Committee Divisional Representative and the Divisional Race Committee for their recommendations. Upon receipt of these recommendations, the Vice Commodore of Sail, Sailing Committee Divisional Representative and Sailing Office may then approve or decline the adjustment and the Sailing Office will issue a brief reason by email containing the series and the date of the amendment or declination.

SAILING COMMITTEE DIVISIONAL REPRESENTATIVES:

TT – Thursday Twilight Division:

Ray McMahon 0424 983 270 rayzor911@gmail.com

ID – Inshore Division:

Ross Manning 0408 195 935 fullgoatracing@hotmail.com

ED – Etchells:

Scott McNally 0409 069 197 cracka_sm@bigpond.com

Offshore Division:

David Hows 0431 521 925 oceangemnz@gmail.com

OTBC – Off The Beach Catamaran Division:

Kerry Noyes 0419 660 667 kerry@cubisea.com.au

OTBD – Off The Beach Dinghy Division:

Kelvin Holdt 0414 606 238 kelv_trace@y7mail.com

HANDICAP COMMITTEE:

Ian Ball, Brendan Mann, Chris Noyes



CODE OF CONDUCT SOUTHPORT YACHT CLUB

A person accepts responsibility by becoming a member of Southport Yacht Club and agrees to the consequences of any breach of the code of conduct. These may include: -

- Suspension or termination from the club.
- And/or legal proceedings – civil or criminal for conduct unlawful under State or Federal Law.

KEY PRINCIPLES

Membership of Southport Yacht Club is a privilege that must be safeguarded by the following principles:

Southport Yacht Club seeks to operate in an environment where people show respect for others and their property. Respect is defined as consideration for the well-being of another's body, emotions and possessions, to ensure no damage or deprivation is caused to any of them.

Southport Yacht Club seeks to operate in an environment, which is free from harassment. Harassment is defined as any action directed at an individual or group, which creates a hostile, intimidating or offensive environment.

Southport Yacht Club seeks to operate in a non-discriminatory environment. By this it is meant that where everyone has an equal opportunity and receives a fair go in accordance with the law as well as the Club Rules, By-Laws, procedures and guidelines.

UNSUITABLE BEHAVIOUR

- Not knowingly discriminate against, abuse, harass, ridicule or embarrass anyone covered by this Code of Conduct.
- Be fair, considerate and honest in all dealings with others.
- Treat all persons with respect, dignity and properly regard their rights and obligations.
- Respect the privacy of other persons.
- Refrain from any form of victimisation towards others.
- Must not use offensive language to any member, visitor attending Southport Yacht Club or any of their events. Must not 'sledge' (as in denigrate and/or intimidate) other persons.
- Excessive use of alcohol, acting in a way that becomes a public nuisance or creates a public disturbance is prohibited.
- Liquor Licensing Laws will be followed at all times.
- Persons under the age of eighteen shall not be permitted to purchase or be supplied tobacco from the cigarette vending machine and shall not be permitted to be served or receive alcohol.
- A member will obey lawful directions from a club employee.
- A member will take responsibility for their guests at all times.
- A member will abide by the dress code of the club.
- A member shall not represent the club in any dealings, unless authorised by the club.
- A member shall not tarnish the reputation of the club, officers, Directors, committees, employees, management or bring it into disrepute.
- The use or encouragement of illegal drugs within the premises of Southport Yacht Club is prohibited.
- Assault, or acting with aggression toward any other person is prohibited.



THURSDAY TWILIGHT DIVISION– 2019/20 SAILING INSTRUCTIONS



The Club intends to set the highest standards of excellence by displaying values of:

- Equality – demonstrate awareness of individual rights, opinions and beliefs.
- Demonstrate reliability and be a dependable Club member in all aspects of the club's environment.
- Respect and courtesy must be shown at all times to all Club officials, members and patrons.
- No prejudicial behaviour is to occur.
- Display maturity and demonstrate acceptable social behaviour while at the club or attending any of the club's events.
- Abide by the rules of the Constitution and the By-Laws.
- Be mindful of your actions in relation to individual safety and safety of all others involved in the club.
- Conduct themselves in a proper manner to the complete satisfaction of Southport Yacht Club and its members, so as not to bring themselves into public disrepute or censure.
- Not disclose to any unauthorised person or organisation information that is of a confidential or privileged nature concerning Southport Yacht Club. Not promote, or pass on, exchange or publish information whereby that information may be of a confidential, offensive, scandalous, unsubstantiated or derisive type;
- Understand the possible consequences of breaching Southport Yacht Club's rules and regulations.

CHILDREN

Parent and guardians at all times shall be responsible for the behaviour of their children on club premises, including the beach, marina and car parks. Parents and guardians of children whose behaviour is socially unacceptable shall be requested to remove them from club's premises.

COMPLIANCE

Any alleged breach of the above principles are to be reported to the General Manager for action. The General Manager will determine if there has been a breach and may warn or initiate disciplinary action against the relevant member. Any disciplinary action under the Charter will be in accordance with the Constitution and laws applying to the club.

This code is to be read in conjunction with the Articles, Rules, Constitution and By-laws of the club.

**YOU ARE REMINDED THAT THE PURPOSE OF THIS CODE IS TO PROVIDE YOU WITH
A SAFE AND ENJOYABLE ENVIRONMENT**





THURSDAY TWILIGHT DIVISION– 2019/20 SAILING INSTRUCTIONS



RACING

A minimum of five (5) participants are required to constitute a race. If there are less than the required amount the race may be abandoned.

1. RULES

- 1.1 The series will be governed by the current rules as defined in *The Racing Rules of Sailing (RRS)*.
- 1.1 All yachts shall comply with YA Special Regulations Part 1 - Category 7+.
- 1.2 All skippers shall supply the Sailing Office with a valid 2017-2021 Category 7+ form or higher.
- 1.3 All skippers shall comply with the Transport Operations (Marine Safety) Act 1994 and Regulation. In the event of a reportable Marine Incident the SYC Sailing Officer is to be notified as soon as practical; but no later than 1 hour after the last boat has finished, a copy of the MSQ Marine Incident Report is required to be lodged with the SYC Sailing Office at the same time it is lodged with Maritime Safety Queensland.
- 1.4 The *International Regulations for the Prevention of Collisions at Sea 1972 (COLREGS)* shall apply at all times. The *Racing Rules of Sailing (RRS)* will apply only between those ships that are participating in the event, for the duration of the event. Should interaction occur with non-participating ships, then COLREGS shall apply to all ships and shall override all other rules. This is a condition imposed by Gold Coast Waterways Authority within our Aquatic Event Authority.
- 1.5 RRS Appendix T – Arbitration applies.
- 1.6 All competitors are reminded of RRS 1.1 Helping Those in Danger; A boat or competitor shall give all possible help to any person or vessel in danger.

2. ELIGIBILITY

- 2.1 Twilight races are open to all Monohull and Multihull Yachts (both trailable and fixed keel) on the register of a yacht or sailing club affiliated with Australian Sailing.
- 2.2 Off the Beach classes are not permitted to sail in Twilight races.

3. SAIL RESTRICTIONS

- 3.1 The difference between a headsail and a spinnaker is that the width of a headsail, measured between the midpoints of its luff and leech, is less than 75% of the length of its foot.
- 3.2 The use of a Gennaker, Bloopers, Spinnaker, Code Zero or any other purpose built downwind sail is prohibited.
- 3.3 The headsail must be fully hanked, or attached by means of a luff groove device, to the forestay.
- 3.4 Spinnaker poles and/or whisker poles are allowed for poling out headsails.
- 3.5 Yachts shall use only one mainsail throughout the Race but may change their headsail throughout the Race.
- 3.6 Substitution of damaged or lost equipment will not be allowed unless authorized by the SYC Sailing Officer. Requests for substitution shall be made to the Sailing Office at the first reasonable opportunity.



THURSDAY TWILIGHT DIVISION– 2019/20 SAILING INSTRUCTIONS



4. CHANGES TO SAILING INSTRUCTIONS

Changes to Sailing Instructions will be emailed to competitors on the Thursday Twilight Distribution List and posted on the Southport Yacht Club Website on the Thursday Twilight page not less than sixty (60) minutes before the scheduled start time.

5. SCHEDULE OF RACES

The schedule of races is as per the list at the beginning of these Sailing Instructions.

6. RACING AREA

Attachment A – SYC TWILIGHT RACING AREA shows the approximate location of our racing area.

7. THE COURSES

All courses for the season are identified in Attachment C – SYC TWILIGHT COURSES, including the order in which the marks are to be passed and the side on which each mark is to be passed.

8. MARKS

- 8.1 If any navigational marker is a mark of a course, all boats competing are to maintain a minimum distance of 3 meters from any navigation marker. Any boat involved in a marine incident, which includes a collision with an aid to navigation must report the incident in the official format.
- 8.2 All marks, other than the inflatable cylinder marks as described in course 10 & 11, are IALA Buoyage Navigation Beacons.
- 8.3 When a navigation beacon is nominated as a mark of a course it shall be left in the manner described in the Sailing Instructions.
- 8.4 Where a navigation beacon is to be rounded, due consideration to the weather conditions including tidal effect shall be given.
- 8.5 Areas outside of the intended channel(s) defined by the IALA system beacons north of and including Q(9)15s (Crab Island West Cardinal) are considered an obstruction. For the purposes of this definition, it shall be considered that a competitor has remained clear of the obstruction provided they have left all IALA beacons to their required *side. *Competitors may refer to the MSQ Boating Maps located at <http://www.msq.qld.gov.au/Boating-maps/Gold-Coast-guides> should they require any clarification.



THURSDAY TWILIGHT DIVISION– 2019/20 SAILING INSTRUCTIONS



9. THE START

- 9.1 Races will be started using allocated handicapped start times:
 - 9.1.1 Boats shall start no earlier than their allocated start time. All times are listed as Australian Eastern Standard Time (AEST). Syncing of your clock is recommended at: <http://www.timeanddate.com/worldclock/fullscreen.html?n=47>
 - 9.1.2 A sound signal will be given to any yacht starting early. They will be required to restart, or be scored as On Course Side (OCS). This changes Rule 26.
- 9.2 The first starting signal for racing covered by these sailing instructions shall be considered to be 'not before':

EVENT	TIME
Spring Series (Pursuit)	From 1530hrs
Summer Series (Pursuit)	From 1530hrs
Winter Series (Pursuit)	From 1500hrs

- 9.3 All boats shall keep clear of the start line and not cross in either direction within five (5) minutes prior to their designated start time.
- 9.4 A boat re-starting shall keep clear of a boat starting.
- 9.5 The starting line for Thursday night Twilight Races will be in accordance with Attachment B – SYC MARKS and Attachment C – SYC TWILIGHT COURSES.
- 9.6 A boat starting later than five (5) minutes after her start time will have here CHC reviewed by the Race Committee and Handicap Committee and her next AHC may be adjusted to ensure fairness to all competitors. This will be conducted without a hearing and changes RRS A4.

10. SHORTENED COURSE

All courses may be shortened in accordance with RRS. All courses may be shortened at any mark, including Lateral Navigation Marks.

11. THE FINISH

The finishing line for Thursday night Twilight Races will be in accordance with Attachment B – SYC MARKS and Attachment C – SYC TWILIGHT COURSES.

12. PENALTY SYSTEM

- 12.1 For all boats rule 44.1 is changed so that the Two-Turns Penalty is replaced by a One-Turn Penalty.
- 12.2 Should a boat be deemed OCS by Race Officials no penalty turn will be required but she shall receive without hearing, an additional 5 minutes on elapsed time scoring penalty.

13. TIME LIMIT

- 13.1 The Spring Series time limit for all boats to be finished is 1830 hours.
- 13.2 The Summer Series time limit for all boats to be finished is 1830 hours.
- 13.3 The Winter Series time limit for all boats to be finished is 1800 hours.
- 13.4 Boats failing to finish within the Time Limit will be scored Did Not Finish (DNF) without a hearing. This changes RRS Rule 35.



14. PROTESTS

- 14.1 RRS Appendix T- ARBITRATION applies to all Divisions for SYC Club Racing and all SYC Special Events:
- 14.1.1 A short mediation hearing will be conducted for all protests lodged in accordance with RRS 61 which allege an infringement of a rule of Part 2 or 4. Such hearing will be held as soon as possible after racing.
 - 14.1.2 The time and place of the mediation hearing will be decided by the mediator and such advice may be given verbally.
 - 14.1.3 One representative of each boat shall attend the mediation hearing and no witnesses shall be allowed. The mediator shall decide the manner in which testimony is given.
 - 14.1.4 After taking testimony at a mediation hearing the mediator shall make one of the following conclusions:
 - (a) The protest does not comply with RRS 61 and the protestor may withdraw the protest. This changes RRS 63.1.
 - (b) The matter should proceed to a protest hearing. (This may be because rules other than Part 2 or 4 are or may be involved, or because evidence is too complex or divergent to reach a reasonable and timely conclusion, or due to the apparent severity of the alleged infringement, or for any other reason decided by the mediator.)
 - (c) No rule was broken and the protestor may withdraw the protest. This changes RRS 63.1
 - (d) A rule was broken by one or more of the boats involved and all parties to the mediation agree, the infringing boat(s) may accept a 30% scoring penalty, and if so accepted the protestor shall withdraw the protest.
All other boat scores will remain the same.
 - 14.1.5 If the parties do not agree, the protest shall proceed to a hearing. This changes RRS 63.1
 - 14.1.6 A mediation hearing shall not be re-opened. No conclusion of a mediator shall be subject to appeal or be grounds for redress. Should the protest proceed to a protest hearing then the mediator may be a member of the protest committee. Any evidence given by a mediator during a protest hearing shall be given only in the presence of the parties to the hearing.
- 14.2 Protest forms are available at Reception of the Southport Yacht Club Inc. Main Beach Clubhouse. Protests shall be delivered there within the Protest Time Limit.
- 14.3 The Protest Time Limit is thirty (30) minutes after the last boat has finished in your division. The same protest time limit applies to all protests by the Race Committee and Protest Committee and to request for redress. This changes Rules 61.3 and 62.2.

15. SCORING

- 15.1 The low points scoring system of RRS Appendix A9 will apply.
- 15.2 For a Boat that Did Not Finish (DNF) they shall be scored the number of boats that have signed on for the Race plus 1 point. This Changes RRS Appendix A4.2
- 15.3 For a boat that Did Not Compete (DNC) they shall be scored the number of boats that have signed on for the Race plus 3 points. This Changes RRS Appendix A4.2
- 15.4 Four (4) races are required to constitute a series. When fewer than five (5) races have been completed, all scores shall count.



THURSDAY TWILIGHT DIVISION– 2019/20 SAILING INSTRUCTIONS



- 15.5 When five (5) to eight (8) races have been completed a boat's series score will be the total of her race scores excluding her worst score.
- 15.6 When nine (9) to twelve (12) races have been completed a boat's series score will be the total of her race scores excluding her two (2) worst scores.
- 15.7 When thirteen (13) or more races have been completed a boat's series score will be the total of her race scores excluding her three (3) worst scores.

16. SAFETY REGULATIONS

- 16.1 Requirements are as listed below:
 - 16.1.1 All competitors intending to start shall sign on with Race Control via VHF09 at least five (5) minutes prior to their allocated handicap start time, confirming Boat Name, Sail # and the number of persons on board (P.O.B.).
 - 16.1.2 All helmspersons shall sign off via VHF09 including number of P.O.B. within thirty (30) minutes of completing racing for that session, or later at the discretion of the Race Committee.
 - 16.1.3 Please take consideration of the Race Committee when logging off if they are finishing other competitors.
- 16.2 A boat that retires from a race shall notify Race Control on VHF09 as soon as possible.
- 16.3 Unless in use, no part of the anchor may project forward of the bow at any time whilst racing. Anchors must be available for immediate use in the event of an emergency.
- 16.4 Where lifelines complying with AS SR Part 1 Section 3 Rule 3.12 have not been fitted, all crew shall wear a visible life jacket, as per AS SR Part 1 Section 5.
- 16.5 Boats failing to comply with any of these Safety Regulations be scored DSQ without a hearing.

17. COMMUNICATIONS

- 17.1 Race Control may communicate information to the competing boats during the course of the race. All boats are to monitor VHF09 for the duration of the race.
- 17.2 Except in an emergency, a boat shall neither make radio transmissions while racing nor receive radio communications not available to all boats. This restriction also applies to mobile telephones.

18. RACE OFFICIALS

All official directions during the course of the race will be advised by the Race Officer on board the start/finish boat. This boat will be marked with an SYC Burgee. To ensure there is no confusion during races, no other boats are to issue directions unless approved by the Race Officer or the SYC Sailing Officer.

19. PRIZES

RACE PRIZES

- 19.1 The Skipper or a crew member of the boat must be present at Race Presentation after each race in order to receive prizes. Failure to be present will entitle the next placing to receive the prizes
- 19.2 Other prizes may be awarded at the discretion of the Organising Authority.

PERPETUAL PRIZES

- 19.3 The 2019/2020 Sailing Presentation for each Series of Thursday Twilight Racing and Overall Twilight Champion will take place in the Southport Yacht Club Main Beach



THURSDAY TWILIGHT DIVISION– 2019/20 SAILING INSTRUCTIONS



Clubhouse.

- 19.4 Only SERIES ENTRANTS are eligible for Sailing Season prizes at the Sailing Presentation Night.
- 19.5 The SYC Overall Twilight Club Champion will be determined using the results from the Spring, Summer and Winter Twilight Series combined.
- 19.6 To qualify for these trophies the skipper/owner must be a current financial member of SYC and their yacht registered with SYC.

20. DISCLAIMER OF LIABILITY

- 20.1 All those taking part in races conducted by Southport Yacht Club do so at their own risk and responsibility.
- 20.2 The Southport Yacht Club, any sponsor and any party involved in the organisation of any event disclaims any and every responsibility for any loss, damage, injury to persons and/or things, both ashore and at sea, as a consequence of participation in any way in the races covered by these sailing instructions.
- 20.3 Attention is drawn to RRS Rule 4 which states: "The responsibility for a boat's decision to participate in a race or to continue racing is hers alone."

21. INSURANCE

Each participating boat shall be insured with valid third-party liability insurance with a minimum cover of \$10M (AUD).

22. RESULTS

Results will be posted on the Southport Yacht Club website on the dedicated results section of the Southport Yacht Club's website as well as on the Thursday Twilight page.

23. MEDIA RIGHTS

In participating in the Thursday Twilight Division Club Racing for 2019/2020, a competitor grants to the Organising Authority and the sponsors, the right in perpetuity, to make, reproduce, edit, use and show, from time to time and at their discretion, any motion pictures, still pictures and live, taped or film television and other reproductions of him/ her taken during the 2019/2020 Sailing Season and to use his / her likeness, voice, name and any other information in any material related without compensation.

24. FURTHER INFORMATION

Should you require further information, please do not hesitate to contact:

Thursday Twilight Division Representative

Ray McMahon 0424 983 270 rayzor911@ymail.com

Southport Yacht Club Inc. Hollywell Sailing Squadron

1 Marina Crescent, HOLLYWELL QLD 4216.

Phone: (07) 5537 7030 Email: sailing.admin@southportyachtclub.com.au

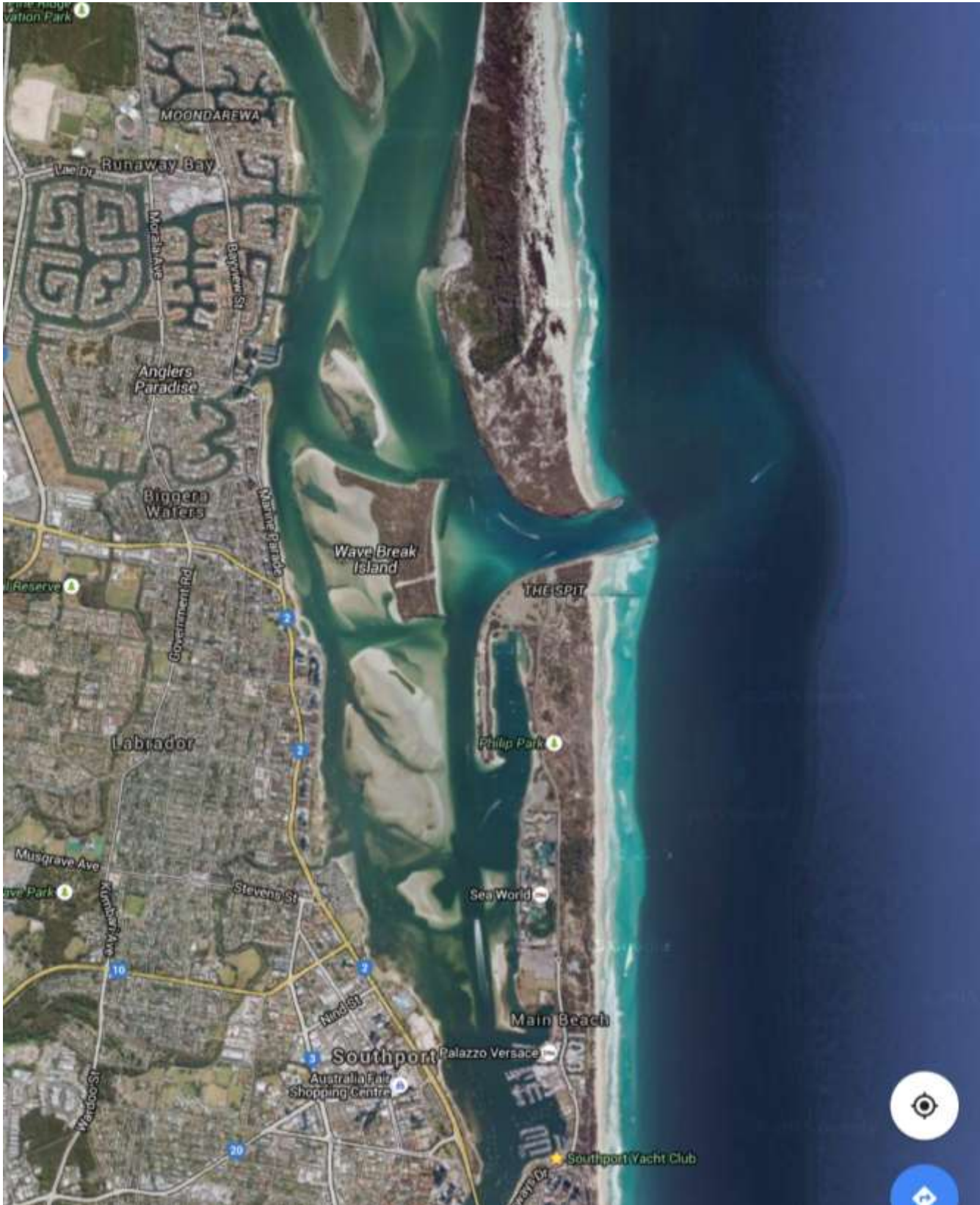


ATTACHMENT A – SYC TWILIGHT RACING AREA





THURSDAY TWILIGHT DIVISION- 2019/20 SAILING INSTRUCTIONS





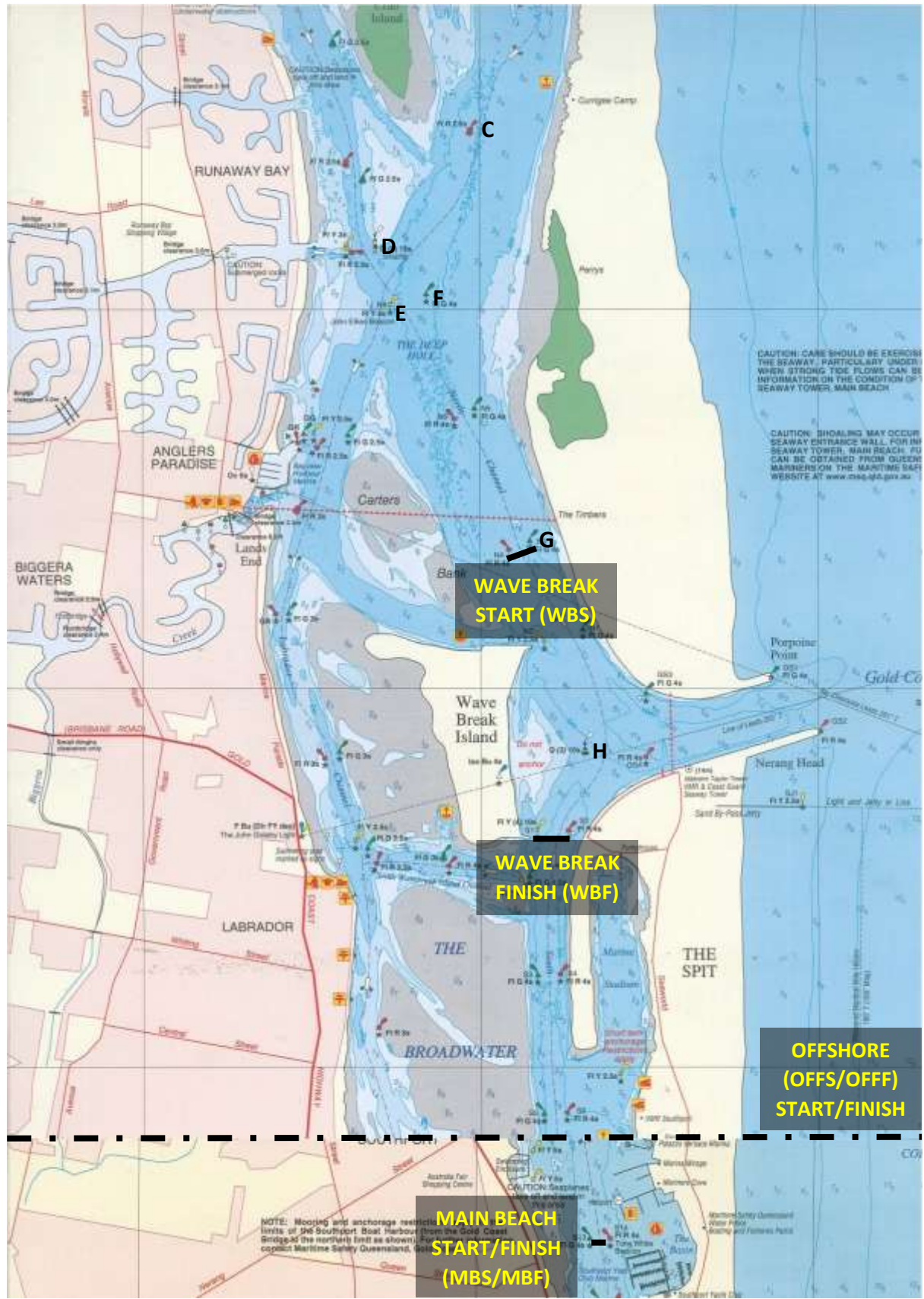
ATTACHMENT B – SYC TWILIGHT MARKS

BUOY	DESCRIPTION
START / FINISH	IALA Beacons – As described below or Black & White Chequered inflatable cylinder
X, Y & Z	Orange inflatable cone
Barging Buoy	Pink teardrop

DESIGNATED MARKS	LOCATION	Approx. GPS COORDINATES
Wavebreak Start 1	Port/Starboard Laterals	27° 55.9'S 153° 25.2'E
2	Second Port/Starboard Laterals	27° 55.3'S 153° 24.9'E
Wavebreak Finish	Port Lateral/Special Mark	27° 56.4'S 153° 25.3'E
A	Ephraim Is Special	27° 53.7'S 153° 24.3'E
B	Sovereign Is Special	27° 52.3'S 153° 24.8'E
C	Crab Is Port Lateral	27° 54.5'S 153° 24.9'E
D	Crab Is West Cardinal	27° 54.8'S 153° 24.6'E
E	John Elkes Special	27° 55.0'S 153° 24.7'E
F	Deep Hole Starboard Lateral	27° 55.0'S 153° 24.8'E
G	South Stradbroke Starboard Lateral	27° 55.8'S 153° 25.3'E
H	Seaway East Cardinal	27° 56.2'S 153° 25.3'E
K	Western Channel	27° 54.2'S 153° 24.3'E
X	Laid Mark	As described by the Race Officer
Y	Laid Mark	As described by the Race Officer
Z	Laid Mark	As described by the Race Officer



ATTACHMENT B – SYC TWILIGHT MARKS





ATTACHMENT B – SYC TWILIGHT MARKS





ATTACHMENT C – SYC TWILIGHT COURSES & MARK ROUNDINGS

COURSE	MARK ROUNDINGS	WIND
1	WBS – C – H (S) - MBF	NORTHERLY
1A	WBS – C – E – G – C – E – H(S)MBF	NORHTERLY
2	WBS – C – G – C – E - H(S) - WBF	SOUTHERLY
3	MBS - H - E(S) - G - F - H(S) - WBF	SOUTHERLY
4	MBS – H – C – E – C – E – H (S) - WBF	SOUTHERLY
5	MBS – H – C – E – G – C – E - H(S) - WBF	SOUTHERLY
6	MBS – H – C – B – K – F – G - H(S) - WBF	SOUTHERLY
7	MBS - H - E(S) - G - C - F - H(S) - WBF	SOUTHERLY
8	MBS - H - F(S) - C - E - G - E - H(S) - WBF	SOUTHERLY
9	WBS – E – G – F(S) – G – F(S) – C – F - WBS	NORTHERLY/SOUTHERLY

NB: ALL MARKS TO BE LEFT/PASSED TO PORT UNLESS INDICATED BY (S) – IN WHICH CASE MARKS ARE TO BE LEFT/PASSED TO STARBOARD.