



CAT WEEKEND 15th-16th FEBRUARY 2020

SAILING INSTRUCTIONS



Organising Authority

1 Marina Crescent, Hollywell Qld 4216

Phone: 07 5537 7030

www.southportyachtclub.com.au



CONTENTS

1. <u>RULES</u>	<u>2</u>
2. <u>RESPONSIBILITY</u>	<u>2</u>
3. <u>REGATTA OFFICE AND OFFICIAL NOTICEBOARD</u>	<u>2</u>
4. <u>SIGNALS MADE ASHORE</u>	<u>2</u>
5. <u>NOTICE TO COMPETITORS</u>	<u>3</u>
6. <u>COMPULSORY SKIPPER'S BRIEFING</u>	<u>3</u>
7. <u>DIVISION FLAGS</u>	<u>3</u>
8. <u>COURSES AND MARKS OF THE COURSE</u>	<u>3</u>
9. <u>RACE COMMITTEE VESSELS</u>	<u>3</u>
10. <u>SCHEDULE OF EVENTS</u>	<u>4</u>
11. <u>THE START</u>	<u>4</u>
12. <u>RECALLS</u>	<u>4</u>
13. <u>CHANGE OF THE POSITION OF THE NEXT MARK</u>	<u>5</u>
14. <u>PENALTIES</u>	<u>5</u>
15. <u>YACHTS NOT FINISHING</u>	<u>5</u>
16. <u>THE FINISH</u>	<u>5</u>
17. <u>TIME LIMITS</u>	<u>5</u>
18. <u>PROTESTS</u>	<u>5</u>
19. <u>MEDIATION</u>	<u>6</u>
20. <u>HANDICAPS AND SCORING</u>	<u>6</u>
21. <u>SAFETY</u>	<u>6</u>
22. <u>REPLACEMENT OF CREW OR EQUIPMENT</u>	<u>7</u>
23. <u>PRIZES</u>	<u>7</u>
24. <u>DISCLAIMER OF LIABILITY</u>	<u>7</u>
25. <u>INSURANCE</u>	<u>7</u>
26. <u>APPENDIX A – COURSES AND MARK DESCRIPTIONS</u>	<u>8-9</u>
27. <u>IMPORTANT REGATTA CONTACTS AND NUMBERS</u>	<u>10</u>
28. <u>MANAGEMENT TEAM AND JURY PANEL</u>	<u>10</u>
29. <u>CODE FLAGS</u>	<u>11</u>

SAILING INSTRUCTIONS

1. Rules

- 1.1 The regatta will be governed by the rules, unless modified by these Sailing Instructions, as defined in:
 - a) The Racing Rules of Sailing (RRS) of World Sailing (WS);
 - b) The Prescriptions and Special Regulations of Australian Sailing (AS) Part 2;
 - c) Relevant Class Rules;
- 1.2 Nothing in the Notice of Race (NOR) or Sailing Instructions (SI) relieves a boat of her responsibility under civil law to comply with the International Regulations for Preventing Collisions at Sea or local regulations.
- 1.3 The owner and skipper of all boats shall ensure that no entities form unauthorised associations between themselves (and their products or services) and the event (otherwise known as ambush marketing") or any "hijack signage" is carried out by or on behalf of themselves or their sponsors with reference to the event and that nothing else is done which might undermine the event, the rights of the event sponsor, or any other sponsor or participant in the event.
- 1.4 When conflict occurs between the Notice of Race (NOR) and the Sailing Instructions (SIs), the rules of the Sailing Instructions shall prevail. This changes RRS 63.7.
- 1.5 Appendix T Arbitration will apply.

2. Responsibility

- 2.1 All those taking part in these races do so at their own risk and responsibility. Neither Southport Yacht Club nor any other club or company connected with the organising of these races is responsible for the seaworthiness of a boat whose entry is accepted, nor the sufficiency or adequacy of its equipment. Owners shall accept full responsibility for the seaworthiness and safe navigation of their boats and competence of their crews.
- 2.2 Attention is drawn to Fundamental Rule 4, which states "The responsibility for a boat's decision to participate in a race or to continue racing is hers alone".

3. Regatta Office and Official Notice Board

The Regatta Office will be located at Southport Yacht Club, Sailing Squadron, 1 Marina Crescent, Hollywell QLD 4216. The official Notice Board is located next to the Sailing Office, where official notices to competitors will be posted.

4. Signals made ashore

- 4.1 Signals made ashore will be displayed from the flagpole located at the Southport Yacht Club, Sailing Squadron Race Control Tower.
- 4.2 When a signal is displayed over a Divisional flag, it shall apply to that Division only.
- 4.3 Code Flag "AP" (Answering Pennant), with two sounds (one sound then lowered) means, "The race is postponed. The Warning Signal will be made not less than 20 minutes after this signal is lowered". (This changes RRS Race Signals "AP").

5. Notice to Competitors

- 5.1 Notices to competitors will be posted on the official Notice Board, located at Southport Yacht Club Sailing Squadron, Hollywell, adjacent to the Southport Yacht Club Sailing Office. Notices may also be posted on the Official on-line notice board on the event website <https://www.southportyachtclub.com.au/sailing-office-notice-board/>.
- 5.2 Any change to Sailing Instructions made ashore will be posted at least two (2) hours before the race affected and the Notice to Competitors will be signaled by the display of Code Flag "L" ashore. Changes to the schedule of races will be notified by 1700 the day before it will take effect.

6. Compulsory Skipper's Briefings

A compulsory Skipper's briefing will be held in accordance with the Schedule of Events, located at Southport Yacht Club Sailing Squadron, Hollywell.

7. Division Flags

There will be two (2) Divisions, however, sub-Divisions may be created, at the discretion of the Race Committee.

Division	Flag
Division One (1)	Numeral Pennant One (1)
Division Two (2)	Numeral Pennant Two (2)
Division Three (3)	Numeral Pennant Three (3)

8. Racing Area

The waters between Wave Break Island and the Northern end of the Measured Mile will consist of the Racing areas for this regatta, as per Appendix "A".

9. Courses and Marks of the Course

- 9.1 See Appendix "B".
- 9.2 The starting area will be advised at the Compulsory Skipper's Briefing and will be between staff displaying an orange flag on the Race Control Boat and the Start Mark.
- 9.3 All International Association of Marine Aids to Navigation and Lighthouse Authorities (IALA) Buoyage System Lateral Navigation Marks located to the north of, and including Crab West Cardinal (CWC) shall be observed and passed or rounded as marks of the course (in accordance with Maritime Safety Regulations and Navigation Convention).
- 9.4 All competitors must maintain a minimum distance of three (3) metres from all navigation marks and round them to Port, including Marks "X", "J" and "S".
- 9.5 Courses to be sailed will be Windward/Leeward type and Passage Race courses.

10. Race Committee Vessels

Race Committee Start and Support Vessels will display the SYC burgee when on station and in the race area.

11. Schedule of Events

DATE – 2020	EVENT – ALL DIVISIONS	TIME
Friday 14 th February	Entries Close	1700hours
Saturday 15 th February	Registration (Southport Yacht Club Sailing Squadron, Hollywell)	0800hours
	Compulsory Skipper's Briefing	0915hours
	Morning Session Warning Signal	Not Before 0955hours
	Afternoon Session Warning Signal	Not Before 1330hours
Sunday 16 th February	Compulsory Skipper's Briefing	0915 hours
	Final Session Warning Signal	Not Before 0955hours
	Competitor BBQ and Presentation	1600hours

The Race Committee may make changes to this schedule at any time. The number of races for each day will be advised at the Compulsory Skippers Briefing each day which will be dependent on weather conditions.

When more than one race will be held on the same day, the Warning Signal for each succeeding race will be made as soon as practicable.

No Warning Signal will be sounded after 1430hours on Sunday 16th February 2020.

12. The Start

- 12.1 Races will be started as per RRS 26, with the Warning Signal given five (5) minutes before the Starting Signal.
- 12.2 The Starting Line will be between the signal mast displaying an orange flag on the starting vessel at the starboard end and a port end start pin
- 12.3 A yacht starting later than ten (10) minutes after her Starting Signal will be scored "Did Not Start". This changes Rule A4 and A5.

13. Recalls

- 13.1 Following a general recall the new Warning Signal will be five (5) minutes after the recalled start.

Four minutes after the recalled start the First Substitute will be lowered, the Divisional flag(s) for the Division to be re-started will be hoisted at the 5 minute

13.2 Following a general recall the start(s) for the following Division(s) will be delayed accordingly.

13.3 In addition to the requirements of RRS 29 "Individual Recall", the Race Committee may verbally hail yachts.

14. Change of the Position of the Next Mark

The Race Committee may change the position of any mark of the course by moving the original (or finish) mark to a new position. This change will be signaled before the leading boat has begun the leg with Code Flag "C" and sound signals, although the mark may not yet be in the new position. Any mark to be rounded after rounding the moved mark may be relocated without further signaling, to maintain course configuration.

15. Penalties

Alternative Penalties - For windward/leeward courses the two-turn penalty (RRS 44.1) is changed to a one-turn penalty.

Discretionary Penalties – Breaches of Sailing Instruction 22 (Safety) shall be a 30% scoring penalty. This will not be grounds for a protest by a boat. This changes RRS 60.1(a). The scoring abbreviation for a discretionary penalty imposed under this instruction will be (Discretionary Penalty Imposed) (DPI).

The penalty shall be applied to the race sailed nearest, in time to that of the breach.

16. Yachts not Finishing

Yachts not finishing a race shall inform the Race Committee or Support Boat, with their intention to return to shore prior to leaving the race area.

17. The Finish

The finish line will be between the signal mast displaying a Blue flag on the finishing vessel at the starboard end and the port end finish pin.

18. Time Limits

Course	Target Time
Windward/Leeward	40 minutes
Passage Race	120 minutes

18.1 Yachts failing to finish within thirty (30) minutes after the first boat, in it's Division or within the time limit, whichever is later, will be scored a "Did Not Finish" (DNF). This changes Rule 35 and A4 and A5.

18.2 One race of the series will be a long passage race.

19. Protests & Requests for Redress

19.1 Protest Forms are available at the Southport Yacht Club, Hollywell, Sailing Office. Protests shall be delivered there within the protest time limit, which is sixty (60) minutes after the last boat has finished in the last race of the day for it's Division.

19.2 Notification of the details of protest hearing will be placed on the official notice board as soon as possible to inform competitors where and when there is a hearing in which they are parties to protest or named as a witness (at least 30 minutes prior to hearing/s). These notices are deemed to fulfil the requirements of

RRS 63.2. Representatives of boats, who are parties to hearings, and their witnesses, are advised to remain on call in the vicinity of the Regatta Office (or such other place as directed by the Race Committee).

- 19.3 Hearings will be held in the Southport Yacht Club Hollywell, Sailing Office, as soon as practicable after racing. Protests will be heard by a Jury Panel, constituted in accordance with RRS Appendix M.
- 19.4 RRS 66 is changed by adding: "On the last day of racing, a party to the hearing may ask for a reopening no later than 20 minutes after being informed of the decision. If the party was informed of the decision on the previous day it shall ask for a reopening no later than the time limit for protests."
- 19.5 RRS 60.3 (a) (1) is changed by deleting the word "serious".
- 19.6 Breaches to Sailing Instruction 22 will not be grounds for protest by a yacht. This changes RRS 60.1 (a). Penalties for breaches of these rules and Sailing Instructions marked with a "Discretionary Penalty Imposed" [DPI] may be less than disqualification. The scoring abbreviation for a Discretionary Penalty imposed under this Instruction will be (DPI).

20. Mediation – Appendix T

- 20.1 For protests involving an alleged breach of a rule of RRS Part 2, a short Mediation Hearing may be held prior to a Protest Hearing. This changes RRS Part 5, Section B.
- 20.2 After a written protest is lodged, one representative from each boat will meet with the Mediator. No witnesses will be permitted at this hearing.
- 20.3 A boat that accepts fault at a Mediation Hearing will be penalised by having her race score increased by 25% of the difference between the boats finish score and the score for DSQ in her Division, rounded to the nearest whole number. All other boats scores will remain the same. Once accepted, this decision is not subject to reopening or appeal. This alters RRS 63, 64.1, 66 and Appendix A.
- 20.4 The acceptance of a Mediator's opinion cannot be grounds for redress or reopening. This changes RRS 60.1, 62 and 66.
- 20.5 The Mediator may be a member of any subsequent Jury or may give evidence to the Jury Panel.

21. Handicaps and Scoring

- 21.1 The scoring system shall be the Low Point System, RRS Appendix A, as modified by A9 will apply.
- 21.2 Two races must be completed to constitute a series.
- 21.3 A boat's series score will be the total of her race scores for Saturday 15th – Sunday 16th February 2020. All results will be calculated on the Class Ratings of Australian Sailing Yardstick (ASY).

22. Safety

- 22.1 All helmspersons shall "Sign On" with Race Committee **prior** to departing shore, at the "Sign On" station under the Official Noticeboard at Southport Yacht Club Sailing Squadron, Hollywell.
- 22.2 All helmspersons shall "Sign Off" with Race Committee **upon** arrival back at shore, no later than sixty (60) minutes after the last boat has finished in their division, at the "Sign Off" station under the Official Noticeboard at Southport Yacht Club Sailing Squadron, Hollywell.
- 22.6 A boat that retires from a race shall notify Race Control (or Official Support Boat), prior to leaving the Race Area.
- 22.7 Failure to comply with **any** of these Safety Regulations shall result in a Discretionary Penalty Imposed (DPI). And shall be scored accordingly by the race committee without a hearing. The penalty shall be

applied to the race sailed nearest, in time to that of the breach. This changes RRS Rule 60, 60.2, A4 and A5.

23. Replacement of Crew or Equipment

- 23.1 A yacht shall not change specifications after the close of entries. Any change to the skipper or crew, hull, spars, sails, foils or equipment may only be made with the express written consent of the Race Committee.
- 23.2 Substitution of damaged or lost equipment will not be allowed unless approved by the Race Committee. Requests for substitution shall be made in writing via the Sailing Office. Application does not constitute approval.

24. Prizes

Prizes will be awarded to each Division for First (1st), Second (2nd) and Third (3rd) places overall on Australian Sailing Yardstick (ASY).

Other prizes may be awarded at the discretion of the Organising Authority.

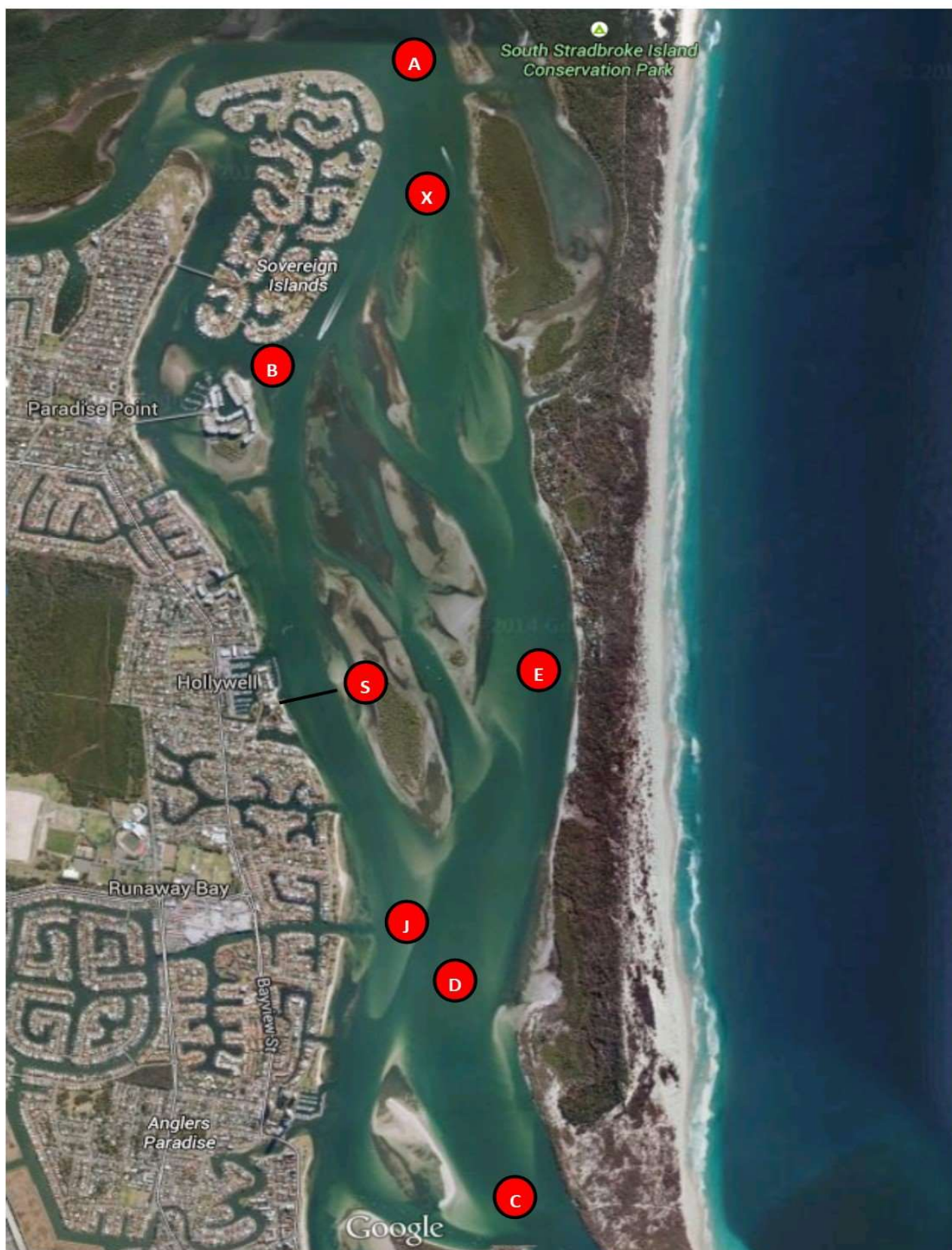
25. Disclaimer of Liability

Competitor's participation in the Regatta entirely at their own risk. See Rule 4, Decision to Race. The Organising Authority will not accept any liability for material damage or personal injury or death sustained in conjunction with, or prior to, during or after the Regatta.

26. Insurance

Each participating yacht shall be insured with valid third-party liability insurance with a minimum cover of \$10, 000, 000.00 per incident or the equivalent. Proof of Insurance may be required, clearly indicating the person, the amount and the period of coverage, at registration. All owners/competitors who Enter the Regatta are deemed to have made a declaration that they hold such cover.

APPENDIX A – Racing Area



APPENDIX B – MARKS & COURSES

MARK DESCRIPTIONS

Course Mark	Mark Description
Start Mark	Black and White Checker cylindrical buoy (approx. 1.5m x .06m)
Finish Mark	Black and White Checker cylindrical buoy (approx. 1.5m x .06m)
Mark A	Orange Cylindrical Buoy (approx. 1.8m x 0.9m)
Mark B	Orange Cylindrical Buoy (approx. 1.8m x 0.9m)
Mark C	Orange Cylindrical Buoy (approx. 1.8m x 0.9m)
Mark D	Orange Cylindrical Buoy (approx. 1.8m x 0.9m)
Mark E	Orange Cylindrical Buoy (approx. 1.8m x 0.9m)
Mark J	John Elks Cross Chanel Mark
Mark X	Sovereign Cross Chanel Mark

B1 All International Association of Marine Aids to Navigation and Lighthouse Authorities (IALA) Buoyage System Lateral Navigation Marks located to the north of, and including Crab West Cardinal (CWC) shall be observed and passed or rounded as marks of the course (in accordance with Maritime Safety Regulations and Navigation Convention).

B2 All competitors must maintain a minimum distance of three (3) metres from all navigation marks, including Marks “X”, “J” and “Crab West Cardinal (CWC)”.

Course	Wind Direction	Course Configuration
1	North East	Start A – B – A – B – A – B – Finish
2	South East	Start – C – D – C – D – C – D – Finish
3	North East	Start – D – E – D – E – D – E – J (S) – Finish
4	Island Passage	Start – X (S) – J (S) – Finish
5	Island Passage	Start – J – C – X – Finish
6	West Channel Only	Start – J – X – Finish
7	Long Passage	Start – A – X (S) – J (S) – Finish

IMPORTANT REGATTA CONTACTS AND DETAILS

Important Contacts

First Aid and Emergency Services	VHF Channel (CH)	Telephone
Seaway Tower VMR403	CH 16, 22, 67, 73, 82	0755 912 948
Coast Guard Southport VMR440	CH 16, 21, 22, 67, 73, 81, 82	0755 311 421
VMR Southport VMR400	CH 16, 67, 73, 22, 81, 82	0755 323 417
Queensland (Gold Coast) Water Police	CH 16, 73	0755 095 700
Race Communications on Water	CH 09	

Organizing Authority

Southport Yacht Club	0900 – 1600 hours daily 1 Marina Crescent, Hollywell www.southportyachtclub.com.au	07 5537 7030
Race Committee Contact	Simon Turpin Sailing.ops@sycgc.com.au	+61 400 558 917
Event Website	https://www.southportyachtclub.com.au/sailing-calendar-all-divisions/	

Management Team

Principal Race Officer	Mark Dingley (NRO)
Commodore	Ray McMahon
Vice Commodore Sail	Drew Jones
Sailing Operations Manager	Simon Turpin
Sailing Divisional Rep. (Catamaran)	Benjamin Downey

Volunteer Coordinator	Phil Short
General Manager	Brett James
Sailing Administrator	Renee Cohen
Sailing Reception	Karen Holdway

INTERNATIONAL CODE FLAGS AND PENNANTS							
WITH MEANINGS							
ALPHABET FLAGS							
ALFA ..		KILO ---		UNIFORM ---		1	
Have diver down, keep clear		Wish to communicate		You are running into danger		-----	
BRAVO ----		LIMA ----		VICTOR ----		2	
Dangerous goods		Stop instantly		Require assistance		-----	
CHARLIE ----		MIKE ---		WHISKEY ---		3	
Yes		My vessel is stopped making no way		Require medical Assistance		-----	
DELTA ---		NOVEMBER -- BER		XRAY ---		4	
Keep clear, maneuvering with difficulty		No		Stop your intentions, Watch for signals		-----	
ECHO .		OSCAR ---		YANKEE ---		5	
Altering course to Starboard		Man overboard		Dragging my anchor		-----	
FOXTROT ----		PAPA ----		ZULU ---		6	
Disabled, communicate with me		In harbour: All persons report on board		Require a Tug Fishing: Shooting nets		-----	
GOLF ---		QUEBEC ----		SUBSTITUTES		7	
Require a pilot Fishing: Hauling nets		Request free pratique		1st		-----	
HOTEL ----		ROMEO ---		2nd		8	
Pilot on board		.		3rd		-----	
INDIA ..		SIERRA ---				9	
Altering course to Port		Engines going astern				-----	
JULIETT ----		TANGO -				0	
On Fire, have dangerous cargo, keep clear		Keep clear, engaged in pair trawling				-----	