



GOLD COAST, AUSTRALIA



2020/21 Sailing Season

INSHORE DIVISION

SAILING INSTRUCTIONS

w. southportyachtclub.com.au
p. +61 7 5591 3500
ABN: 98 569 906 907

DUX
ANCHORAGE

OXENFORD
WATERSPORTS
CENTRE

HOLLYWELL
SAILING
SQUADRON

MAIN BEACH
CLUBHOUSE
& MARINA



INSHORE DIVISION – 2020/21 SAILING INSTRUCTIONS



ID - INSHORE DIVISION SERIES SCHEDULE	
2 HANDED RACE	Saturday 11 th July
ID - Brass Monkey 1/7	Wednesday 15 th July
ID - Winter Passage 1/3	Saturday 18 th July
ID - Brass Monkey 2/7	Wednesday 22 nd July
ID - Winter Passage 2/3	Saturday 25 th July
ID - Brass Monkey 3/7	Wednesday 29 th July
ID – Brass Monkey 4/7	Wednesday 5 th August
LADIES DAY RACE	Sunday 9 th August
ID – Brass Monkey 5/7	Wednesday 12 th August
ID – Winter Passage 3/3	Saturday 15 th August
ID – Brass Monkey 6/7	Wednesday 19 th August
CRAB ISLAND CLASSIC	Saturday 22 nd August
ID – Brass Monkey 7/7	Wednesday 26 th August
ID – JaM 1/14	Wednesday 9 th September
SAIL PAST / BREAKING OF THE FLAG	Saturday 12 th and Sunday 13 th September
ID – RTC 3/15	Wednesday 16 th September
ID – Summer Passage Race 1	Saturday 19 th September
ID – JaM 2/14	Wednesday 23 rd September
ID – Summer RTC 1	Saturday 26 th September
ID – RTC 4/15	Wednesday 30 th September
ID – JaM	Wednesday 7 th October
BRIDGE TO NO BRIDGE	Saturday 10 th and Sunday 11 th October
ID – RTC 5/15	Wednesday 14 th October
ID – Summer Passage Race 2	Saturday 17 th October
ID – JaM 4/14	Wednesday 21 st October
ID – Summer RTC 2	Saturday 24 th October
ID – RTC 6/15	Wednesday 28 th October
ID – JaM 5/15	Wednesday 4 th November
ID – Summer RTC 3	Saturday 7 th November



INSHORE DIVISION – 2020/21 SAILING INSTRUCTIONS



ID – RTC 7/15	Wednesday 11 th November
ID – JaM 6/14	Wednesday 18 th November
JOHN MCNAMARA MEMORIAL RACE	Saturday 21 st November
ID – RTC 8/15	Wednesday 25 th November
ID – JaM 7/14	Wednesday 2 nd December
ID – Summer RTC 4	Saturday 5 th November
ID – RTC 9/15	Wednesday 9 th December
ID – JaM (Xmas Fun)	Wednesday 16 th December
ID – JaM 8/14	Wednesday 13 th January
ID – Summer Passage Race 3	Saturday 16 th January
ID – RTC 10/15	Wednesday 20 th January
ID – JaM 9/14	Wednesday 27 th January
ID – Summer RTC 5	Saturday 30 th January
ID – RTC 13/15	Wednesday 3 rd February
ID – JaM 10/14	Wednesday 10 th February
ID – RTC 14/15	Wednesday 17 th February
ID – Summer Passage Race 4	Saturday 20 th February
ID – JaM 11/14	Wednesday 24 th February
ID – RTC 13/15	Wednesday 3 rd March
2 HANDED RACE	Saturday 6 th March
ID – JaM 12/14	Wednesday 10 th March
ID – Summer RTC 6	Saturday 13 th March
ID – RTC 14/15	Wednesday 17 th March
ID – JaM 13/14	Wednesday 24 th March
ID – RTC 15/15	Wednesday 31 st March
ID – JaM 14/14	Wednesday 7 th April
ID – Summer Passage Race 5	Saturday 17 th April
ID – Summer RTC 6	Saturday 24 th April



INSHORE DIVISION – 2020/21 SAILING INSTRUCTIONS



INSHORE DIVISION SERIES FEES	
WHOLE SEASON BLOCK (Includes Summer, JAM, RTC, Brass Monkey & Winter Series)	\$ 500.00
SUMMER SERIES	\$ 100.00
WEDNESDAY JAM SERIES	\$ 140.00
ROUND THE CANS SERIES (RTC)	\$ 220.00
BRASS MONKEY SERIES	\$ 70.00
WINTER SERIES	\$ 60.00
BLOCK DISCOUNT FOR SYC SPECIAL EVENTS (Includes Dash 4 Ca\$h, Crab Island Classic, John McNamara Memorial Race, Ladies Day Race, Bridge to No Bridge & Two-Handed Race)	\$ 220.00
Casual Race Entry (per race day)	\$30

SYC SPECIAL SAILING EVENTS FOR 2020/2021

Please visit our Southport Yacht Club website (www.southportyachtclub.com.au) for all SYC Special Sailing Events for the coming season for your Division.



INSHORE DIVISION – 2020/21 SAILING INSTRUCTIONS



2020/2021 SAILING SEASON - POLICY

CLUB PARTICIPATION RULES

1. Southport Yacht Club (SYC) is a member of Australian Sailing and races are governed by the Racing Rules of Sailing (RRS) of the International Sailing Federation and the Prescriptions and Special Regulations (SR) of Australian Sailing (AS). These may be found at: www.sailing.org/documents/racingrules/index
2. All participating Boats and Operators must comply with The *Transport Operations (Marine Safety) Act 1994* and its subordinate legislation, the *Marine Safety (Domestic Commercial Vessel) National Law Act 2012* (Cwlth) and its subordinate legislation AND The *International Regulations for the Prevention of Collisions at Sea 1972* (COLREGS).
The *Racing Rules of Sailing* (RRS) only applies between participating SYC Competitors for the duration of the event. Should interaction occur with non-participating ships, then COLREGS shall apply to all ships and shall over-ride all other rules.
3. Following participation in any three (3) SYC club races, any owner, skipper or crew of a participating Boat is required to become a member, in the appropriate category, of SYC.
4. It is the responsibility of the person in charge of the Boat to ensure that all crew competing on the boat holds a current membership of AS or equivalent membership of a yachting authority recognised by ISAF. Please visit the Australian Sailing website at <https://www.sailing.org.au/finder/>.
5. The Top Yacht program is used by SYC for its race management software.
6. All members intending to race shall pre-pay and register with a Season Entry or Casual Entry **prior** to racing. Failure to pay the outlined fee and/or register will result in positions not being shown in results. Any member/s **who continually race without paying or registering will be referred to The Club Manager for disciplinary action.**
7. Only current financial members of the Southport Yacht Club Inc. are eligible for a Season Entry.
8. Average Points may be requested for series entrants while competing at a State, National or International regatta. An application for average points must be completed and returned to the Sailing Office **BEFORE** the missed day's racing. The application form is available on the SYC Website. No application will be considered post missed days racing. These points will be awarded for no more than three races in a series.
9. Current Covid-19 Safe Plan in Place. We are compliant in accordance with the 'Aquatic Sport Sector Industry COVID Safe plan', for Yachting QLD (Sailing) – small off the beach craft & yachts. At all times, the Plan is subject to all regulations, guidelines, and directions of Government and Public Health Authorities. Protocols as set out by the Organising Authority, include online pre-registration for the event. Skipper and Crew details will be required to complete the entry. **No late entries will be accepted.** Cross referencing of all registered Persons on Board (POB's) will be completed between Administration and Race Control with penalties being contained within the Sailing Instructions for non-compliance in affect.
10. All competitors are reminded of RRS 1.1 Helping Those in Danger; A boat or competitor shall give all possible help to any person or vessel in danger.



INSHORE DIVISION – 2020/21 SAILING INSTRUCTIONS



RACE ABANDONMENT

1. Any decision to race, postpone or abandon racing in either light weather or inclement weather, will be made by the Sailing Office in consultation with the Vice Commodore of Sail and the relevant Sailing Committee Divisional Representative.
2. For regular club racing the decision to race, postpone or abandon will not be made before 1000 hours on the day of the race unless circumstances dictate that an earlier decision would be appropriate noting:
 - 2.1 Racing will not be started if there is a current Gale (or higher), Tsunami or other severe weather warning that will impact the race area(s).
 - 2.2 Racing may not be started if there is a current Severe Thunderstorm Warning that will impact the race area(s)
 - 2.3 Racing may not be started if there is a Strong Wind Warning in the race area(s).
 - 2.4 For regular club racing the decision to postpone or abandon a race due to light weather will only be made within 60 minutes of the first starting signal.
 - 2.5 Races will only be abandoned after careful consideration of all weather conditions and their likely impact on the race area(s).
3. A decision to race on any given day does not relieve any competitor of his/her obligation under RRS Fundamental Rule 4.

SAILING COMMITTEE, RACE COMMITTEE & PROTEST COMMITTEE

1. The Vice Commodore of Sail shall recommend the appointment prior to the start of each season, a Sailing Committee which shall include at least one member nominated by each of the divisions sailing in the Club and the Sailing Operations Manager.
2. The Vice Commodore of Sail shall be Chairperson of the Sailing Committee and shall record such decisions and recommendations as passed by a simple majority present at Sailing Committee meetings. Sailing Committee decisions shall be reported to the Board.
3. Quorum for the Sailing Committee shall consist of four members.
4. Quorum for Race & Protest Committee's shall consist of three members.
5. The Sailing Committee shall: determine the sailing programme for the forthcoming season; determine such sailing rules and instructions as are necessary for the conduct of races within the Club; be responsible for conducting point score, championship and special events within the Club and any other sailing event that the Board decides upon from time to time to conduct; and meet at least once a month.
6. Between meetings of the Sailing Committee, the Sailing Officers shall have power to deal with any emergency. Any action taken under this provision shall be reported to the next meeting of the Sailing Committee.
7. **The Race Committee** shall include the Divisional Representative, the Vice Commodore of Sail, a Sailing Officer from the Sailing Office and the RO; or their nominated deputy.
8. **All decisions relating to sailing events shall be deliberated on by the Race Committee.**
9. Protest Committee shall be appointed by the Sailing Office for each hearing session as required.
10. Protest Hearings & Requests for Redress for all club racing (excluding SYC Special Events) will be held on the first Monday of each month at SYC Hollywell from 6pm. Protests will be heard in order of receipt and Parties will be notified of the schedule by email no later than the Friday prior to the Hearing.



INSHORE DIVISION – 2020/21 SAILING INSTRUCTIONS



DUE PROCESS and HANDICAPS

SYC utilises a democratic *due process* in relation to pertinent Sailing matters that effect our Sailing Community. This *due process* incorporates the Divisional Representatives of The Sailing Committee, the Vice Commodore of Sail and the Sailing Office.

The Top Yacht program is used by SYC for its race management software. The following handicap systems are used for the Inshore Division:

- Club Base Handicap System (CBH)
- ORC Club
- Performance Handicap System (PHS)

Please contact the Sailing Office or your Sailing Committee Divisional Representative for further detailed information in relation to handicaps.

Prior to the commencement of all races, Competitor handicaps will be advertised on the SYC website.

Existing Boats

At the start of the new season, all CBH will be reviewed based on the performance during the past similar series. If the fleet is altered with additional or loss of a significant amount of vessel/s then a new baseline may need to be set. This review will occur prior to the start of the new series and the new CBH and reasons for the amendment will be available at the SYC Sailing Office on request.

Conditions for all Boats

CBH may be amended if the boat is modified. In accordance with Sailing Instructions, any modifications need to be provided in writing to the SYC Sailing Office 48 hours prior to racing. If such modifications are deemed to be significant, the boat will be assessed and entered as a new boat. Previous results will not be combined in the Series results.

Notification of change of Helmsperson from that on the nomination form for a Series/Regatta must be made in writing to the SYC Sailing Office. Failure to comply with the above conditions will result in a CBH adjustment. The SYC Divisional Race Committee will review all results during the following week and if on review the CBH falls outside the mathematical constraints of the Top Yacht Program then a manual adjustment will be made. If such an adjustment occurs, the value and the reasons will be available at the SYC Sailing Office on request. The Vice Commodore of Sail, Divisional Sailing Committee Representative and Sailing Office shall confirm all manual adjustments and the Sailing Office will issue a brief reason for the adjustment containing the series and the date of the change.

New Vessels

A starting CBH and division allocation will be made on submission of a new vessel's details, as per Vessel Registration form. This starting CBH will be reviewed to confirm that the first CBH is appropriate to allow the TopYacht Program to make the automatic adjustment within its mathematical constraints. If for some reason the CBH fails to be adjusted appropriately, then a manual adjustment may be made.



INSHORE DIVISION – 2020/21 SAILING INSTRUCTIONS



Handicap Review

Any Competitor may make an application in writing to the Sailing Office to have their Handicap reviewed without prejudice. In their submission, the Competitor must provide detailed reasons and appropriate calculations to validate their request. The Sailing Office will forward their request to the relevant Sailing Committee Divisional Representative and the Divisional Race Committee for their recommendations. Upon receipt of these recommendations, the Vice Commodore of Sail, Sailing Committee Divisional Representative and Sailing Office may then approve or decline the adjustment and the Sailing Office will issue a brief reason by email containing the series and the date of the amendment or declination.

SAILING COMMITTEE DIVISIONAL REPRESENTATIVES:

ID – Inshore Division:

Ross Manning 0408 195 935 fullgoatracing@hotmail.com

OD - Offshore Division:

Danielle Hutcheson 0408 758 980 danielle@austboating.com.au

TT – Thursday Twilight Division:

Ray McMahan 0424 983 270 rayzor911@ymail.com

OTBC – Off The Beach Catamaran Division:

Ben Downey 0419 741 257 bens.garagedoors@bigpond.com

OTBD – Off The Beach Dinghy Division:

Grace Murphy 0414 618 461 gracemurphy21001@gmail.com

HANDICAP COMMITTEE:

Ian Ball, Brendan Mann, Lee Randall & Chris Noyes,



CODE OF CONDUCT SOUTHPORT YACHT CLUB

A person accepts responsibility by becoming a member of Southport Yacht Club and agrees to the consequences of any breach of the code of conduct. These may include: -

- Suspension or termination from the club.
- And/or legal proceedings – civil or criminal for conduct unlawful under State or Federal Law.

KEY PRINCIPLES

Membership of Southport Yacht Club is a privilege that must be safeguarded by the following principles:

Southport Yacht Club seeks to operate in an environment where people show respect for others and their property. Respect is defined as consideration for the well-being of another's body, emotions and possessions, to ensure no damage or deprivation is caused to any of them.

Southport Yacht Club seeks to operate in an environment, which is free from harassment. Harassment is defined as any action directed at an individual or group, which creates a hostile, intimidating or offensive environment.

Southport Yacht Club seeks to operate in a non-discriminatory environment. By this it is meant that where everyone has an equal opportunity and receives a fair go in accordance with the law as well as the Club Rules, By-Laws, procedures and guidelines.

UNSUITABLE BEHAVIOUR

- Not knowingly discriminate against, abuse, harass, ridicule or embarrass anyone covered by this Code of Conduct.
- Be fair, considerate and honest in all dealings with others.
- Treat all persons with respect, dignity and properly regard their rights and obligations.
- Respect the privacy of other persons.
- Refrain from any form of victimisation towards others.
- Must not use offensive language to any member, visitor attending Southport Yacht Club or any of their events. Must not 'sledge' (as in denigrate and/or intimidate) other persons.
- Excessive use of alcohol, acting in a way that becomes a public nuisance or creates a public disturbance is prohibited.
- Liquor Licensing Laws will be followed at all times.
- Persons under the age of eighteen shall not be permitted to purchase or be supplied tobacco from the cigarette vending machine and shall not be permitted to be served or receive alcohol.
- A member will obey lawful directions from a club employee.
- A member will take responsibility for their guests at all times.
- A member will abide by the dress code of the club.
- A member shall not represent the club in any dealings, unless authorised by the club.
- A member shall not tarnish the reputation of the club, officers, Directors, committees, employees, management or bring it into disrepute.
- The use or encouragement of illegal drugs within the premises of Southport Yacht Club is prohibited.
- Assault, or acting with aggression toward any other person is prohibited.



INSHORE DIVISION – 2020/21 SAILING INSTRUCTIONS



The Club intends to set the highest standards of excellence by displaying values of:

- Equality – demonstrate awareness of individual rights, opinions and beliefs.
- Demonstrate reliability and be a dependable Club member in all aspects of the club's environment.
- Respect and courtesy must be shown at all times to all Club officials, members and patrons.
- No prejudicial behaviour is to occur.
- Display maturity and demonstrate acceptable social behaviour while at the club or attending any of the club's events.
- Abide by the rules of the Constitution and the By-Laws.
- Be mindful of your actions in relation to individual safety and safety of all others involved in the club.
- Conduct themselves in a proper manner to the complete satisfaction of Southport Yacht Club and its members, so as not to bring themselves into public disrepute or censure.
- Not disclose to any unauthorised person or organisation information that is of a confidential or privileged nature concerning Southport Yacht Club. Not promote, or pass on, exchange or publish information whereby that information may be of a confidential, offensive, scandalous, unsubstantiated or derisive type;
- Understand the possible consequences of breaching Southport Yacht Club's rules and regulations.

CHILDREN

Parent and guardians at all times shall be responsible for the behaviour of their children on club premises, including the beach, marina and carparks. Parents and guardians of children whose behaviour is socially unacceptable shall be requested to remove them from club's premises.

COMPLIANCE

Any alleged breach of the above principles are to be reported to the General Manager for action. The General Manager will determine if there has been a breach and may warn or initiate disciplinary action against the relevant member. Any disciplinary action under the Charter will be in accordance with the Constitution and laws applying to the club.

This code is to be read in conjunction with the Articles, Rules, Constitution and By-laws of the club.

**YOU ARE REMINDED THAT THE PURPOSE OF THIS CODE IS TO PROVIDE YOU
WITH A SAFE AND ENJOYABLE ENVIRONMENT**





INSHORE DIVISION – 2020/21 SAILING INSTRUCTIONS



RACING

A minimum of five (5) participants are required to constitute a race. If there are less than the required amount the race may be abandoned.

1. RULES

- 1.1. The races will be governed by the current rules as defined in the Racing Rules of Sailing (RRS)
- 1.2. The 2017-2020 Special Regulations of Australian Sailing (AS): Part 1 for Racing Boats Category 7 will apply to the Summer Passage and Winter Series.
- 1.3. The 2017-2020 Special Regulations of Australian Sailing (AS): Part 1 for Racing Boats Category 7PLUS, additional safety requirements for night racing will apply to the Wednesday JaM, Round the Cans, and Brass Monkeys Series.
- 1.4. International Etchells Boats must comply with the “International Etchells Class Rules”.
- 1.5. SKUD18 Boats must comply with the “SKUD 18 Class Rules”.
- 1.6. Any other Class of Boat that does not comply with Part 1 for Racing Boats Category 7 may apply to SYC for dispensation approval from Australian Sailing.
- 1.7. The International Regulations for the Prevention of Collisions at Sea 1972 (COLREGS) shall apply at all times. The Racing Rules of Sailing (RRS) will apply only between those ships that are participating in the event, for the duration of the event. Should interaction occur with non-participating ships, then COLREGS shall apply to all ships and shall override all other rules. This is a condition imposed by Gold Coast Waterways Authority within our Aquatic Event Authority.
- 1.8. Current Covid-19 Safe Plan in Place. We are compliant in accordance with the ‘Aquatic Sport Sector Industry COVID Safe plan’, for Yachting QLD (Sailing) – small off the beach craft & yachts. At all times, the Plan is subject to all regulations, guidelines, and directions of Government and Public Health Authorities. Protocols as set out by the Organising Authority, include online pre-registration for the event. Skipper and Crew details will be required to complete **each** race. No late registrations will be accepted. Cross referencing of all registered Persons on Board (POB’s) will be completed between Administration and Race Control with penalties being contained within the Sailing Instructions 15.2 for non-compliance in affect.
- 1.9. RRS Appendix T – Arbitration applies.
- 1.10. All competitors are reminded of RRS 1.1 Helping Those in Danger; A boat or competitor shall give all possible help to any person or vessel in danger.

2. ELIGIBILITY

- 2.1. Inshore races are open to all Monohull and Multihull Yachts (both trailable and fixed keel) on the register of a yacht or sailing club affiliated with Australian Sailing.
- 2.2. Off the Beach classes are not permitted to sail in Inshore Races.

3. CHANGES TO SAILING INSTRUCTIONS

- 3.1. Changes to Sailing Instructions will be posted on the official Notice Board and will be emailed to competitors not less than ninety (90) minutes before the scheduled start time of the first race of the day, except that any change to the schedule of races will be posted by 1800 hours on the day before it will take effect.



INSHORE DIVISION – 2020/21 SAILING INSTRUCTIONS



4. SIGNALS MADE ASHORE

- 4.1. Signals made ashore will be displayed on the official flag located on the SYC Hollywell Race Control Tower.
- 4.2. When flag AP is displayed ashore, '1 minute' is replaced with 'not less than 30 minutes' in the race signal AP.
- 4.3. When a visual signal is displayed over a course flag or class flag, it applies to that course area/class only.

5. SCHEDULE OF RACES

- 5.1. The schedule of races is as per the list at the beginning of these Sailing Instructions.
- 5.2. To alert boats that a race or sequence of races will begin soon, the orange on station flag will be displayed with one sound at least five minutes before a warning signal is made.
- 5.3. The warning signal will be given five (5) minutes prior to the starting signal.
- 5.4. The first starting signal for racing covered by these Sailing Instructions shall be considered to be 'not before':
- 5.5. Whenever possible, there will be a presentation of results as soon as practical after each day racing in the SYC Hollywell Clubhouse.

EVENT	TIME
Wednesday JaM Series (Pursuit)	From 1630hrs
Round the Cans Series (RTC)	1700 hours
Brass Monkey Series	1630 hours
Winter Passage Series	1100 hours
Summer Series Passage/RTC	1330 hours

6. DIVISION FLAGS

FLEET	FLAG
Inshore Division	Code Flag Q

7. RACING AREA

Attachment A and B shows the approximate location of the SYC Inshore Division racing area.

8. THE COURSES

- 8.1. The diagrams and tables in ATTACHMENT C and E show the courses to be sailed for the Round the Cans Series (RTC), including the order in which marks are to be passed, and the side on which each mark is to be left.
- 8.2. The course # to be sailed will be indicated by the relevant numeral pennant being displayed on the start vessel.
- 8.3. Attachment C & D shows the courses to be sailed for the Summer Passage, JaM Series, Round the Cans Series (RTC), Brass Monkey Series including the order in which marks are to be passed, and the side on which each mark is to be left.
- 8.4. The course # to be sailed will be indicated by the relevant numeral pennant being displayed on the Hollywell Tower.



INSHORE DIVISION – 2020/21 SAILING INSTRUCTIONS



9. MARKS

- 9.1 If any navigational marker is a mark of a course, all boats competing are to maintain a minimum distance of 3 meters from any navigation marker. Any boat involved in a marine incident, which includes a collision with an aid to navigation must report the incident in the official format.
- 9.2 Marks, including start and finish marks, are described in Attachment C – SYC DESIGNATED MARKS.

10. AREAS THAT ARE OBSTRUCTIONS

The following areas are designated as obstructions:

- 10.1 Areas outside of the intended channel(s) defined by the IALA system beacons north of and including Q(9)15s (Crab Island West Cardinal) are considered an obstruction. For the purposes of this definition, it shall be considered that a competitor has remained clear of the obstruction provided they have left all IALA beacons to their required side.
*Competitors may refer to the MSQ Boating Maps located at <http://www.msq.qld.gov.au/Boating-maps/Gold-Coast-guides> should they require any clarification.
- 10.2 The finish line is an obstruction, unless finishing. Boats crossing the finish line incorrectly will be scored Did Not Finish (DNF) without a hearing.

11. STARTING SIGNALS

ROUND THE CANS SERIES (RTC)

- 11.1. Races will be started using RRS Rule 26.
- 11.2. The starting line will be between a staff displaying an orange flag on the start vessel at the starboard end and the course side of the port-end starting mark.
- 11.3. Boats whose warning signal has not been made shall avoid the starting area during the starting sequence for other classes.
- 11.4. A boat starting later than four (4) minutes after her starting signal will be scored Did Not Start (DNS) without a hearing. This changes rule A4.

JaM STARTS

- 11.5. An orange On Station flag will be raised with one sound signal, ten (10) minutes prior to the first yachts start time.
- 11.6. A time synchronisation sound signal may be broadcasted at 1630hrs.
- 11.7. Races will be started using allocated handicapped start times:
- 11.8. Boats shall start no earlier than their allocated start time. All times are listed as Australian Eastern Standard Time (AEST). Syncing of your clock is recommended at: <http://www.timeanddate.com/worldclock/fullscreen.html?n=47>
- 11.9. A sound signal will be given to any yacht starting early. They will be required to restart, or be scored OCS.
- 11.10. A yacht which is OCS may be advised via VHF09.
- 11.11. All yachts shall keep clear of the start line and not cross in either direction within five (5) minutes prior to their designated start time. Boats in breach of this will be scored Did Not Start (DNS) without a hearing.
- 11.12. A 10 second count down and sound signal may be given for the first boat due to start.
- 11.13. A boat starting later than ten (10) minutes after her scheduled start time will be scored DNS without a hearing. This changes RRS Rule A4.



INSHORE DIVISION – 2020/21 SAILING INSTRUCTIONS



SUMMER PASSAGE, BRASS MONKEY, & WINTER SERIES STARTS

- 11.14. Races will be started using RRS Rule 26.
- 11.15. The starting line will be between a staff displaying an orange flag on the Hollywell Tower on the western end of the line and the course side of the start buoy.
- 11.16. Where an Official Boat is used, the start line will be between a staff displaying an orange flag on the vessel and the course side of the start mark.
- 11.17. A boat starting later than ten (10) minutes after her starting signal will be scored DNS without a hearing. This changes RRS Rule A4.

12. CHANGE OF THE NEXT LEG OF THE COURSE

- 12.1. To change the next leg of the course, the race committee will move the original mark (or the finishing line) to a new position.

13. SHORTENED COURSE

- 13.1. The race committee may shorten the course at any laid mark, lateral mark or prominent feature of their choice by displaying Code Flag S.

14. ROUND THE CANS SERIES (RTC) FINISH

- 14.1. The finishing line will be between a staff displaying a blue flag on the finishing boat at the port-end and the course side of the starboard-end finishing mark.
- 14.2. Where the Hollywell Tower is used, the finishing line will be between a staff displaying a blue flag on the Hollywell Tower and the course side of a finishing mark.
- 14.3. Where the Hollywell Jetty is used, the finishing line will be between a staff displaying a blue flag on the Hollywell Jetty and the course side of a finishing mark.

15. SUMMER PASSAGE, JaM, BRASS MONKEY, & WINTER SERIES FINISH

- 15.1. When the Hollywell Tower is used, the finishing line will be between a staff displaying an orange flag on the Hollywell Tower and the course side of a finishing mark.
- 15.2. When an Official Boat is used, the finishing line will be between a staff displaying a blue flag on the vessel and the course side of the finishing mark. The finishing mark may be any laid mark, lateral mark or prominent feature of their choice.
- 15.3. For the Brass Monkey Series, the finishing line will be between an orange cylindrical buoy with a white strobe and the end of the Hollywell Tower.

16. PENALTY SYSTEM

- 16.1. Rule 44.1 is changed so that the Two-Turns Penalty is replaced by a One-Turn Penalty, including one tack and one gybe in the same direction.
- 16.2. The Race Committee may, in its absolute discretion, impose the following scoring penalties for each incident:
 - 16.2.1. An infringement of any rule of RRS Part 2 – not less than 2 nor more than 10 places
 - 16.2.2. An infringement of any other rule or Sailing Instruction DPI (Discretionary Penalty Imposed) – not less than 2 nor more than 5 places.

17. TIME LIMITS

- 17.1. For Round the Cans Series (RTC) the time limit for the first boat in each class will be ninety (90) minutes.
- 17.2. For Summer & Winter Series, the time limit for the first boat in each class will be one hundred and eighty (180) minutes.
- 17.3. For Round the Cans Series (RTC), boats failing to finish within fifty (50) minutes after the first boat sails the course and finishes will be scored Did Not Finish (DNF) without a hearing. This changes rules 35, A4 and A5.



INSHORE DIVISION – 2020/21 SAILING INSTRUCTIONS



- 17.4. For Summer Series, boats failing to finish within ninety (90) minutes after the first boat sails the course and finishes will be scored Did Not Finish (DNF) without a hearing. This changes rules 35, A4 and A5.
- 17.5. For JaM Series the time limit will be 1830hrs.
- 17.6. The Brass Monkey Series time limit will be 1830hrs. Boats failing to finish within the Time Limit will be scored Did Not Finish. This changes Rule 35 and A4.1.
- 17.7. If the first boat does not reach the first mark within sixty (60) minutes, the race may be abandoned.

18. PROTESTS AND REQUESTS FOR REDRESS

- 18.1. Immediately after finishing a boat intending to protest shall, in addition to the requirements of RRS 61.1(a), inform the race committee boat at the finish line of her intention to protest and the identity of the boat(s) protested against. The protesting boat must receive an acknowledgement from the Race committee. This changes RRS 61.
- 18.2. RRS Appendix T- ARBITRATION applies to all Divisions for SYC Club Racing and all SYC Special Events:
 - 18.2.1. A short mediation hearing will be conducted for all protests lodged in accordance with RRS 61 which allege an infringement of a rule of Part 2 or 4. Such hearing will be held as soon as possible after racing.
 - 18.2.2. The time and place of the mediation hearing will be decided by the mediator and such advice may be given verbally.
 - 18.2.3. One representative of each boat shall attend the mediation hearing and no witnesses shall be allowed. The mediator shall decide the manner in which testimony is given.
 - 18.2.4. After taking testimony at a mediation hearing the mediator shall make one of the following conclusions:
 - (a) The protest does not comply with RRS 61 and the protestor may withdraw the protest. This changes RRS 63.1.
 - (b) The matter should proceed to a protest hearing. (This may be because rules other than Part 2 or 4 are or may be involved, or because evidence is too complex or divergent to reach a reasonable and timely conclusion, or due to the apparent severity of the alleged infringement, or for any other reason decided by the mediator.)
 - (c) No rule was broken and the protestor may withdraw the protest. This changes RRS 63.1
 - (d) A rule was broken by one or more of the boats involved and all parties to the mediation agree, the infringing boat(s) may accept a 30% scoring penalty, and if so accepted the protestor shall withdraw the protest.
- 18.1.5 If the parties do not agree, the protest shall proceed to a hearing. This changes RRS 63.1
- 18.1.6 A mediation hearing shall not be re-opened. No conclusion of a mediator shall be subject to appeal or be grounds for redress. Should the protest proceed to a protest hearing then the mediator may be a member of the protest committee. Any evidence given by a mediator during a protest hearing shall be given only in the presence of the parties to the hearing.
- 18.3. Protest forms are available at the Sailing Office. Protests shall be delivered there within the Protest Time Limit.
- 18.4. The Protest Time Limit is thirty (30) minutes after the last boat has finished in your division. The same protest time limit applies to all protests by the Race Committee and Protest Committee and to request for redress. This changes Rules 61.3 and 62.2.



INSHORE DIVISION – 2020/21 SAILING INSTRUCTIONS



- 18.5. Notices will be posted according to the 2020/2021 Sailing Season Policy.
- 18.6. Decisions by the Race Committee or Protest Committee will be emailed to parties to the hearing under Rule 65.1.

19. SCORING

- 19.1. The low points scoring system of RRS Appendix A9 will apply.
- 19.2. For Boats that Did Not Finish (DNF) shall be scored points for the finishing place plus one (1) more than the number of boats that came to the starting area.
- 19.3. For Boats that Did Not Compete (DNC) shall be scored points for the finishing place plus three (3) points more than the number of boats that came to the starting area.
- 19.4. Four (4) races are required to constitute a series. When fewer than five (5) races have been completed, all scores shall count.
- 19.5. When five (5) to nine (9) races have been completed a boat's series score will be the total of her race scores excluding her worst score.
- 19.6. When ten (10) to twelve (12) races have been completed a boat's series score will be the total of her race scores excluding her two (2) worst scores.
- 19.7. When thirteen (13) or more races have been completed a boat's series score will be the total of her race scores excluding her three (3) worst scores.
- 19.8. When seventeen (17) or more races have been completed a boat's series score will be the total of her race scores excluding her four (4) worst scores.
- 19.9. The Race committee at its discretion may award nil points to all competitors in any race in any series by notification prior to the start on the official noticeboard. Should the race committee enforce this rule, it cannot be protested and redress cannot be applied for. This changes RRS 90.3(a) and RRS Appendix A

20. SAFETY REGULATIONS

- 20.1. All helmspersons shall "Sign On" via VHF09 radio advising their Boat Name, Sail # and P.O.B. (Persons on Board) prior to their start time. Race Control will confirm recorded details for confirmation of "Sign On".
- 20.2. A boat that retires from a race shall notify the Race Committee as soon as possible via VHF radio including P.O.B.
- 20.3. Competitors must provide a clearly identifiable sail number on their mainsail as noted at time of Entry. A failure to carry clearly distinguishable sail numbers will result in a yacht being scored as DNF without a hearing. This shall not provide grounds for redress.
- 20.4. Where lifelines complying with AS SR Part 1 Section 3 Rule 3.12 have not been fitted, all crew shall wear a visible life jacket, as per AS SR Part 1 Section 5.
- 20.5. In accordance with Australian Sailing 2017-2021 Special Regulations, all boats must be fitted with Navigation Lights complying with IRPCAS. During the periods between the published (www.bom.gov.au) Sunset and Sunrise times, and during times of restricted visibility, all boats must illuminate their Navigation Lights whilst on the water.
- 20.6. Failure to comply with these Safety Regulations, a boat will be scored DPI (Discretionary penalty imposed). This changes RRS Rule A4.
- 20.7. Failure to comply with SI 1.8 Covid19 requirements, a boat will be scored DNS without a hearing. This changes RRS Rule A4. This shall not provide grounds for redress.

21. REPLACEMENT, SUBSTITUTION OR MODIFICATION OF EQUIPMENT

- 21.1. Substitution of damaged or lost equipment will not be allowed unless authorized by the Race Committee. Requests for substitution shall be made to the committee at the first reasonable opportunity.
- 21.2. Failing to notify the SYC Sailing Office of changes to boats configuration or rating, may result in protest by the Race Committee. Penalties for these breaches may be less than disqualification if the Protest Committee so decides.



INSHORE DIVISION – 2020/21 SAILING INSTRUCTIONS



22. EQUIPMENT AND MEASUREMENT CHECKS

22.1. A boat or equipment may be inspected at any time for compliance with Special Regulations Safety Categories and Sailing Instructions. On the water, a boat can be instructed by a race committee equipment inspector or measurer to proceed immediately to a designated area for inspection.

23. OFFICIAL BOATS

23.1. Official boats will be marked with the SYC Burgee.

24. RUBBISH DISPOSAL

24.1. Boats shall not put rubbish in the water. Rubbish may be placed aboard support and Race Committee boats.

25. RADIO COMMUNICATION

25.1. Except in an emergency, a boat shall neither make radio transmissions while racing nor receive radio communications not available to all boats. This restriction also applies to mobile telephones.

25.2. The Race Committee shall communicate with boats on VHF Channel 09.

26. RACE PRIZES

26.1. The Skipper or a crew member of the boat must be present at daily Prize Presentations in order to receive prizes. Prizes not collected during the presentation will be redrawn to the next placings accordingly.

26.2. JAM Series – Three prizes will be awarded First, Second and Third Place.

26.3. Summer Series, Round The Cans (RTC), Brass Monk1ey Series, Winter Series– Prizes will be awarded to 1st, 2nd and 3rd on corrected time. On or before 1900hrs.

27. PERPETUAL TROPHIES

27.1 The 2020/21 Sailing Presentation will take place at the Southport Yacht Club Main Beach

27.2 Only current financial members of the Southport Yacht Club Inc. are eligible for a season entry.

27.3 Only SERIES ENTRANTS are eligible for Sailing Season prizes at the Sailing Presentation Night.

27.4 Other prizes may be awarded at the discretion of the Organising Authority.

28. DISCLAIMER OF LIABILITY

28.1 All those taking part in races conducted by Southport Yacht Club do so at their own risk and responsibility.

28.2 The Southport Yacht Club, any sponsor and any party involved in the organisation of any event disclaims any and every responsibility for any loss, damage, injury to persons and/or things, both ashore and at sea, as a consequence of participation in any way in the races covered by these Sailing Instructions.

28.3 Attention is drawn to RRS Rule 4 which states: "The responsibility for a boat's decision to participate in a race or to continue racing is hers alone."

29. INSURANCE

29.1 Each participating boat shall be insured with valid third-party liability insurance, with a minimum cover of \$10M (AUD) for any one incident. By taking part in a race all boat owners are deemed to have made a declaration that they have such cover.



INSHORE DIVISION – 2020/21 SAILING INSTRUCTIONS



30. RESULTS

- 30.1 Results will be posted on the Southport Yacht Club's website on the Inshore Division page
- 30.2 Results will be posted on the official notice board outside the Sailing Office
- 30.3 Results may be posted on the Inshore Division Facebook Group Page

31. MEDIA RIGHTS

- 31.1 In participating in the Inshore Division Club Racing for 2020/2021, a competitor grants to the Organising Authority and the sponsors, the right in perpetuity, to make, reproduce, edit, use and show, from time to time and at their discretion, any motion pictures, still pictures and live, taped or film television and other reproductions of him/her taken during the 2020/2021 Sailing Season and to use his / her likeness, voice, name and any other information in any material related without compensation.

32. FURTHER INFORMATION

Should you require any further information, please do not hesitate to contact:

SYC SAILING COMMITTEE DIVISIONAL REPRESENTATIVE

ID – Inshore Division:

Ross Manning Mobile: 0408 195 935 Email: fullgoatracing@hotmail.com

SOUTHPORT YACHT CLUB - HOLLYWELL

1 Marina Crescent, HOLLYWELL QLD 4216.

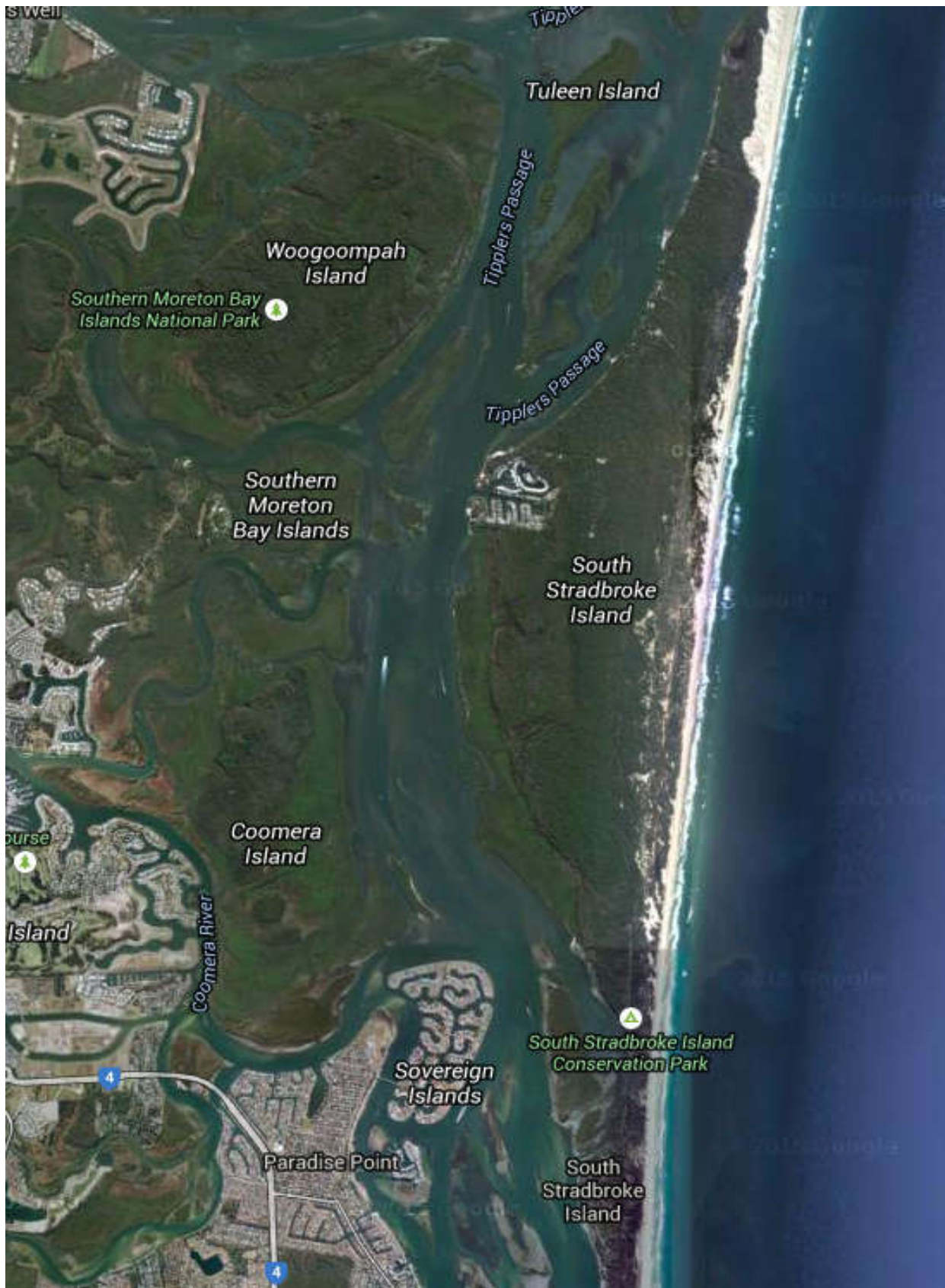
Phone: (07) 5537 7030. Email: Sailing.Admin@sycgc.com.au



INSHORE DIVISION – 2020/21 SAILING INSTRUCTIONS



ATTACHMENT A – Approximate Racing Area

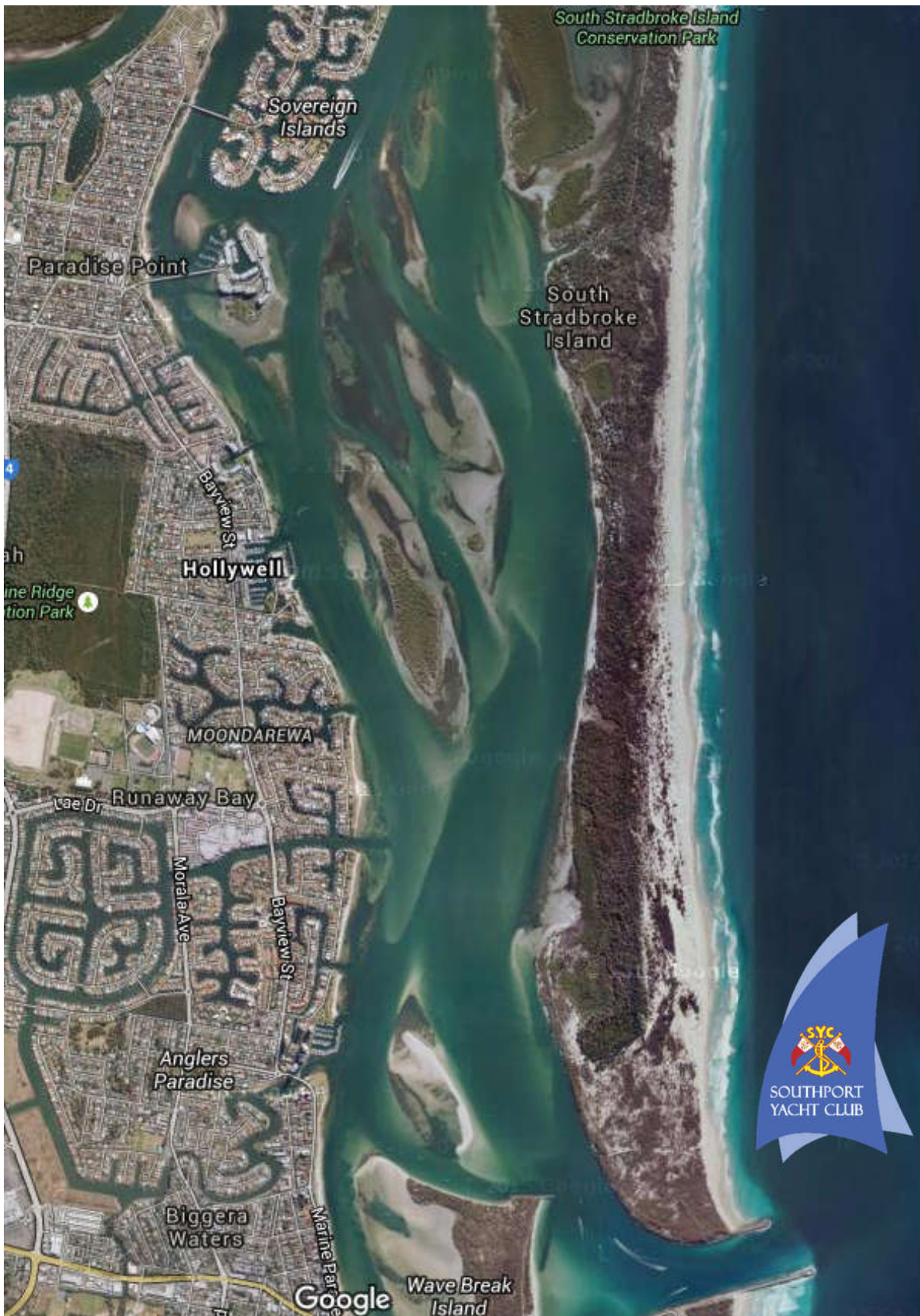




INSHORE DIVISION – 2020/21 SAILING INSTRUCTIONS



ATTACHMENT B – Approximate location for RTC Courses





INSHORE DIVISION – 2020/21 SAILING INSTRUCTIONS



ATTACHMENT C – Buoys / Marks & Courses

BUOYS	DESCRIPTION
START / FINISH	Black and white inflatable cylinders
1a	Orange/Pink teardrop buoy
1 / 2 / 3 / X	Orange inflatable cone
Barging Buoy	Orange teardrop

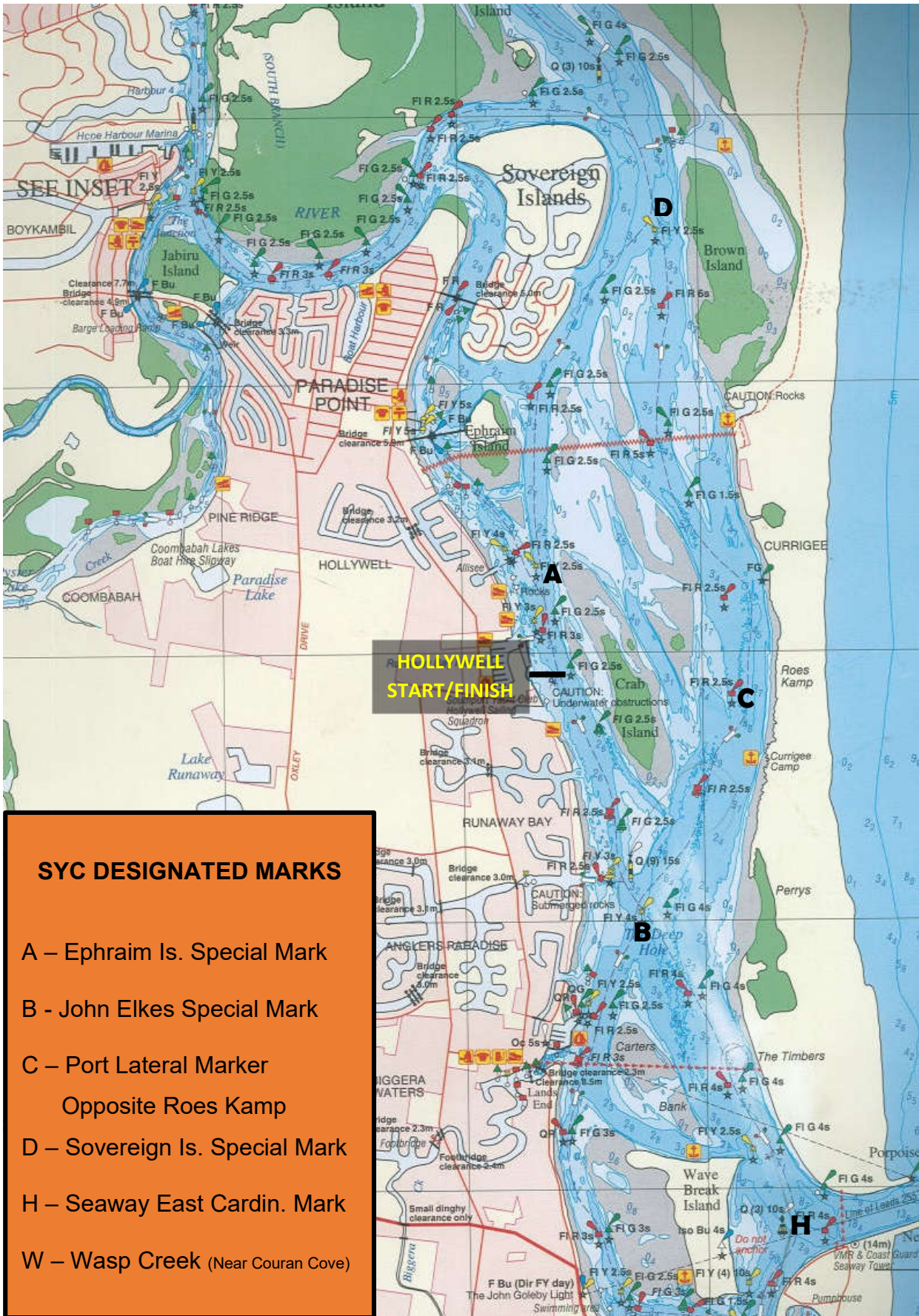
DESIGNATED MARKS	LOCATION	Approx. GPS COORDINATES
Hollywell Start / Finish	Tower/Starboard Lateral	27° 54.2'S 153° 24.3'E
Main Beach Start / Finish	Starboard Lateral/D Arm	27° 58.4'S 153° 25.4'E
Wavebreak Start	Port/Starboard Laterals	27° 55.9'S 153° 25.2'E
Wavebreak Finish	Port Lateral/Special Mark	27° 56.4'S 153° 25.3'E
Dux Start	Starboard Lateral/Special M	27° 49.1'S 153° 24.7'E
Dux Finish	Port/Starboard Laterals	27° 48.8'S 153° 25.2'E
Offshore Start / Finish	1NM South of Sand Pumping Jetty	27° 57.3'S 153° 26.2'E
A	Ephraim Is Special	27° 53.7'S 153° 24.3'E
B	John Elkes Special	27° 55.0'S 153° 24.7'E
C	Crab Is Port Lateral	27° 54.5'S 153° 24.9'E
D	Soveriegn Island Special Mark	27° 52.3'S 153° 24.8'E
H	Seaway East Cardinal	27° 56.2'S 153° 25.3'E
W	Wasp Creek Port Lateral	27° 50.43'S 153° 23.7'E

COURSE	MARK ROUNDINGS	TYPE
1	START – 1 – 3 – 1 – 3 – 1 - FINISH	RTC
2	START – 1 – 3 – 1 – 3 – 1 – 3 – 1 – 3 – 1 - FINISH	RTC
3	START – 1 – 2 – 3 – 1 – 3 – 1 – 2 - FINISH	RTC
4	START – 1 – 2 – 3 – 1 – 3 – 1 – 2 – 3 – 1 – 3 – 1 – 2 – FINISH	RTC
1	START – B – C – D – FINISH	PSG/WS/BM
2	START – D(s) – C(s) – B(s) - FINISH	PSG/WS/BM
3	START – A – H – FINISH	PSG/WS/BM
4	START – D – FINISH	PSG/WS/BM
5	START – H – A – FINISH	PSG/WS/BM
6	START – H – A(s) - W - FINISH	PSG/WS/BM
7	START – W – A(s) – H – FINISH	PSG/WS/BM
8	NOTIFIED AT BRIEFING	PSG/WS/BM
1	START – B – C – D - FINISH	JAM
2	START – A – D(s) – C(s) – B(s) - FINISH	JAM
3	START – D – FINISH	JAM

NB: ALL MARKS TO BE PASSED TO PORT UNLESS INDICATED BY (s) WHICH MUST BE PASSED TO STARBOARD.



ATTACHMENT D – ID PASSAGE DIAGRAM



SYC DESIGNATED MARKS

- A – Ephraim Is. Special Mark
- B - John Elkes Special Mark
- C – Port Lateral Marker
Opposite Roes Kamp
- D – Sovereign Is. Special Mark
- H – Seaway East Cardin. Mark
- W – Wasp Creek (Near Couran Cove)



INSHORE DIVISION – 2020/21 SAILING INSTRUCTIONS



ATTACHMENT E ID ROUND THE CANS SERIES (RTC) DIAGRAM

WINDWARD/LEEWARD & TRIANGULAR COURSE

