

# 2022 BRIDGE TO NO BRIDGE



Saturday 15<sup>th</sup> to Sunday 16<sup>th</sup> October 2022

## SAILING INSTRUCTIONS

Organising Authority

Southport Yacht Club Inc.

1 Macarthur Pde, Main Beach QLD 4217



**Wymark Sirius**  
INSURANCE BROKERS



## TABLE OF CONTENTS

1. RULES.....	3
2. NOTICES TO COMPETITORS.....	3
3. CHANGES TO SAILING INSTRUCTIONS .....	3
4. SIGNALS MADE ASHORE .....	3
5. SCHEDULE OF RACES.....	4
6. CLASS FLAGS.....	4
7. RACING AREAS .....	4
8. THE COURSES.....	4
9. MARKS OF THE COURSE .....	4
10. THE START .....	5
11. THE FINISH .....	5
12. SHORTENED COURSE .....	5
13. PENALTY SYSTEM.....	5
14. TIME LIMITS.....	5
15. PROTESTS AND REQUESTS FOR REDRESS.....	5
16. SCORING.....	6
17. SAFETY REGULATIONS.....	6
18. REPLACEMENT OF CREW OR EQUIPMENT .....	6
19. SUPPORT BOATS .....	7
20. RADIO COMMUNICATION .....	7
21. PRIZES.....	7
22. RIGHTS TO USE NAME AND LIKENESS.....	7
23. INSURANCE .....	7
24. DISCLAIMER OF LIABILITY .....	7
25. INSURANCE .....	7
26. FURTHER INFORMATION .....	8
27. ATTACHMENT A .....	9

## 1. RULES

- 1.1 The races will be governed by the current rules as defined in the Racing Rules of Sailing (RRS).
- 1.2 The Special Regulations of Australian Sailing: Part 1 (AS) shall apply for trailable and fixed keel yachts.
- 1.3 The relevant Class Rules (as applicable) shall apply.
- 1.4 The *International Regulations for the Prevention of Collisions at Sea 1972* (COLREGS) shall apply at all times. The *Racing Rules of Sailing* (RRS) will apply only between those ships that are participating in the event, for the duration of the event. Should interaction occur with non-participating ships, then COLREGS shall apply to all ships and shall override all other rules. This is a condition imposed by Gold Coast Waterways Authority within our Aquatic Event Authority.
- 1.5 RRS Appendix T – Arbitration applies.
- 1.6 All competitors are reminded of RRS 1.1 Helping Those in Danger; A boat or competitor shall give all possible help to any person or vessel in danger.
- 1.7 When conflict occurs between the Notice of Race and the Sailing Instructions, the rules of the Sailing Instructions shall prevail. This changes RRS 63.7.

## 2. NOTICES TO COMPETITORS

Notices to competitors will be posted on the official notice board located at Southport Yacht Club, Hollywell, on the notice board and on the Southport Yacht Club website <https://www.southportyachtclub.com.au/sailing-office-notice-board/>.

## 3. CHANGES TO SAILING INSTRUCTIONS

Any change to the Sailing Instructions will be posted before 0900 hours on the day it will take effect, except that any change to the schedule of races will be posted by 1800 hours on the day before it will take effect.

## 4. SIGNALS MADE ASHORE

- 4.1 Signals made ashore will be displayed at the Main Beach Flag Race Tower.
- 4.2 Signals made ashore will also be displayed onshore at SYC Dux Anchorage.
- 4.3 When flag AP is displayed ashore, '1minute' is replaced with 'not less than 15 minutes' in the race signal AP.

## 5. SCHEDULE OF RACES

DATE	EVENT	TIME
Wednesday 12 <sup>th</sup> October	Entries Close	Midnight
Saturday 15 <sup>th</sup> October	Compulsory Skipper's Briefing at SYC Hollywell (Division 1 & 2)	0930 hours
	Warning Signal Race 1 - Division 1	Not before 1055 hrs
	Race 1 Presentation at Dux	ASAP after racing
Sunday 16 <sup>th</sup> October	Compulsory Skipper's Briefing @ Dux (Division 1 & 2)	0930 hours
	Warning Signal – Race 2 - Division 1	Not before 1055hrs
	Presentation at SYC Main Beach	ASAP after racing

## 6. CLASS FLAGS

DIVISION	CLASS	FLAG
<b>Division 1</b>	Inshore Keelboats/Trailable's	Numeral Pennant One (1)

## 7. RACING AREAS

The racing area shall be the Gold Coast Broadwater, between Wavebreak Island and the Northern End of "The Measured Mile".

## 8. THE COURSES

- 8.1 The course to be sailed on Saturday the 15<sup>th</sup> will be as follows:  
START – D – C – B – FINISH in the vicinity of the measured mile (All marks to PORT)
- 8.2 The course to be sailed on Sunday the 16<sup>th</sup> will be as follows:  
START – C – D – FINISH (All marks to STARBOARD)
- 8.3 Please refer to Attachment A for further information and course maps.
- 8.4 An Alternate course may be described at the Compulsory Skipper's Briefing, should conditions not be suitable to courses described above.

## 9. MARKS OF THE COURSE

- 9.1 The FINISH Mark for Race 1 will be a blue inflatable cylinder with SYC logo.
- 9.2 The START Mark for Race 2 will be a blue inflatable cylinder with SYC logo.
- 9.3 When a navigation lateral mark is nominated as a mark of the course it shall be rounded with a minimum clearance distance of 3 metres so as to comply with the Aquatic Permit Special Conditions imposed by local Regulatory Authorities.



## 10. THE START

- 10.1 Races will be started using RRS Rule 26 with the Warning Signal given five (5) minutes before the Starting Signal.
- 10.2 The Start Line for Race 1 will be between will be between a staff displaying an Orange flag on the Committee Boat and the John Elkes lateral mark to the east.
- 10.3 The Start Line for Race 2 will be positioned towards the Northern end of the Measured Mile and will be between a staff displaying an orange flag on the committee boat and the port end starting mark.
- 10.4 A boat starting later than ten (10) minutes after her starting signal will be scored Did Not Start (DNS) without a hearing. This changes Rule A4.1.
- 10.5 Boats whose warning signal has not been made shall avoid the starting area during the starting sequence for other races.

## 11. THE FINISH

- 11.1 For Race 1, the Finish will be positioned within the Measured Mile. The Finish Line will be between a staff displaying a blue flag on the committee boat to the starboard-end and the course side of the port-end finishing mark.
- 11.2 For Race 2 the Finish will be between the port //starboard laterals (opposite SYC D Arm jetty at SYC Main Beach).

## 12. SHORTENED COURSE

The Finish Line may be between the Committee Boat displaying the Shortened Course Flag (Code Flag "S") and a Lateral Beacon or prominent feature of Race Committee's choice.

## 13. PENALTY SYSTEM

For all divisions RRS 44.1 is changed so that the Two-Turns Penalty is replaced by the One-Turn Penalty, including one tack and one gybe in the same direction.

## 14. TIME LIMITS

- 14.1 Boats failing to finish within ninety (90) minutes after the first boat in its division sails the course and finishes will be scored Did Not Finish (DNF) without a hearing. This changes rules 35, A4 and A5.
- 14.2 Boats scored Did Not Finish (DNF) may be allocated a finishing position at the discretion of the Race Committee.

## 15. PROTESTS AND REQUESTS FOR REDRESS

- 15.1 Boats intending to protest in Race 1 shall inform the Race Committee immediately after finishing by approaching the starboard side of the Start Boat after finishing and hailing the protested boat's sail number. This changes RRS 61.1
- 15.2 Boats intending to protest in Race 2 shall inform the Race Committee immediately after finishing by approaching the SYC Hollywell Race Control Tower after finishing and hailing the protested boat's sail number. This changes RRS 61.1

- 15.3 Protest forms are available at the Sailing Office at the Hollywell Sailing Squadron. Protest forms will also be available on the committee boat once the last boat has finished. Protests shall be delivered there within the Protest Time Limit.
- 15.4 The Protest Time Limit is thirty (30) minutes after the last boat has finished in your division. The same protest time limit applies to all protests by the Race Committee and Protest Committee and to request for redress. This changes Rules 61.3 and 62.2.
- 15.5 Notices will be posted within thirty (30) minutes of the Protest Time Limit to inform competitors of hearings in which they are parties or named as witnesses. Hearings will be held in the Sailing Office (located at the southwest corner of the clubhouse) at a date to be notified as soon as possible.
- 15.6 Notices of protests by the Race Committee or Protest Committee will be posted to inform boats under Rule 61.1(b).
- 15.7 RRS Appendix T – Arbitration applies.

## 16. SCORING

The Low Point Scoring System of Appendix A shall apply.

## 17. SAFETY REGULATIONS

- 17.1 Off the Beach Catamarans shall sign on for Race 1 and Race 2 using the supplied Sign ON sheets provided prior to getting on the water.
- 17.2 Keelboats shall sign on before 1150hrs for each race via VHF09, confirming Boat Name, Sail Number and the number of persons on board (POB).
- 17.3 All Competitors are deemed to have signed off upon finishing each race.
- 17.4 Any Competitor retiring from any Race, must inform the Race Committee as soon as possible.
- 17.5 No anchor shall protrude forward of the bow whilst racing.
- 17.6 Any competitor failing to abide with the above Safety Regulations will be given a 10-minute elapsed time Score Penalty per failure without hearing. This changes rule 44.3

## 18. REPLACEMENT OF CREW OR EQUIPMENT

- 18.1 Substitution of damaged or lost equipment will not be allowed unless authorized by the race committee. Requests for substitution shall be made to the committee at the first reasonable opportunity.
- 18.2 Failing to notify the SYC Sailing Office of changes to boats configuration or rating, may result in protest by the Race Committee. Penalties for these breaches may be less than disqualification if the Protest Committee so decides.
- 18.3 Competitors must provide a clearly identifiable sail number on their mainsail as noted on the Yachts Race Entry Form. A failure to carry clearly distinguishable sail numbers may result in a yacht being scored as 'Did Not Start' (DNS) without a hearing. This shall not provide grounds for redress.

## 19. SUPPORT BOATS

Support boats will be marked with SYC logo.

## 20. RADIO COMMUNICATION

20.1 A boat shall neither make radio transmission while racing nor receive radio communications not available to all boats with a VHF radio.

20.2 All Keelboats shall carry a VHF radio. All communications by Race Management shall be made to competitors via VHF 09.

## 21. PRIZES

21.1 Prizes will be awarded to Line Honours, First, Second and Third Place per Division for each race and the overall results for the combined Cord'Times of Race 1 & Race 2.

21.2 The Bridge to No Bridge Perpetual Trophy will be awarded to the 1st place winner of Division 1 of the overall results for the combined Cord'Times of Race 1 & Race 2 and will be presented at SYC Main Beach as soon as possible after racing on the 16<sup>th</sup> October 2022.

21.3 Other Prizes may be given at the discretion of the Organising Authority.

## 22. RIGHTS TO USE NAME AND LIKENESS

By participation in the 2022 Bridge to No Bridge, a competitor automatically grants to the Organising Authority and the sponsors of the event, the right in perpetuity, to make, use and show, from time to time and at their discretion, any motion pictures, still pictures and live, taped or film television and other reproductions of him/her during the period of the competition for said event in which the competitor participated and in all material related to the said event without compensation.

## 23. INSURANCE

All boats shall have a current Marine Legal Public Liability Insurance Policy for the duration of the Race, with a sum insured of no less than AUD\$10M (or its equivalent in any currency). By taking part in the race, all boat owners are deemed to have made a declaration that they have such cover.

## 24. DISCLAIMER OF LIABILITY

Competitors participate in the 2022 Bridge to No Bridge entirely at their own risk. See Rule 3 (Decision to Race), which advises "The responsibility for a boat's decision to participate in a race or to continue racing is hers alone".

The Organizing Authority, sponsors and/or any party involved in the organisation of this event disclaim any and every responsibility for any loss, damage, injury to persons and/or things both ashore and at sea, as a consequence of participation in any way in the races covered by these Sailing Instructions.

## 25. INSURANCE

Each participating boat shall be insured with valid third-party liability insurance with a minimum cover of \$10M (AUD) per event or the equivalent.

## 26. FURTHER INFORMATION

For further information please contact the SYC Sailing Office.

Southport Yacht Club

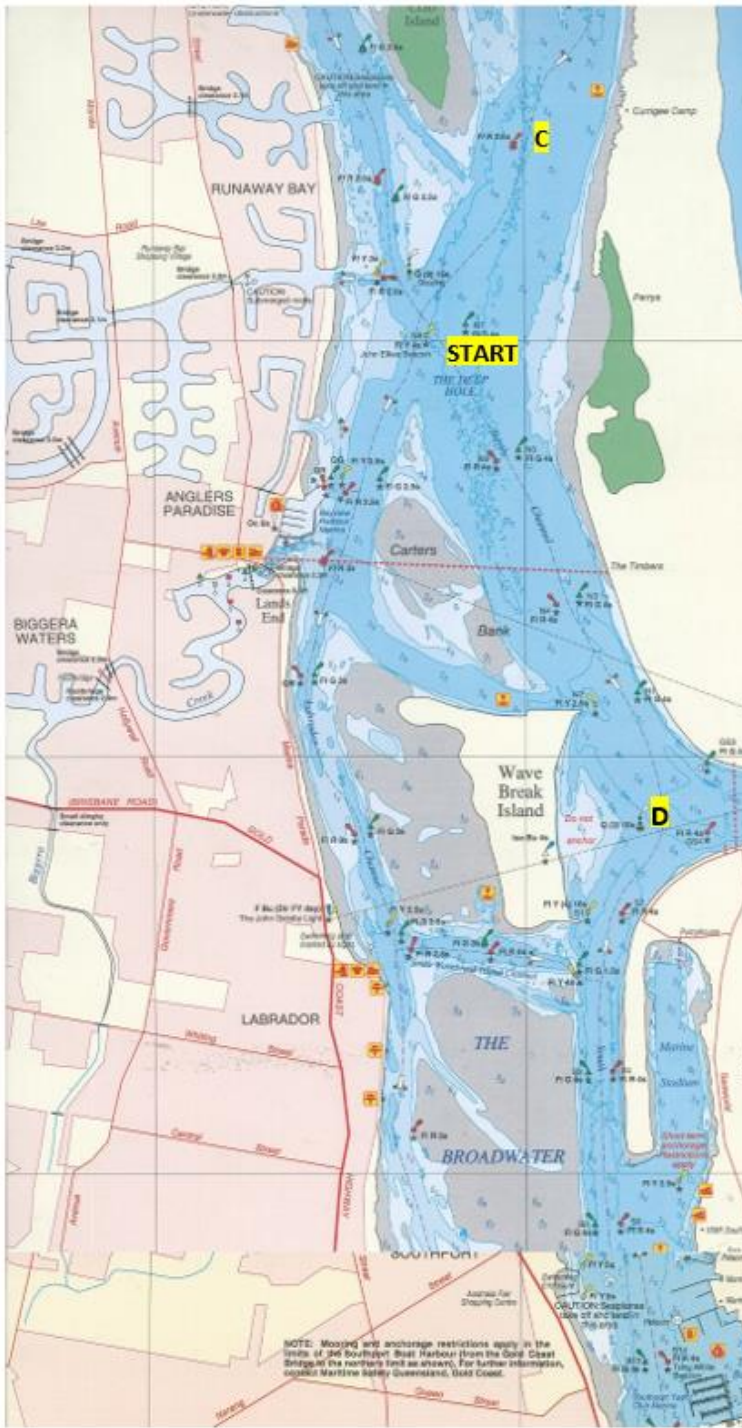
Phone: (07) 5537 7030 Fax: (07) 5537 7131

Email: [sailing.admin@sycgc.com.au](mailto:sailing.admin@sycgc.com.au)



27. ATTACHMENT A

B2NB COURSE MAP



**COURSE TO BE SAILED**

**SAT 15th – RACE 1**

**START – D – C** The FINISH line will be in the vicinity of the Measured Mile.

\*All marks to **PORT**

**SUN 16th – RACE 2**

**START – C – D – FINISH**

\*All marks to **STARBOARD**

**NB: THE DUX START/FINISH LINE MAY BE POSITIONED TO THE NORTHERN END OF THE MEASURED MILE.**

**Bridge to No Bridge - MARKS**

**C** – Crab Island Port Lateral: ~27° 53.9' S – 153° 25.2' E

**D** – John Elkes Special Mark: ~27° 55' S – 153° 24.7' E

