



Australia 2022
Para Sailing
International
Championships



for Athletes with Intellectual Impairment



Saturday 5th to Saturday 12th November 2022

SAILING INSTRUCTIONS

Organising Authority
Southport Yacht Club Inc.
Hollywell Sailing Squadron
1 Marina Crescent - Hollywell QLD 4216

07 5537 7030 | www.southportyachtclub.com.au

TABLE OF CONTENTS

1. RULES	3
2. CHANGES TO SAILING INSTRUCTIONS	3
3. COMMUNICATIONS	4
4. CODE OF CONDUCT	4
5. SIGNALS MADE ASHORE.....	4
6. SCHEDULE	5
7. CLASS FLAGS	5
8. RACING AREA	6
9. COURSES	6
10. THE START	6
11. THE FINISH.....	6
12. PENALTIES AT THE TIME OF AN INCIDENT	6
13. TIME LIMITS AND TARGET TIMES [NP]	7
14. PROTESTS, ARBITRATION AND REQUESTS FOR REDRESS [NP] [DP].....	7
15. SCORING.....	7
16. SAFETY REGULATIONS [DP] [NP]	8
17. REPLACEMENT OF CREW OR EQUIPMENT [DP]	8
18. EQUIPMENT AND MEASUREMENT CHECKS [DP]	8
19. EVENT ADVERTISING [DP] [NP].....	8
20. OFFICIAL BOATS.....	8
21. COACH AND SUPPORT BOATS [DP] [NP]	9
22. PRIZES.....	9
23. RISK STATEMENT	9
24. INSURANCE	9
25. MEDIA RIGHTS	9
26. ADDENDUM A – RACE AREA	10
27. ADDENDUM B - MARKS AND COURSE DIAGRAM.....	11
28. ADDENDUM C – SUPPORT PERSON REGULATIONS (SPRs).....	12

1. RULES

- 1.1 The event is governed by the rules as defined in The Racing Rules of Sailing.
- 1.2 National prescriptions do not apply.
- 1.3 The current version of the Para World Sailing Race Management Manual (RMM) will apply as amended by these Sailing Instructions.
- 1.4 World Anti-Doping Code Regulations will apply. Competitors are reminded of the World Sailing Rules and Regulations concerning the use of banned methods and substances, which are contained in the World Sailing Anti-Doping Code. Drug testing may take place during this event. Additional information is available at <https://www.wada-ama.org>
- 1.5 Hansa 303 Class Rules, except that C.6 Membership shall not apply. Membership of the Class Association is not required.
- 1.6 Support Person Regulations.
- 1.7 In all rules governing this event, both 'athlete' and 'competitor' mean a person competing or intending to compete in the event.
- 1.8 The International Regulations for the Prevention of Collisions at Sea 1972 (COLREGS) shall apply at all times. The Racing Rules of Sailing (RRS) will apply only between those boats that are participating in the event, for the duration of the event. Should interaction occur with other vessels, then COLREGS shall apply to all boats and shall over-ride all other rules. This is a condition governed by local Statutory Authorities for the OA's approved Aquatic Event Permits.
- 1.9 RRS Appendix T, Arbitration, will apply as amended by SI 14.4 below.
- 1.10 RRS Appendix P, Special Procedures for Rule 42, will apply if required.
- 1.11 The notation [NP] in a rule means that a boat may not protest another boat for breaking that rule. This changes RRS 60.1(a).
- 1.12 The notation [SP] denotes a rule for which a standard penalty may be applied by the race committee or the technical committee without a hearing or a discretionary penalty applied by the International Jury with a hearing. This changes RRS 63.1 and A5.
- 1.13 The notation [DP] denotes a rule for which the penalty is at the discretion of the International Jury and may be less than disqualification. This changes RRS 64.1.
- 1.14 When conflict occurs between the Notice Of Race and the Sailing Instructions, the rules of the Sailing Instructions shall prevail. This changes RRS 63.7

2. CHANGES TO SAILING INSTRUCTIONS

- 2.1 Any change to the sailing instructions will be posted before 0900 on the day it will take effect, except that any change to the schedule of races will be posted by 2000 on the day before it will take effect.

3. COMMUNICATIONS

- 3.1 The online official notice board is located at <https://southportyachtclub.com.au/events/2022-para-sailing-world-championships/>
- 3.2 [DP] While racing, except in an emergency, a boat shall not make voice or data transmissions and shall not receive voice or data communication that is not available to all boats.

4. CODE OF CONDUCT

- 4.1 [DP] Competitors and support persons shall comply with reasonable requests from race officials.
- 4.2 [DP] Competitors and support persons shall handle any equipment or place advertising provided by the organizing authority with care, seamanship, in accordance with any instructions for its use and without interfering with its functionality.

5. SIGNALS MADE ASHORE

- 5.1 Signals made ashore will be displayed at the SYC Hollywell Race Control Tower
- 5.2 When flag AP is displayed ashore, '1 minute' is replaced with 'not less than 30 minutes' in Race Signals AP.
- 5.3 [DP] Flag D with one sound means 'Boats shall not leave the harbour until this signal is made. The warning signal will not be made before the scheduled time or less than 30 minutes after flag D is displayed.'

6. SCHEDULE

6.1 Schedule

Date	Activity	From	To
05 November (Saturday)	Arrival of Athletes and Team Officials at Competition venue		
	OA GAMES 2022 OPENING CEREMONY		
06 November (Sunday)	OAGames Competition starts		
	Registration	9am	12noon
	Equipment Inspection	9am	12noon
	Competitor Briefing	12noon	12.30pm
	Training	12.30pm	2pm
	Practice Race/s	2pm	4pm Approx.
07 November (Monday)	Racing	11am	4pm Approx.
08 November (Tuesday)	Racing	11am	4pm Approx.
	Sailors Forum	4pm	5pm
09 November (Wednesday)	Racing	11am	4pm Approx.
	BBQ for competitors and supporters	4pm	5pm
10 November (Thursday)	Competitor Briefing	9am	9.30am
	Racing	11am	4pm Approx.
	Prizegiving Ceremony	4pm	5pm Approx.
11 November (Friday)	OAGames Competition ends		
	OA GAMES 2022 CLOSING CEREMONY		
12 November (Saturday)	Departure of Athletes and Team Official from competition venue		

6.2 Number of Races

Class	Number	Races per day Scheduled	Races per day Maximum
Hansa 303 One Person	12	3	4
Hansa 303 Two Person Supported	12	3	4

6.3 The scheduled time of the warning signal for the first race each day is 10:55am.

6.4 On the last scheduled day of racing, no warning signal will be made after 3pm.

7. CLASS FLAGS

Class	Flag
Hansa 303 One-Person	Red Hansa insignia on white flag
Hansa 303 Two-Person Supported	White Hansa insignia on red flag

8. RACING AREA

- 8.1 The racing area will be on the waters of the “Broadwater” between “Wavebreak Island” and “Sovereign Island”. Addendum A shows the location of the course race area where racing will be conducted. Competitors shall provide their own sailing apparel and lifejacket.

9. COURSES

- 9.1 The diagrams in Addendum B show the courses, the marks, the course designations, the order in which marks are to be passed, and the side on which each mark is to be left.
- 9.2 Legs of the course will not be changed after the preparatory signal. This changes RRS 33.
- 9.3 No later than the warning signal, the race committee signal vessel will display designated Course on a black Course Board.

10. THE START

- 10.1 The starting line will be between a staff displaying an orange flag on the race committee signal vessel and the course side of the starting mark.
- 10.2 A barging buoy may be attached to the race committee signal vessel. Boats shall not pass between this buoy and the race committee signal vessel at any time.
- 10.3 [DP] Boats whose warning signal has not been made shall avoid the starting area during the starting sequence for other classes. The starting area is defined as a rectangle 50 meters from the starting line and marks in all directions.
- 10.4 A boat that does not start within 4 minutes after her starting signal will be scored Did Not Start without a hearing. This changes RRS 35, A4 and A5

11. THE FINISH

- 11.1 The finishing line will be between a staff displaying a Blue flag on the race committee signal vessel and the course side of the finish mark.

12. PENALTIES AT THE TIME OF AN INCIDENT

- 12.1 RRS 44.1 and RRS P2.1 are changed so that a Two-Turns Penalty is replaced by a One-Turn Penalty.

13. TIME LIMITS AND TARGET TIMES [NP]

13.1 Time limits and target times are as follows:

Class	Time Limit	Finish Window	Target Time
Hansa 303 (All Classes)	50	15	30

13.2 Failure to meet the target times will not be grounds for redress. This changes RRS 35, 62.1(a), A4 and A5.

13.3 Boats which are still deemed to be racing by the Race Committee, but are outside the finish window, may be scored an allocated place based on their current position. Such boats may be directed to return to the starting area or other location without crossing the finish line. Neither the allocation of a finish place nor the failure to allocate a finish place will be grounds for redress. This changes RRS 28, 35, 62.1(a), A4 and A5.

14. PROTESTS, ARBITRATION AND REQUESTS FOR REDRESS [NP] [DP]

14.1 Protest forms are available at the Sailing Office. Protests and requests for redress or reopening shall be delivered there within the protest time limit.

14.2 For each class, the protest time limit is 90 minutes after the last boat has finished the last race of the day or the race committee signals no more racing today, whichever is later.

14.3 Notices will be posted no later than 30 minutes after the protest time limit to inform competitors of hearings in which they are parties or named as witnesses. Hearings will be held in the protest room, beginning at the time posted.

14.4 Amendments:

- (a) Appendix T1(b) is deleted and replaced with - A Post-Race Penalty is either a Standard Penalty [SP] as specified in the Sailing Instructions, or a 30% Scoring Penalty calculated as stated in rule 44.3(c). However, rule 44.1(a) applies.
- (b) Appendix T1(c) is amended by adding the following sentence - Post-Race Penalty requests shall be in writing and on the Post-Race Penalty Declaration Form available from the Regatta Office.

15. SCORING

15.1 Four (4) races are required to be completed to constitute a series.

15.2 When fewer than five (5) races have been completed, a boat's series score will be the total of her race scores.

15.3 When from five (5) to nine (9) races have been completed, a boat's series score will be the total of her race scores excluding her worst score.

15.4 When ten (10) or more races have been completed, a boat's series score will be the total of her race scores excluding her two worst scores.

15.5 To request correction of an alleged error in posted race or series results, a boat shall complete a scoring enquiry form available at and to be submitted to the Sailing Office.

16. SAFETY REGULATIONS [DP] [NP]

- 16.1 Boats not leaving the beach for a scheduled race shall promptly notify the Sailing Office.
- 16.2 [SP] Before leaving to race on each scheduled racing day, a crew member from each boat shall sign on. Sign on sheets will be available at the registration desk. Failure to sign-on will result in that boat having a 10% scoring penalty applied (but not worse than DNF) for the first race in the session. This changes RRS 63.1 and A5.
- 16.3 [SP] Within protest time limits after returning ashore, a crew member from each boat shall sign-off. Failure to sign-off will result in that boat having a 10% scoring penalty applied (but not worse than DNF) for the last race in the session. This changes RRS 63.1 and A5.
- 16.4 A boat that retires from racing shall notify the race committee before leaving the racing area, or, if that is not possible, shall notify the race office as soon as possible after returning ashore and shall complete a retirement declaration form at the race office before the expiry of the protest time limit.
- 16.5 When a race committee displays code flag "V" with one sound signal, all official and support boats on the relevant course area shall monitor the relevant Race Committee radio channel for search and rescue instructions.
- 16.6 Race course will use VHF Channel 09.

17. REPLACEMENT OF CREW OR EQUIPMENT [DP]

- 17.1 Substitution of helms will not be allowed. Substitution of crew will only be allowed with prior written approval of the Race Committee and shall comply with any restrictions in the Notice of Race.
- 17.2 Substitution of damaged or lost equipment will not be allowed unless approved by the Race Committee. Requests for substitution shall be (1) made in writing on the appropriate form collected from the Race Office, and (2) submitted to the Race Committee at the first reasonable opportunity.

18. EQUIPMENT AND MEASUREMENT CHECKS [DP]

- 18.1 Equipment may be inspected at any time for compliance with the class rules and sailing instructions. When instructed by an event equipment inspector, a boat shall proceed immediately to a designated area for inspection.

19. EVENT ADVERTISING [DP] [NP]

- 19.1 Boats may be required to display required event sponsor advertising. The Organising Authority will supply the advertising and instructions for their use.

20. OFFICIAL BOATS

- 20.1 Official boats will display a SYC burgee.

21. COACH AND SUPPORT BOATS [DP] [NP]

- 21.1 Coach and support boats are required to register via the online registration, display identification supplied by the Organising Authority, carry and monitor a working VHF radio capable of receiving the relevant race channels, be insured and comply with local regulations to be permitted to use berthing facilities at the venue. Further details are provided in Addendum C – Support Person Regulations (SPRs).

22. PRIZES

- 22.1 Prizes will be awarded in accordance with the NOR, and, in addition, at the discretion of the Organising Authority.

23. RISK STATEMENT

- 23.1 Competitors participate in the Championships entirely at their own risk - RRS 3 states: 'The responsibility for a boat's decision to participate in a race or to continue to race is hers alone.'
- 23.2 By participating in this event each competitor agrees and acknowledges that sailing is a potentially dangerous activity with inherent risks. These risks include strong winds and rough seas, sudden changes in weather, failure of equipment, boat handling errors, poor seamanship by other boats, loss of balance on an unstable platform and fatigue resulting in increased risk of injury. Inherent in the sport of sailing is the risk of permanent, catastrophic injury or death by drowning, trauma, hypothermia or other causes. The Organising Authority and Australian Sailing will not accept any liability for material damage or personal injury or death sustained in conjunction with or prior to, during, or after the event.

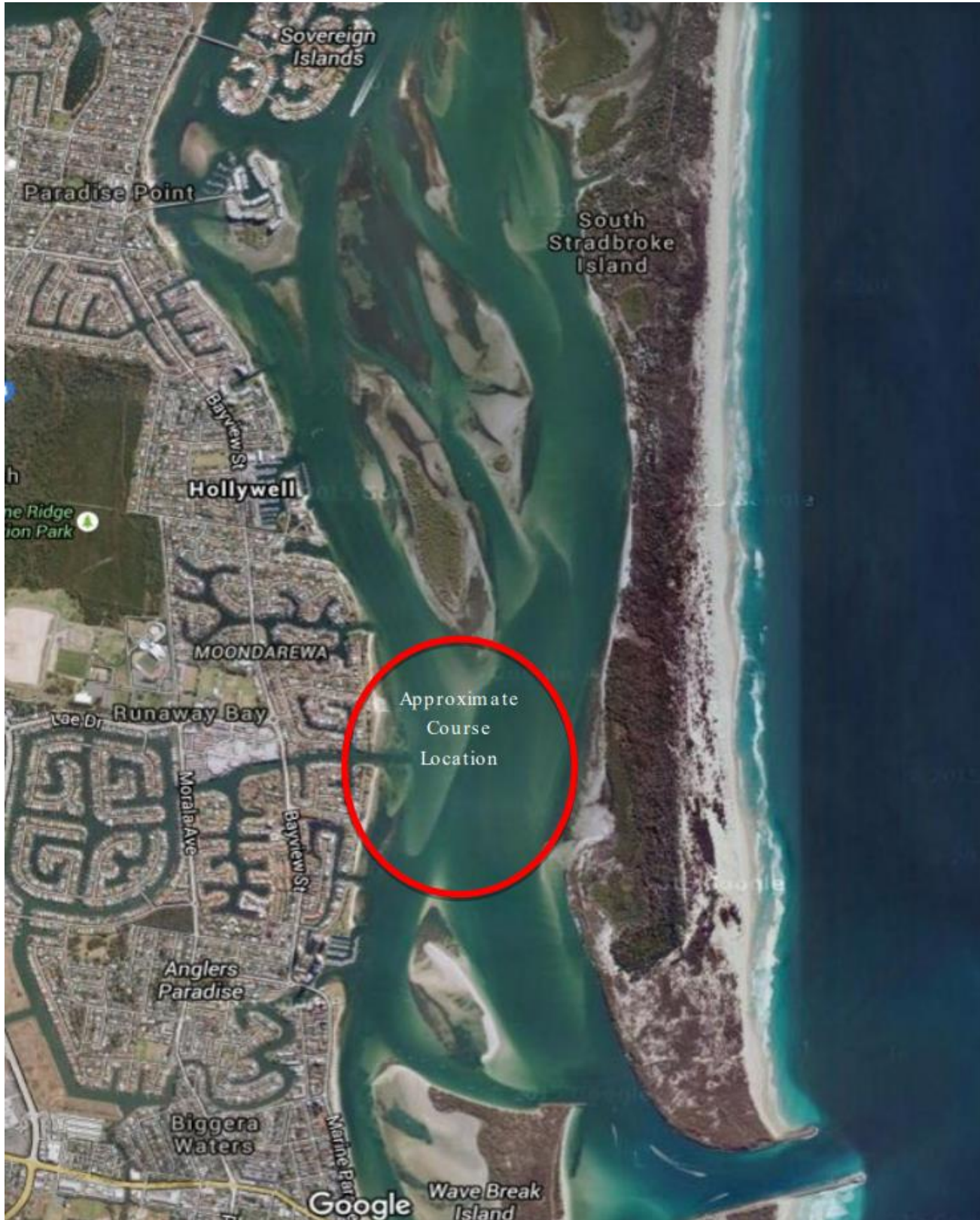
24. INSURANCE

- 24.1 Each participating boat shall be insured with valid third-party liability insurance with a minimum cover of AUD\$10,000,000 per incident or the equivalent.

25. MEDIA RIGHTS

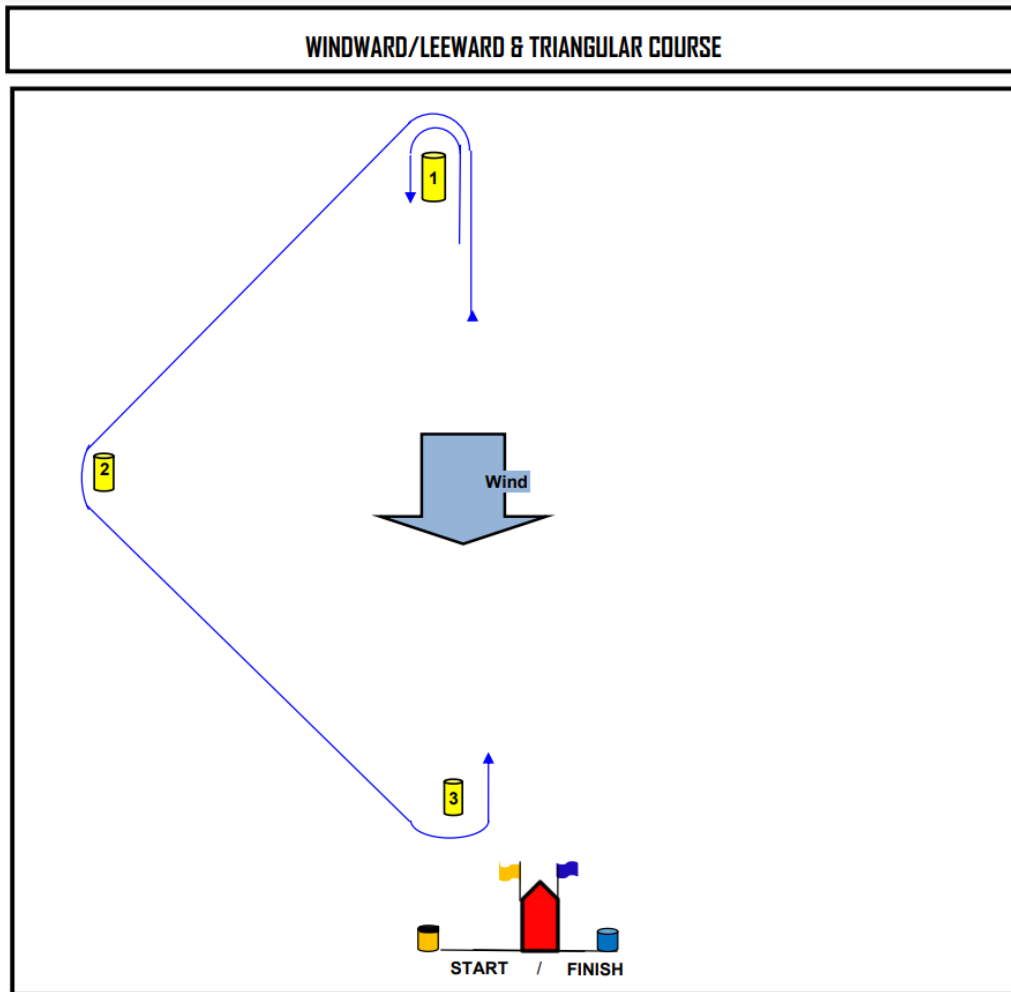
- 25.1 By participating in the Para Sailing International Championships competitors automatically grant to Southport Yacht Club as Organising Authority, World Sailing, Virtus Sport and their sponsors, the right in perpetuity to make, use and show, from time to time at their discretion, any photographs or motion pictures and live, taped or filmed television and other reproductions of the athlete during the period of the competition without compensation.
- 25.2 Competitors may be required for interviews or press conferences at the regatta.

26. ADDENDUM A – RACE AREA



27. ADDENDUM B - MARKS AND COURSE DIAGRAM

MARK	DESCRIPTION
START	Orange inflatable cylinder with a Black Top
FINISH	Blue inflatable cylinder
1 2 3	Yellow inflatable cylinder
Barging Buoy	Pink teardrop



COURSE	WINDWARD/LEEWARD & TRIANGLE MARK ROUNDINGS	TYPE
W1	START – 1 - FINISH	W/L
W2	START – 1 - 3 – 1 - FINISH	W/L
W3	START – 1 – 3 – 1 – 3 – 1 - FINISH	W/L
T1	START – 1 – 2 – FINISH	TRI
T2	START – 1 – 2 – 3 – 1 - FINISH	TRI
T3	START – 1 – 2 – 3 – 1 – 3 – 1 – 2 - FINISH	TRI
W(x) / P	As described at the Competitors Briefing	W/L / Passage

28. ADDENDUM C – SUPPORT PERSON REGULATIONS (SPRs)

1. General

- 1.1 These Support Person Regulations shall apply at all times while support persons are at the venue or on the water during the event period.
- 1.2 For the purposes of these regulations, a coach boat includes any boat that is under the control or direction of, or has on board, a person who is or may provide physical or advisory support to an athlete, including the gathering of data that may be used at a later time.
- 1.3 The Organizing Authority may inspect boats at any time to ensure that they comply with these regulations, and the person responsible for the boat shall facilitate such inspection.
- 1.4 An alleged breach of any of these regulations may be referred to the Protest Committee for a hearing. As a result of the hearing the Protest Committee may take action under RRS 64.4 or exclude the person from the event or venue or remove any privileges or benefits for a specified period or for the remainder of the competition. Note also, action may be taken under RRS 69.2.
- 1.5 The Organizing Authority may change these regulations at any time. Any changes will be posted on the Official Notice Board.
- 1.6 The Organizing Authority may, at its discretion, refuse to register coach boats not deemed to be suitable. Generally, open boats more than 4.0m and less than 7.5m in length and having minimal or no superstructure (cabin, coach house, bridge, etc.) are considered suitable.
- 1.7 All support persons shall be register at the regatta office by 18:00 on the day before the first race. Coach boats, designated drivers and support persons shall be registered at the Regatta Office either before leaving the venue by water for the first time or by 12:00 on the day before the first race of the Event that it is supporting, whichever is earlier.
 - 1.7.1 Each boat shall be insured with valid third-party liability insurance with a minimum coverage of AUD \$10,000,000 (or equivalent) per incident.
 - 1.7.2 Only accredited persons may be designated drivers.
 - 1.7.3 The person registering the coach boat shall confirm that:
 - (a) a valid insurance certificate showing proof of third-party liability coverage as required by 1.7.1 has been obtained;
 - (b) each designated driver has a powerboat driving license recognized by a national authority appropriate to that boat; and
 - (c) anyone who will be using a radio has an appropriate radio operation license recognized by a national authority.
- 1.8 Support person vessels shall be marked with a number provided by the Organizing Authority and shall be displayed at all times while afloat in accordance with NOR 15.1

2. Sailing Venue

- 2.1 Coach boats shall use the designated slipway/area for launching. Once launched, trailers shall be moved immediately to the trailer park or as otherwise directed by the Organising Authority.
- 2.2 Only registered coach boats will be allowed into the sailing venue.
- 2.3 When not in use, coach boats shall be berthed at the sailing venue in the allocated areas for coach boats for the entire time that these SPRs apply.
- 2.4 Coach boats shall not use the dinghy launching ramps or pontoons for any purpose whatsoever, including mooring, launching and retrieval, and loading and unloading of equipment unless authorised by a Race Official.

3. Safety

- 3.1 Coach boats shall carry on board:
 - (a) life jackets / buoyancy aid for all passengers and the driver;
 - (b) first-aid kit;
 - (c) VHF radio;
 - (d) device for making a sound signal;
 - (e) compass;
 - (f) adequate anchor and tackle for conditions and depth;
 - (g) tow rope (minimum 15m long and 10mm thick);
 - (h) operational engine kill cord (also known as a safety lanyard or automatic engine immobiliser);
 - (i) hand pump or bailer;
 - (j) knife; and
 - (k) any additional safety equipment required by local maritime law.
 - (l) Life jackets shall be worn at all times when afloat. It is strongly recommended that the kill cord is used at all times when the engine is running.
- 3.2 The maximum plated / certified passenger limits for the boat shall never exceed.
- 3.3 The registered drivers are responsible for overseeing the safe operation of their coach boats on the water, including knowledge of who is afloat and ensuring their safe return to the venue.
- 3.4 At all times, support persons including the registered driver(s) of a coach boat shall comply with directions given by or under the authority of a Race Official. This includes assisting in rescue operations when requested to do so.
- 3.5 Coach boats shall comply with local harbour and marina regulations, including speed limits.

4. General Restrictions

- 4.1 The registered driver(s) of a coach boat will be responsible for the control of the boat at all times and will be held responsible for any inappropriate behaviour, dangerous actions or improper practices, or actions affecting the fairness or safety of competition.
- 4.2 Coach boats shall not leave any device, piece of equipment, buoy, marker or similar item permanently in the water. Temporary use of floating objects is allowed for current measurement. These objects shall be removed as soon as the measurement has been taken.
- 4.3 Coach boats shall take particular care to minimise their wash when transiting the course areas.

5. Drones

The use of drones is prohibited.

6. Support Boat Restricted Areas

6.1 Support boats shall not be:

- 6.1.1 closer than 100m to any boat racing;
 - 6.1.2 within 100m to leeward of the starting line or within 100m of its marks from the time of the preparatory signal until all boats have left the starting area or the Race Committee signals a postponement, general recall or abandonment;
 - 6.1.3 between any boat racing and the next mark of the course;
 - 6.1.4 within 100m of any mark of the course while boats are in the vicinity of that mark;
 - 6.1.5 within 100m of the finishing line and marks while boats are finishing; and
- 6.2 Support boats should proceed around the racing area in such a way to minimise the effect their wash will have on boats racing. Boats that are motoring above five knots shall remain at least 150m from any boat racing.
- 6.3 Between sequences of races or when all racing for that Course Area has been postponed or abandoned, support boats may enter the Course Area to service their athletes, but shall restrict their speed to five knots. If further racing is to take place, support boats shall then comply with the applicable SPRs.
- 6.4 If flag V is displayed on the Race Committee signal boat, Support boats shall follow any directions and these over-ride any conflicting rules in these SPRs.