



# 2023/24 Sailing Season

## INSHORE DIVISION

## SAILING INSTRUCTIONS





ID – INSHORE DIVISION SCHEDULE – 2023/2024	
Brass Monkey 1/14	Wednesday 3rd May
Brass Monkey 2/14	Wednesday 10th May
Winter Passage 1/9	Saturday 13th May
Brass Monkey 3/14	Wednesday 17th May
Winer Passage 2/9	Saturday 20th May
Brass Monkey 4/14	Wednesday 24th May
Brass Monkey 5/14	Wednesday 31st May
Winter Passage 3/9	Saturday 3rd June
Brass Monkey 6/14	Wednesday 7th June
Brass Monkey 7/14	Wednesday 14th June
Winter Passage 4/9	Saturday 17th June
Brass Monkey 8/14	Wednesday 21st June
Brass Monkey 9/14	Wednesday 28th June
Winter Passage 5/9	Saturday 1st July
Brass Monkey 10/14	Wednesday 5th July
Brass Monkey 11/14	Wednesday 12th July
Winter Passage 6/9	Saturday 15th July
Brass Monkey 12/14	Wednesday 19th July
Brass Monkey 13/14	Wednesday 26th July
Winter Passage 7/9	Saturday 29th July
Brass Monkey 14/14	Wednesday 9th August
Winter Passage 8/9	Saturday 12th August
Winter Passage 9/9	Saturday 26th August
JaM 1/14 (Jeff Thorpe Memorial)	Wednesday 6th September
RTC 1/14	Wednesday 13th September
Summer RTC 1/7	Saturday 16th September
JaM 2/14	Wednesday 20th September
Summer Passage 1/14	Saturday 23rd September
RTC 2/14	Wednesday 27th September
JaM 3/14	Wednesday 4th October
Summer Passage 2/14	Saturday 7th October
RTC 3/14	Wednesday 11th October



<b>JaM 4/14</b>	Wednesday 18th October
<b>Summer RTC 2/7</b>	Saturday 21st October
<b>RTC 4/14</b>	Wednesday 25th October
<b>Summer Passage 3/14</b>	Saturday 28th October
<b>JaM 5/14</b>	Wednesday 1st November
<b>Summer RTC 3/7</b>	Saturday 4th November
<b>RTC 5/14</b>	Wednesday 8th November
<b>Summer Passage 4/14</b>	Saturday 11th November
<b>JaM 6/14</b>	Wednesday 15th November
<b>RTC 6/14</b>	Wednesday 22nd November
<b>Summer Passage 5/14</b>	Saturday 25th November
<b>JaM 7/14</b>	Wednesday 29th November
<b>Summer RTC 4/7</b>	Saturday 2nd December
<b>RTC 7/14</b>	Wednesday 6th December
<b>Summer Passage 6/14</b>	Saturday 9th December
<b>Xmas Sail</b>	Wednesday 13th December
<b>Summer Passage 7/14</b>	Saturday 16th December
<b>Summer RTC 5/7</b>	Saturday 13th January
<b>JaM 8/14</b>	Wednesday 17th January
<b>Summer Passage 8/14</b>	Saturday 20th January
<b>RTC 8/14</b>	Wednesday 24th January
<b>JaM 9/14</b>	Wednesday 31st January
<b>Summer Passage 9/14</b>	Saturday 3rd February
<b>RTC 9/14</b>	Wednesday 7th February
<b>JaM 10/14</b>	Wednesday 14th February
<b>Summer Passage 10/14</b>	Saturday 17th February
<b>RTC 10/14</b>	Wednesday 21st February
<b>JaM 11/14</b>	Wednesday 28th February
<b>RTC 11/14</b>	Wednesday 6th March
<b>Summer RTC 6/7</b>	Saturday 9th March
<b>JaM 12/14</b>	Wednesday 13th March
<b>Summer Passage 11/14</b>	Saturday 16th March
<b>RTC 12/14</b>	Wednesday 20th March
<b>Summer Passage 12/14</b>	Saturday 23rd March



JaM 13/14	Wednesday 27th March
RTC 13/14	Wednesday 3rd April
Summer RTC 7/7	Saturday 6th April
JaM 14/14	Wednesday 10th April
Summer Passage 13/14	Saturday 13th April
RTC 14/14	Wednesday 17th April
Summer Passage 14/14	Saturday 20th April

Additional SYC SPECIAL EVENTS Available	
Event / Regatta Name	Date
CRAB ISLAND CLASSIC	Saturday 22 <sup>nd</sup> July 2023
SAIL PAST & BLESSING THE FLEET	Saturday 9 <sup>th</sup> September 2023
BREAKING OF THE FLAG CEREMONY & DA\$H 4 CA\$H	Sunday 10 <sup>th</sup> September 2023
SAIL PARADISE REGATTA	Saturday 30 <sup>th</sup> Septmeber – Monday 2 <sup>nd</sup> October 2023
BURLEIGH BASH	Sunday 29 <sup>th</sup> October 2023
TWO HANDED RACE	Saturday 2 <sup>nd</sup> March 2024
DUX BIRTHDAY CELEBRATIONS	Sunday 3 <sup>rd</sup> March 2024
LADIES DAY RACE	Saturday 27 <sup>th</sup> April 2024

INSHORE DIVISION SERIES FEES	
BLOCK WHOLE SEASON DISCOUNT (64 Races)	\$700.00
BRASS MONKEY (15 Races)	\$160.00
WINTER SERIES (8 Races)	\$95.00
SUMMER SERIES (13 Races)	\$210.00
WEDNESDAY JAM SERIES (14 Races)	\$160.00
WEDNESDAY RTC SERIES (14 Races)	\$265.00
Casual Race Entry (per race day)	\$20.00 SYC Member \$30.00 Non SYC Member (max entry 3)



#### SAILING COMMITTEE DIVISIONAL REPRESENTATIVES:

##### SYC Vice Commodore of Sail:

Glenn Burrell                      0411 422 232                      [glenn@aquaticelements.com.au](mailto:glenn@aquaticelements.com.au)

##### SYC Sailing Operations Manager:

Simon Turpin                      0400 558 917                      [sailing.ops@sycgc.com.au](mailto:sailing.ops@sycgc.com.au)

##### OD - Offshore Division Representative:

Barry Berg                      0400 110 555                      [barry.wildstyle@gmail.com](mailto:barry.wildstyle@gmail.com)

##### TT – Thursday Twilight Division Representative:

Peter Karlovic                      0400 391 561                      [sailorpk@outlook.com](mailto:sailorpk@outlook.com)

##### ID – Inshore Division Representative:

Wayne Kirby                      0418 950 250                      [wayne@kirbyfamily.id.au](mailto:wayne@kirbyfamily.id.au)

##### OTBC – Off the Beach Catamaran Division Representative:

David Chester                      0431 316 574                      [david\\_chester202@hotmail.com](mailto:david_chester202@hotmail.com)

##### OTBD – Off the Beach Dinghy Division Representative:

Stuart Waters                      0400 155 600                      [stuartwaters@live.com.au](mailto:stuartwaters@live.com.au)

##### HC – Handicap Committee Representatives:

Russell Birse, Ian Ball, Colin Metcher.                      [sailing.reception@sycgc.com.au](mailto:sailing.reception@sycgc.com.au)



## TABLE OF CONTENTS

1. RULES.....	7
2. ELIGIBILITY .....	7
3. COMMUNICATION .....	7
3. CHANGES TO SAILING INSTRUCTIONS.....	8
4. SIGNALS MADE ASHORE.....	8
5. SCHEDULE OF RACES.....	8
6. SAIL RESTRICTIONS.....	8
7. RACING AREA .....	9
8. CLASS FLAGS.....	9
9. COURSES .....	9
10. MARKS .....	9
11. AREAS THAT ARE OBSTRUCTIONS .....	9
12. THE STARTS .....	10
(RTC) Round The Cans Series (RTC).....	10
JaM Series .....	10
Summer Passage, Brass Monkey & Winter Series Starts .....	11
13. CHANGE OF THE NEXT LEG OF THE COURSE .....	11
14. SHORTENED COURSE .....	11
15. THE FINISH .....	11
Round The Cans Series (RTC) .....	11
Summer Passage, JaM, Brass Monkey & Winter Series .....	11
16. PENALTY SYSTEM .....	12
17. TIME LIMITS .....	12
18. PROTESTS.....	12
19. SCORING .....	13
20. SAFETY REGULATIONS.....	13
21. REPLACEMENT, SUBSTITUTION OR MODIFICATION OF CREW OR EQUIPMENT.....	14
22. EQUIPMENT AND MEASUREMENT CHECKS .....	14
23. OFFICIAL BOATS .....	14
24. SUPPORT TEAMS.....	14
25. RUBBISH DISPOSAL .....	14
26. RACE PRIZES .....	14
Daily Prizes .....	14
Perpetual Trophies .....	14
27. DISCLAIMER OF LIABILITY.....	15
28. INSURANCE .....	15
29. MEDIA RIGHTS .....	15
30. FURTHER INFORMATION.....	15
ATTACHMENT A - Approximate Racing Area.....	16
ATTACHMENT B - Approximate location for RTC Courses.....	17
ATTACHMENT C - Buoys / Marks & Courses .....	18
ATTACHMENT D - ID PASSAGE DIAGRAM .....	20
<b>D</b> ATTACHMENT D - ID PASSAGE DIAGRAM.....	20
ATTACHMENT E - ID ROUND THE CANS SERIES (RTC) DIAGRAM.....	21
SELF DECLARATION .....	22





## 1. RULES

- 1.1. The Organising Authority (OA) is Southport Yacht Club Inc.
- 1.2. Races will be governed by the current rules as defined in the Racing Rules of Sailing (RRS) and the Prescriptions of Australian Sailing (AS).
- 1.3. A minimum of five (5) participants are required to constitute a race. If there are less than the required amount the race shall be abandoned.
- 1.4. All boats shall comply with AS Special Regulations (SR): Part 1 – Category7 *Plus* (Additional items required by the OA).
- 1.5. All boats shall supply at time of entry a current AS SR Equipment Audit Form Category 7 Plus (or higher) that has been certified by an approved AS Club / National Equipment Auditor. AS SR Equipment Audit forms are available from the OA website.
- 1.6. All boats shall comply with the Transport Operations (Marine Safety) Act 1994 and Regulation. In the event of a reportable Marine Incident the SYC Sailing Officer is to be notified as soon as practical; but no later than 1 hour after the last boat has finished, a copy of the MSQ Marine Incident Report is required to be lodged with the OA at the same time it is lodged with Maritime Safety Queensland.
- 1.7. The *International Regulations for the Prevention of Collisions at Sea 1972* (COLREGS) shall apply at all times. The *Racing Rules of Sailing* (RRS) will apply only between those ships that are participating in the event, for the duration of the event. Should interaction occur with non-participating ships, then COLREGS shall apply to all ships and shall over-ride all other rules. This is a condition governed by local Statutory Authorities for the OA's approved Aquatic Event Permit.
- 1.8. RRS Appendix T – Arbitration applies.
- 1.9. Compliance with SYC's current Sailing Season Policy.
- 1.10. All one-design classes must comply with their Class Association rules.
- 1.11. All competitors are reminded of RRS 1.1 Helping Those in Danger; A boat, competitor or support person shall give all possible help to any person or vessel in danger.

## 2. ELIGIBILITY

- 2.1 Inshore races are open to all Monohull and Multihull boats (both trailable and fixed keel) on the register of a yacht or sailing club affiliated with AS.
- 2.2 Off the Beach classes are not permitted to sail in Inshore Races.

## 3. COMMUNICATION

- 3.1 On each race day before 1100hrs, the OA shall email the "Primary Contact Person" of each boat, a "SYC Inshore Division Briefing & Communication Notice".
- 3.2 This person shall then provide a "Read Receipt" of this Notice, providing acknowledgement and the boats intention to race.
- 3.3 On the water, the Race Committee intends to monitor and communicate with competitors on VHF09 radio channel.



### 3. CHANGES TO SAILING INSTRUCTIONS

- 3.1 Changes to Sailing Instructions will be posted on the Official Notice Board and will be emailed to competitors not less than sixty (60) minutes before the scheduled start time of the first race of the day, except that any change to the schedule of races will be posted by 1800 hours on the day before it will take effect.
- 3.2 On each day before RTC race, OA shall email the “Primary Contact Person” of each boat, an “SYC Round the Cans Briefing & Communication Notice” advising if the course will be North or South of Hollywell.

### 4. SIGNALS MADE ASHORE

- 4.1 Signals made ashore will be displayed on the official flag located on the SYC Hollywell Race Control Tower.
- 4.2 When flag AP is displayed ashore, ‘1 minute’ is replaced with ‘not less than 30 minutes’ in the race signal AP.
- 4.3 When a visual signal is displayed over a course flag or class flag, it applies to that course area/class only.

### 5. SCHEDULE OF RACES

- 5.1 The schedule of races is as per the list at the beginning of these SI’s.
- 5.2 A Skippers Briefing will be held on Saturday race days in front of the Official Noticeboard at SYC Hollywell. Briefing time will be 11:00hrs for all the summer race series and 10:00hrs for Winter Passage series.

### 6. SAIL RESTRICTIONS

- 6.1 Substitution of damaged or lost equipment will not be allowed unless authorized by the Race Committee. Requests for substitution shall be made to the Sailing Office at the first reasonable opportunity.
- 6.2 JaM Series – This series is designed for the use of Jib And Mains only. The difference between a headsail and a spinnaker is that the width of a headsail, measured between the midpoints of its luff and leech, is less than 75% of the length of its foot. The use of a Gennaker, Blooper, Spinnaker, Code Zero or any other purpose-built downwind sail is prohibited.  
The headsail must be fully hanked, or attached by means of a luff groove device, to the forestay. Spinnaker poles and/or whisker poles are allowed for poling out headsails.  
Boats shall use only one mainsail throughout the Race but may change their headsail throughout the Race.





## 7. RACING AREA

- 7.1 Attachment A & B shows the approximate location of the SYC Inshore Division Racing Area.

## 8. CLASS FLAGS

FLEET	FLAG
Inshore Division	Code Flag Q

## 9. COURSES

- 9.1 The diagrams and tables in ATTACHMENT C and E show the courses to be sailed for the Round the Cans Series (RTC), including the order in which marks are to be passed, and the side on which each mark is to be left.
- 9.2 The course number to be sailed will be indicated by the Course Board being displayed on the start vessel.
- 9.3 Attachment C & D shows the courses to be sailed for the Summer Passage, JaM Series, Round the Cans Series (RTC), Brass Monkey Series including the order in which marks are to be passed, and the side on which each mark is to be left.
- 9.4 The course number to be sailed will be indicated by a Course Board being displayed on the Race Control Tower or the Start Vessel.

## 10. MARKS

- 10.1 Marks, including start and finish marks, are described in Attachment C – SYC DESIGNATED MARKS.
- 10.2 All boats shall maintain a minimum distance of 3 metres from all International Association of Marine Aids to Navigation and Lighthouse Authorities (IALA) marks\*. This is a condition governed by local Statutory Authorities for the OA's approved Aquatic Event Authority. Any boats failure to comply with this minimum 3 metre distance, may jeopardise all future ID racing for all boats.
- 10.3 All boats shall give due consideration to the weather conditions including tidal effect (current) wind conditions and their intended course when passing or rounding an IALA mark.
- 10.4 \*Competitors may refer to the Maritime Safety Queensland Boating Maps located at <http://www.msq.qld.gov.au/Boating-maps/Gold-Coast-guides> for detailed maps.

## 11. AREAS THAT ARE OBSTRUCTIONS

- 11.1 Areas outside of the intended channel(s) defined by the IALA marks north of and including the Crab Island West Cardinal "Q(9)15s" are considered an obstruction. For the purposes of this definition, it shall be considered that a competitor has remained clear of the obstruction provided they have left all IALA marks to their required side.
- 11.2 The finish line is an obstruction, unless finishing. Boats crossing the finish line incorrectly will be scored Did Not Finish (DNF) without a hearing. This changes RRS 35, A4 and A5.



## 12. THE STARTS

SERIES NAME	WARNING SIGNAL (Not Before)
Wednesday JaM Series (Pursuit)	from 1630hrs
Round the Cans Series (RTC)	1655hrs
Brass Monkey Series	1625hrs
Winter Passage Series	1125hrs
Summer Series Passage/RTC	1225 hrs

### (RTC) Round The Cans Series (RTC)

- 12.1 Races will be started in accordance with RRS Rule 26.
- 12.2 The starting line will be between a staff displaying an orange flag on the start vessel at the starboard end and the course side of the port-end starting mark.
- 12.3 Boats whose warning signal has not been made shall avoid the starting area during the starting sequence for other classes.
- 12.4 A boat starting later than four (4) minutes after her starting signal will be scored Did Not Start (DNS) without a hearing. This changes rule A4.

### JaM Series

- 12.5 An orange On Station flag will be raised with one sound signal, ten (10) minutes prior to the first boats start time.
- 12.6 A time synchronisation sound signal may be broadcasted at 1630hrs.
- 12.7 Races will be started using allocated handicapped start times for each boat (a Pursuit Race)
- 12.8 Boats shall start no earlier than their allocated start time. All times are listed as Australian Eastern Standard Time (AEST). Syncing of your clock is recommended at: <http://www.timeanddate.com/worldclock/fullscreen.html?n=47>
- 12.9 A sound signal will be given to any boat starting early. They will be required to restart or be scored On Course Side (OCS).
- 12.10 A boat which is OCS may be advised via VHF09.
- 12.11 All boats shall keep clear of the start line and not cross in either direction within five (5) minutes prior to their designated start time. Boats in breach of this will be scored Did Not Start (DNS) without a hearing. This changes RRS Rule A4.
- 12.12 A 10 second count down and sound signal may be given for the first boat due to start.
- 12.13 A boat starting later than ten (10) minutes after her scheduled start time will be scored DNS without a hearing. This changes RRS Rule A4.
- 12.14 Definitions – Racing. A boat is racing from her preparatory signal until she finishes and clears the finishing line and marks or retires, or until the race committee signals a general recall, postponement or abandonment. The preparatory signal for a boat shall be 4 (four) minutes before her allocated handicap start time. This changes RRS26.



### **Summer Passage, Brass Monkey & Winter Series Starts**

- 12.15 Races will be started in accordance with RRS Rule 26.
- 12.16 The starting line will be between a staff displaying an orange flag on the Hollywell Tower on the western end of the line and the course side of the start buoy.
- 12.17 Where an Official Boat is used, the start line will be between a staff displaying an orange flag on the vessel and the course side of the start mark.
- 12.18 A boat starting later than ten (10) minutes after her starting signal will be scored DNS without a hearing. This changes RRS Rule A4.

## **13. CHANGE OF THE NEXT LEG OF THE COURSE**

- 13.1 The Race Committee may change a leg of the course that begins at a rounding mark by changing the position of the next mark (or the finishing line) and signalling all boats before they begin the leg. The next mark need not be in position at that time.

## **14. SHORTENED COURSE**

- 14.1 The Race Committee may shorten course at any part of the course. Boats shall finish between the Race Committee vessel displaying Code Flag "S" and a prominent feature of their choice (which may include any laid mark).

## **15. THE FINISH**

### **Round The Cans Series (RTC)**

- 15.1 The finishing line will be between a staff displaying a blue flag on the finishing boat at the port-end and the course side of the starboard-end finishing mark.
- 15.2 Where the SYC Hollywell Tower is used, the finishing line will be between a staff displaying a blue flag on the SYC Hollywell Tower and the course side of a finishing mark.

### **Summer Passage, JaM, Brass Monkey & Winter Series**

- 15.4 When the SYC Hollywell Tower is used, the finishing line will be between a staff displaying an orange flag on the Hollywell Tower and the course side of a finishing mark.
- 15.5 When an Official Boat is used, the finishing line will be between a staff displaying a blue flag on the vessel and the course side of the finishing mark. The finishing mark may be any laid mark, lateral mark or prominent feature of their choice.
- 15.6 For the Brass Monkey Series, the finishing line will be between an orange cylindrical buoy with a white strobe and the Race Control Tower.



## 16. PENALTY SYSTEM

- 16.1 Rule 44.1 is changed so that the Two-Turns Penalty is replaced by a One-Turn Penalty, including one tack and one gybe in the same direction.
- 16.2 To get clear after grounding or colliding with a vessel or object, a boat may use an engine or receive assistance to get clear. A one turn penalty shall be taken as soon as possible after the incident. A Self Declaration to the race committee shall be made as soon as possible. The starting handicap for the boat in the following race shall not be adjusted from the previous race. This changes RRS 44, A3.
- 16.3 A boat using an engine within 4 (four) minutes of her start, shall complete a one turn penalty to be taken as soon as possible after the start. A Self Declaration to the race committee shall be made as soon as possible. The starting handicap for the boat in the following race shall not be adjusted accordingly. This changes RRS 44, A3.

## 17. TIME LIMITS

- 17.1 Round the Cans Series (RTC) the time limit for the first boat in each class will be ninety (90) minutes.
- 17.2 Summer & Winter Series, the time limit for the first boat in each class will be one hundred and eighty (180) minutes.
- 17.3 Round the Cans Series (RTC), boats failing to finish within fifty (50) minutes after the first boat sails the course and finishes will be scored Did Not Finish (DNF) without a hearing. This changes rules 35, A4 and A5.
- 17.4 Summer Series, boats failing to finish within ninety (90) minutes after the first boat sails the course and finishes will be scored Did Not Finish (DNF) without a hearing. This changes rules 35, A4 and A5.
- 17.5 JaM Series time limit will be 1900hrs. Boats failing to finish within the Time Limit will be scored Did Not Finish (DNF) without a hearing. This changes Rule 35, A4 and A5.
- 17.6 Brass Monkey Series time limit will be 1830hrs. Boats failing to finish within the Time Limit will be scored Did Not Finish (DNF) without a hearing. This changes Rule 35, A4 and A5.
- 17.7 If the first boat does not reach the first mark within sixty (60) minutes, the race may be abandoned.

## 18. PROTESTS

- 18.1 RRS Appendix T- ARBITRATION applies.
- 18.2 Protest forms are available at the OA's Main Beach reception, Sailing Office at Hollywell and may also be downloaded from their website. Protests shall be delivered there within the Protest Time Limit.
- 18.3 The Protest Time Limit is forty-five (45) minutes after the last boat finishes. This also applies to all protests by the Race Committee and Protest Committee and requests for redress. This changes RRS 61.3 and 62.2.



## 19. SCORING

- 19.1 The low points scoring system of RRS Appendix A9 will apply.
- 19.2 For Boats that Did Not Finish (DNF) shall be scored points for the finishing place plus one (1) more than the number of boats that came to the starting area.
- 19.3 A boat that did not come to the starting area (DNC) shall be scored points for the finishing place one more than the number of boats entered in the series.
- 19.4 Four (4) races are required to constitute a series. When fewer than five (5) races have been completed, all scores shall count.
- 19.5 When five (5) to nine (9) races have been completed a boat's series score will be the total of her race scores excluding her worst score.
- 19.6 When ten (10) to twelve (12) races have been completed a boat's series score will be the total of her race scores excluding her two (2) worst scores.
- 19.7 When thirteen (13) or more races have been completed a boat's series score will be the total of her race scores excluding her three (3) worst scores.
- 19.8 When seventeen (17) or more races have been completed a boat's series score will be the total of her race scores excluding her four (4) worst scores.
- 19.9 The Race Committee at its discretion may award nil points to all competitors in any race in any series by notification prior to the start on the official noticeboard. Should the race committee enforce this rule, it cannot be protested, and redress cannot be applied for. This changes RRS 90.3(a) and RRS Appendix A.
- 19.10 If a race is abandoned due to lack of numbers, boats that are ready to sail with crew at Hollywell on the day, will be recorded as DNS, all other boats entered in the series will be recorded DNC.

## 20. SAFETY REGULATIONS

- 20.1 All helmspersons shall "Sign On" via VHF09 radio advising their Boat Name, Sail # and P.O.B. (Persons on Board) prior to their start time. Race Control will confirm recorded details for confirmation of "Sign On".
- 20.2 A boat that retires from a race shall notify the Race Committee as soon as possible via VHF09 radio including P.O.B.
- 20.3 Competitors must provide a clearly identifiable sail number on their mainsail as noted at time of Entry. A failure to carry clearly distinguishable sail numbers will result in a boat being scored as DNF without a hearing. This shall not provide grounds for redress.
- 20.4 Where lifelines complying with AS SR Part 1 Section 3 Rule 3.12 have not been fitted, all crew shall wear a visible life jacket, as per AS SR Part 1 Section 5.
- 20.5 In accordance with AS SR's, all boats must be fitted with Navigation Lights complying with IRPCAS. During the periods between the published Sunset and Sunrise times ([www.bom.gov.au](http://www.bom.gov.au)), and during times of restricted visibility, all boats must illuminate their Navigation Lights whilst on the water.
- 20.6 Boats failing to comply with any of these Safety Regulations will be scored ENP (Event Nominated Penalty) without a hearing. The penalty shall be 20% of the score for Did Not Finish, rounded to the nearest whole number (0.5 rounded upward). This changes RRS 44, A3, A4 and A5.



## 21. REPLACEMENT, SUBSTITUTION OR MODIFICATION OF CREW OR EQUIPMENT

- 21.1 Substitution of damaged or lost equipment will not be allowed unless authorized by the Race Committee. Requests for substitution shall be made to the committee at the first reasonable opportunity.
- 21.2 Failing to notify the SYC Sailing Office of changes to boats configuration or rating, may result in protest by the Race Committee. Penalties for these breaches may be less than disqualification if the Protest Committee so decides.

## 22. EQUIPMENT AND MEASUREMENT CHECKS

- 22.1 A boat or equipment may be inspected at any time for compliance with the class rules, notice of race and sailing instructions.
- 22.2 When instructed by a Race Official, a boat shall proceed to a designated area for inspection.

## 23. OFFICIAL BOATS

- 23.1 All official boats are numbered by the OA and marked with the OA Burgee.

## 24. SUPPORT TEAMS

- 24.1 Team leaders, coaches and other support personnel shall stay no less than one hundred (100) metres outside areas where boats are racing from the time of the preparatory signal for the first class to start until all boats have finished or retired or the race committee signals a postponement, general recall or abandonment.
- 24.2 No disturbing wash is to be created near a competitor on the racecourse.

## 25. RUBBISH DISPOSAL

- 25.1 Boats shall not put rubbish in the water. Rubbish may be placed aboard support and Race Committee boats.

## 26. RACE PRIZES

### Daily Prizes

- 26.1 The Skipper or a crew member of the boat must be present at daily Prize Presentations to receive prizes. Prizes not collected during the presentation will be redrawn to the next placings accordingly.
- 26.2 JAM Series – Three prizes will be awarded - First, Second and Third Place.
- 26.3 Summer Series, Round The Cans (RTC), Brass Monkey Series, Winter Series– Prizes will be awarded to 1st, 2nd and 3rd on corrected time. On or before 1900hrs.

### Perpetual Trophies

- 26.4 The annual Sailing Presentation will take place at a Clubhouse of SYC.
- 26.5 Only current financial members of the Southport Yacht Club Inc. are eligible for a season entry.
- 26.6 Only SERIES ENTRANTS are eligible for Sailing Season prizes at the annual Sailing Presentation event.
- 26.7 Other prizes may be awarded at the discretion of the OA.





## 27. DISCLAIMER OF LIABILITY

- 27.1 All those taking part in races conducted by the OA do so at their own risk and responsibility.
- 27.2 The OA, any sponsor and any party involved in the organisation of any event disclaims any and every responsibility for any loss, damage, injury to persons and/or things, both ashore and at sea, as a consequence of participation in any way in the races covered by these sailing instructions.
- 27.3 Attention is drawn to RRS 3 which states: "The responsibility for a boat's decision to participate in a race or to continue racing is hers alone."

## 28. INSURANCE

- 28.1 Each participating boat shall be insured with valid third-party liability insurance with a minimum cover of \$10M (AUD).

## 29. MEDIA RIGHTS

- 29.1 In participating in the ID, a competitor grants to the OA and the sponsors, the right in perpetuity, to make, reproduce, edit, use and show, from time to time and at their discretion, any motion pictures, still pictures and live, taped or film television and other reproductions of him/ her taken during the Sailing Season and to use his / her likeness, voice, name and any other information in any material related without compensation.

## 30. FURTHER INFORMATION

Should you require any future information, please do not hesitate to contact:

### ID – Inshore Division Representative

Wayne Kirby 0418 950 250

[wayne@kirbyfamily.id.au](mailto:wayne@kirbyfamily.id.au)

### Southport Yacht Club Inc. Sailing Office

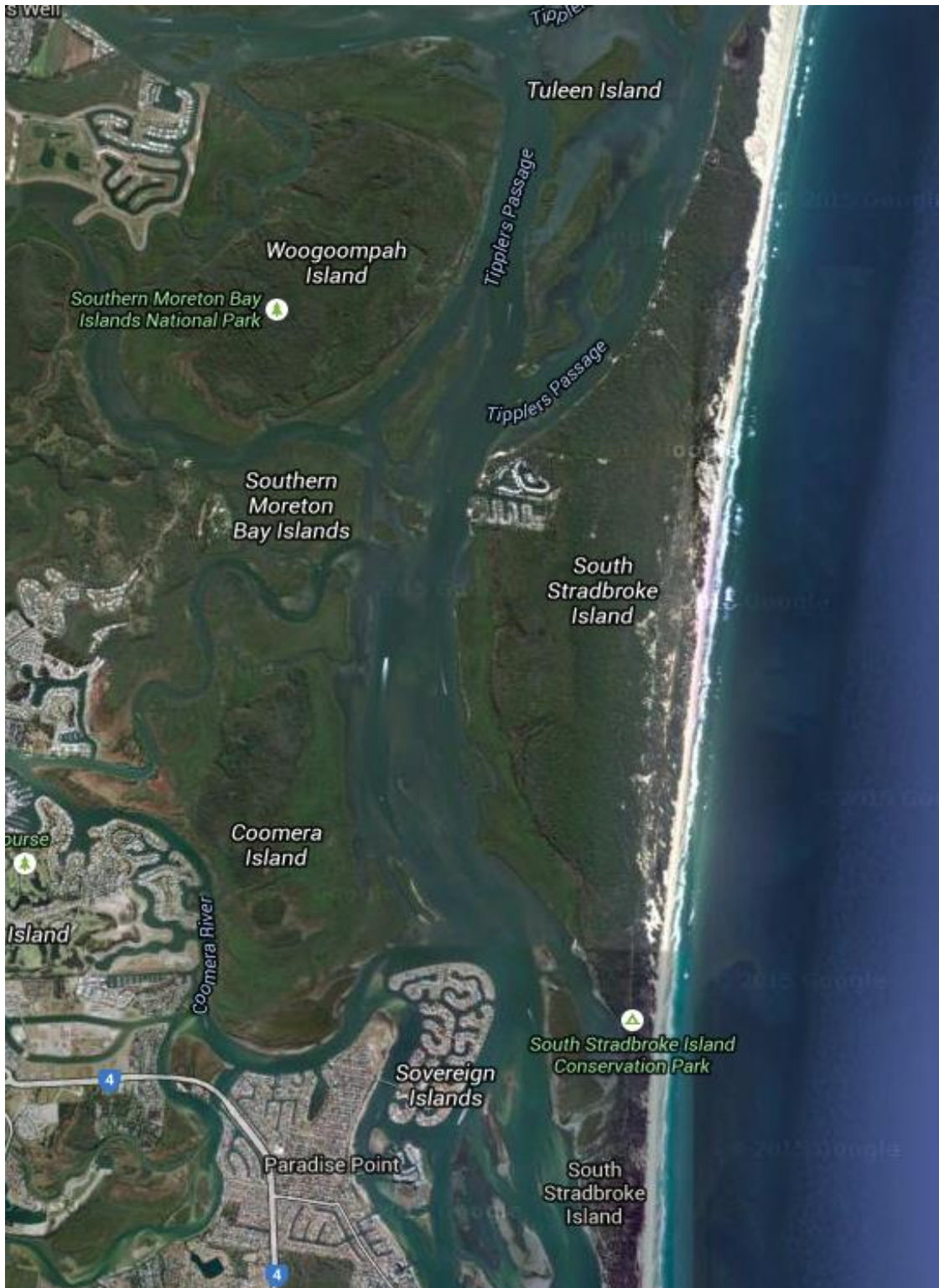
1 Marina Crescent, HOLLYWELL QLD 4216.

Phone: (07) 5537 7030

[sailing.reception@sycgc.com.au](mailto:sailing.reception@sycgc.com.au)



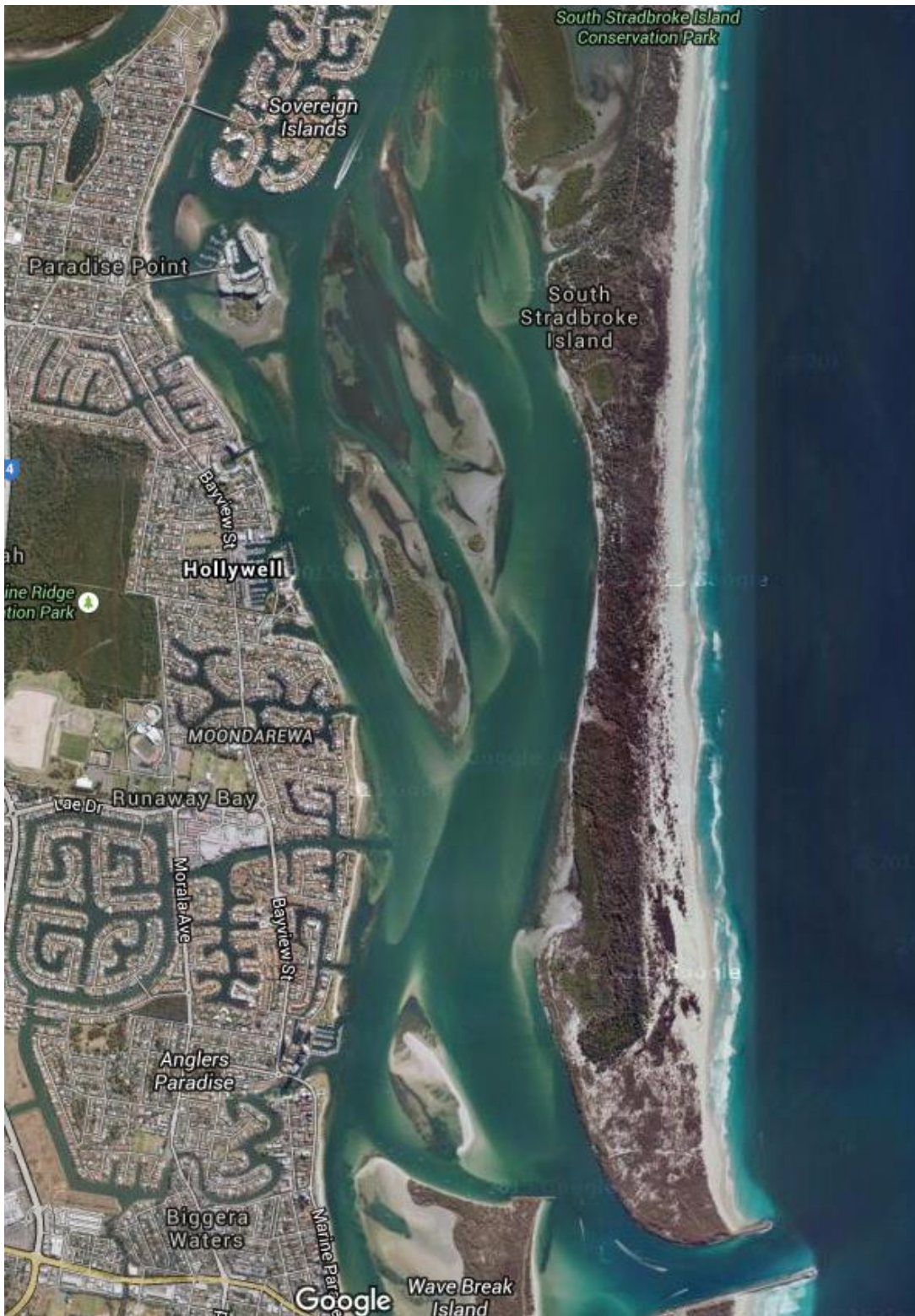
## ATTACHMENT A - Approximate Racing Area







## ATTACHMENT B - Approximate location for RTC Courses





## ATTACHMENT C - Buoys / Marks & Courses

BUOYS	DESCRIPTION
START / FINISH	Blue or Orange with Black Top inflatable cylinders
1a	Orange/Pink teardrop buoy
1 / 2 / 3 / X	Orange inflatable cone
Barging Buoy	Orange teardrop

DESIGNATED MARKS	LOCATION	Approx. COORDINATES	GPS
Hollywell Start / Finish	Tower/Starboard Lateral	27° 54.2'S   153° 24.3'E	
Main Beach Start / Finish	Starboard Lateral/D Arm	27° 58.4'S   153° 25.4'E	
Wavebreak Start	Port/Starboard Laterals	27° 55.9'S   153° 25.2'E	
Wavebreak Finish	Port Lateral/Special Mark	27° 56.4'S   153° 25.3'E	
Dux Start	Starboard Lateral/Special M	27° 49.1'S   153° 24.7'E	
Dux Finish	Port/Starboard Laterals	27° 48.8'S   153° 25.2'E	
A	Ephraim Is Special	27° 53.7'S   153° 24.3'E	
B	John Elkes Special	27° 55.0'S   153° 24.7'E	
C	Crab Is Port Lateral	27° 54.5'S   153° 24.9'E	
D	Sovereign Island Special Mark	27° 52.3'S   153° 24.8'E	
E	Coomera River East Cardinal		
H	Seaway East Cardinal	27° 56.2'S   153° 25.3'E	
W	Wasp Creek Port Lateral	27° 50.43'S   153° 23.7'E	



COURSE	MARK ROUNDINGS	TYPE
W1	START – 1 – FINISH	RTC
W2	START – 1 – 3 – 1 – FINISH	RTC
W3	START – 1 – 3 – 1 – 3 – 1 – FINISH	RTC
W4	START – 1 – 3 – 1 – 3 – 1 – 3 – 1 – FINISH	RTC
W5	START – 1 – 3 – 1 – 3 – 1 – 3 – 1 – 3 – 1 – FINISH	RTC
T1	START – 1 – 2 – FINISH	RTC
T2	START – 1 – 2 – 3 – 1 – FINISH	RTC
T3	START – 1 – 2 – 3 – 1 – 3 – 1 – 2 – FINISH	RTC
1	START – B – C – D – FINISH	PSG/WS/BM
2	START – D(s) – C(s) – B(s) – FINISH	PSG/WS/BM
3	START – A – H – FINISH	PSG/WS/BM
4	START – D – FINISH	PSG/WS/BM
5	START – H – A – FINISH	PSG/WS/BM
6	START – H – A(s) – W – FINISH	PSG/WS/BM
7	START – W – A(s) – H – FINISH	PSG/WS/BM
8	NOTIFIED AT BRIEFING	PSG/WS/BM
9	START – B – C – E – D – E – FINISH	PSG/WS/BM
10	START – E(s) – D(s) – E(s) – C – B – FINISH	PSG/WS/BM
11	START – A – B – A – FINISH	PSG/WS/BM/JAM
12	START – B – A – B – FINISH	PSG/WS/BM/JAM
13	START – D – B (WC) – A – FINISH	PSG/WS/BM/JAM
14	START – B – D (WC) – B – FINISH	PSG/WS/BM/JAM
1	START – B – C – D – FINISH	JAM
2	START – A – D(s) – C(s) – B(s) – FINISH	JAM
3	START – D – X – FINISH	JAM
4	START – X – D – FINISH	JAM

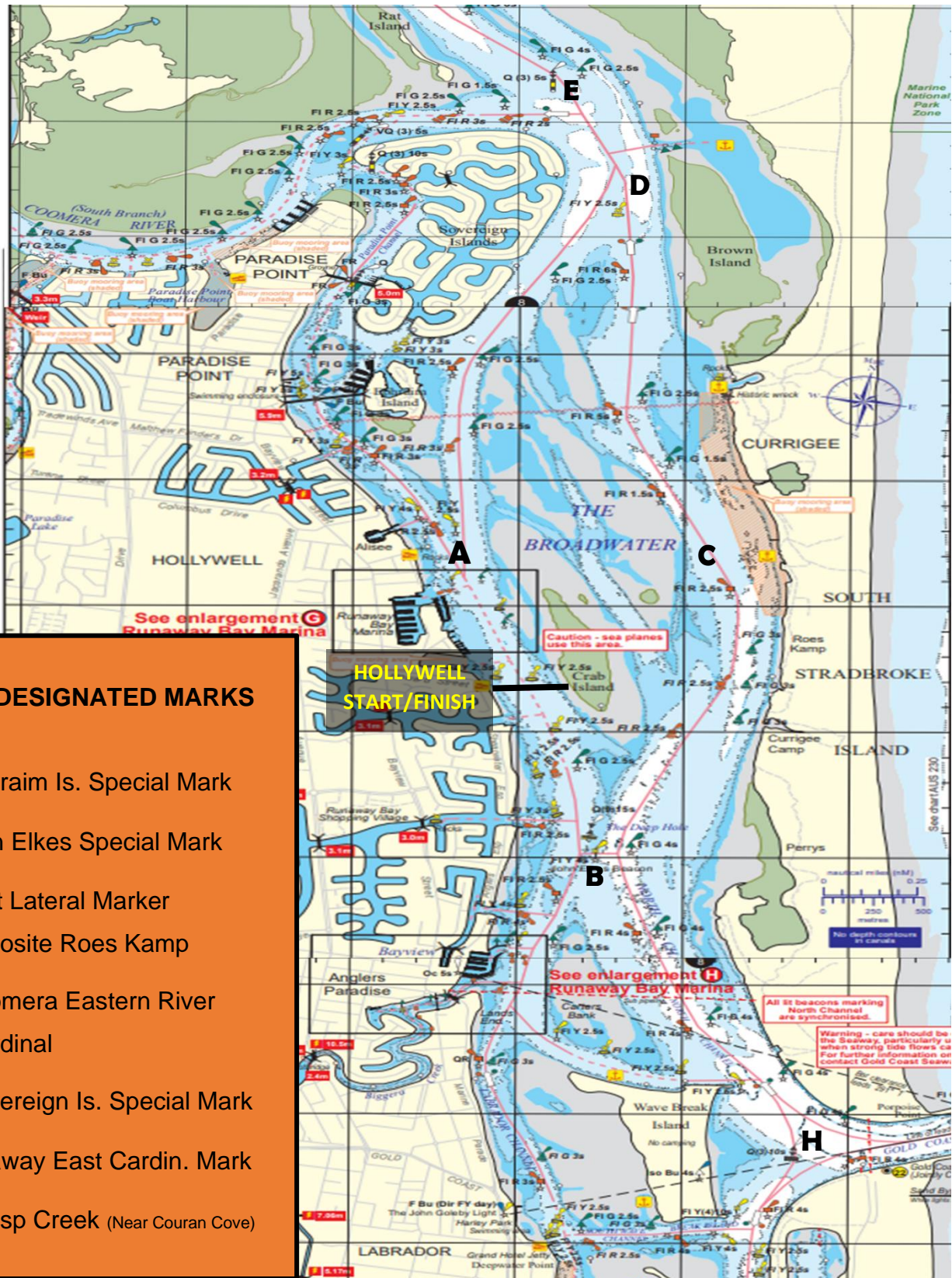
**NB:** ALL MARKS TO BE PASSED TO PORT UNLESS INDICATED BY (s) WHICH MUST BE PASSED TO STARBOARD.

WC = Western Channel





## ATTACHMENT D - ID PASSAGE DIAGRAM

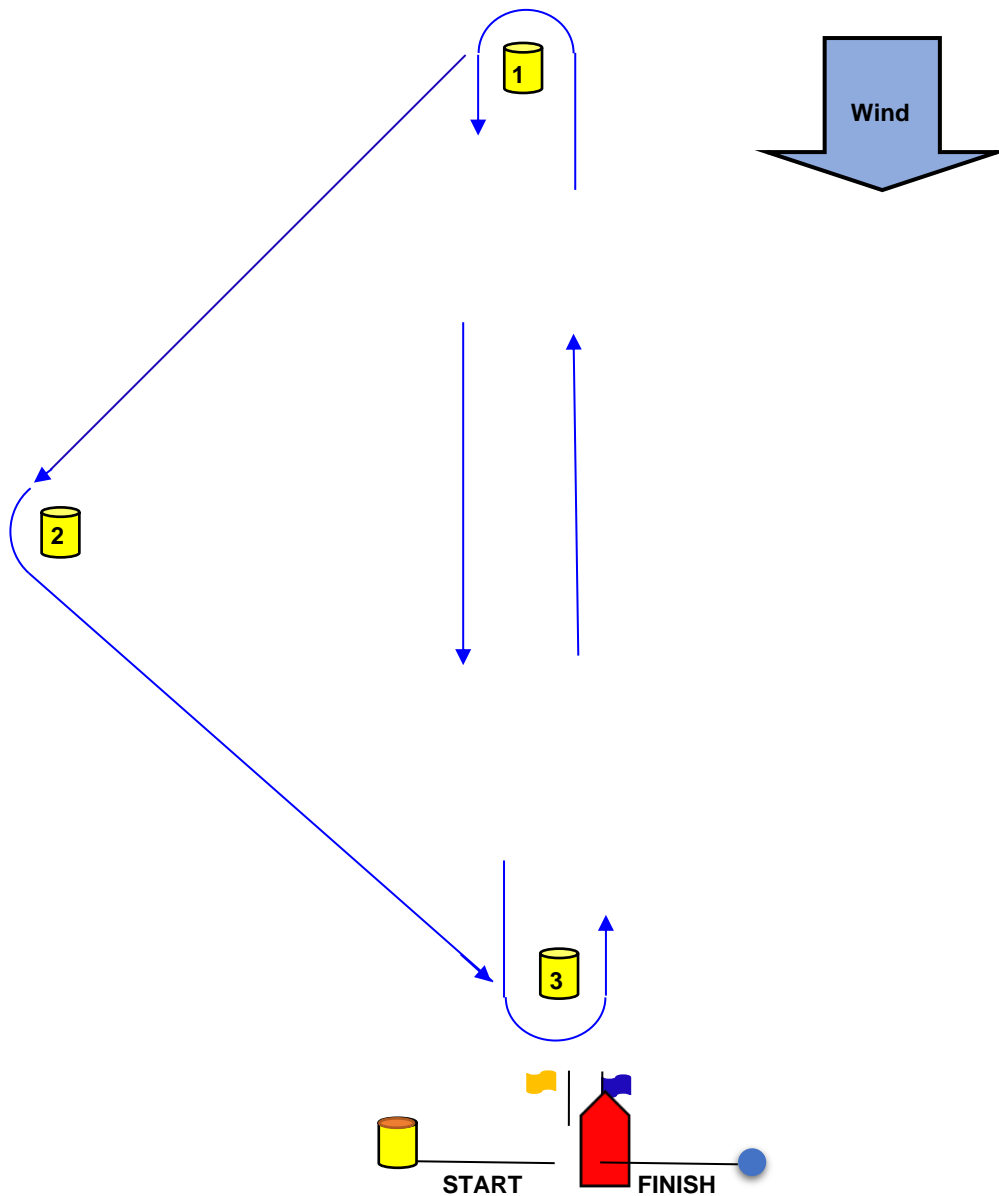






## ATTACHMENT E - ID ROUND THE CANS SERIES (RTC) DIAGRAM

### WINDWARD/LEEWARD & TRIANGULAR COURSE





## SELF DECLARATION

To: ID Race Committee

SOUTHPORT YACHT CLUB.

Phone (07) 5537 7030, **Mobile 0400 558 917**, [sailing.ops@sycgc.com.au](mailto:sailing.ops@sycgc.com.au)

BOAT NAME		SAIL NUMBER	
-----------	--	-------------	--

I declare that during our race the following Infringements occurred by us and / or Penalties were taken by us and / or Rules were NOT observed by us, with an explanation given as follows:


Witnessed by others being (Boat Name/s, Skipper/Crew Name/s):


Date of Race: \_\_\_\_/\_\_\_\_/\_\_\_\_

Series Name: \_\_\_\_\_.

Name of Person-In-Charge: \_\_\_\_\_.

Signature of Person-In-Charge: \_\_\_\_\_.