



# 2023/24 Sailing Season

## OTB DINGHY DIVISION

### SAILING INSTRUCTIONS





### OFF THE BEACH DINGHY SERIES SCHEDULE 2023/2024

<b>Polar Bear 1/8</b>	Sunday 7 <sup>th</sup> May
<b>Polar Bear 2/8</b>	Sunday 21 <sup>st</sup> May
<b>Polar Bear 3/8</b>	Sunday 4 <sup>th</sup> June
<b>Polar Bear 4/8</b>	Sunday 18 <sup>th</sup> June
<b>Polar Bear 5/8</b>	Sunday 2 <sup>nd</sup> July
<b>Polar Bear 6/8</b>	Sunday 16 <sup>th</sup> July
<b>Polar Bear 7/8</b>	Sunday 13 <sup>th</sup> August
<b>Polar Bear 8/8</b>	Sunday 27 <sup>th</sup> August
<b>Championship 1/8</b>	Sunday 17 <sup>th</sup> September
<b>Sprints 1/9</b>	Sunday 24 <sup>th</sup> September
<b>Championship 2/8</b>	Sunday 8 <sup>th</sup> October
<b>Championship 3/8</b>	Sunday 22 <sup>nd</sup> October
<b>Championship 4/8</b>	Sunday 5 <sup>th</sup> November
<b>Sprints 2/9</b>	Sunday 12 <sup>th</sup> November
<b>Sprints 3/9</b>	Sunday 26 <sup>th</sup> November
<b>Championship 5/8</b>	Sunday 3 <sup>rd</sup> December
<b>Championship 6/8</b>	Sunday 14 <sup>th</sup> January
<b>Sprints 4/9</b>	Sunday 21 <sup>st</sup> January
<b>Sprints 5/9</b>	Sunday 4 <sup>th</sup> February
<b>Sprints 6/9</b>	Sunday 18 <sup>th</sup> February
<b>Sprints 7/9</b>	Sunday 3 <sup>rd</sup> March
<b>Sprints 8/9</b>	Sunday 17 <sup>th</sup> March
<b>Championship 7/8</b>	Sunday 7 <sup>th</sup> April
<b>Sprints 9/9</b>	Sunday 14 <sup>th</sup> April
<b>Championship 8/8</b>	Sunday 21 <sup>st</sup> April



Additional SYC SPECIAL EVENTS Available	
Event / Regatta Name	Date
TK ROBERTSON TROPHY RACE	Sunday 23 <sup>rd</sup> July
SAIL PAST & BLESSING THE FLEET	Saturday 9 <sup>th</sup> September
BREAKING OF THE FLAG CEREMONY & DASH 4 CA\$H	Sunday 10 <sup>th</sup> September
COCK OF THE BROADWATER	Sunday 17 <sup>th</sup> December
DINGHY MARATHON TROPHY RACE	Sunday 10 <sup>th</sup> March
DUX BIRTHDAY CELEBRATIONS	Sunday 24 <sup>th</sup> March

OFF THE BEACH DINGHY SERIES FEES	
<b>WHOLE SEASON Discount (24 Races)</b> (Includes Championship, Sprint & Polar Bear)	<b>\$215.00</b>
<b>CHAMPIONSHIP SERIES (9 Races)</b>	<b>\$105.00</b>
<b>SPRINT SERIES (6 Races)</b>	<b>\$70.00</b>
<b>POLAR BEAR SERIES (9 Races)</b>	<b>\$105.00</b>
<b>Casual Race Entry</b> (per race day)	<b>\$20.00 SYC Member</b> <b>\$30.00 Non SYC Member (max entry 3)</b>



## SAILING COMMITTEE DIVISIONAL REPRESENTATIVES:

### SYC Vice Commodore of Sail:

Glenn Burrell                      0411 422 232                      [glenn@aquaticelements.com.au](mailto:glenn@aquaticelements.com.au)

### SYC Sailing Operations Manager:

Simon Turpin                      0400 558 917                      [sailing.ops@sycgc.com.au](mailto:sailing.ops@sycgc.com.au)

### OD - Offshore Division Representative:

Barry Berg                      0400 110 555                      [barry.wildstyle@gmail.com](mailto:barry.wildstyle@gmail.com)

### TT – Thursday Twilight Division Representative:

Peter Karlovic                      0400 391 561                      [sailorpk@outlook.com](mailto:sailorpk@outlook.com)

### ID – Inshore Division Representative:

Wayne Kirby                      0418 950 250                      [wayne@kirbyfamily.id.au](mailto:wayne@kirbyfamily.id.au)

### OTBC – Off the Beach Catamaran Division Representative:

David Chester                      0431 316 574                      [david\\_chester202@hotmail.com](mailto:david_chester202@hotmail.com)

### OTBD – Off the Beach Dinghy Division Representative:

Stuart Waters                      0400 155 600                      [stuartwaters@live.com.au](mailto:stuartwaters@live.com.au)

### HC – Handicap Committee Representatives:

Russell Birse, Ian Ball, Colin Metcher.                      [sailing.reception@sycgc.com.au](mailto:sailing.reception@sycgc.com.au)



## TABLE OF CONTENTS

1. RULES.....	6
2. ELIGIBILITY & ENTRY .....	6
3. CHANGES TO SAILING INSTRUCTIONS .....	6
4. SAILING MADE ASHORE.....	6
5. SCHEDULE OF RACES .....	7
6. CLASS FLAGS .....	7
7. RACING AREA.....	8
8. THE COURSES.....	8
9. MARKS .....	8
10. AREAS THAT ARE OBSTRUCTIONS: .....	8
11. THE START/S – CHAMPIONSHIP SERIES.....	8
12. CHANGE OF THE NEXT LEG OF THE COURSE .....	9
13. THE FINISH .....	9
14. PENALTY SYSTEM.....	9
15. TARGET TIME AND TIME LIMITS.....	10
16. PROTESTS AND REQUESTS FOR REDRESS.....	10
17. SCORING & RESULTS.....	11
18. SAFETY REGULATIONS .....	12
19. REPLACEMENT OF CREW OR EQUIPMENT .....	12
20. EQUIPMENT AND MEASUREMENT CHECKS .....	12
21. ADVERTISING .....	12
22. OFFICIAL BOATS.....	12
23. SUPPORT BOATS .....	12
24. RUBBISH DISPOSAL .....	13
25. HAUL OUT RESTRICTION.....	<b>Error! Bookmark not defined.</b>
26. DIVING EQUIPMENT & PLASTIC POOLS .....	<b>Error! Bookmark not defined.</b>
27. RADIO COMMUNICATIONS .....	13
28. PRIZES .....	13
29. PERPETUAL TROPHIES .....	13
30. DISCLAIMER OF LIABILITY .....	13
31. INSURANCE .....	13
32. RESULTS .....	14
33. MEDIA RIGHTS .....	14
34. FURTHER INFORMATION .....	14
ATTACHMENT A - OTBD RACING AREA .....	15
ATTACHMENT B - OTB DINGHY COURSE DIAGRAMS .....	16
ATTACHMENT C – OTB DINGHY COURSES & MARK DESCRIPTION .....	17



## 1. RULES

- 1.1 The races will be governed by the current rules as defined in the Racing Rules of Sailing (RRS) and the Prescriptions of Australian Sailing (AS).
- 1.2 The Special Regulations of AS: Part 2 – Off the Beach Boats.
- 1.3 The relevant Class Rules (as applicable), except as any of these are altered by the Sailing Instructions.
- 1.4 The *International Regulations for the Prevention of Collisions at Sea 1972* (COLREGS) shall apply at all times. The *Racing Rules of Sailing* (RRS) will apply only between those ships that are participating in the event, for the duration of the event. Should interaction occur with non-participating ships, then COLREGS shall apply to all ships and shall over-ride all other rules. This is a condition imposed by Gold Coast Waterways Authority within our Aquatic Event Authority.
- 1.5 RRS Appendix T – Arbitration applies.
- 1.6 Compliance with SYC's Sailing Season Policy.
- 1.7 All competitors are reminded of RRS 1.1 Helping Those in Danger; A boat or competitor shall give all possible help to any person or vessel in danger.

## 2. ELIGIBILITY & ENTRY

- 2.1 A minimum of five (5) Series entries at the first race of the series are required to constitute a Division. Classes not meeting this requirement will be allocated into the "Open Division" based on their relevant AS Yardstick.
- 2.2 There is no Green Fleet Division in the Championship Series however competent Sailors may enter the Junior Division.

## 3. CHANGES TO SAILING INSTRUCTIONS

- 3.1 Changes to Sailing Instructions will be posted on the official Notice Board not less than sixty (60) minutes before the scheduled start time of the first race of the day, except that any change to the schedule of races will be posted by 1800 hours on the day before it will take effect.

## 4. SAILING MADE ASHORE

- 4.1 Signals made ashore will be displayed on the official flag located on the SYC Hollywell Race Control Tower.
- 4.2 When flag AP is displayed ashore, '1 minute' is replaced with 'not less than 30 minutes' in the race signal AP.
- 4.3 When a visual signal is displayed over a course flag or class flag, it applies to that course area/class only.



## 5. SCHEDULE OF RACES

- 5.1 A Compulsory Skippers Briefing will be held at the Official Notice Board each day of racing at 1200hrs for the Championship Series, Sprint Series & Polar Bear Series.
- 5.2 The schedule of race days is in accordance with the OTB Dinghy Series Schedule listed at the beginning of these Sailing Instructions.
- 5.3 A minimum of five (5) Competitors from any Division are required to Start for a Race. If there are less than the required amount, the race will be abandoned (ABN).
- 5.4 For the Championship Series the warning signal will be given 5 minutes prior to the start signal.
- 5.5 For the Sprint & Polar Bear Series the warning signal will be given 3 minutes prior to the start signal. The first warning signal for racing covered by these Sailing Instructions shall be considered to be “not before”.

EVENT	Warning Signal (Not .Before)
Championship Series	1255 hours
Sprint Series	1257 hours
Polar Bear Series	1257 hours

- 5.6 For the Championship, Polar Bear, there will be a maximum of three (3) races per day. For the Sprint Series there will be a maximum of four (4) races per day.
- 5.7 No races will be started after 1530 hours for Championship, Sprint & Polar Bear Series.

## 6. CLASS FLAGS

- 6.1 Table

DIVISION	CLASS FLAG
Laser (Including Radial & 4.7)	White with red class insignia
OK Dinghy	White with black class insignia
Sabot	White with black class insignia
Optimist	White with black class insignia
Open Bic	White with black and orange class insignia
Green Fleet	Green Flag
Open A (At the discretion of the race committee)	Code Flag E
Open B (At the discretion of the race committee)	Code Flag K
Open Junior (Yardstick > 153)	Code Flag J





## 7. RACING AREA

- 7.1 ATTACHMENT A – OTB Dinghy Racing Area shows the approximate location of the allocated racing area.
- 7.2 Championship Race Days may be raced in the area known as the “Deep Hole” or “Sovereign Hole”.
- 7.3 The Race Area will be confirmed by the Race Committee and announced at the Compulsory Skippers Briefing on race days.

## 8. THE COURSES

- 8.1 The diagrams in ATTACHMENT B - OTB DINGHY COURSE DIAGRAMS shows the courses to be sailed for the Championship & Sprint Series’, including the order in which marks are to be passed, and the side on which each mark is to be left.

## 9. MARKS

- 9.1 All boats shall maintain a minimum distance of 3 metres from all IALA system beacons.
- 9.2 Marks, including start and finish marks, are shown and described in ATTACHMENT C.

## 10. AREAS THAT ARE OBSTRUCTIONS:

- 10.1 The following areas are designated as obstructions:
  - 10.1.1 Areas outside of the intended channel(s) defined by the IALA system beacons north of and including Q (9)15s (Crab Island West Cardinal) are considered an obstruction. For the purposes of this definition, it shall be considered that a competitor has remained clear of the obstruction provided they have left all IALA beacons to their required side. Competitors may refer to the MSQ Boating Maps located at <http://www.msq.qld.gov.au/Boating-maps/Gold-Coast-guides> should they require any clarification.
  - 10.1.2 The finish line is an obstruction, unless finishing. Boats crossing the finish line incorrectly will be scored Did Not Finish (DNF) without a hearing. This changes rules 35, A4 and A5.

## 11. THE START/S – CHAMPIONSHIP SERIES

- 11.1 Races will be started in accordance with RRS Rule 26. Boats whose warning signal has not been made shall avoid the starting area.
  - 11.1.1 The starting line will be between a staff displaying an orange flag on the start vessel at the starboard-end and the course side of the port-end starting mark.
  - 11.1.2 Divisions may be combined at the Race Committee’s discretion should there be less than 5 Competitors in a Division.
  - 11.1.3 Divisions may be combined at the Race Officers discretion should there be less than 5 Competitors after the first race of the day.
  - 11.1.4 Boats whose warning signal has not been made shall avoid the starting area during the starting sequence for other classes.
  - 11.1.5 A boat starting later than four (4) minutes after her starting signal will be scored Did Not Start (DNS) without a hearing. This changes rule 35 A4 and A5.





## THE START/S – SPRINT & POLAR BEAR SERIES

11.2 Races will be started using a modified ISAF start sequence, as follows:

Minutes before Starting Signal	Visual Signal	Sound Signal	Event
3	Division Flag	One	Warning Signal
2	Preparatory Flag	One	Preparatory Signal
1	Preparatory Flag removed	One Long	One Minute
0	Division Flag removed	One	Starting Signal

11.2.1 The starting line will be between a staff displaying an orange flag on the Race Control Tower or starting vessel and the course side of the starting mark.

11.2.2 Boats whose warning signal has not been made shall avoid the starting area during the starting sequence for other classes.

11.2.3 A boat starting later than two (2) minutes after her starting signal will be scored Did Not Start (DNS) without a hearing. This changes rule A4.

## 12. CHANGE OF THE NEXT LEG OF THE COURSE

12.1 To change the next leg of the course, the race committee will lay a new mark (or move the finishing line) and remove the original mark as soon as practicable. When in a subsequent change a new mark is replaced, it will be replaced by an original mark.

## 13. THE FINISH

13.1 The finishing line may be between a staff displaying a blue flag on the finishing boat and the course side of the finishing mark or

13.2 Where the SYC Race Control Tower is used, the finishing line will be between a staff displaying a blue flag on the Race Control Tower and the course side of the finishing mark.

13.3 The direction and position of the finish can vary depending on the course used and will be confirmed at the Compulsory Skippers Briefing.

## 14. PENALTY SYSTEM

14.1 Rule 44.1 is changed so that the Two-Turns Penalty is replaced by a One-Turn Penalty, including one tack and one gybe in the same direction.



## 15. TARGET TIME AND TIME LIMITS

SERIES NAME	TARGET TIME (minutes)	TIME LIMIT (minutes)
Championship	50	20
Sprint	30	10
Polar Bear	30	10

- 15.1 Boats failing to finish within the above Time Limits after the first boat sails the course and finishes will be scored Did Not Finish (DNF) without a hearing. This changes rules 35, A4 & A5.

## 16. PROTESTS AND REQUESTS FOR REDRESS

- 16.1 Immediately after finishing a boat intending to protest shall, in addition to the requirements of RRS 61.1(a), inform the Race Officer at the finish line of her intention to protest and the identity of the boat(s) being protested. The protesting boat must receive an acknowledgement from the Race Officer. This changes RRS 61.
- 16.2 RRS Appendix T- ARBITRATION applies to all Divisions for SYC Club Racing and all SYC Special Events:
- 16.2.1 A short mediation hearing will be conducted for all protests lodged in accordance with RRS 61 which allege an infringement of a rule of Part 2 or 4. Such hearing will be held as soon as possible after racing.
- 16.2.2 The time and place of the mediation hearing will be decided by the mediator and such advice may be given verbally.
- 16.2.3 One representative of each boat shall attend the mediation hearing and no witnesses shall be allowed. The mediator shall decide the manner in which testimony is given.
- 16.2.4 After taking testimony at a mediation hearing the mediator shall make one of the following conclusions:
- (a) The protest does not comply with RRS 61 and the protestor may withdraw the protest. This changes RRS 63.1.
- (b) The matter should proceed to a protest hearing. (This may be because rules other than Part 2 or 4 are or may be involved, or because evidence is too complex or divergent to reach a reasonable and timely conclusion, or due to the apparent severity of the alleged infringement, or for any other reason decided by the mediator.)
- (c) No rule was broken and the protestor may withdraw the protest. This changes RRS 63.1
- (d) A rule was broken by one or more of the boats involved and all parties to the mediation agree, the infringing boat(s) may accept a 30% scoring penalty, and if so accepted the protestor shall withdraw the protest. **All other boat scores will remain the same.**
- 16.2.5 If the parties do not agree, the protest shall proceed to a hearing. This changes RRS 63.1



- 16.2.6 A mediation hearing shall not be re-opened. No conclusion of a mediator shall be subject to appeal or be grounds for redress. Should the protest proceed to a protest hearing then the mediator may be a member of the protest committee. Any evidence given by a mediator during a protest hearing shall be given only in the presence of the parties to the hearing.
- 16.3 Protest forms are available at the Sailing Office. Protests shall be delivered there within the Protest Time Limit.
- 16.4 The Protest Time Limit is thirty (30) minutes for all Series, after the last boat has finished in its division. The same protest time limit applies to all protests by the Race Committee and any Requests for Redress. This changes Rules 61.3 and 62.2.
- 16.5 Notices will be posted according to the Sailing Season Policy.
- 16.6 Decisions by the Race Committee or Protest Committee will be emailed to parties to the hearing under Rule 65.1.

## 17. SCORING & RESULTS

- 17.1 The low points scoring system of RRS Appendix A9 will apply.
- 17.2 For a Boat that Did not Finish (DNF) they shall be scored the number of boats that have signed on for the Race Day plus 1 point. This Changes RRS Appendix A4.2
- 17.3 For a boat that Did not Start (DNS) they shall be scored the number of boats that have signed on for the Race Day plus 2 points. This Changes RRS Appendix A4.2
- 17.4 For a boat that Did not Compete (DNC) they shall be scored the number of boats that have signed on for the Race Day plus 3 points. This Changes RRS Appendix A4.2
- 17.5 Three (3) races are required to constitute a series. When fewer than five (5) races have been completed, all scores shall count.
- 17.6 When five (5) to eight (8) races have been completed a boat's series score will be the total of her race scores excluding her worst score.
- 17.7 When nine (9) to twelve (12) races have been completed a boat's series score will be the total of her race scores excluding her two (2) worst scores.
- 17.8 When thirteen (13) to sixteen (16) races have been completed a boat's series score will be the total of her race scores excluding her three (3) worst scores
- 17.9 When thirteen (17) to twenty-five (25) races have been completed a boat's series score will be the total of her race scores excluding her four (4) worst scores
- 17.10 When thirteen (26) to forty (50) races have been completed a boat's series score will be the total of her race scores excluding her five (5) worst scores.
- 17.11 Australian Sailing Yardsticks (ASY) will be used in calculating results for mixed classes/divisions for Championship, Sprint, and Polar Bear Series.
- 17.12 Boats without an AS Yardstick number will be allocated an estimated trial number. The estimated trial number shall not be subject to protest or constitute grounds for redress. This amends RRS60.1 and 62



## 18. SAFETY REGULATIONS

- 18.1 A boat that retires from a race shall notify the race committee as soon as possible.
- 18.2 Sign on and Sign off requirements are:
  - 18.2.1 All helmspersons shall sign on, on the sheets provided, prior to going afloat for racing.
  - 18.2.2 All helmspersons shall sign off within forty-five (45) minutes of completing racing for that session, or later at the discretion of the Race Committee.
- 18.3 Boats failing to comply with any of these Safety Regulations will be scored ENP (Event Nominated Penalty). The penalty shall be 20% of the score for Did Not Finish, rounded to the nearest whole number (0.5 rounded upward). This changes RRS A4.
- 18.4 All Competitors are encouraged to carry a Harness Rescue Tool or similar device that is readily accessible in an emergency.

## 19. REPLACEMENT OF CREW OR EQUIPMENT

- 19.1 Substitution of damaged or lost equipment will not be allowed unless authorized by the Race Committee. Requests for substitution shall be made to the Race Committee at the first reasonable opportunity.

## 20. EQUIPMENT AND MEASUREMENT CHECKS

- 20.1 A boat or equipment may be inspected at any time for compliance with the class rules and sailing instructions. On the water, a boat can be instructed by a race committee equipment inspector or measurer to proceed immediately to a designated area for inspection.

## 21. ADVERTISING

- 21.1 Boats shall display advertising supplied by the organising authority for its approved Series Sponsors as required and instructed from time to time.

## 22. OFFICIAL BOATS

- 22.1 Official boats will be marked with the SYC Burgee.
- 22.2 An SYC Sailing Instructor may provide advice to any competitor during club racing but not in the Championship Series. The assistance provided will not be grounds for a protest by a boat. This changes RRS Rule 41 and RRS Rule 60.1

## 23. SUPPORT BOATS

- 23.1 Team leaders, coaches and other support personnel shall stay no less than one hundred (100) metres outside areas where boats are racing from the time of the preparatory signal for the first class to start until all boats have finished or retired or the race committee signals a postponement, general recall or abandonment.
- 23.2 No disturbing wash is to be created near a competitor on the race course.



## 24. RUBBISH DISPOSAL

- 24.1 Boats shall not put trash in the water. Rubbish may be placed aboard support and race committee boats.

## 25. RADIO COMMUNICATIONS

- 27.1 Except in an emergency, a boat shall neither make radio transmissions while racing nor receive radio communications not available to all boats. This restriction also applies to mobile telephones.
- 27.2 Boats competing may be required to use a suitable mobile phone (Android/Apple) to operate the App "RaceQS" for tracking and relay purposes. Further details on using RaceQS can be downloaded from [www.raceqs.com](http://www.raceqs.com)

## 26. PRIZES

- 28.1 RACE DAY PRIZES FOR CHAMPIONSHIP, SPRINT & POLAR BEAR SERIES
- 28.2 A presentation of results will be held after each day of racing at the earliest possible convenience.
- 28.3 Six (6) daily prizes are awarded randomly from the sign-on sheet including the volunteers for the day.
- 28.4 The Skipper or a crew member of the boat or volunteer must be present at the Daily Race Prize Presentations to receive prizes or the prize will be redrawn and re-awarded.

## 27. PERPETUAL TROPHIES

- 29.1 The Sailing Presentation for Club Championships and other Off The Beach Dinghy Series and events will take place at a Clubhouse of SYC.
- 29.2 Other prizes may be awarded at the discretion of the Organising Authority.

## 28. DISCLAIMER OF LIABILITY

- 30.1 All those taking part in races conducted by Southport Yacht Club do so at their own risk and responsibility.
- 30.2 The Southport Yacht Club, any sponsor and any party involved in the organisation of any event disclaims any and every responsibility for any loss, damage, injury to persons and/or things, both ashore and at sea, as a consequence of participation in any way in the races covered by these sailing instructions.
- 30.3 Attention is drawn to RRS 3 which states: "The responsibility for a boat's decision to participate in a race or to continue racing is hers alone."

## 29. INSURANCE

- 30.1 Each participating boat shall be insured with valid third-party liability insurance, with a minimum cover of \$20M (AUD) for any one incident. By taking part in a race all boat owners are deemed to have made a declaration that they have such cover.



### 30. RESULTS

- 32.1 Results will be posted on the Southport Yacht Club's website on the Off The Beach Dinghy Division page and may be posted on the official notice board outside the Sailing Office.

### 31. MEDIA RIGHTS

- 33.1 In participating in the Off the Beach Dinghy Division Club Racing, a competitor grants to the Organising Authority and the sponsors, the right in perpetuity, to make, reproduce, edit, use and show, from time to time and at their discretion, any motion pictures, still pictures and live, taped or film television and other reproductions of him/ her taken during the Sailing Season and to use his / her likeness, voice, name and any other information in any material related without compensation.

### 32. FURTHER INFORMATION

- 34.1 Should you require any further information, please do not hesitate to contact:

**OTBD – Off The Beach Dinghy Division:**

Southport Yacht Club Inc.

1 Marina Crescent, HOLLYWELL QLD 4216.

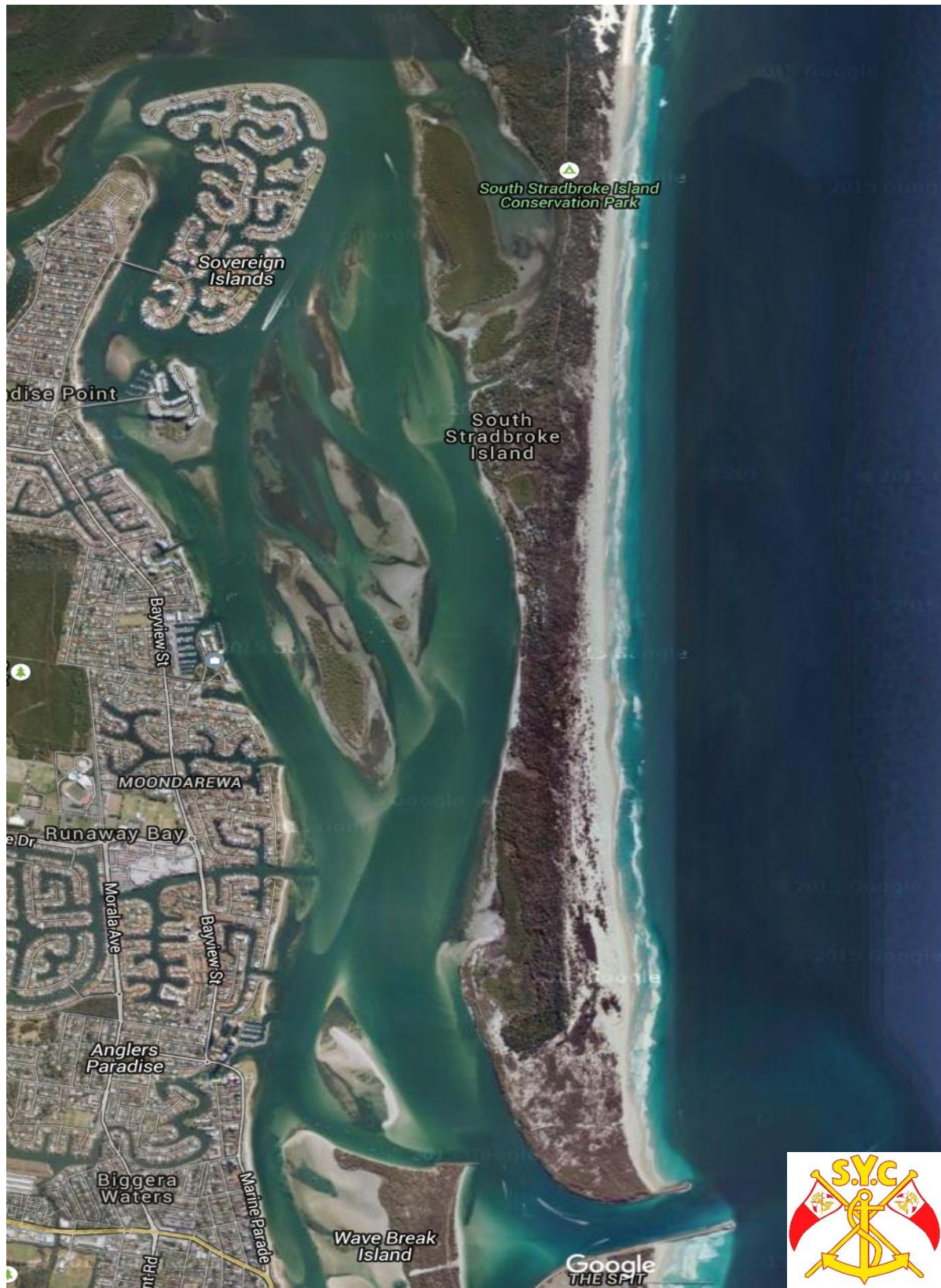
Phone: (07) 5537 7030

Email: [sailing.reception@sycgc.com.au](mailto:sailing.reception@sycgc.com.au)





## ATTACHMENT A - OTBD RACING AREA

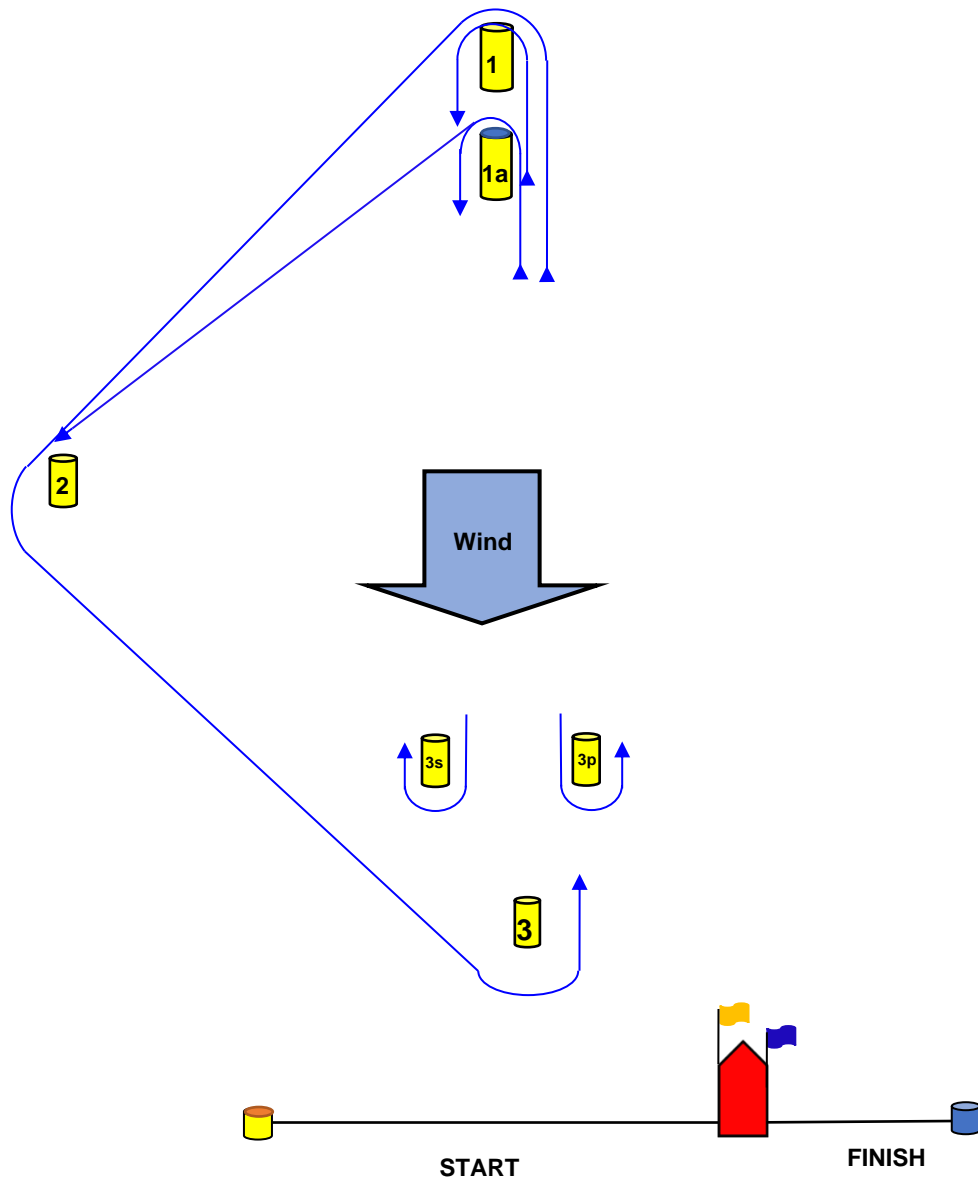






## ATTACHMENT B - OTB DINGHY COURSE DIAGRAMS

### WINDWARD/LEEWARD & TRIANGULAR COURSE



**NB:** The SYC Pontoon may be used as a substitute for either the start/finish mark(s) or boat. The start/finish line will be described in detail at the Compulsory Skippers briefing. Gates (3s/3p) may be substituted at mark 3.



## ATTACHMENT C – OTB DINCHY COURSES & MARK DESCRIPTION

COURSE	WINDWARD/LEEWARD & TRIANGLE MARK ROUNDINGS	TYPE
<b>W1</b>	START – 1 - FINISH	W/L
<b>W2</b>	START – 1 - 3s/3p – 1 - FINISH	W/L
<b>W3</b>	START – 1 – 3s/3p – 1 – 3s/3p – 1 - FINISH	W/L
<b>W1A</b>	START – 1a – FINISH	W/L
<b>W2A</b>	START – 1a - 3s/3p – 1a - FINISH	W/L
<b>W3A</b>	START – 1a – 3s/3p – 1a – 3s/3p – 1a - FINISH	W/L
<b>T1</b>	START – 1 – 2 – FINISH	TRI
<b>T2</b>	START – 1 – 2 – 3s/3p – 1 - FINISH	TRI
<b>T3</b>	START – 1 – 2 – 3s/3p – 1 – 3s/3p – 1 – 2 - FINISH	TRI
<b>T1A</b>	START – 1a – 2 – FINISH	TRI
<b>T2A</b>	START – 1a – 2 – 3s/3p – 1a – FINISH	TRI
<b>T3A</b>	START – 1a – 2 – 3s/3p – 1a – 3s/3p – 1a – 2 – FINISH	TRI
<b>TBA</b>	As described at the Compulsory Skippers Briefing	

BUOY	DESCRIPTION
<b>START   FINISH</b>	Start = Yellow with Orange Top / Finish = Blue Buoy
<b>1   2   3   3s/3p</b>	Yellow inflatable cylinder
<b>1a</b>	Yellow inflatable cylinder with Blue Top
<b>Barging Buoy</b>	Pink teardrop