



2023/24 Sailing Season

THURSDAY TWILIGHT DIVISION

OFFSHORE SERIES

SAILING INSTRUCTIONS





TT THURSDAY TWILIGHT OFFSHORE DIVISON

Schedule May 2023-April 2024

Winter 1/14	Thursday 4 th May
Winter 2/14	Thursday 11 th May
Winter 3/14	Thursday 18 th May
Winter 4/14	Thursday 25 th May
Winter 5/14	Thursday 1 st June
Winter 6/14	Thursday 8 th June
Winter 7/14	Thursday 15 th June
Winter 8/14	Thursday 22 nd June
Winter 9/14	Thursday 29 th June
Winter 10/14	Thursday 6 th July
Winter 11/14	Thursday 13 th July
Winter 12/14	Thursday 20 th July
Winter 13/14	Thursday 27 th July
Winter 14/14	Thursday 10 th August
Spring 1/14	Thursday 14 th September
Spring 2/14	Thursday 21 st September
Spring 3/14	Thursday 28 th September
Spring 4/14	Thursday 5 th October
Spring 5/14	Thursday 12 th October
Spring 6/14	Thursday 19 th October
Spring 7/14	Thursday 26 th October
Spring 8/14	Thursday 2 nd November
Spring 9/14	Thursday 9 th November
Spring 10/14	Thursday 16 th November
Spring 11/14	Thursday 23 rd November
Spring 12/14	Thursday 30 th November
Spring 13/14	Thursday 7 th December
Spring 14/14	Thursday 14 th December
Summer 1/14	Thursday 18 th January
Summer 2/14	Thursday 25 th January
Summer 3/14	Thursday 1 st February
Summer 4/14	Thursday 8 th February
Summer 5/14	Thursday 15 th February
Summer 6/14	Thursday 22 nd February
Summer 7/14	Thursday 29 th February
Summer 8/14	Thursday 7 th March
Summer 9/14	Thursday 14 th March
Summer 10/14	Thursday 21 st March
Summer 11/14	Thursday 28 th March
Summer 12/14	Thursday 4 th April
Summer 13/14	Thursday 11 th April
Summer 14/14	Thursday 18 th April



ADDITIONAL SYC SPECIAL EVENTS AVAILABLE

Event / Regatta Name	Date	A.S. S.R. Safety Category
FLAT ROCK YACHT RACE	Saturday 24 th June 2023	Category 3
SAIL PAST & BLESSING THE FLEET	Saturday 9 th September 2023	NA
SAIL PARADISE REGATTA	Saturday 30 th September to Monday 2 nd October 2023	Category 6
BURLEIGH BASH	Sunday 29 th October 2023	NA
TED ELKES MEMORIAL REGATTA	Saturday 18 th and Sunday 19 th November 2023	Category 6
COOK ISLAND YACHT RACE	Sunday 10 th December 2023	Category 4
JULIAN ROCKS YACHT RACE	Saturday 13 th and Sunday 14 th January 2024	Category 3 +PLB's
DUX BIRTHDAY CELEBRATIONS	Sunday 24 th March 2023	NA

THURSDAY TWILIGHT OFFSHORE DIVISION SERIES FEES

BLOCK WHOLE SEASON DISCOUNT (42 Races)	\$350.00
SUMMER TWILIGHT SERIES (14 Races)	\$145.00
WINTER TWILIGHT SERIES (14 Races)	\$145.00
SPRING TWILIGHT SERIES (14 Races)	\$145.00
Casual Race Entry (per race day)	\$20.00 SYC Member \$30.00 Non SYC Member (max entry 3)



SAILING COMMITTEE DIVISIONAL REPRESENTATIVES:

SYC Vice Commodore of Sail:

Glenn Burrell 0411 422 232 glenn@aquaticelements.com.au

SYC Sailing Operations Manager:

Simon Turpin 0400 558 917 sailing.ops@sycgc.com.au

OD - Offshore Division Representative:

Barry Berg 0400 110 555 barry.wildstyle@gmail.com

TT – Thursday Twilight Division Representative:

Peter Karlovic 0400 391 561 sailorpk@outlook.com

ID – Inshore Division Representative:

Wayne Kirby 0418 950 250 wayne@kirbyfamily.id.au

OTBC – Off the Beach Catamaran Division Representative:

David Chester 0431 316 574 david_chester202@hotmail.com

OTBD – Off the Beach Dinghy Division Representative:

Stuart Waters 0400 155 600 stuartwaters@live.com.au

HC – Handicap Committee Representatives:

Russell Birse, Ian Ball, Colin Metcher sailing.reception@sycgc.com.au



TABLE OF CONTENTS

INVITATION.....	6
1. RULES.....	6
2. ELIGIBILITY	7
3. COMMUNICATION.....	7
4. CHANGES TO SAILING INSTRUCTIONS.....	7
5. SIGNALS MADE ASHORE	7
6. SCHEDULE OF RACES	7
7. SAIL RESTRICTIONS	7
8. RACING AREA.....	8
9. THE COURSES.....	8
10. MARKS	8
11. OBSTRUCTIONS & PROHIBITED AREAS.....	9
13. THE START.....	9
14. CHANGE OF THE NEXT LEG OF THE COURSE	9
15. SHORTENED COURSE	10
16. THE FINISH	10
17. PENALTY SYSTEM & PENALTIES.....	10
18. TIME LIMIT.....	10
19. PROTESTS.....	11
20. SCORING	11
21. SAFETY REGULATIONS	12
22. REPLACEMENT OF CREW OR EQUIPMENT	12
23. EQUIPMENT AND MEASUREMENT CHECKS	13
24. OFFICIAL BOATS.....	13
25. SUPPORT TEAMS	13
26. RUBBISH DISPOSAL.....	13
27. PRIZES	13
28. PERPETUAL PRIZES.....	13
29. DISCLAIMER OF LIABILITY	13
30. INSURANCE	14
31. MEDIA RIGHTS.....	14
32. FURTHER INFORMATION	14
ATTACHMENT A - SYC TWILIGHT OFFSHORE RACING AREA	15
ATTACHMENT B - SYC TWILIGHT OFFSHORE MARKS & COURSES.....	16
ATTACHMENT C - SYC OFFSHORE SERIES – INSHORE TWILIGHT MARKS.....	17
ATTACHMENT D – SYC OFFSHORE SERIES – INSHORE TWILIGHT COURSES & MARK ROUNDINGS.....	18



INVITATION

Southport Yacht Club's Thursday Twilight Division Offshore Series is designed for fun and social sailing on the beautiful ocean waters of between The Spit & Burleigh Heads on the Gold Coast. Combining this with spectacular sunsets, magnificent scenery and friendly healthy competition, provides an unforgettable experience that will be thoroughly enjoyed and shared by all.

1. RULES

- 1.1 The Organising Authority (OA) is Southport Yacht Club Inc. (SYC)
- 1.2 Races will be governed by the current rules as defined in the Racing Rules of Sailing (RRS) and the Prescriptions of Australian Sailing (AS).
- 1.3 A minimum of two (2) boats are required to constitute a race. If there are less than the required amount the race shall be abandoned.
- 1.4 All boats shall comply with AS Special Regulations (SR): Part 1 – Category 4
- 1.5 All boats shall supply at time of entry a current AS SR Equipment Audit Form Category 4 (or higher) that has been certified by an approved AS Club / National Equipment Auditor. AS SR Equipment Audit forms are available from the OA website.
- 1.6 All boats shall comply with the Transport Operations (Marine Safety) Act 1994 and Regulation. In the event of a reportable Marine Incident the SYC Sailing Officer is to be notified as soon as practical; but no later than 1 hour after the last boat has finished, a copy of the MSQ Marine Incident Report is required to be lodged with the OA at the same time it is lodged with Maritime Safety Queensland.
- 1.7 The *International Regulations for the Prevention of Collisions at Sea 1972* (COLREGS) shall apply at all times. The *Racing Rules of Sailing* (RRS) will apply only between those ships that are participating in the event, for the duration of the event. Should interaction occur with non-participating ships, then COLREGS shall apply to all ships and shall over-ride all other rules. This is a condition governed by local Statutory Authorities for the OA's approved Aquatic Event Permit.
- 1.8 RRS Appendix T – Arbitration applies.
- 1.9 Compliance with SYC's current Sailing Season Policy.
- 1.10 All competitors are reminded of RRS 1.1 Helping Those in Danger; A boat or competitor shall give all possible help to any person or vessel in danger.
- 1.11 RRS Appendix WP – Rules for Racing Around Waypoints applies when a fixed buoy has not been set and enables racing using waypoints as turning or passing points in a course.



2. ELIGIBILITY

- 2.1 Thursday Twilight Division (TT) Offshore Series races are open to all Monohull and Multihull Yachts (both trailable and fixed keel) on the register of a yacht or sailing club affiliated with AS.
- 2.2 Off the Beach classes are not permitted.

3. COMMUNICATION

- 3.1 On the water, the Race Committee intends to monitor and communicate with competitors on VHF10 radio channel.

4. CHANGES TO SAILING INSTRUCTIONS

- 4.1 Changes to Sailing Instructions (SI) will be emailed to competitors on the TT Distribution List and posted on the OA's website on the Official Noticeboard and the TT page not less than sixty (60) minutes before the scheduled start time.

5. SIGNALS MADE ASHORE

- 5.1 Signals made ashore will be displayed on the official flagpole located adjacent to the SYC Main Beach Club house on the Quarter Deck.
- 5.2 When flag AP is displayed ashore, "1 minute" is replaced with "not less than 60 minutes" in the face signal AP.

6. SCHEDULE OF RACES

- 6.1 The schedule of races is in accordance with the listed schedule at the beginning of these SI.

7. SAIL RESTRICTIONS

- 7.1 The difference between a headsail and a spinnaker is that the width of a headsail, measured between the midpoints of its luff and leech, is less than 75% of the length of its foot.
- 7.2 The use of a Gennaker, Blooper, Spinnaker, Code Zero or any other purpose-built downwind sail is prohibited.
- 7.3 The headsail must be fully hanked, or attached by means of a luff groove device, to the forestay.
- 7.4 Spinnaker poles and/or whisker poles are allowed for poling out headsails.
- 7.5 Boats shall use only one mainsail throughout the Race but may change their headsail throughout the Race.
- 7.6 Substitution of damaged or lost equipment will not be allowed unless authorized by the Race Committee. Requests for substitution shall be made to the Sailing Office at the first reasonable opportunity.



8. RACING AREA

8.1 Attachment A – SYC TWILIGHT OFFSHORE RACING AREA shows the approximate location of the allocated racing area.

8.2 Attachment C – SYC Twilight Offshore Series Inshore Racing Area

9. THE COURSES

9.1 All **Offshore** courses for the season are identified in Attachment B – SYC TWILIGHT OFFSHORE MARKS & COURSES, including the order in which the marks are to be passed and the side on which each mark is to be passed.

9.1.1 All **Inshore** courses for the season are identified in Attachment D, including the order in which the marks are to be passed and the side on which each mark is to be passed.

9.2 The Course to be sailed will be indicated by the Course Number numeral Pennant being displayed on the Start Boat.

9.3 Your attention is drawn to SI15.2 Shortened Course.

10. MARKS

10.1 All boats shall maintain a minimum distance of 3 metres from all International Association of Marine Aids to Navigation and Lighthouse Authorities (IALA) marks*. This is a condition governed by local Statutory Authorities for the OA's approved Aquatic Event Authority. Any boats failure to comply with this minimum 3 metre distance, may jeopardise all future TT racing for all boats.

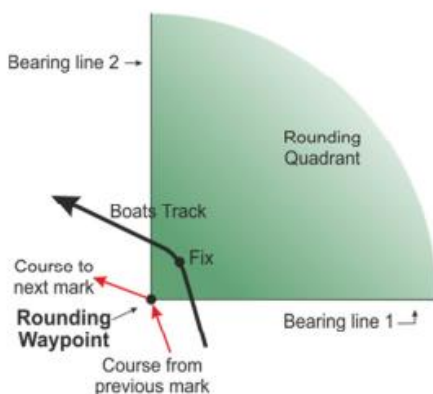
10.2 All boats shall give due consideration to the weather conditions including tidal effect (current) wind, wave & swell conditions, and their intended course when passing or rounding an IALA mark.

10.3 *Competitors may refer to the Maritime Safety Queensland Boating Maps located at <http://www.msq.qld.gov.au/Boating-maps/Gold-Coast-guides> for detailed maps.

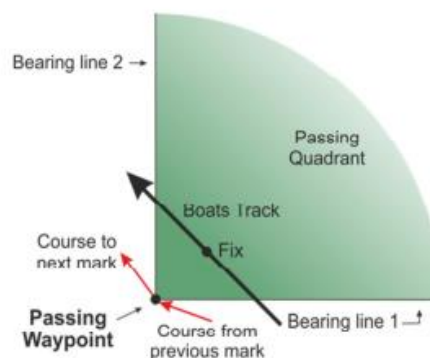
10.4 When Rounding or Passing Waypoints are used, the GPS Co-ordinates as listed in Attachment B are to be used.

10.5 Rounding or Passing Waypoint Marks have an associated rounding quadrant defined as the area enclosed between the two bearing lines (with 90 degrees between them) extending from the waypoint. A boat that provides a valid GPS fix within this quadrant is deemed to have rounded or passed the Waypoint Mark on the correct side.

Rounding Waypoint



Passing Waypoint





11. OBSTRUCTIONS & PROHIBITED AREAS

- 11.1 The finish line is an obstruction, unless finishing. Boats crossing the finish line incorrectly will be scored Did Not Finish (DNF) without a hearing. This changes RRS 35, A4 and A5.
- 11.2 All coastline "Shark Nets" are to be passed to seaward and are designated obstructions.
- 11.3 For the purposes of RRS 19 & 20, "Wonder Reef" – the Gold Coast dive attraction which is located 2.5 km east of Main Beach at approximately 27° 57.70' S, 153° 27.30' E is a continuing obstruction and a prohibited area. This area is defined with four (4) yellow IALA marker buoys.
- 11.4 A boat shall not sail into a prohibited area.

13. THE START

- 13.1 Races will be started by using RRS 26 with the warning signal made 5 minutes before the starting signal.
- 13.2 The starting line is between a staff displaying an orange flag on the start vessel at the starboard end and the course side of the port-end starting mark.
- 13.3

EVENT SERIES	STARTING SIGNAL	FLAG
Winter Series	Not before 1545hrs	Code Flag T
Spring Series	Not before 1545hrs	Code Flag T
Summer Series	Not before 1545hrs	Code Flag T

- 13.4 The starting line for Thursday Twilight Offshore Races will be in accordance with Attachment B – SYC TWILIGHT OFFSHORE MARKS & COURSES.

13.4.1 The Inshore starting line for Thursday Twilight Offshore series will be in accordance with Attachment D.

- 13.5 A boat that does not start within ten (10) minutes after her starting signal will be scored Did Not Start (DNS) without a hearing. This changes RRS A5.1 and A5.2.

14. CHANGE OF THE NEXT LEG OF THE COURSE

- 14.1 The Race Committee may change a leg of the course that begins at a rounding mark by changing the position of the next mark (or the finishing line) and signalling all boats before they begin the leg. The next mark need not be in position at that time.



15. SHORTENED COURSE

- 15.1 The Race Committee may shorten course at any part of the course. Boats shall finish between the Race Committee vessel displaying Code Flag "S" and a prominent feature of their choice (which may include any laid mark or landmark).

16. THE FINISH

- 16.1 16.1 The Offshore Finishing Line will be, as per 16.1.3 unless advised in the Skipper's Briefing Email:
- ~~15.1.1 Between a staff displaying a blue flag on the finishing boat at the starboard end and the course side of the port end finishing mark, or;~~
- ~~16.1.2 Between a staff displaying a blue flag on the finishing boat at the port end and the course side of the starboard end finishing mark, or;~~
- 16.1.3 Between the end of the Sand Bypass Jetty at the port end and the course side of the starboard-end finishing mark, approximately 800m East of the Sand Bypass Jetty (approx. co-ordinates at 27° 56.315'S | 153° 26.500'E) or;
- 16.1.4 The Inshore finish line will be as per Attachment D.
- ~~16.1.4 Between the end of the Sand Pumping Jetty at the starboard end and the course side of the port end finishing mark, or;~~
- ~~16.1.5 The imaginary line formed from the seaward end of the Sand Bypass Jetty and co-ordinates at 27° 56.315'S | 153° 26.500'E.~~
- 16.2 Yachts may be required to take their own Finish time. Finish times should be sent via SMS to the phone number advised in the Skipper's Briefing Email.
- 16.3 A boat which fails to declare its Finishing time within fifteen (15) minutes of crossing the line will be scored Did Not Finish (DNF) without a hearing. This changes RRS 35, A4 and A5.

17. PENALTY SYSTEM & PENALTIES

- 17.1 For all boats rule 44.1 is changed so that the Two-Turns Penalty is replaced by a One-Turn Penalty.
- 17.2 An infringement of any other rule or Sailing Instruction will result in a boat receiving an Event Nominated Penalty (ENP) which shall be 20% of the score for Did Not Finish, rounded to the nearest whole number (0.5 rounded upward).
- This changes RRS 29, 35, 44, A4 & A5.

18. TIME LIMIT

- 18.1 The Winter Series time limit for all boats to be finished is 1800 hours.
- 18.2 The Spring Series time limit for all boats to be finished is 1800 hours.



- 18.3 The Summer Series time limit for all boats to be finished is 1800 hours.
- 18.4 Boats failing to finish within the Time Limit will be scored Did Not Finish (DNF) without a hearing. This changes RRS 35, A3, A4 & A5.

19. PROTESTS

- 19.1 Immediately after finishing a boat intending to protest shall, in addition to the requirements of RRS 61.1(a), inform the Race Officer of her intention to protest and the identity of the boat(s) protested against. The protesting boat must receive an acknowledgement from the race committee. This changes RRS 61.
- 19.2 RRS Appendix T- ARBITRATION applies.
- 19.3 Protest forms are available at the OA's Main Beach reception, Sailing Office at Hollywell and may also be downloaded from their website. Protests shall be delivered there within the Protest Time Limit.
- 19.4 The Protest Time Limit is ninety (90) minutes after the last boat has finished the race. The also applies to all protests by the Race Committee and Protest Committee and requests for redress. This changes RRS 61.3 and 62.2.

20. SCORING

- 20.1 The low points scoring system of RRS Appendix A.
- 20.2 For a Boat that Did Not Finish (DNF) they shall be scored the number of boats that have signed on for the Race plus 1 point.
- 20.3 For a boat that Did Not Compete (DNC) they shall be scored the number of boats that have signed on for the Race plus 3 points.
- 20.4 Four (4) races are required to constitute a series. When fewer than five (5) races have been completed, all scores shall count.
- 20.5 When five (5) to eight (8) races have been completed a boat's series score will be the total of her race scores excluding her worst score.
- 20.6 When nine (9) to twelve (12) races have been completed a boat's series score will be the total of her race scores excluding her two (2) worst scores.
- 20.7 When thirteen (13) or more races have been completed a boat's series score will be the total of her race scores excluding her three (3) worst scores.
This changes RRS Appendix A5
- 20.8 A boat will receive a 1 minute time correction to its elapsed time if she takes a Sail Pass Member onboard. The Skipper must advise the OA prior to the start of the race to be valid (if a pursuit race the time of the first starter) and this time correction may only be applied to a maximum of 2 Sail Passes in a race. This changes RRS 90.3 Appendix A3.



21. SAFETY REGULATIONS

- 21.1 All boats shall always maintain a listening watch on VHF10.
- 21.2 When departing or entering the Gold Coast Seaway, the Organising Authority strongly encourages all skippers to carefully observe the prevailing conditions and wave patterns. Skippers are strongly encouraged to have all crew on deck, all hatches securely closed and to consider the need for personal flotation devices whilst crossing the Seaway.
- 21.3 All helmspersons shall “Log-On” with Gold Coast Seaway Tower on VHF73, providing the Boat Name, Sail Number, Persons-on-Board (POB), Mobile Number, Vessel Registration Number and Estimated Time of Return (ETR) **PRIOR** to departing the Gold Coast Seaway.
- 21.4 All boats shall sign on with Race Control via VHF10 at least five (5) minutes prior to their start time, confirming Boat Name, Sail # and the number of persons on board (P.O.B.).
- 21.5 A boat that retires from a race shall notify Race Control on VHF10 as soon as possible.
- 21.6 Unless in use, no part of the anchor may project forward of the bow at any time whilst racing. Anchors must be available for immediate use in the event of an emergency.
- 21.7 All helmspersons shall “Log Off” with Gold Coast Seaway Tower on VHF73 immediately upon safety returning through the Gold Coast Seaway.
- 21.8 Boats failing to comply with any of these Safety Regulations will be scored ENP (Event Nominated Penalty) without a hearing. The penalty shall be 20% of the score for Did Not Finish, rounded to the nearest whole number (0.5 rounded upward). This changes RRS 44, A3, A4 and A5.
- 21.9 Within 15 minutes of rounding or passing a Waypoint Mark, all competing yachts shall notify the Race Officer via text/mms to the number given in the SKIPPERS BRIEFING EMAIL providing:
 - a. The Yachts Name AND
 - b. Photograph of an instrument displaying the fix and time of the Rounding or Passing the Waypoint Mark within the Rounding Quadrant

22. REPLACEMENT OF CREW OR EQUIPMENT

- 22.1 Substitution of damaged or lost equipment will not be allowed unless authorized by the Race Committee. Requests for substitution shall be made to the Race Committee at the first reasonable opportunity.
- 22.2 Failing to notify the SYC Sailing Office of changes to a boats configuration or rating, may result in protest by the Race Committee. Penalties for these breaches may be less than disqualification if the Protest Committee so decides.



23. EQUIPMENT AND MEASUREMENT CHECKS

- 23.1 A boat or equipment may be inspected at any time for compliance with the class rules, notice of race and sailing instructions.
- 23.2 When instructed by a Race Official, a boat shall proceed to a designated area for inspection.

24. OFFICIAL BOATS

- 24.1 All official boats are numbered by the OA and marked with the OA Burgee.

25. SUPPORT TEAMS

- 25.1 Team leaders, coaches and other support personnel shall stay no less than one hundred (100) metres outside areas where boats are racing from the time of the preparatory signal for the first class to start until all boats have finished or retired or the race committee signals a postponement, general recall or abandonment.
- 25.2 No disturbing wash is to be created near a competitor on the racecourse.

26. RUBBISH DISPOSAL

- 26.1 Boats shall not put rubbish in the water. Rubbish may be placed aboard support and Race Committee boats.

27. PRIZES

- 27.1 A presentation of results will be held after each day of racing at the earliest possible convenience at the OA Main Beach Clubhouse.
- 27.2 Daily prizes will be awarded to 1st, 2nd and 3rd placings.
- 27.3 Other prizes may be awarded at the discretion of the OA.

28. PERPETUAL PRIZES

- 28.1 The Sailing Presentation for each Series of TT Offshore Series and the overall TT Offshore Champion will take place in the OA's Main Beach Clubhouse after each Sailing Season.
- 28.2 The Overall TT Offshore Club Champion for the Sailing Season will be determined using the combined results from the Winter, Spring and Summer twilight series.
- 28.3 The skipper/owner of the boat must be a current financial member of the OA and their yacht registered with OA

29. DISCLAIMER OF LIABILITY

- 29.1 All those taking part in races conducted by the OA do so at their own risk and responsibility.



- 29.2 The OA, any sponsor and any party involved in the organisation of any event disclaims any and every responsibility for any loss, damage, injury to persons and/or things, both ashore and at sea, as a consequence of participation in any way in the races covered by these sailing instructions.
- 29.3 Attention is drawn to RRS 3 which states: "The responsibility for a boat's decision to participate in a race or to continue racing is hers alone."

30. INSURANCE

- 30.1 Each participating boat shall be insured with valid third-party liability insurance with a minimum cover of \$10M (AUD).

31. MEDIA RIGHTS

- 31.1 In participating in the TT, a competitor grants to the OA and the sponsors, the right in perpetuity, to make, reproduce, edit, use and show, from time to time and at their discretion, any motion pictures, still pictures and live, taped or film television and other reproductions of him/ her taken during the Sailing Season and to use his / her likeness, voice, name and any other information in any material related without compensation.

32. FURTHER INFORMATION

- 32.1 Should you require further information, please do not hesitate to contact:

Thursday Twilight Division Representative

Pete Karlovic

0400 391 561

sailorpk@outlook.com

Southport Yacht Club Inc. Sailing Office

1 Marina Crescent, HOLLYWELL QLD 4216.

Phone: (07) 5537 7030 Email:

sailing@sycgc.com.au



ATTACHMENT A - SYC TWILIGHT OFFSHORE RACING AREA





ATTACHMENT B - SYC TWILIGHT OFFSHORE MARKS & COURSES

DESIGNATED MARKS	LOCATION	GPS COORDINATES	RRS Appendix WP- Quadrant between bearing lines (if used)
Start Area	Approx. 1NM East of Sand Pump Jetty	27° 56.400'S 153° 27.230'E	
Finish Line (SI 16.1.5)	Between the end of Sand Pumping Jetty and	27° 56.315'S 153° 26.500'E	
A	Surfers Mark	28° 00.135'S 153° 26.800'E	180° and 270° when heading in a Southerly direction. 0° and 270° when heading in a Northerly direction.
B	Burleigh Mark	28° 05.100'S 153° 27.800'E	180° and 270°
E	Laid Mark	As described at Briefing Email	
F1	Offshore FAD1	27° 59.33'S 153° 31.75'E	
X	Laid Clearance Buoy (If Used)	Approx. 0.8NM to windward of the Start Line	
W	Wonder Reef	27° 57.70' S, 153° 27.30' E	(Outside of the four (4) yellow IALA marker buoys)

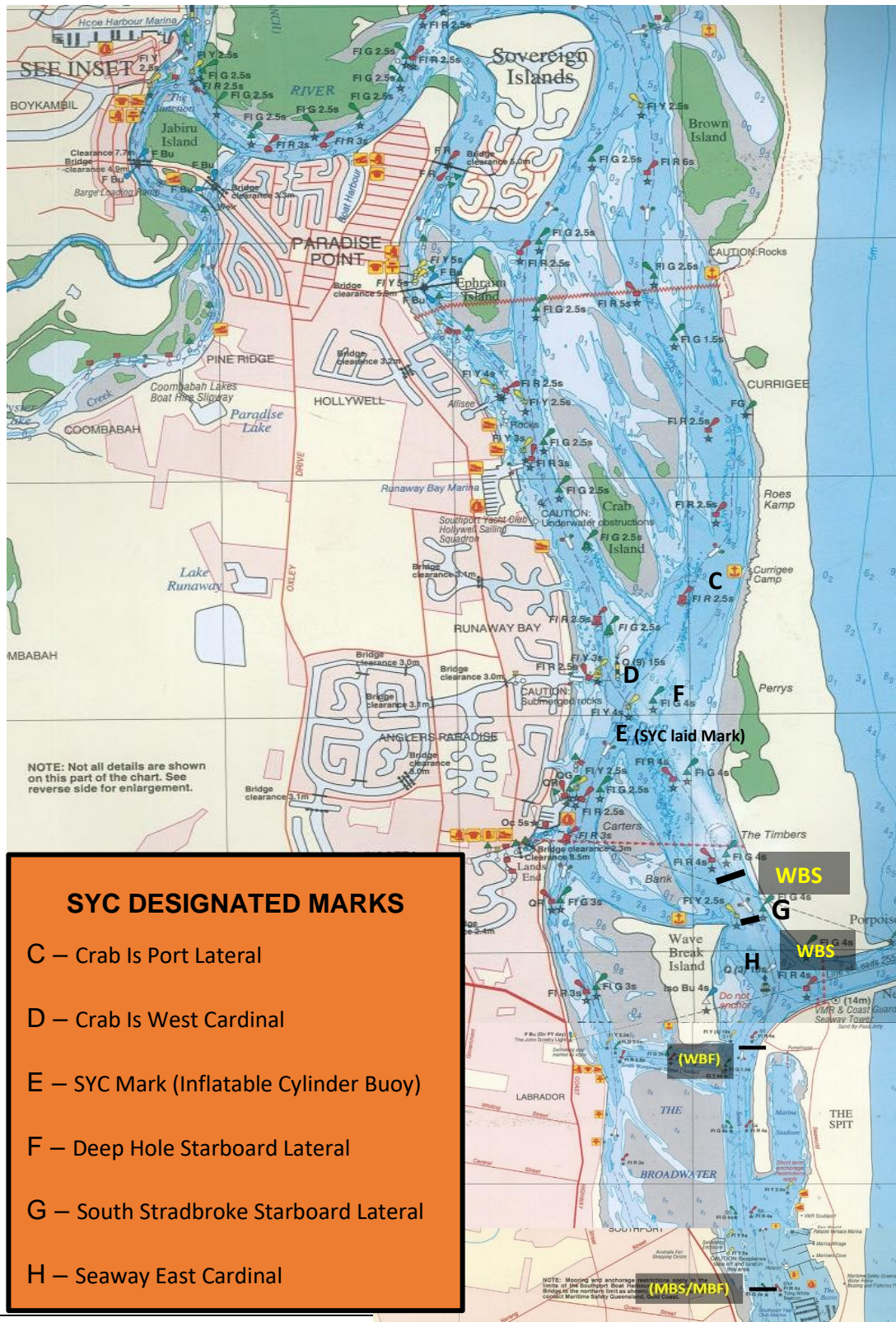
BUOY	DESCRIPTION
START	Orange inflatable cylinder with Black Top
Barging Buoy	Pink teardrop

COURSE (Numeral Pennant)	MARK ROUNDINGS
1	START – W - FINISH
2	START – A - FINISH
3	START – F (s) – W (s) - FINISH
4	START – W (S) – A - FINISH
5	START – W (S) – A – W - FINISH
6	START – W (S) – F1 (s) - FINISH
7	START – W – E - FINISH
8	START – E – W - FINISH
9	A course set by the Race Committee as advised in the Skippers Briefing Email.
10	START – W (s) – START (s) – W (s) - FINISH

NB: ALL MARKS TO BE LEFT/PASSED TO PORT UNLESS INDICATED BY (S) – IN WHICH CASE MARKS ARE TO BE LEFT/PASSED TO STARBOARD.



ATTACHMENT C - SYC OFFSHORE SERIES – INSHORE TWILIGHT MARKS





ATTACHMENT D – SYC OFFSHORE SERIES – INSHORE TWILIGHT COURSES & MARK ROUNDINGS

COURSE (Numeral Pennant)	MARK ROUNDINGS	WIND
1	WBS – C – H (S) - MBF	NORTHERLY
2	WBS – C – E – G – C – E – H(S)MBF	NORHTERLY
3	WBS – C – G – C – E – H (s) - WBF	SOUTHERLY
4	MBS – H – E(S) - G – F – H(s) - WBF	SOUTHERLY
5	MBS – H – C – E – C – E – H (s) - WBF	SOUTHERLY
6	MBS – H – C – E – G – C – E – H (s) - WBF	SOUTHERLY
7	MBS – H – E (s) - G – C – F – H (s) - WBF	SOUTHERLY
8	MBS – H – F (s) - C – E – G – E – H (s) - WBF	SOUTHERLY
9	WBS – E – G – F(s) – G – F(s) – C – F - WBF	NORTHERLY/SOUTHERLY

NB: ALL MARKS TO BE LEFT/PASSED TO PORT UNLESS INDICATED BY (S) – IN WHICH CASE MARKS ARE TO BE LEFT/PASSED TO STARBOARD.