



2023/24 Sailing Season

THURSDAY TWILIGHT DIVISION

SAILING INSTRUCTIONS





TT THURSDAY TWILIGHT DIVISION
Schedule May 2023-April 2024

| | |
|--------------|-------------------------------------|
| Winter 1/14 | Thursday 4 th May |
| Winter 2/14 | Thursday 11 th May |
| Winter 3/14 | Thursday 18 th May |
| Winter 4/14 | Thursday 25 th May |
| Winter 5/14 | Thursday 1 st June |
| Winter 6/14 | Thursday 8 th June |
| Winter 7/14 | Thursday 15 th June |
| Winter 8/14 | Thursday 22 nd June |
| Winter 9/14 | Thursday 29 th June |
| Winter 10/14 | Thursday 6 th July |
| Winter 11/14 | Thursday 13 th July |
| Winter 12/14 | Thursday 20 th July |
| Winter 13/14 | Thursday 27 th July |
| Winter 14/14 | Thursday 10 th August |
| Spring 1/14 | Thursday 14 th September |
| Spring 2/14 | Thursday 21 st September |
| Spring 3/14 | Thursday 28 th September |
| Spring 4/14 | Thursday 5 th October |
| Spring 5/14 | Thursday 12 th October |
| Spring 6/14 | Thursday 19 th October |
| Spring 7/14 | Thursday 26 th October |
| Spring 8/14 | Thursday 2 nd November |
| Spring 9/14 | Thursday 9 th November |
| Spring 10/14 | Thursday 16 th November |
| Spring 11/14 | Thursday 23 rd November |
| Spring 12/14 | Thursday 30 th November |
| Spring 13/14 | Thursday 7 th December |
| Spring 14/14 | Thursday 14 th December |
| Summer 1/14 | Thursday 18 th January |
| Summer 2/14 | Thursday 25 th January |
| Summer 3/14 | Thursday 1 st February |
| Summer 4/14 | Thursday 8 th February |
| Summer 5/14 | Thursday 15 th February |
| Summer 6/14 | Thursday 22 nd February |
| Summer 7/14 | Thursday 29 th February |
| Summer 8/14 | Thursday 7 th March |
| Summer 9/14 | Thursday 14 th March |
| Summer 10/14 | Thursday 21 st March |
| Summer 11/14 | Thursday 28 th March |
| Summer 12/14 | Thursday 4 th April |
| Summer 13/14 | Thursday 11 th April |
| Summer 14/14 | Thursday 18 th April |



Additional SYC SPECIAL EVENTS Available

| Event / Regatta Name | Date |
|-----------------------------------------------|-----------------------------------------------------------------------|
| SAIL PAST & BLESSING THE FLEET | Saturday 9 th September |
| BREAKING OF THE FLAG CEREMONY & DA\$H 4 CA\$H | Sunday 10 th September |
| SAIL PARADISE REGATTA | Saturday 30 th September to Monday 2 nd October |
| BURLEIGH BASH | Sunday 29 th October |
| TED ELKES MEMORIAL REGATTA | Saturday 18 th and Sunday 19 th November |
| TWO HANDED RACE | Saturday 2 nd March |
| DUX BIRTHDAY CELEBRATIONS | Sunday 24 th March |
| LADIES DAY RACE | Saturday 27 th April |

THURSDAY TWILIGHT DIVISION SERIES FEES

| | |
|-----------------------------------------------|--------------------------------------------------------------------------|
| BLOCK WHOLE SEASON DISCOUNT (42 Races) | \$380.00 |
| SUMMER TWILIGHT SERIES (14 Races) | \$160.00 |
| WINTER TWILIGHT SERIES (14 Races) | \$160.00 |
| SPRINT TWILIGHT SERIES (14 Races) | \$160.00 |
| Casual Race Entry (per race day) | \$20.00 SYC Member \$30.00 Non SYC Member (max entry 3) |

SAILING COMMITTEE DIVISIONAL REPRESENTATIVES:

SYC Vice Commodore of Sail:

Glenn Burrell 0411 422 232 glenn@aquaticelements.com.au

SYC Sailing Operations Manager:

Simon Turpin 0400 558 917 sailing.ops@sycgc.com.au

OD - Offshore Division Representative:

Barry Berg 0400 110 555 barry.wildstyle@gmail.com

TT – Thursday Twilight Division Representative:

Peter Karlovic 0400 391 561 sailorpk@outlook.com

ID – Inshore Division Representative:

Wayne Kirby 0418 950 250 wayne@kirbyfamily.id.au

OTBC – Off the Beach Catamaran Division Representative:

David Chester 0431 316 574 david_chester202@hotmail.com

OTBD – Off the Beach Dinghy Division Representative:

Stuart Waters 0400 155 600 stuartwaters@live.com.au

HC – Handicap Committee Representatives:

Russell Birse, Ian Ball, Colin Metcher. sailing.reception@sycgc.com.au



TABLE OF CONTENTS

| | |
|------------------------------------------------------------|----|
| INVITATION..... | 5 |
| 1. RULES..... | 5 |
| 2. ELIGIBILITY | 5 |
| 3. COMMUNICATION..... | 5 |
| 4. CHANGES TO SAILING INSTRUCTIONS..... | 6 |
| 5. SIGNALS MADE ASHORE | 6 |
| 6. SCHEDULE OF RACES | 6 |
| 7. SAIL RESTRICTIONS | 6 |
| 8. RACING AREA..... | 6 |
| 9. THE COURSES..... | 6 |
| 10. MARKS | 7 |
| 11. AREAS THAT ARE OBSTRUCTIONS | 7 |
| 13. THE START..... | 7 |
| 14. CHANGE OF THE NEXT LEG OF THE COURSE | 8 |
| 15. SHORTENED COURSE..... | 8 |
| 16. THE FINISH | 8 |
| 17. PENALTY SYSTEM & PENALTIES..... | 8 |
| 18. TIME LIMIT | 8 |
| 19. PROTESTS..... | 8 |
| 20. SCORING | 9 |
| 21. SAFETY REGULATIONS | 9 |
| 22. REPLACEMENT OF CREW OR EQUIPMENT | 9 |
| 23. EQUIPMENT AND MEASUREMENT CHECKS | 10 |
| 24. OFFICIAL BOATS..... | 10 |
| 25. SUPPORT TEAMS | 10 |
| 26. RUBBISH DISPOSAL | 10 |
| 27. PRIZES | 10 |
| 28. PERPETUAL PRIZES..... | 10 |
| 29. DISCLAIMER OF LIABILITY | 10 |
| 30. INSURANCE | 11 |
| 31. MEDIA RIGHTS..... | 11 |
| 32. FURTHER INFORMATION | 11 |
| ATTACHMENT A - SYC TWILIGHT RACING AREA..... | 12 |
| ATTACHMENT B - SYC TWILIGHT MARKS | 13 |
| ATTACHMENT D - SYC TWILIGHT COURSES & MARK ROUNDINGS | 15 |
| ATTACHMENT E - DECLARATION | 16 |



INVITATION

Southport Yacht Club's Thursday Twilight Division is designed for fun and social sailing on the beautiful waters of the Broadwater between Main Beach and Runaway Bay on the Gold Coast. Combining this with spectacular sunsets, magnificent scenery and friendly healthy competition, provides an unforgettable experience that will be thoroughly enjoyed and shared by all.

1. RULES

- 1.1 The Organising Authority (OA) is Southport Yacht Club Inc.
- 1.2 Races will be governed by the current rules as defined in the Racing Rules of Sailing (RRS) and the Prescriptions of Australian Sailing (AS).
- 1.3 A minimum of five (5) participants are required to constitute a race. If there are less than the required amount the race shall be abandoned.
- 1.4 All boats shall comply with AS Special Regulations (SR): Part 1 – Category7 *Plus* (Additional items required by the OA).
- 1.5 All boats shall supply at time of entry a current AS SR Equipment Audit Form Category 7 Plus (or higher) that has been certified by an approved AS Club / National Equipment Auditor. AS SR Equipment Audit forms are available from the OA website.
- 1.6 All boats shall comply with the Transport Operations (Marine Safety) Act 1994 and Regulation. In the event of a reportable Marine Incident the SYC Sailing Officer is to be notified as soon as practical; but no later than 1 hour after the last boat has finished, a copy of the MSQ Marine Incident Report is required to be lodged with the OA at the same time it is lodged with Maritime Safety Queensland.
- 1.7 The *International Regulations for the Prevention of Collisions at Sea 1972* (COLREGS) shall apply at all times. The *Racing Rules of Sailing* (RRS) will apply only between those ships that are participating in the event, for the duration of the event. Should interaction occur with non-participating ships, then COLREGS shall apply to all ships and shall over-ride all other rules. This is a condition governed by local Statutory Authorities for the OA's approved Aquatic Event Permit.
- 1.9 RRS Appendix T – Arbitration applies.
- 1.10 Compliance with SYC's current Sailing Season Policy.
- 1.11 All competitors are reminded of RRS 1.1 Helping Those in Danger; A boat or competitor shall give all possible help to any person or vessel in danger.

2. ELIGIBILITY

- 2.1 Thursday Twilight Division (TT) races are open to all Monohull and Multihull Yachts (both trailable and fixed keel) on the register of a yacht or sailing club affiliated with AS.
- 2.2 Off the Beach classes are not permitted to sail in TT races.

3. COMMUNICATION

- 3.1 On each race day before 1100hrs, the OA shall email the "Primary Contact Person" of each boat, a "SYC Thursday Twilight Series Briefing & Communication Notice".
- 3.2 This person shall then provide a "Read Receipt" of this Notice, providing acknowledgement and the boats intention to race.
- 3.3 A "Confirmed" email will then be returned by the OA before 1400hrs confirming the boats eligibility to race on that day.
- 3.4 Only "Confirmed" boats are permitted to participate in a race.
- 3.5 On the water, the Race Committee intends to monitor and communicate with competitors on VHF09 radio channel.



4. CHANGES TO SAILING INSTRUCTIONS

- 4.1 Changes to Sailing Instructions (SI) will be emailed to competitors on the TT Distribution List and posted on the OA's website on the Official Noticeboard and the TT page not less than sixty (60) minutes before the scheduled start time.

5. SIGNALS MADE ASHORE

- 5.1 Signals made ashore will be displayed on the official flag-pole located on the eastern lawn of the OA' Main Beach Clubhouse.

6. SCHEDULE OF RACES

- 6.1 The schedule of races is in accordance with the listed schedule at the beginning of these SI.

7. SAIL RESTRICTIONS

- 7.1 The difference between a headsail and a spinnaker is that the width of a headsail, measured between the midpoints of its luff and leech, is less than 75% of the length of its foot.
- 7.2 The use of a Gennaker, Blooper, Spinnaker, Code Zero or any other purpose-built downwind sail is prohibited.
- 7.3 The headsail must be fully hanked, or attached by means of a luff groove device, to the forestay.
- 7.4 Spinnaker poles and/or whisker poles are allowed for poling out headsails.
- 7.5 Boats shall use only one mainsail throughout the Race but may change their headsail throughout the Race.
- 7.6 Substitution of damaged or lost equipment will not be allowed unless authorized by the Race Committee. Requests for substitution shall be made to the Sailing Office at the first reasonable opportunity.

8. RACING AREA

- 8.1 Attachment A – SYC TWILIGHT RACING AREA shows the approximate location of the allocated racing area.

9. THE COURSES

- 9.1 All courses for the season are identified in Attachment C – SYC TWILIGHT COURSES, including the order in which the marks are to be passed and the side on which each mark is to be passed.
- 9.2 The Course to be sailed will be indicated by the Course Number numeral Pennant being displayed on the Start Boat.



10. MARKS

- 10.1 All boats shall maintain a minimum distance of 3 metres from all International Association of Marine Aids to Navigation and Lighthouse Authorities (IALA) marks*. This is a condition governed by local Statutory Authorities for the OA's approved Aquatic Event Authority. Any boats failure to comply with this minimum 3 metre distance, may jeopardise all future TT racing for all boats.
- 10.2 All boats shall give due consideration to the weather conditions including tidal effect (current) wind conditions and their intended course when passing or rounding an IALA mark.
- 10.3 *Competitors may refer to the Maritime Safety Queensland Boating Maps located at <http://www.msq.qld.gov.au/Boating-maps/Gold-Coast-guides> for detailed maps.

11. AREAS THAT ARE OBSTRUCTIONS

- 11.1 Areas outside of the intended channel(s) defined by the IALA marks north of and including the Crab Island West Cardinal "Q(9)15s" are considered an obstruction. For the purposes of this definition, it shall be considered that a competitor has remained clear of the obstruction provided they have left all IALA marks to their required side.
- 11.2 The finish line is an obstruction, unless finishing. Boats crossing the finish line incorrectly will be scored Did Not Finish (DNF) without a hearing. This changes RRS 35, A4 and A5.

13. THE START

- 13.1 Races will be started using allocated handicap start times for each boat (a Pursuit Race):
- 13.1.1 A boat shall start **no earlier than** her allocated handicap start time. All handicap start times are listed as Australian Eastern Standard Time (AEST).
- 13.1.2 Boats are recommended to synchronise their times at:
<http://www.timeanddate.com/worldclock/fullscreen.html?n=47>
- 13.2 The first starting signal for racing covered by these sailing instructions shall be:

| EVENT SERIES | TIME |
|-------------------------|--------------|
| Spring Series (Pursuit) | From 1530hrs |
| Summer Series (Pursuit) | From 1530hrs |
| Winter Series (Pursuit) | From 1500hrs |

- 13.3 All boats shall keep clear of the start line and not cross in either direction within five (5) minutes prior to their allocated handicap start time.
- 13.4 The starting line for Thursday Twilight Races will be in accordance with Attachment B – SYC MARKS and Attachment C – SYC TWILIGHT COURSES.
- 13.5 A boat starting later than five (5) minutes after her start time will have her CHC reviewed by the Race Committee and Handicap Committee and her next AHC may be adjusted to ensure fairness to all competitors. This will be conducted without a hearing and changes RRS A3, A4 & A5.
- 13.6 Definitions – Racing. A boat is racing from her preparatory signal until she finishes and clears the finishing line and marks or retires, or until the race committee signals a general recall, postponement or abandonment. The preparatory signal for a boat shall be 4 (four) minutes before her allocated handicap start time. This changes RRS26.



14. CHANGE OF THE NEXT LEG OF THE COURSE

14.1 The Race Committee may change a leg of the course that begins at a rounding mark by changing the position of the next mark (or the finishing line) and signalling all boats before they begin the leg. The next mark need not be in position at that time.

15. SHORTENED COURSE

15.1 The Race Committee may shorten course at any part of the course. Boats shall finish between the Race Committee vessel displaying Code Flag "S" and a prominent feature of their choice (which may include any laid mark).

16. THE FINISH

16.1 The finishing line will be in accordance with Attachment B – SYC MARKS and Attachment C – SYC TWILIGHT COURSES.

17. PENALTY SYSTEM & PENALTIES

17.1 For all boats rule 44.1 is changed so that the Two-Turns Penalty is replaced by a One-Turn Penalty.

17.2 To get clear after grounding or colliding with a vessel or object, a boat may use an engine to get clear. A one turn penalty shall be taken as soon as possible after the incident. A Declaration to the race committee shall be made as soon as possible. The starting handicap for the boat in the following race shall not be adjusted from the previous race. This changes RRS 44, A3.

17.3 A boat using an engine within 1 (one) minute of her start, shall complete a one turn penalty to be taken as soon as possible after the start. A Declaration to the race committee shall be made as soon as possible. The starting handicap for the vessel in the following race shall not be adjusted accordingly. This changes RRS 44, A3.

17.4 An infringement of any other rule or Sailing Instruction will result in a boat receiving an Event Nominated Penalty (ENP) which shall be 20% of the score for Did Not Finish, rounded to the nearest whole number (0.5 rounded upward).
This changes RRS 29, 35, 44, A4 & A5.

18. TIME LIMIT

18.1 The Winter Series time limit for all boats to be finished is 1800 hours.

18.2 The Spring Series time limit for all boats to be finished is 1830 hours.

18.3 The Summer Series time limit for all boats to be finished is 1830 hours.

18.4 For a Boat that continued racing up until the Time Limit but could not Finish shall be scored TLE (Time Limit Expired) which will be the number of boats that Finished the Race plus 3 points.

19. PROTESTS

19.1 RRS Appendix T- ARBITRATION applies.

19.2 Protest forms are available at the OA's Main Beach reception, Sailing Office at Hollywell and may also be downloaded from their website. Protests shall be delivered there within the Protest Time Limit.

19.3 The Protest Time Limit is sixty (60) minutes after the last boat finishes the race or the race committee signals no more racing today, whichever is later. The also applies to all protests by the Race Committee and Protest Committee and requests for redress. This changes RRS 61.3 and 62.2.



20. SCORING

- 20.1 The low points scoring system of RRS Appendix A.
- 20.2 For a Boat that Did Not Finish (DNF) they shall be scored the number of boats that have signed on for the Race plus 1 point.
- 20.3 For a boat that Did Not Compete (DNC) they shall be scored the number of boats that have signed on for the Race plus 3 points.
- 20.4 Four (4) races are required to constitute a series. When fewer than five (5) races have been completed, all scores shall count.
- 20.5 When five (5) to eight (8) races have been completed a boat's series score will be the total of her race scores excluding her worst score.
- 20.6 When nine (9) to twelve (12) races have been completed a boat's series score will be the total of her race scores excluding her two (2) worst scores.
- 20.7 When thirteen (13) or more races have been completed a boat's series score will be the total of her race scores excluding her three (3) worst scores.
This changes RRS Appendix A5
- 20.8 A boat will receive a 1 minute time correction to its elapsed time if she takes a Sail Pass Member onboard. The Skipper must advise the OA prior to the start of the race to be valid (if a pursuit race the time of the first starter) and this time correction may only be applied to a maximum of 2 Sail Passes in a race. This changes RRS 90.3 Appendix A3.

21. SAFETY REGULATIONS

- 21.1 All boats shall always maintain a listening watch on VHF09.
- 21.2 All boats shall sign on with Race Control via VHF09 at least five (5) minutes prior to their allocated handicap start time, confirming Boat Name, Sail # and the number of persons on board (P.O.B.).
- 21.3 A boat that retires from a race shall notify Race Control on VHF09 as soon as possible.
- 21.4 Unless in use, no part of the anchor may project forward of the bow at any time whilst racing. Anchors must be available for immediate use in the event of an emergency.
- 21.5 Where lifelines complying with AS SR Part 1 Section 3 Rule 3.12 have not been fitted, all crew shall wear a visible life jacket in accordance with AS SR Part 1 Section 5.
- 21.6 Boats failing to comply with any of these Safety Regulations will be scored ENP (Event Nominated Penalty) without a hearing. The penalty shall be 20% of the score for Did Not Finish, rounded to the nearest whole number (0.5 rounded upward). This changes RRS 44, A3, A4 and A5.

22. REPLACEMENT OF CREW OR EQUIPMENT

- 22.1 Substitution of damaged or lost equipment will not be allowed unless authorized by the Race Committee. Requests for substitution shall be made to the Race Committee at the first reasonable opportunity.
- 22.2 Failing to notify the SYC Sailing Office of changes to a boats configuration or rating, may result in protest by the Race Committee. Penalties for these breaches may be less than disqualification if the Protest Committee so decides.



23. EQUIPMENT AND MEASUREMENT CHECKS

- 23.1 A boat or equipment may be inspected at any time for compliance with the class rules, notice of race and sailing instructions.
- 23.2 When instructed by a Race Official, a boat shall proceed to a designated area for inspection.

24. OFFICIAL BOATS

- 24.1 All official boats are numbered by the OA and marked with the OA Burgee.

25. SUPPORT TEAMS

- 25.1 Team leaders, coaches and other support personnel shall stay no less than one hundred (100) metres outside areas where boats are racing from the time of the preparatory signal for the first class to start until all boats have finished or retired or the race committee signals a postponement, general recall or abandonment.
- 25.2 No disturbing wash is to be created near a competitor on the racecourse.

26. RUBBISH DISPOSAL

- 26.1 Boats shall not put rubbish in the water. Rubbish may be placed aboard support and Race Committee boats.

27. PRIZES

- 27.1 A presentation of results will be held after each day of racing at the earliest possible convenience at the OA Main Beach Clubhouse.
- 27.2 Daily prizes will be awarded to 1st, 2nd and 3rd placings.
- 27.3 Other prizes may be awarded at the discretion of the OA.

28. PERPETUAL PRIZES

- 28.1 The Sailing Presentation for each Series of TT and the overall TT Champion will take place in the OA's Clubhouse after each Sailing Season.
- 28.2 The Overall TT Club Champion for the Sailing Season will be determined using the combined results from the Winter, Spring and Summer twilight series.
- 28.3 The skipper/owner of the boat must be a current financial member of the OA and their yacht registered with OA

29. DISCLAIMER OF LIABILITY

- 29.1 All those taking part in races conducted by the OA do so at their own risk and responsibility.
- 29.2 The OA, any sponsor and any party involved in the organisation of any event disclaims any and every responsibility for any loss, damage, injury to persons and/or things, both ashore and at sea, as a consequence of participation in any way in the races covered by these sailing instructions.
- 29.3 Attention is drawn to RRS 3 which states: "The responsibility for a boat's decision to participate in a race or to continue racing is hers alone."



30. INSURANCE

30.1 Each participating boat shall be insured with valid third-party liability insurance with a minimum cover of \$10M (AUD).

31. MEDIA RIGHTS

31.1 In participating in the TT, a competitor grants to the OA and the sponsors, the right in perpetuity, to make, reproduce, edit, use and show, from time to time and at their discretion, any motion pictures, still pictures and live, taped or film television and other reproductions of him/ her taken during the Sailing Season and to use his / her likeness, voice, name and any other information in any material related without compensation.

32. FURTHER INFORMATION

32.1 Should you require further information, please do not hesitate to contact:

Thursday Twilight Division Representative

Pete Karlovic

0400 391 561

sailorpk@outlook.com

Southport Yacht Club Inc. Sailing Office

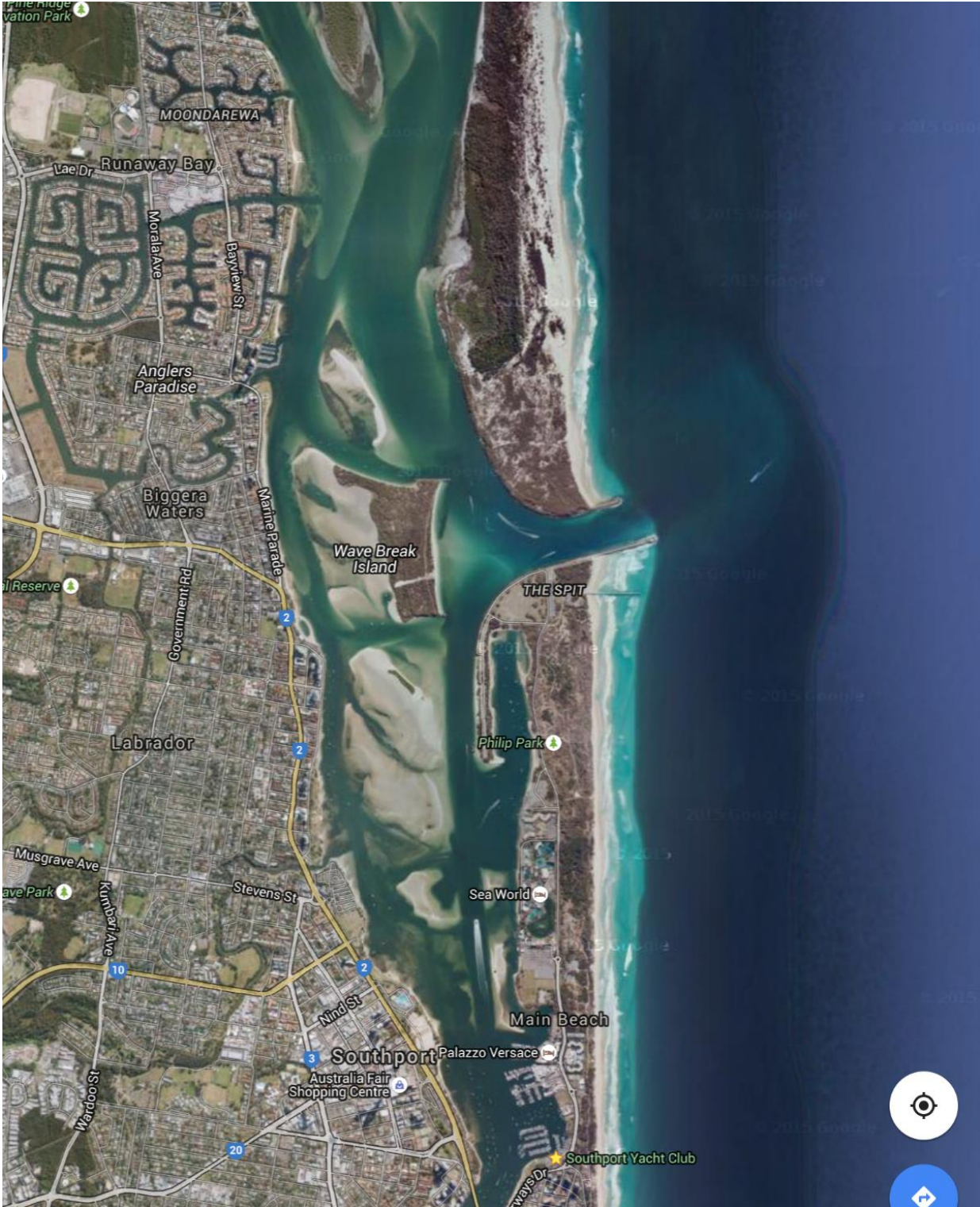
1 Marina Crescent, HOLLYWELL QLD 4216.

Phone: (07) 5537 7030 Email:

sailing.reception@sycgc.com.au



ATTACHMENT A - SYC TWILIGHT RACING AREA





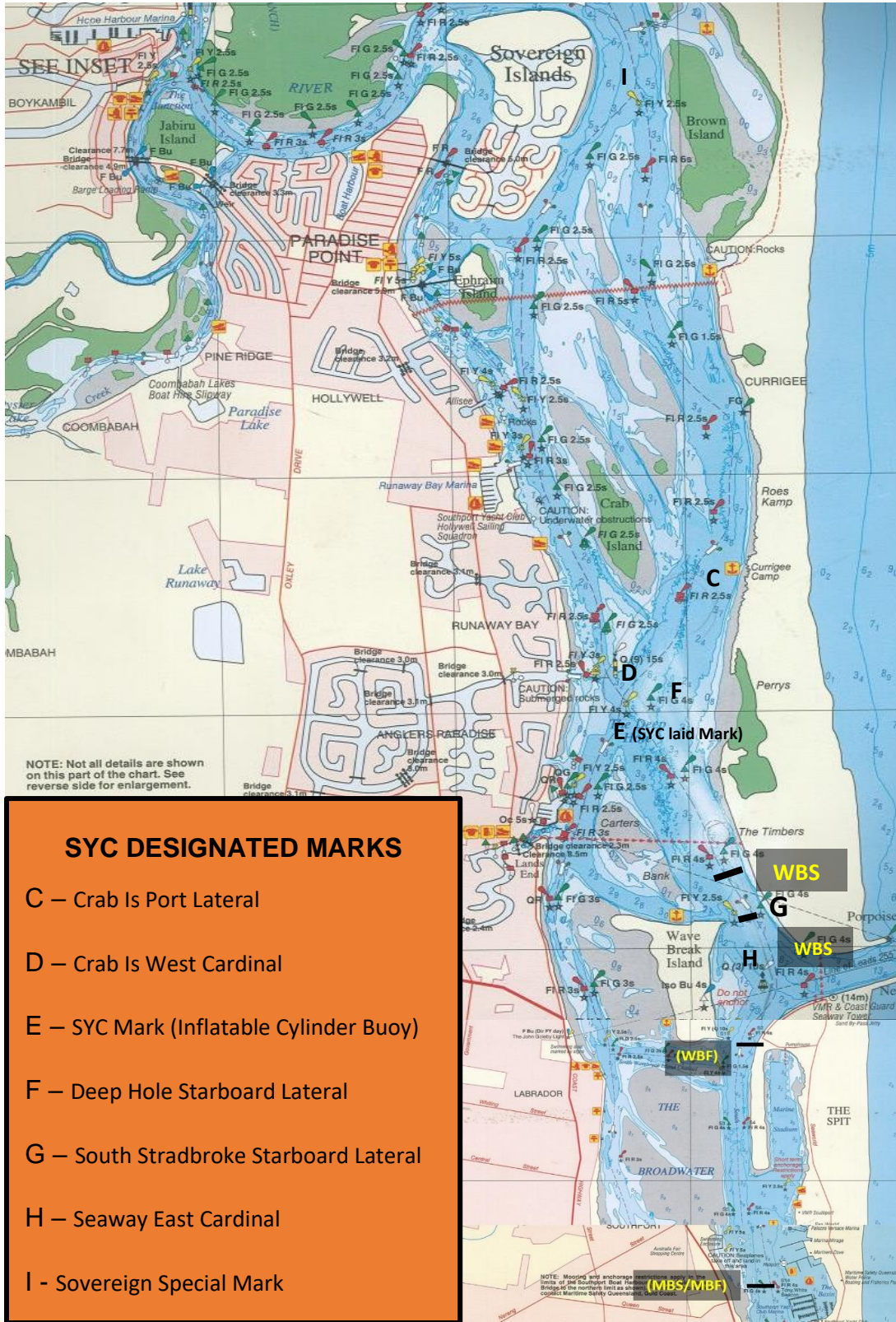
ATTACHMENT B - SYC TWILIGHT MARKS

| BUOY | DESCRIPTION |
|----------------|----------------------------------------------------------------------------------|
| START / FINISH | IALA Beacons – As described below or Black & White Chequered inflatable cylinder |
| Barging Buoy | Pink teardrop |

| DESIGNATED MARKS | LOCATION / DESCRIPTION | APPROX. GPS COORDINATES (WGS84 Datum) |
|---------------------------|-------------------------------------------------------------------------------------------|---------------------------------------|
| Wave-Break Start 1 (WBS1) | Between first Port/Starboard Laterals (From the South near southern end of Carters Banks) | 27° 55.9'S 153° 25.2'E |
| Wave-Break Start 2 (WBS2) | Between Second Port/Starboard Laterals (North to WBS1) | 27° 55.3'S 153° 24.9'E |
| Wave-Break Finish (WBF) | Between Port Lateral & Special Mark (Yellow cross) | 27° 56.4'S 153° 25.3'E |
| Main Beach Start / Finish | Port/Starboard Laterals (Opposite SYC D arm jetty) | 27° 54.1'S 153° 24.2'E |
| C | Crab Is Port Lateral | 27° 54.5'S 153° 24.9'E |
| D | Crab Is West Cardinal | 27° 54.8'S 153° 24.6'E |
| E | SYC Mark (Inflatable Cylinder Buoy) | 27° 55.1'S 153° 24.7'E |
| F | Deep Hole Starboard Lateral | 27° 55.0'S 153° 24.8'E |
| G | South Stradbroke Starboard Lateral | 27° 55.8'S 153° 25.3'E |
| H | Seaway East Cardinal | 27° 56.2'S 153° 25.3'E |
| I | Sovereign Special Mark | 27° 52.4'S 153° 24.8'E |



ATTACHMENT C - SYC TWILIGHT MARKS



SYC DESIGNATED MARKS

- C – Crab Is Port Lateral
- D – Crab Is West Cardinal
- E – SYC Mark (Inflatable Cylinder Buoy)
- F – Deep Hole Starboard Lateral
- G – South Stradbroke Starboard Lateral
- H – Seaway East Cardinal
- I - Sovereign Special Mark



ATTACHMENT D - SYC TWILIGHT COURSES & MARK ROUNDINGS

| COURSE (Numeral Pennant) | MARK ROUNDINGS | WIND |
|--------------------------------|----------------------------------------------------|---------------------|
| 1 | WBS – C – H (S) - MBF | NORTHERLY |
| 2 | WBS – C – E – G – C – E – H(S)MBF | NORHTERLY |
| 3 | WBS – C – G – C – E – H (s) - WBF | SOUTHERLY |
| 4 | MBS - H - E(S) - G - F - H(s) - WBF | SOUTHERLY |
| 5 | MBS – H – C – E – C – E – H (s) - WBF | SOUTHERLY |
| 6 | MBS – H – C – E – G – C – E – H (s) - WBF | SOUTHERLY |
| 7 | MBS - H – E (s) - G - C - F - H (s) - WBF | SOUTHERLY |
| 8 | MBS - H – F (s) - C - E - G - E – H (s) - WBF | SOUTHERLY |
| 9 | MBS – H – F (s) – C - I – C (s) – F – H (s) - WBF | SOUTHERLY |
| 10 | WBS – F (s) – C - I – C (s) – F – H (s) – MBF | NORTHERLY/SOUTHERLY |
| 11 | WBS – E – G – F(s) – G – F(s) – C – F - H(s) - WBF | NORTHERLY/SOUTHERLY |

NB: ALL MARKS TO BE LEFT/PASSED TO PORT UNLESS INDICATED BY (S) – IN WHICH CASE MARKS ARE TO BE LEFT/PASSED TO STARBOARD.



ATTACHMENT E - DECLARATION

To: the Sailing Operations Manager
SOUTHPORT YACHT CLUB.
Phone (07) 5537 7030, **Mobile 0400 558 917**, sailing.ops@sycgc.com.au

| BOAT NAME | | SAIL NUMBER | |
|-----------|--|-------------|--|
|-----------|--|-------------|--|

I declare that during the race the following Rules were NOT observed and / or Infringements occurred and / or Penalties taken, with an explanation given as follows:

| |
|--|
| |
| |
| |
| |
| |
| |
| |
| |

Witnessed by (Boat Name/s, Skipper/Crew Name/s):

| |
|--|
| |
| |
| |

Name of Person-In-Charge: _____ Date: __/__/__.

Signature of Person-In-Charge: _____.