

# NS14 AUSTRALIAN CHAMPIONSHIP - 2024



## SAILING INSTRUCTIONS

Saturday 6th January to  
Wednesday 10th January 2024

Organising Authorities



# Southport Yacht Club Inc.

Hollywell Sailing Squadron | 1 Marina Crescent | Hollywell QLD 4216

07 5537 7030 | [www.southportyachtclub.com.au](http://www.southportyachtclub.com.au)

**TABLE OF CONTENTS**

1. RULES.....3

2. NOTICES TO COMPETITORS.....3

3. CHANGES TO SAILING INSTRUCTIONS.....3

4. SIGNALS MADE ASHORE .....3

5. SCHEDULE OF RACES .....4

6. CLASS FLAGS .....4

7. RACING AREA'S.....4

8. THE COURSES.....5

9. MARKS .....5

10. AREAS THAT ARE OBSTRUCTIONS .....5

11. THE START.....5

12. CHANGE OF THE NEXT LEG OF THE COURSE .....5

13. THE FINISH .....5

14. PENALTIES.....5

15. TIME LIMITS & TARGET TIMES.....6

16. PROTESTS AND REQUESTS FOR REDRESS.....6

17. SCORING .....7

18. SAFETY REGULATIONS .....7

19. REPLACEMENT OF CREW OR EQUIPMENT .....7

20. EQUIPMENT AND MEASUREMENT CHECKS.....8

21. OFFICIAL BOATS.....8

22. SUPPORT BOATS .....8

23. TRASH DISPOSAL.....8

24. BERTHING .....8

25. RADIO COMMUNICATION .....8

26. TRACKING DEVICES.....8

27. PRIZES .....9

28. RISK STATEMENT .....9

29. ADDENDUM A – RACING AREA/S .....10

30. ADDENDUM B – THE COURSES.....11

31. ADDENDUM C – SUPPORT PERSON REGULATIONS (SPRs).....12

## 1. RULES

- 1.1 The Regatta will be governed by the rules as defined in the current Racing Rules of Sailing (RRS) including the Australian Sailing (AS) Prescriptions.
- 1.2 The current Special Regulations of AS Part 2 off the beach boats.
- 1.3 The NS14 Association of Australia Class Rules.
- 1.4 When conflict occurs between the Notice of Race and the Sailing Instructions, the rules of the Sailing Instructions shall prevail. This changes RRS 63.7.
- 1.5 RRS Appendix T – Arbitration applies.
- 1.6 The *International Regulations for the Prevention of Collisions at Sea 1972* (COLREGS) shall apply at all times. The *Racing Rules of Sailing* (RRS) will apply only between those ships that are participating in the event, for the duration of the event. Should interaction occur with non-participating ships, then COLREGS shall apply to all ships and shall over-ride all other rules. This is a condition imposed by Local Governing Authorities.
- 1.7 All competitors are reminded of RRS Part 1.1 Helping Those in Danger, “A boat or competitor shall give all possible help to any person or vessel in danger”.
- 1.8 All competitors are reminded of RRS 3 Decision to Race, “The responsibility for a boat’s decision to participate in a race or to continue racing is hers alone”.
- 1.9 Support Boat Regulations – refer to attached Addendum C.
- 1.10 Rules of the NS14 Association of Australia Class Rules are amended in accordance with NOR 3.3 for MG14 Class Boats accordingly.

## 2. NOTICES TO COMPETITORS

- 2.1 Notices to competitors will be posted on the official notice board located outside the Southport Yacht Club Sailing Office.

## 3. CHANGES TO SAILING INSTRUCTIONS

- 3.1 Any change to the Sailing Instructions will be posted before 0900 hours on the day it will take effect, except that any change to the schedule of races will be posted by 1800 hours on the day before it will take effect.

## 4. SIGNALS MADE ASHORE

- 4.1 Signals made ashore will be displayed on the flagstaff located at the SYC Hollywell clubhouse.
- 4.2 When flag AP is displayed ashore ‘1 minute’ is replaced with ‘not less than 60 minutes’ in the race signal AP.

## 5. SCHEDULE OF RACES

5.1 The schedule of races is as per the following table:

DATE	EVENT	TIME
Fri 5 <sup>th</sup> Jan 2024	Competitor & Boat Registration	1200hrs - 1600hrs
Sat 6 <sup>th</sup> Jan 2024	Competitor & Boat Registration Compulsory Skippers Briefing Race Day 1 Warning Signal Sausage Sizzle & Daily Results	0800hrs – 0900hrs 0900hrs 1055hrs ASAP after racing
Sun 7 <sup>th</sup> Jan 2024	Compulsory Skippers Briefing Race Day 2 Warning Signal Sausage Sizzle & Daily Results	0900hrs 1055hrs ASAP after racing
Mon 8 <sup>th</sup> Jan 2024	Compulsory Skippers Briefing Race Day 3 Warning Signal Sausage Sizzle & Daily Results	0900hrs 1055hrs ASAP after racing
Tues 9 <sup>th</sup> Jan 2024	Compulsory Skippers Briefing Race Day 4 Warning Signal Sausage Sizzle & Daily Results	0900hrs 1055hrs ASAP after racing
Wed 10 <sup>th</sup> Jan 2024	Compulsory Skippers Briefing Race Day 5 Warning Signal Sausage Sizzle Final Results Presentation	0900hrs 1055hrs ASAP after racing Not Before 1600hrs

5.2 Warning Signal times are deemed to be “Not Before”.

5.3 A maximum of three (3) races will be sailed in one day.

5.4 No warning signal shall be made after 1430hrs on Wednesday 10<sup>th</sup> January 2024.

5.5 The OA reserves the right to modify the schedule according to prevailing weather conditions, weather forecasts, or unforeseen circumstances.

## 6. CLASS FLAGS

6.1 The Class flag will be a white flag with the black NS14 insignia.

## 7. RACING AREA'S

7.1 Addendum A shows the approximate location of the racing areas.

7.2 Course locations for either “Inshore” or “Offshore” will be confirmed at the Compulsory Skippers Briefing.



## **8. THE COURSES**

- 8.1 The diagrams in Addendum B shows the approximate position of the rounding marks, the order in which marks are to be passed and the side on which each mark is to be passed.
- 8.2 The course number to be sailed will be indicated by the relevant numeral pennant being displayed on the Race Committee signal vessel.

## **9. MARKS**

- 9.1 The Start Mark will be Mark 3 (Yellow inflatable buoy)
- 9.2 Mark's 1, 2 and 3 will be yellow inflatable buoys.
- 9.3 The Finish Mark will be an orange inflatable buoy.

## **10. AREAS THAT ARE OBSTRUCTIONS**

- 10.1 Boats may not pass between the Race Committee signal vessel and the Finish mark whilst the blue on-station flag is displayed, unless finishing.

## **11. THE START**

- 11.1 Races will be started by using RRS26 with the warning signal made five (5) minutes before the starting signal.
- 11.2 The starting line will be between a staff displaying an orange flag on the Race Committee signal vessel and the port- end start mark.
- 11.3 There may be a barging buoy (pink tear drop) off the stern of the Race Committee signal vessel.
- 11.4 A boat starting later than four (4) minutes after her starting signal will be scored Did Not Start without a hearing. This changes RRS 35, A4 and A5.

## **12. CHANGE OF THE NEXT LEG OF THE COURSE**

- 12.1 The Race Committee may change a leg of the course that begins at a rounding *mark* by changing the position of the next *mark* (or the finishing line) and signaling all boats before they begin the leg. The next *mark* need not be in position at that time.

## **13. THE FINISH**

- 13.1 The finishing line will be between a staff displaying a blue flag on the Race Committee signal vessel and the finish mark.

## **14. PENALTIES**

- 14.1 RRS 44.1 is changed so that the Two-Turns Penalty is replaced by the One-Turn Penalty.
- 14.2 A boat that has taken a penalty or retired under RRS 44.1 shall complete an acknowledgement form at the Sailing Office within the protest time limit.

- 14.3 Event Nominated Penalties shall be a 20% scoring penalty. This will not be grounds for a protest by a boat. This changes RRS 60.1(a). The scoring abbreviation for an Event Nominated Penalty under this instruction will be ENP. The penalty shall be applied to the race sailed nearest, in time to that of the breach. This changes RRS Rule 60, 60.2, A4 and A5.
- 14.4 The Protest Committee may award a Disqualification or a Scoring Penalty which may include no penalty. This changes RRS 64.2.

### 15. TIME LIMITS & TARGET TIMES

- 15.1 The target time for the first boat to complete the course is 60 minutes.
- 15.2 Failure to meet the target time will not be grounds for redress. This changes RRS 62.1(a).
- 15.3 Boats failing to finish within 20 minutes after the first boat sails the course and finishes may be scored their position on the course and is not subject to protest. This changes RRS 28, 35, 62.1 (a), A4 & A5.

### 16. PROTESTS AND REQUESTS FOR REDRESS

- 16.1 Boats intending to protest shall inform the Race Committee immediately after finishing the race by approaching the starboard side of the Race Committee signal vessel and hailing the protested boat's sail number. This changes RRS 61.1
- 16.2 Protest forms are available at the race office located at the Sailing Office. Protests and requests for redress or reopening shall be delivered there within the appropriate time limit.
- 16.3 The protest time limit is 90 minutes after the last boat has finished the last race of the day.
- 16.4 Notices will be posted no later than 30 minutes after the protest time limit to inform competitors of hearings in which they are parties or named as witnesses. Hearings will be held in the Hollywell Sailing Office beginning at the time posted.
- 16.5 Notices or protests by the Race Committee will be posted to inform boats under rule 61.1(b).
- 16.6 Breaches of Sailing Instruction's 17, 18, 19, 20 and 27 will not be grounds for protest by a boat. This changes rule 60.1(a). Penalties for these breaches will incur a 3-place scoring penalty. The scoring abbreviation for a discretionary penalty imposed under this instruction will be DPI.
- 16.7 On the last scheduled day of racing a request for reopening a hearing shall be delivered:
  - 16.7.1 within the protest time limit, if the requesting party was informed of the decision on the previous day:
  - 16.7.2 no later than 20 minutes after the requesting party was informed of the decision on that day. This changes RRS rule 66.
- 16.8 On the last scheduled day of racing a request for redress based on a Protest Committee decision shall be delivered no later than 20 minutes after the decision was posted. This changes RRS rule 62.2.

## **17. SCORING**

- 17.1 The Low Point Scoring System of Appendix A will apply.
- 17.2 Four (4) races are required to be completed to constitute a series.
- 17.3 If fewer than 5 races are sailed, then a boats series score will be the total of all her race scores.
- 17.4 When from five to eight races have been completed, a boat's series score will be the total of her race scores excluding her worst score.
- 17.5 If more than eight races are completed, a boat's series score will be the total of her race scores after discarding her two worst race scores.
- 17.6 There will be three Scoring Systems used in the Regatta:
  - 17.6.1 National Line Results (NLR) based on elapsed times.
  - 17.6.2 National Class TCF Results (TCF) for varying hull designs.
  - 17.6.3 Nationals Handicap Results using the Performance Handicap System (PHS) where the PHS may be adjusted after each race for each competitor. The starting Performance Handicap (PHS) Time Correction Factor (TCF) for each boat will be determined by the Handicap Committee. The decision of the Handicap Committee or the representative on any handicap matter will be final and will not be grounds for requests for redress. This alters RRS 60.1 (b).

## **18. SAFETY REGULATIONS**

- 18.1 Sign on and Sign off requirements are:
  - 18.1.1 All helmspersons shall sign on, on the sheets provided, prior to going afloat for racing.
  - 18.1.2 All helmspersons shall sign off within ninety (90) minutes after the last boat has finished the race of the day, or later at the discretion of the Race Committee.
- 18.2 The skipper of a boat that retires or does not intend to continue racing is required to notify an official Support Boat and await further instruction prior to returning to Clubhouse.

*Please Note: Failure to do so may result in a full safety alert with all Race Committee vessels and patrol boats remaining on course until the vessel is found.*
- 18.3 All Competitors are encouraged to carry a Harness Rescue Tool or similar device that is readily accessible in an emergency.

## **19. REPLACEMENT OF CREW OR EQUIPMENT**

- 19.1 Substitution of skippers and crews will not be allowed.
- 19.2 Substitution of damaged or lost equipment will not be allowed unless authorized by the Race Committee. Requests for substitution shall be made at the first reasonable opportunity.

## **20. EQUIPMENT AND MEASUREMENT CHECKS**

- 20.1 A National Measurer may spot check boats at any time during the Regatta. A boat notified of inspection shall follow the instructions of the National Measurer. The penalty for boats failing to measure in accordance with the rules will be to be scored DSQ in all races prior to the decision. This changes RRS 64.1.

## **21. OFFICIAL BOATS**

- 21.1 Official boats will be marked with the SYC burgee.

## **22. SUPPORT BOATS**

- 22.1 All Support and Coach boats shall register with the OA and complete on-site registration at the Southport Yacht Club Sailing Office. The coach boat registration fee will be \$20 per vessel.
- 22.2 All support boats must carry a working VHF radio able to be tuned to the channel specified by the Race Committee as well as be prepared to assist the Race Committee if requested to do so until cleared to leave the course area. Unless requested for assistance by the Race Committee all support boats shall remain at least 100 meters outside of the course area whilst boats are racing from the time of the preparatory signal for start until all boats have finished or retired or the Race Committee signals a postponement or abandonment.

## **23. TRASH DISPOSAL**

- 23.1 Boats shall not put trash in the water. Trash may be placed aboard support and Race Committee boats.

## **24. BERTHING**

- 24.1 Boats shall be kept in their assigned rigging and storage areas as directed by the Sailing Office.
- 24.2 Trailers shall be kept in their assigned area/s, which may include an unsecured open space area that is accessible to the public.

## **25. RADIO COMMUNICATION**

- 25.1 Except in an emergency, a boat shall neither make radio transmissions while racing nor receive radio communications not available to all boats. This restriction also applies to mobile telephones. Race control shall be using VHF09.

## **26. TRACKING DEVICES**

- 26.1 A boat shall carry a tracking device if so required by the OA. The device will be supplied by the OA.



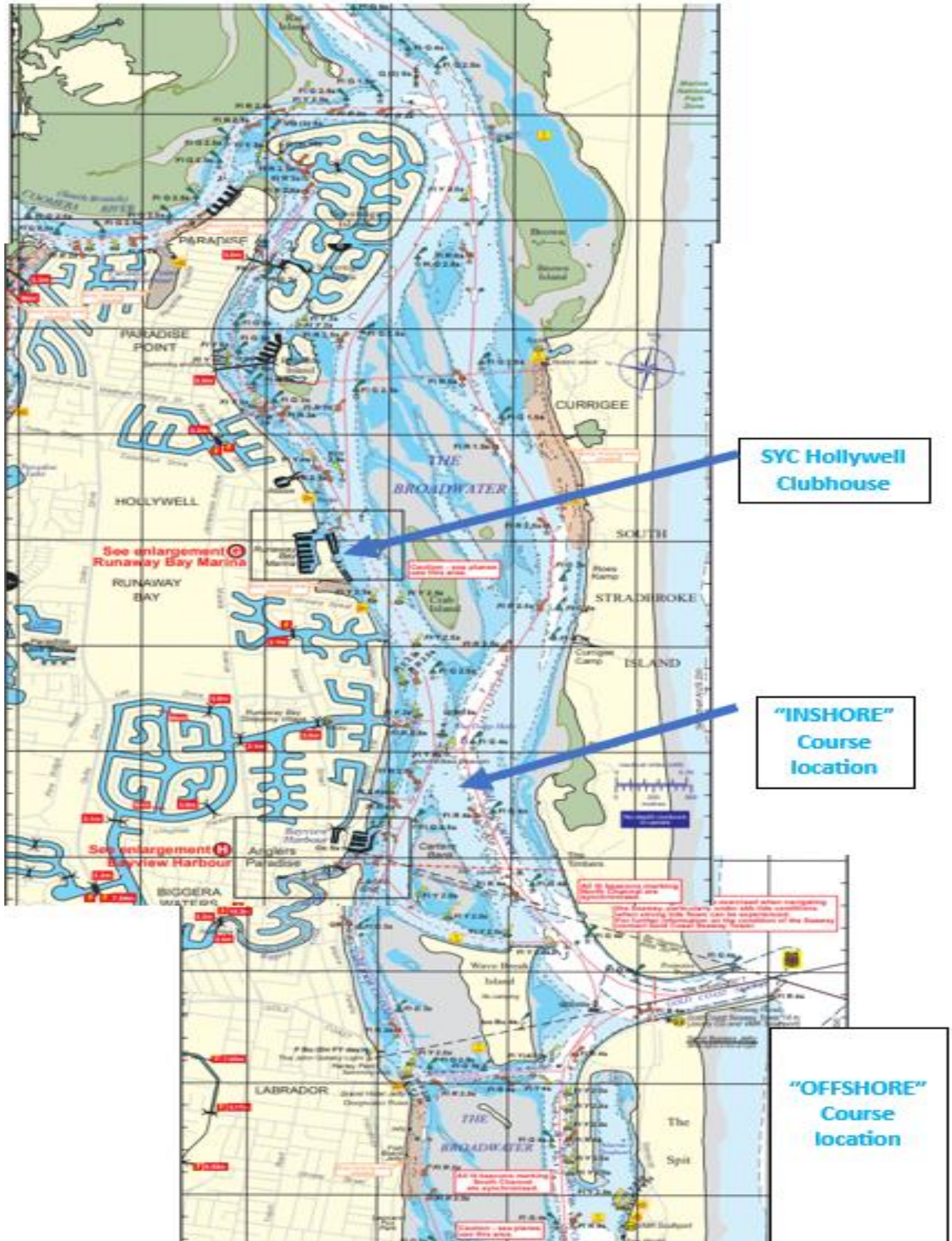
## **27. PRIZES**

- 27.1 Trophies and Prizes will be awarded for overall:
- a. National Line Results (NL) prizes awarded to 1<sup>st</sup>, 2<sup>nd</sup> & 3<sup>rd</sup> placings.
  - b. National Class TCF Results (TCF) prizes awarded to 1<sup>st</sup>, 2<sup>nd</sup> & 3<sup>rd</sup> placings.
  - c. Nationals Handicap Results (PHS) awarded to 1<sup>st</sup>, 2<sup>nd</sup> & 3<sup>rd</sup> placings.
  - d. Division 1 — boats built from 1996 till 2001 on NL Results.
  - e. Division 2 – boats built prior to 1996 on NL Results
  - f. Female Skipper — 1<sup>st</sup> Female Skipper on NL results.
  - g. Youth Skipper — 1<sup>st</sup> Skipper < 18 (as at 08/01/2024) based on NL results.
  - h. Veteran – Skipper and crew with a combined age of 110 years + based on NL results.
  - i. 150 Class – Combined Crew weight of 150+kg based on NL results.
  - j. Husband and Wife Trophy – 1<sup>st</sup> Husband and Wife crew on NL results
- 27.2 NL results prize winners are not eligible for TCF or PHS prizes.
- 27.3 TCF prize winners are not eligible for PHS prizes.
- 27.4 Other prizes may be awarded at the discretion of the OA.

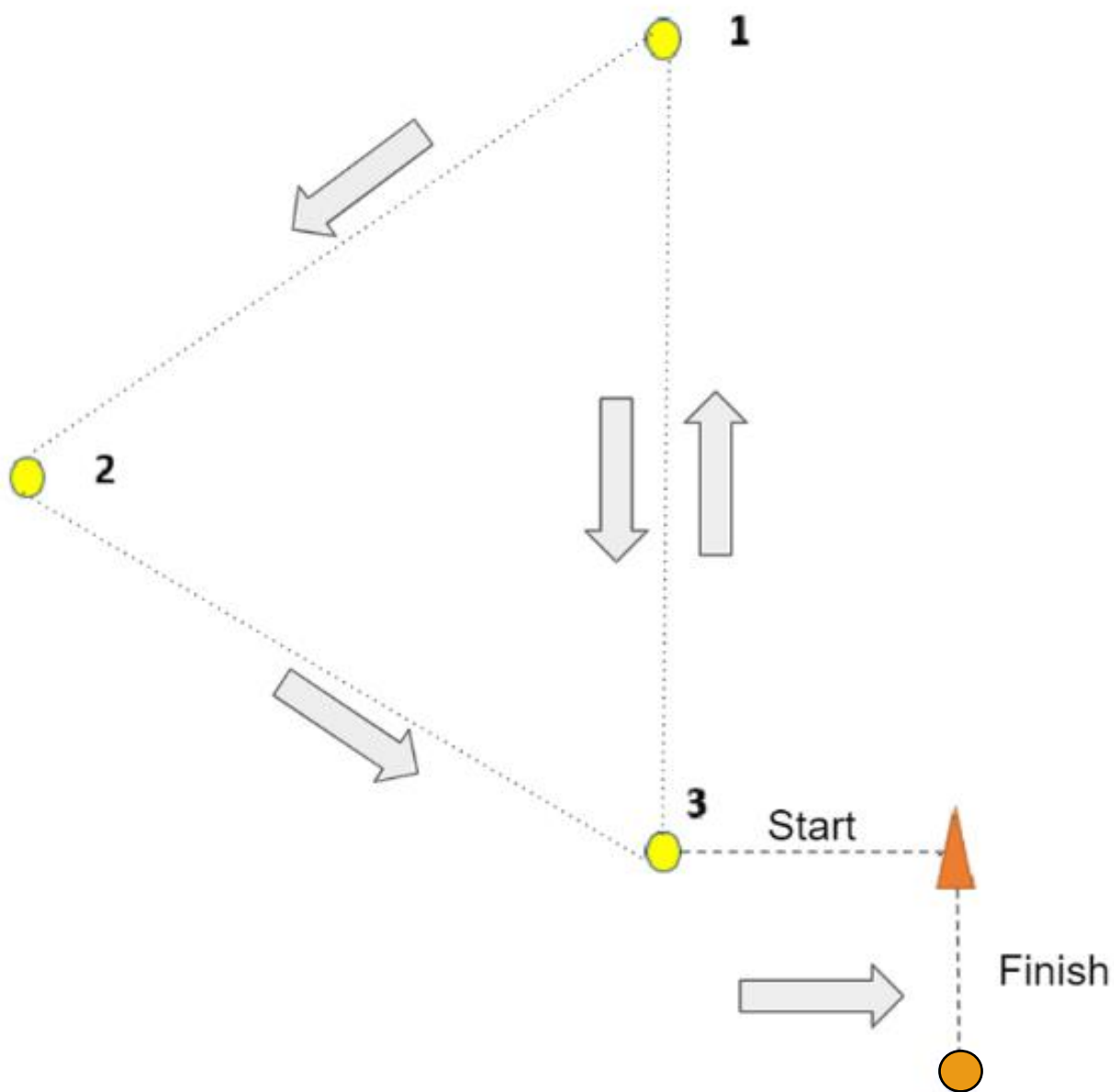
## **28. RISK STATEMENT**





- 28.1 Competitors participate in the Regatta entirely at their own risk - RRS 3 states: 'The responsibility for a boat's decision to participate in a race or to continue to race is hers alone.'
- 28.2 By participating in this event each competitor agrees and acknowledges that sailing is a potentially dangerous activity with inherent risks. These risks include strong winds and rough seas, sudden changes in weather, failure of equipment, boat handling errors, poor seamanship by other boats, loss of balance on an unstable platform and fatigue resulting in increased risk of injury. Inherent in the sport of sailing is the risk of permanent, catastrophic injury or death by drowning, trauma, hypothermia or other causes. The Organising Authority and Australian Sailing will not accept any liability for material damage or personal injury or death sustained in conjunction with or prior to, during, or after the event.

29. ADDENDUM A – RACING AREA/S



30. ADDENDUM B – THE COURSES



NUMERAL PENANT	MARK ROUNDINGS
1 	START – 1 – 2 – 3 – 1 – 3 – 1 – 2 – 3 – FINISH
2 	START – 1 – 2 – 3 – 1 – 3 – FINISH
3 	START - 1- 3 - FINISH
4 	As advised at Compulsory Skippers Briefing
All rounding marks are to be to <b>PORT</b>	

## **31. ADDENDUM C – SUPPORT PERSON REGULATIONS (SPRs)**

### **General**

- 31.1 These Support Person Regulations shall apply at all times while support persons are at the venue or on the water during the event period.
- 31.2 For the purposes of these regulations, a coach boat includes any boat that is under the control or direction of, or has on board, a person who is or may provide physical or advisory support to an athlete, including the gathering of data that may be used at a later time.
- 31.3 The Organizing Authority may inspect boats at any time to ensure that they comply with these regulations, and the person responsible for the boat shall facilitate such inspection.
- 31.4 An alleged breach of any of these regulations may be referred to the Protest Committee for a hearing. As a result of the hearing the Protest Committee may take action under RRS 64.4 or exclude the person from the event or venue or remove any privileges or benefits for a specified period or for the remainder of the competition. Note also, action may be taken under RRS 69.2.
- 31.5 The Organizing Authority may change these regulations at any time. Any changes will be posted on the Official Notice Board.
- 31.6 The Organizing Authority may, at its discretion, refuse to register coach boats not deemed to be suitable. Generally, open boats more than 4.0m and less than 7.5m in length and having minimal or no superstructure (cabin, coach house, bridge, etc.) are considered suitable.
- 31.7 All support persons shall be register at the Sailing Office by 18:00 on the day before the first race. Coach boats, designated drivers and support persons shall be registered at the Sailing Office either before leaving the venue by water for the first time or by 12:00 on the day before the first race of the Event that it is supporting, whichever is earlier.
- 31.7.1 Each boat shall be insured with valid third-party liability insurance with a minimum coverage of AUD \$10,000,000 (or equivalent) per incident.
- 31.7.2 Only accredited persons may be designated drivers.
- 31.7.3 The person registering the coach boat shall confirm that:
- (a) a valid insurance certificate showing proof of third-party liability coverage as required by 1.7.1 has been obtained;
  - (b) each designated driver has a powerboat driving license recognized by a national authority appropriate to that boat; and
  - (c) anyone who will be using a radio has an appropriate radio operation license recognized by a national authority.
- 31.8 Support person vessels shall be marked with a number provided by the Organizing Authority and shall be displayed at all times while afloat in accordance with NOR 15.1