



SOUTHPORT YACHT CLUB



Hansa 2.3



Hansa 303



Liberty

*SKUD 18*

## INTERNATIONAL HANSA CLASS ASIA PACIFIC CHAMPIONSHIPS 2024

Incorporating

AUSTRALIAN HANSA CLASS CHAMPIONSHIPS  
QUEENSLAND HANSA CLASS CHAMPIONSHIPS

20<sup>th</sup> October to 25<sup>th</sup> October 2024



# NOTICE OF RACE

GOLD COAST | AUSTRALIA



SOUTHPORT  
YACHT CLUB



2UA  
AUS  
2782  
2875

Glamour Boy

EAST COAST  
MARINE  
EXPO

Donated by Lori Bambrick and Family

**ORGANISING AUTHORITY**

Southport Yacht Club Inc  
1 Marina Crescent, Hollywell QLD 4217  
+617 5591 3500  
[southportyachtclub.com.au](http://southportyachtclub.com.au)



## TABLE OF CONTENTS

1. RULES .....	4
2. Sailing Instructions .....	4
3. Communication .....	4
4. Eligibility and Entry .....	5
5. Classification .....	5
6. Fees .....	6
7. Charter Boat FEES .....	7
8. Advertising .....	7
9. Schedule .....	7
10. Equipment Inspection .....	8
11. Venue .....	9
12. Courses .....	9
13. Penalty System .....	9
14. International Jury .....	9
15. Scoring .....	9
16. Support Boats & Safety .....	9
17. Chartered or Loaned Boats .....	10
18. Berthing .....	10
19. Diving Equipment & Plastic Pools .....	10
20. Risk Statement & Disclaimer of Liability .....	10
21. Insurance .....	10
22. Prizes .....	11
26. Further Information .....	11
27. ADDENDUM – MAPS .....	12

**Notations:**

*[SP]* denotes a rule for which a standard penalty may be applied by the race committee or the technical committee without a hearing or a discretionary penalty applied by the jury with a hearing. This changes RRS 63.1 and A5.

*[NP]* denotes a rule that shall not be grounds for protests by a boat. This changes RRS 60.1 (a).

*[DP]* denotes a rule for which the penalty is at the discretion of the Jury and may be less than disqualification. This changes RRS 64.1.

**1. RULES**

- 1.1 The Regatta will be governed by the rules as defined in [2021-2024 Racing Rules of Sailing \(RRS\)](#).
- 1.2 The current International Hansa Class Rules for each class will apply.
- 1.3
  - (a) The prescriptions of the National Authority will apply.
  - (b) The SKUD 18 will be sailed as per Class Rule J.1- SKUD 18.2. Two crew can hike or if one sits in a centreline seat, one can trapeze.
- 1.4 Racing rules 35, 61.3, 62.2, 66, A4 & A5 preamble of Part 4 is changed as follows: -
  - a) RRS 44.1 and RRS P2.1 are changed as follows: Two-Turns Penalty is replaced by the One-Turn Penalty.
  - b) RRS 61.1(a) Informing the Protested is changed: "the hail 'Protest' is not required but should be made where possible. The protesting boat doesn't need to display a red flag".
  - c) RRS 63.3(a) Protest Hearing is changed: "a boat representative at a protest hearing need not have been on board at the time of the incident".
- 1.5 Liberty Class Rule C.2.3 Sailor Weight Equalisation shall apply.
- 1.6 World Anti-Doping Code Regulations will apply. Competitors are reminded of the World Sailing Rules and Regulations concerning the use of banned methods and substances, which are contained, in the World Sailing Anti-Doping Code. Drug testing may take place during this event. Additional information is available at <https://www.wada-ama.org>.
- 1.7 The Organising Authority may amend this Notice of Race. Amendments made prior to October 1, 2024, will be published on the Event Website. Amendments thereafter shall be posted on the Official Notice Board
- 1.8 If there is a conflict between languages the English text will take precedence.

**2. SAILING INSTRUCTIONS**

The Sailing Instructions will be available after 10<sup>th</sup> October 2024 on the Event Website [www.southportyachtclub.com.au](http://www.southportyachtclub.com.au) and will be displayed on the Official Notice Board. A printed copy will be provided to competitors at registration.

**3. COMMUNICATION**

- 3.1 The Official Notice Board is located on the Southern wall of the Club house at Hollywell.
- 3.2 As a service to competitors, a digital version of the Official Notice Board will be made available on the Event Website: [www.southportyachtclub.com.au](http://www.southportyachtclub.com.au)
- 3.3 [DP] While racing, except in an emergency, a boat shall not make voice or data transmissions and shall not receive voice or data communication that is not available to all boats. This restriction also applies to mobile telephones.



## 4. ELIGIBILITY AND ENTRY

- 4.1 The event is open to all boats of the following classes: -
- Hansa 2.3/Hansa 2.3 Servo Single-Person.
  - Hansa 303 Single-Person.
  - Hansa 303 Two-Person.
  - Liberty/Liberty Servo.
  - Skud 18.
- 4.2 The event is open to competitors who are current financial members of their National Hansa Class Association or the International Hansa Class Association.
- 4.3 Eligible boats may enter by completing the electronic Entry Form, on the Event Website [www.southportyachtclub.com.au](http://www.southportyachtclub.com.au) and paying required fees by Midnight 1<sup>st</sup> October, 2024.
- 4.4 Late entries will be accepted.
- 4.5 The following restrictions on the number of boats apply: -
- a) For all classes, the minimum number of entries required for a division to be valid is eight (8) boats.
  - b) For servo classes, the minimum number of entries required for a division to be valid is three (3) boats.
  - c) Where the number of entries for any one division does not meet the minimum number by the entry closing date, that division will be combined with another compatible division. Should either Servo divisions not reach the required minimum number, boats of that class would only be eligible for prizes in the Open class.
- 4.6 Entry for vision impaired sailors will be restricted to category IBSA B2 or B3 sailors in the single person divisions. Blind and Vision impaired sailors of any category may compete in the two-person divisions with a sighted crew member.
- 4.7 The Hansa 2.3 Single and Wide will be crewed by one person.
- 4.8 The Hansa 2.3 Servo and Liberty Servo entries will sail and be scored as part of their respective open fleets.
- 4.9 To be eligible for the Servo Championships, the helm and all sheets must be controlled by servo electric equipment. Partial servo boats are deemed to be manual.
- 4.10 Competitors (each crew member) shall present during registration:
- a) Their valid MNA sailing license (if applicable by their local MNA).
  - b) A parental authorisation for persons aged less than 18 years of age.
  - c) Proof of Hansa Class membership.
  - d) If necessary, authorisation to display personal advertising on the boat.
  - e) Valid proof of insurance.

## 5. CLASSIFICATION

World Sailing classification requirements will not apply, except IBSA Classification as in 4.6 above relating to vision impairment.



## 6. FEES

- 6.1 A competitor may enter a single person class and a two-person class. Entry fees are in Australian Dollars (AUD \$) are as follows: -

Class	Early Bird Fee to Midnight May 31st
2.3 single	\$275.00
303 single	\$275.00
303 two-person	\$375.00
Liberty	\$275.00
Skud 18	\$375.00

Class	Entry Fee Prior to June 30	Late Entry Fee From July 1st	Additional Class
2.3 single	\$300.00	\$400.00	\$110.00
303 single	\$300.00	\$400.00	\$110.00
303 two-person	\$400.00	\$500.00	\$110.00
Liberty	\$300.00	\$400.00	\$110.00
Skud 18	\$400.00	\$500.00	\$110.00

- 6.2 If the skipper of a two-person boat is also sailing in a single-person division then the skipper needs only to complete one entry form. They need to pay **\$400.00** - for the two-person division (covers both skipper and crew) and an additional **\$110.00** - for the single-person division.
- 6.3 If the crew of a two-person boat is also going to skipper a different single-person boat, then the crew needs to fill in a separate entry form. In this case they only need to pay an extra **\$110.00**.
- 6.4 The race committee will make every attempt to schedule single-person races at different times to two-person races, to allow competitors to compete in more than one class. However, the race committee may change this scheduling in the event of adverse weather conditions.
- 6.5 The Entry Fee will include Opening and Closing Ceremony events.
- 6.6 Coaches must also register. Coaches registration fee of **\$110.00** will include Opening and Closing Ceremony events.
- 6.7 Dinner tickets for non-competitors, helpers or guests may be purchased for **\$50.00**. [Please mark additional tickets on the entry form.](#)



## 7. CHARTER BOAT FEES

- 7.1 A number of boats will be available for charter.
- 7.2 A \$300 damage deposit will be required. If no damage is incurred by the chartered boat, this deposit will be refunded. Any cost for any damage incurred will be paid from this deposit to the charterer.
- 7.3 Charter fees are as follow:

Class	Fee (AUD)	Damage Deposit
Hansa 2.3 Single *	\$110	\$300
Hansa 303 Wide	\$160	\$300
Hansa Liberty *	\$500	\$300
Hansa Liberty Servo *	\$500	\$300

**\*\*Please refer to Point 17 for further details**

## 8. ADVERTISING

- 8.1 In accordance with WS Regulation 20 (advertising code), boats may be required to display advertising chosen and supplied by the organising authority.

## 9. SCHEDULE

- 9.1 Registration: -

Date	From	To	Venue
Sunday 20 <sup>th</sup> October 2024	09:00	14:00	Race Office

- 9.2 Equipment inspection and event measurement & Hansa Annual General Meeting-

Date	From	To	Venue
Sunday 20 <sup>th</sup> October 2024	09:00	14:00	Technical Area
	14:00	15:00	Annual General Meeting

- 9.3 A compulsory competitor briefing will be held on at 08:30am each day prior to racing.



## 9.4 Dates of racing: -

Date	1st Warning Signal	Class	Event
Monday 21 <sup>st</sup> Oct 2024	12:55	Liberty & 303 Double	Qualification or Series
	09:55	303 Single & Hansa 2.3	Qualification or Series
		Skud 18	
Tuesday 22 <sup>nd</sup> Oct 24	09:55	303 Single & Hansa 2.3	Qualification or Series
		Liberty & 303 Double	Qualification or Series
	12:55	Skud 18	
Wednesday 23 <sup>rd</sup> Oct 2024	12:55	Liberty & 303 Double	Qualification or Series
		303 Single & Hansa 2.3	Qualification or Series
	09:55	Skud 18	
	18:00	Asia Pacific Championships Dinner	
Thursday 24 <sup>th</sup> Oct 2024	09:55	303 Single & Hansa 2.3	Final Series
		Liberty & 303 Double	Final Series
	12:55	Skud 18	
Friday 25 <sup>th</sup> Oct 2024	12:55	Liberty & 303 Double	Final Series
		303 Single & Hansa 2.3	Final Series
	09:55	Skud 18	
			Presentation

- 9.5 Two races are scheduled for each session, with subsequent races starting as soon as possible after the end of the preceding race. At the discretion of the Race Committee, an additional (3<sup>rd</sup>) race may be sailed.
- 9.6 A maximum of 10 races are scheduled for each class.
- 9.7 No warning signal shall be given on racing days before 09:55 and after 16:00. On the last scheduled day of racing no warning signal shall be given before 09:55 and after 15:00.
- 9.8 The Race Committee reserves the right to change the racing schedule during the championship. The changes will be posted by 20:00 on the Official Notice Board the day before any race(s) concerned.

## 10. EQUIPMENT INSPECTION

- 10.1 [DP] Boats, including chartered boats, shall be made available for equipment inspection as per NOR 9.2. Boats will be inspected in accordance with IHCA Equipment Regulations.
- 10.2 Boats may be inspected at any time.
- 10.3 Sails shall be marked in accordance with the current class rules, except that older sails with the class emblem at the clew corner will be permitted. Sails with 100mm high sail numbers will NOT be permitted.
- 10.4 Sails used on other chartered boats shall comply with RRS G3. The sail numbers on competitor's own sails does not need to reflect any particular owned boat. If there is the possibility of confusion between sail identification in a particular class, the event Chief Equipment Inspector shall direct what additional numbers are to be added to the sail. The provision of such additional number shall be at the competitor's expense.
- 10.5 All Liberty sailors will be weighed with all equipment for Sailor Weight Equalisation.





## 11. VENUE

- 11.1 NoR Addendum A shows the plan of the event venue.
- 11.2 NoR Addendum B shows the location of the racing area.

## 12. COURSES

- 12.1 Courses will be either Windward/Leeward or Trapezoid as detailed in the Sailing Instructions.

## 13. PENALTY SYSTEM

- 13.1 For all classes RRS 44.1 is changed so that the Two-Turns Penalty is replaced by the One-Turn Penalty.
- 13.2 Appendix P will apply except that all penalties shall be One-Turn Penalty.
- 13.3 Jury may use Discretionary Penalties.

## 14. INTERNATIONAL JURY

- 14.1 An International Jury will be appointed in accordance with RRS 91(b). Its decisions will be final as provided in RRS 70.5.

## 15. SCORING

- 15.1 Four (4) races are required to be completed to constitute a series.
- 15.2 When four (4) races have been completed, a boat's series score will be the total of her race scores.
- 15.3 When more than four (4) races have been completed, a boat's series score will be the total of her race scores excluding her worst score.
- 15.4 RRS 90.3 will be applied.

## 16. SUPPORT BOATS & SAFETY

- 16.1 Coaches, helpers, team leaders and support personnel that are bringing RIBs or other non-racing vessels are requested to register the boats and will be required to comply with local legislation.
- 16.2 [DP] Support boats with team leaders, coaches and other support personnel shall stay outside areas where boats are racing from the time of the preparatory signal for the first fleet to start until all boats have finished or the race committee signals a postponement, general recall or abandonment.
- 16.3 [DP] Support boats shall be marked with a flag or decal not less than 200mm x 300mm bearing the national letters or national flag, and visible from both sides of the boat.
- 16.4 Competitors requiring hoisting in and out of their boats shall provide their own sling which must be appropriate for their size and weight.
- 16.5 Competitors, their supporters and event officials shall always provide and wear an approved buoyancy aid or life jacket of an appropriate buoyancy level and standard in relation to the individual's size and capabilities whilst afloat or on pontoons. There are no restrictions for the use of auto-inflating Personal Flotation Devices.



## 17. CHARTERED OR LOANED BOATS

- 17.1 A limited number of boats will be available for charter. Details are available on the Event Website or direct from Sailability Gold Coast by contacting the Hansa Qld State Representative, Neil Rowsthorn on 0490 545 477 - [neil.rowsthorn1@gmail.com](mailto:neil.rowsthorn1@gmail.com) . Boats will be allocated on a first-come first-served basis.
- 17.2 [DP] Chartered boats shall not be modified in any way except that a compass may be tied or taped to the hull or spars and wind indicators, including yarn or thread may be tied or taped anywhere on the boat.
- 17.3 [DP] Any additional equipment shall have a class approved RAE issued prior to the first day of racing and may be used providing those attachments do not puncture and are not bonded to the surface of the boat. Without the written approval of the Technical Committee, no alteration shall be made to any part of the boat, its equipment spars or fittings, or fittings removed even if subsequently replaced.
- 17.4 Competitors shall report any damage or loss of equipment to chartered boats, however slight, to the Technical Committee immediately after securing the boat ashore. The penalty for breaking this instruction will be disqualification from the race most recently sailed unless the protest committee is satisfied that the competitor has made a determined effort to comply.
- 17.5 Failure of equipment on a chartered boat will not be grounds for redress. This changes RRS 60.1(b).

## 18. BERTHING

- 18.1 [DP] Boats shall be kept in their assigned places on moorings/marina or in the designated boat park.

## 19. DIVING EQUIPMENT & PLASTIC POOLS

- 19.1 Underwater breathing apparatus and plastic pools or their equivalent shall not be used around boats between the preparatory signal of the first race and the end of the event.
- 19.2 Boats shall not be cleaned below the waterline by any means during the event.

## 20. RISK STATEMENT & DISCLAIMER OF LIABILITY

Competitors participate in the event entirely at their own risk. See RRS 4, Decision to Race. The Organising Authority will not accept any liability for material damage or personal injury, or death sustained in conjunction with or prior to, during, or after the event.

Competitors are entirely responsible for their own safety, whether afloat or ashore, and nothing, whether in the Notice of Race or Sailing Instructions or anywhere else reduces this responsibility. It is for the competitor to decide whether they are fit to sail in the conditions in which they will find themselves. By launching or going to sea, a competitor confirms that their boat is fit for those conditions, and they are competent to sail and compete in them. Nothing done by the Organizers can reduce the responsibility of the competitors nor will it make the Organizers responsible for any loss, damage, death, or personal injury, however it may have occurred, as a result of the boat taking part in the racing. The Organizers encompass everyone helping to run the race and the event and include the Organising Authority, the race committee, the race officer, patrol boats and Beachmasters. The provision of patrol boats does not relieve competitors of their responsibilities.

## 21. INSURANCE

Each participating boat shall be insured with valid third-party liability insurance with a minimum cover of Ten Million AUS Dollars per incident or the equivalent. A valid proof of insurance should be presented at registration.



## 22. PRIZES

Prizes will be awarded in the following divisions:

- Hansa 2.3 Single-Person **Queensland** Champion.
- Hansa 303 Single-Person **Queensland** Champion.
- Hansa 303 Two-Person **Queensland** Champions.
- Liberty **Queensland** Champion
- Skud 18 **Queensland** Champion
- Hansa 2.3 Single-Person **Australian** Champion.
- Hansa 303 Single-Person **Australian** Champion.
- Hansa 303 Two-Person **Australian** Champions.
- Liberty **Australian** Champion
- Skud 18 **Australian** Champion
- Hansa 2.3 Single-Person **Asia Pacific** Champion.
- Hansa 303 Single-Person **Asia-Pacific** Champion.
- Hansa 303 Two-Person **Asia-Pacific** Champions.
- Liberty **Asia-Pacific** Champion
- Skud 18 **Asia-Pacific** Champion

Special awards: -

Nation Teams Trophy.

President's Trophy

Other prizes may be awarded at the discretion of the Organising Authority.

## 26. FURTHER INFORMATION

For further information, please contact the OA via email: - [www.sailing.reception@sycgc.com.au](mailto:www.sailing.reception@sycgc.com.au) or telephone +61 7 5537 7030

Competitors are advised to regularly check the Event Website for updates and notices as it may not be practical to contact every entered or potential competitor.

<https://hansaregionals.org/asia-pacific/>



## 27. ADDENDUM – MAPS



**TRAILER PARKING**

**LAWN RIGGING AREA**

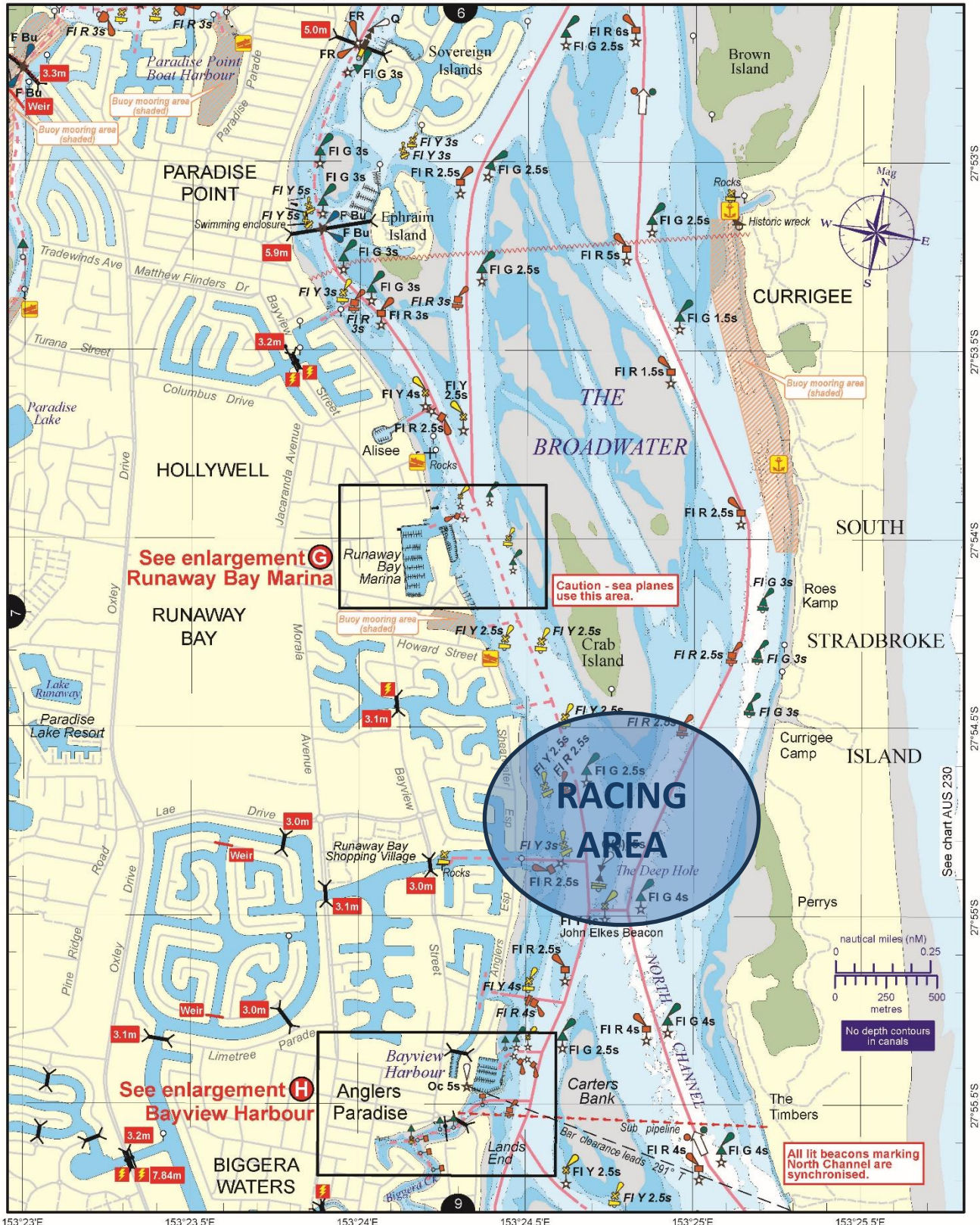
**SYC HOLLYWELL  
BAR & BISTRO**



VMR Southport: base phone 5591 1300, 24 hrs 7 days, 27MHz 86 88 91, VHF 16 22 67 73 82, MF/HF 2182 2524 4125 4483.

CG Southport: base phone 5531 1421, Mon-Thu 0800-1800, 24 hrs w/e (Fri 0800-Sun 1800), 27MHz 91 88 86, VHF 73 21 22 67 81 82 16, MF/HF 2524.

# NGC-8



See enlargement **G**  
Runaway Bay Marina

See enlargement **H**  
Bayview Harbour

Caution - sea planes  
use this area.

**RACING AREA**

All lit beacons marking  
North Channel are  
synchronised.

Always keep a proper lookout when boating. Nautical information current to 6 July 2020

**Look up and live** for power and cable crossings that may not be shown on these maps due to scale or recent construction.

For depth contour date information, refer to the Key Sheet for this guide. Note that depths may change following floods.

**Exercise care when travelling outside suggested navigation tracks.**

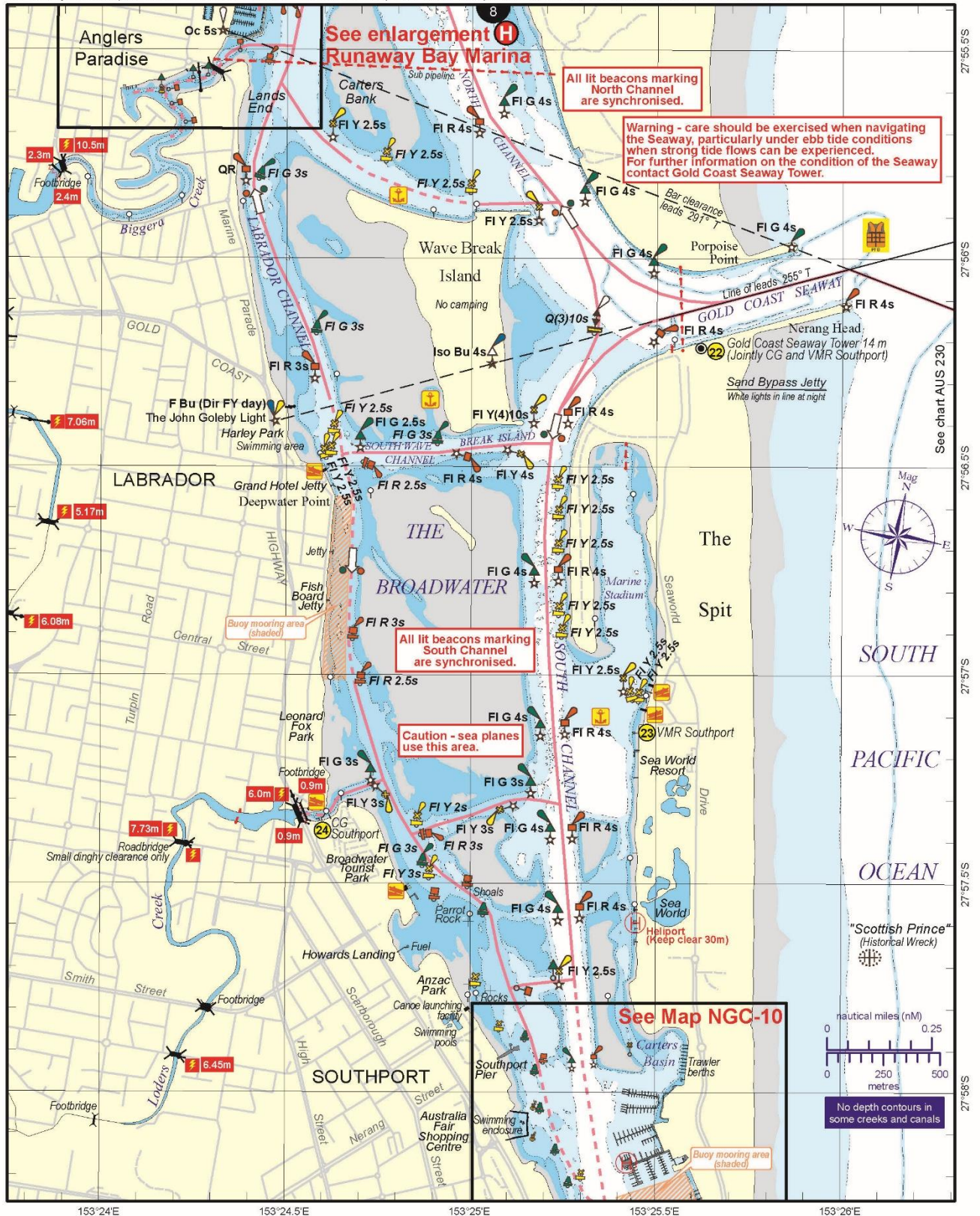
© Copyright The State of Queensland 2020  
Queensland Department of Transport and Main Roads - Maritime Safety Queensland.  
To reproduce any map within this series, see terms and conditions at Maritime Safety Queensland's website ([www.msg.qld.gov.au](http://www.msg.qld.gov.au))



VMR Southport: base phone 5591 1300, 24 hrs 7 days, 27MHz 86 88 91, VHF 16 22 67 73 82, MF/HF 2182 2524 4125 4483.

CG Southport: base phone 5531 1421, Mon-Thu 0800-1800, 24 hrs w/e (Fri 0800-Sun 1800), 27MHz 91 88 86, VHF 73 21 22 67 81 82 16, MF/HF 2524.

NGC-9



Always keep a proper lookout when boating.  
**Look up and live** for power and cable crossings that may not be shown on these maps due to scale or recent construction.  
 For depth contour date information, refer to the Key Sheet for this guide. Note that depths may change following floods.  
**Exercise care when travelling outside suggested navigation tracks.**

Nautical information current to 6 July 2020

© Copyright The State of Queensland 2020  
 Queensland Department of Transport and Main Roads - Maritime Safety Queensland.  
 To reproduce any map within this series, see terms and conditions at Maritime Safety Queensland's website ([www.msg.qld.gov.au](http://www.msg.qld.gov.au))

