



SOUTHPORT YACHT CLUB

SAILING INSTRUCTIONS

INSHORE DIVISION
2024 - 2025



RACE SCHEDULE

ID – INSHORE DIVISION SCHEDULE – 2024/2025	
Brass Monkey 1/14	Wednesday 1 st May
Winter Passage 1/10	Saturday 4 th May
Brass Monkey 2/14	Wednesday 8 th May
Winter Passage 2/10	Saturday 11 th May
Brass Monkey 3/14	Wednesday 15 th May
Winter Passage 3/10	Saturday 18 th May
Brass Monkey 4/14	Wednesday 22 nd May
Winter Passage 4/10	Saturday 25 th May
Brass Monkey 5/14	Wednesday 29 th May
Winter Passage 5/10	Saturday 1 st June
Brass Monkey 6/14	Wednesday 5 th June
Brass Monkey 7/14	Wednesday 12 th June
Winter Passage 6/10	Saturday 15 th June
Brass Monkey 8/14	Wednesday 9 th June
Brass Monkey 9/14	Wednesday 26 th June
Winter Passage 7/10	Saturday 29 th June
Brass Monkey 10/14	Wednesday 3 rd July
Winter Passage 18/10	Saturday 6 th July
Brass Monkey 11/14	Wednesday 10 th July
Brass Monkey 12/14	Wednesday 17 th July
Brass Monkey 13/14	Wednesday 24 th July
Winter Passage 9/10	Saturday 24 th August
Brass Monkey 14/14	Wednesday 28 th August
Winter Passage 10/10	Saturday 7 th September
ID - JaM 1/13 (Jeff Thorpe Memorial)	Wednesday 18 th September
ID – RTC 1/14	Wednesday 25 th September
ID – Passage 1/10	Saturday 28 th September
ID – JaM 2/13	Wednesday 2 nd October
ID – RTC 2/14	Wednesday 9 th October
ID – JaM 3/13	Wednesday 16 th October
ID – RTC 3/14	Wednesday 30 th October
ID – Passage 2/10	Saturday 2 nd November
ID – JaM 4/13	Wednesday 6 th November
ID – Summer RTC 1/6	Saturday 9 th November
ID – RTC 4/14	Wednesday 13 th November
ID – Passage 3/10	Saturday 16 th November



ID – JaM 5/13	Wednesday 20 th November
ID – RTC 5/14	Wednesday 27 th November
ID – Summer RTC 2/6	Saturday 30 th November
ID – JaM 6/13	Wednesday 4 th December
ID – Passage 4/10	Saturday 7 th December
ID – RTC 6/14	Wednesday 11 th December
ID – Summer RTC 3/6	Saturday 14 th December
ID – XMAS	Wednesday 18 th December
ID – RTC 7/14	Wednesday 8 th January
ID – JaM 7/13	Wednesday 15 th January
ID – Passage 5/10	Saturday 18 th January
ID – RTC 8/14	Wednesday 22 nd January
ID – JaM 8/13	Wednesday 29 th January
ID – Passage 6/10	Saturday 1 st February
ID – RTC 9/14	Wednesday 5 th February
ID – JaM 9/13	Wednesday 12 th February
ID – Summer RTC 4/6	Saturday 15 th February
ID – RTC 10/14	Wednesday 19 th February
ID – Passage 7/10	Saturday 22 nd February
ID – JaM 10/13	Wednesday 26 th February
ID – Summer RTC 5/6	Saturday 1 st March
ID – RTC 11/14	Wednesday 5 th March
ID – JaM 11/13	Wednesday 12 th March
ID – Summer RTC 6/6	Saturday 15 th March
ID – RTC 12/14	Wednesday 19 th March
ID – Passage 8/10	Saturday 22 nd March
ID – JAM 12/13	Wednesday 26 th March
ID – RTC 13/14	Wednesday 2 nd April
ID – Passage 9/10	Wednesday 5 th April
ID – JaM 13/13	Wednesday 9 th April
ID – Passage 10/10	Saturday 12 th April
ID – RTC 14/14	Wednesday 16 th April

INSHORE DIVISION SERIES FEES



BLOCK WHOLE SEASON DISCOUNT (67 Races)	\$680.00
BRASS MONKEY (14 Races)	\$150.00
WINTER SERIES (10 Races)	\$120.00
SUMMER SERIES – Passage (10 Races)	\$170.00
SUMMER SERIES – RTC (6 Races)	\$240.00
WEDNESDAY JAM SERIES (13 Races)	\$150.00
WEDNESDAY RTC SERIES (14 Races)	\$280.00
Casual Race Entry (per race day)	\$20.00 <i>SYC Member</i> \$30.00 <i>Non Member (max entry 3)</i>

ADDITIONAL SYC SPECIAL EVENTS

<i>Event / Regatta Name</i>	<i>Date</i>
CRAB ISLAND CLASSIC	Saturday 13 th July 2024
GCCM GOLD COAST MACKAY YACHT RACE	Thursday 1 st August 2024
SAIL PAST & BLESSING THE FLEET	Saturday 14 th September 2024
BREAKING OF THE FLAG CEREMONY & DASH 4 CASH	Sunday 15 th September 2024
THE YACHT SALES CO. SAIL PARADISE REGATTA	Saturday 5 th to Monday 7 th October 2024
BURLEIGH BASH	Sunday 27 th October 2024
TED ELKES MEMORIAL REGATTA	Saturday 25 th & Sunday 26 th January 2025
TWO HANDED RACE	Saturday 8 th March 2025
DUX BIRTHDAY CELEBRATIONS	Sunday 30 th March 2025
LADIES DAY RACE	Saturday 26 th April 2025



SAILING COMMITTEE DIVISIONAL REPRESENTATIVES

SYC Vice Commodore of Sail:

Glenn Burrell 0411 422 232

glenn@aquaticelements.com.au

SYC Sailing Officer:

Steven Murphy 0475 434 800

sailing.officer@sycgc.com.au

OD - Offshore Division Representative:

Barry Berg 0400 110 555

barry.wildstyle@gmail.com

TT – Thursday Twilight Division Representative:

Peter Karlovic 0400 391 561

sailorpk@outlook.com

ID – Inshore Division Representative:

Wayne Kirby 0418 950 250

wayne@kirbyfamily.id.au

OTBC – Off the Beach Catamaran Division Representative:

David Chester 0431 316 574

david_chester202@hotmail.com

OTBD – Off the Beach Dinghy Division Representative:

Stuart Waters 0400 155 600

stuartwaters@live.com.au

HC – Handicap Committee Representatives:

Russell Birse, Colin Metcher.

sailing.reception@sycgc.com.au



RACE SCHEDULE	2
1. RULES.....	7
2. ELIGIBILITY.....	7
3. COMMUNICATION	7
4. CHANGES TO SAILING INSTRUCTIONS	8
5. SIGNALS MADE ASHORE.....	8
6. SCHEDULE OF RACES	8
7. SAIL RESTRICTIONS	8
8. RACING AREA.....	9
9. CLASS FLAGS.....	9
10. COURSES.....	9
11. MARKS	9
12. AREAS THAT ARE OBSTRUCTIONS	10
13. THE STARTS	10
14. CHANGE OF THE NEXT LEG OF THE COURSE.....	11
15. SHORTENED COURSE.....	11
16. THE FINISH.....	12
17. PENALTY SYSTEM.....	12
18. TIME LIMITS.....	12
19. PROTESTS	13
20. SCORING	13
21. SAFETY REGULATIONS	14
22. REPLACEMENT, SUBS OR MODIFICATION OF CREW OR EQUIPMENT.....	14
23. EQUIPMENT AND MEASUREMENT CHECKS	14
24. OFFICIAL BOATS.....	15
25. SUPPORT TEAMS	15
26. RUBBISH DISPOSAL.....	15
27. RACE PRIZES.....	15
28. DISCLAIMER OF LIABILITY.....	15
29. INSURANCE.....	16
30. MEDIA RIGHTS.....	16
31. FURTHER INFORMATION	16
ATTACHMENT A - Approximate Racing Area	17
ATTACHMENT B - Approximate location for RTC Courses	18
ATTACHMENT C - Buoys / Marks & Courses	19
ATTACHMENT D - ID PASSAGE DIAGRAM	21
ATTACHMENT E - ID ROUND THE CANS SERIES (RTC) DIAGRAM	22
ATTACHMENT F - DECLARATION	23
PARENTAL CONSENT & INDEMNITY FORM	24



1. RULES

- 1.1. The Organising Authority (OA) is Southport Yacht Club Inc.
- 1.2. Races will be governed by the current rules as defined in the Racing Rules of Sailing (RRS) and the Prescriptions of Australian Sailing (AS).
- 1.3. A minimum of five (5) participants are required to constitute a race. If there are less than the required amount the race shall be abandoned.
- 1.4. All boats shall comply with AS Special Regulations (SR): Part 1 – Category7 *Plus* (*Additional items required by the OA*).
- 1.5. All boats shall supply at time of entry a current AS SR Equipment Audit Form Category 7 Plus (or higher) that has been certified by an approved AS Club / National Equipment Auditor. AS SR Equipment Audit forms are available from the OA website.
- 1.6. All boats shall comply with the Transport Operations (Marine Safety) Act 1994 and Regulation. In the event of a reportable Marine Incident the SYC Sailing Officer is to be notified as soon as practical; but no later than 1 hour after the last boat has finished, a copy of the MSQ Marine Incident Report is required to be lodged with the OA at the same time it is lodged with Maritime Safety Queensland.
- 1.7. The *International Regulations for the Prevention of Collisions at Sea 1972* (COLREGS) shall apply at all times. The *Racing Rules of Sailing* (RRS) will apply only between those ships that are participating in the event, for the duration of the event. Should interaction occur with non-participating ships, then COLREGS shall apply to all ships and shall over-ride all other rules. This is a condition governed by local Statutory Authorities for the OA's approved Aquatic Event Permit.
- 1.8. RRS Appendix T – Arbitration applies.
- 1.9. Compliance with SYC's current Sailing Season Policy.
- 1.10. For all competitors competing in a one-design class championships, they must comply with their Class Association rules.
- 1.11. All competitors are reminded of RRS 1.1 Helping Those in Danger; A boat, competitor or support person shall give all possible help to any person or vessel in danger.

2. ELIGIBILITY

- 2.1 Off the Beach classes are not permitted to sail in Inshore Races.
- 2.2 All boats must be entered to race via the SYC Top Yacht System. Competitors shall ensure that the correct details are included in the entry including a valid email address and the name of the skipper.

3. COMMUNICATION

- 3.1 On each SUMMER RTC race day and each Wednesday Twilight RTC day before 1100hrs, the OA shall email the "Primary Contact Person" of each boat, a "SYC Inshore Division Briefing & Communication Notice" which will include the location of the course.



- 3.2 On the water, the Race Committee intends to monitor and communicate with competitors on VHF09 radio channel.
- 3.3 When Course 8 is selected by the OA, the details of the course shall be advised at the briefing for Saturday races. On Twilight race days where there is no briefing the course number 8 will be displayed on the Tower and the Race Officer will broadcast the race course details over the radio.

4. CHANGES TO SAILING INSTRUCTIONS

- 4.1 Changes to Sailing Instructions will be posted on the Official Notice Board and will be emailed to competitors not less than sixty (60) minutes before the scheduled start time of the first race of the day, except that any change to the schedule of races will be posted by 1800 hours on the day before it will take effect.

5. SIGNALS MADE ASHORE

- 5.1 Signals made ashore will be displayed on the official flagpole located on the Southern Grass of the SYC Hollywell clubhouse.
- 5.2 When flag AP is displayed ashore, '1 minute' is replaced with 'not less than 30 minutes' in the race signal AP.
- 5.3 When a visual signal is displayed over a course flag or class flag, it applies to that course area/class only.

6. SCHEDULE OF RACES

- 6.1 The schedule of races is as per the list at the beginning of these SI's.
- 6.2 A Skippers Briefing will be held on Saturday race days in the Clubhouse at SYC Hollywell. Briefing time will be 11:00hrs for all the Summer race series and 10:30hrs for Winter Passage series.

7. SAIL RESTRICTIONS

- 7.1 Substitution of damaged or lost sails will not be allowed unless authorized by the Race Committee. Requests for substitution shall be made to the Sailing Office at the first reasonable opportunity.
- 7.2 JaM Series – This series is designed for the use of Jib And Mains only. The difference between a headsail and a spinnaker is that the width of a headsail, measured between the midpoints of its luff and leech, is less than 75% of the length of its foot. The use of a Gennaker, Blooper, Spinnaker, Code Zero or any other purpose-built downwind sail is prohibited.
- 7.3 The headsail must be fully hanked, or attached by means of a luff groove device, to the forestay. Spinnaker poles and/or whisker poles are allowed for poling out headsails.



- 7.4 Boats shall use only one mainsail throughout the Race but may change their headsail throughout the Race.

8. RACING AREA

- 8.1 Attachment A & B shows the approximate location of the SYC Inshore Division Racing Area.

9. CLASS FLAGS

FLEET	FLAG
Inshore Division – Division 1	Code Flag Q
Inshore Division – Division 2	Code Flag T

10. COURSES

- 10.1 The diagrams and tables in ATTACHMENT C and E show the courses to be sailed for the Round the Cans Series (RTC), including the order in which marks are to be passed, and the side on which each mark is to be left.
- 10.2 The course number to be sailed for RTC will be indicated by the Course Board being displayed on the start vessel.
- 10.3 Attachment C & D shows the courses to be sailed for the Summer Passage, JaM Series, Round the Cans Series (RTC), Brass Monkey Series including the order in which marks are to be passed, and the side on which each mark is to be left.
- 10.4 The course number to be sailed for Summer Passage, JaM Series and Brass Monkeys will be indicated by a Course Board being displayed on the Race Control Tower or the Start Vessel.

11. MARKS

- 11.1 Marks, including start and finish marks, are described in Attachment C – SYC DESIGNATED MARKS.
- 11.2 All boats shall maintain a minimum distance of 3 metres from all International Association of Marine Aids to Navigation and Lighthouse Authorities (IALA) marks*. This is a condition governed by local Statutory Authorities for the OA's approved Aquatic Event Authority. Any boats failure to comply with this minimum 3 metre distance, may jeopardise all future ID racing for all boats.
- 11.3 All boats shall give due consideration to the weather conditions including tidal effect (current) wind conditions and their intended course when passing or rounding an IALA mark.



- 11.4 *Competitors may refer to the Maritime Safety Queensland Boating Maps located at <http://www.msq.qld.gov.au/Boating-maps/Gold-Coast-guides> for detailed maps.

12. AREAS THAT ARE OBSTRUCTIONS

- 12.1 Except where a IALA mark is included as a Mark of the course, areas outside of the intended channel(s) defined by the IALA marks north of and including the Crab Island West Cardinal "Q(9)15s" are considered an obstruction. For the purposes of this definition, it shall be considered that a competitor has remained clear of the obstruction provided they have left all IALA marks to their required side.
- 12.2 The finish line is an obstruction, unless finishing. Boats crossing the finish line incorrectly will be scored Did Not Finish (DNF) without a hearing. This changes RRS 35, A4 and A5. Boats may cross the finish line after they have completed the race, however boats are asked to take care not to impede or affect the boats that have yet to finish. When finishing to the South boats are requested to round the finish buoy when returning to the Hollywell dock so as not to obscure the finish line from the Tower

13. THE STARTS

SERIES NAME	WARNING SIGNAL (Not Before)
Wednesday JaM Series (Pursuit)	from 1630hrs
Round the Cans Series (RTC)	1655hrs
Brass Monkey Series	1625hrs
Winter Passage Series	1125hrs
Summer Series Passage/RTC	1225hrs

(RTC) ROUND THE CANS SERIES (RTC)

- 13.1 Races will be started in accordance with RRS Rule 26.
- 13.2 The starting line will be between a staff displaying an orange flag on the start vessel at the starboard end and the course side of the port-end starting mark.
- 13.3 Boats whose warning signal has not been made shall avoid the starting area during the starting sequence for other classes.
- 13.4 A boat starting later than four (4) minutes after her starting signal will be scored Did Not Start (DNS) without a hearing. This changes rule A4.

JAM SERIES

- 13.5 An orange On Station flag will be raised with one sound signal, ten (10) minutes prior to the first boats start time.
- 13.6 The starting line will be between a staff displaying an orange flag on the Hollywell Tower on the western end of the line and the course side of the start buoy.



- 1.37 A time synchronisation sound signal may be broadcasted at 1630hrs.
- 13.8 Races will be started using allocated handicapped start times for each boat (a Pursuit Race)
- 13.9 Boats shall start no earlier than their allocated start time. All times are listed as Australian Eastern Standard Time (AEST). Syncing of your clock is recommended at: <http://www.timeanddate.com/worldclock/fullscreen.html?n=47>
- 13.10 A sound signal will be given to any boat starting early. They will be required to restart or be scored On Course Side (OCS).
- 13.11 A boat which is OCS may be advised via VHF09.
- 13.12 All boats shall keep clear of the start line unless starting. Boats that cross the start line in either direction more than 5 minutes before their designated start time will be scored Did Not Start (DNS) without a hearing. This changes RRS Rule A4.
- 13.13 A 10 second count down and sound signal may be given for the first boat due to start.
- 13.14 A boat starting later than ten (10) minutes after her scheduled start time will be scored DNS without a hearing. This changes RRS Rule A4.
- 13.15 Definitions – Racing. A boat is racing from her preparatory signal until she finishes and clears the finishing line and marks or retires, or until the race committee signals a general recall, postponement or abandonment. The preparatory signal for a boat shall be 4 (four) minutes before her allocated handicap start time. This changes RRS26.

SUMMER PASSAGE, BRASS MONKEY & WINTER SERIES STARTS

- 13.16 Races will be started in accordance with RRS Rule 26.
- 13.17 The starting line will be between a staff displaying an orange flag on the Hollywell Tower on the western end of the line and the course side of the start buoy.
- 13.18 Where an Official Boat is used, the start line will be between a staff displaying an orange flag on the vessel and the course side of the start mark.
- 13.19 A boat starting later than ten (10) minutes after her starting signal will be scored DNS without a hearing. This changes RRS Rule A4.

14. CHANGE OF THE NEXT LEG OF THE COURSE

- 14.1 The Race Committee may change a leg of the course that begins at a rounding mark by changing the position of the next mark (or the finishing line) and signalling all boats before they begin the leg. The next mark need not be in position at that time as per RRS Rule 33.

15. SHORTENED COURSE

- 15.1 The Race Committee may shorten course at any part of the course. Boats shall finish between the Race Committee vessel displaying Code Flag "S" and a prominent feature of their choice (which may include any laid mark) as per RRS Rule 32.



16. THE FINISH

ROUND THE CANS SERIES (RTC)

- 16.1 The finishing line will be between a staff displaying a blue flag on the finishing boat at the port-end and the course side of the starboard-end finishing mark.
- 16.2 Where the Race Control Tower is used, the finishing line will be between a staff displaying a blue flag on the Race Control Tower and the course side of a finishing mark.

SUMMER PASSAGE, JAM, BRASS MONKEY & WINTER SERIES

- 16.4 When the Race Control Tower is used, the finishing line will be between a staff displaying a blue flag on the Race Control Tower and the course side of a finishing mark.
- 16.5 When an Official Boat is used, the finishing line will be between a staff displaying a blue flag on the vessel and the course side of the finishing mark. The finishing mark may be any laid mark, lateral mark or prominent feature of their choice.
- 16.6 For the JaM Series and Brass Monkey Series, the finishing line will be between an orange cylindrical buoy with a white strobe and the Race Control Tower.

17. PENALTY SYSTEM

- 17.1 Rule 44.1 is changed so that the Two-Turns Penalty is replaced by a One-Turn Penalty, including one tack and one gybe in the same direction.
- 17.2 To get clear after grounding or colliding with a vessel or object, a boat may use an engine or receive assistance to get clear. A one turn penalty shall be taken as soon as possible after the incident. A Self Declaration to the race committee shall be made as soon as possible. The starting handicap for the boat in the following race shall not be adjusted from the previous race. This changes RRS 41, 42, 44, A3.
- 17.3 A boat using an engine within 4 (four) minutes of her start, shall complete a one turn penalty to be taken as soon as possible after the start. A Self Declaration to the race committee shall be made as soon as possible. The starting handicap for the boat in the following race shall not be adjusted accordingly. This changes RRS 42, 44, A3.

18. TIME LIMITS

- 18.1 Round the Cans Series (RTC) the time limit for the first boat in each class will be ninety (90) minutes.
- 18.2 Summer & Winter Series, the time limit for the first boat in each class will be one hundred and eighty (180) minutes.
- 18.3 Round the Cans Series (RTC), boats failing to finish within fifty (50) minutes after the first boat sails the course and finishes will be scored Did Not Finish (DNF) without a hearing. This changes rules 35, A4 and A5.



- 18.4 Summer & Winter Series, boats failing to finish within ninety (90) minutes after the first boat sails the course and finishes will be scored Did Not Finish (DNF) without a hearing. This changes rules 35, A4 and A5.
- 18.5 JaM Series time limit will be 1900hrs. Boats failing to finish within the Time Limit will be scored TLE (Time Limit Expired) without a hearing. This changes Rule 35, A4 and A5.
- 18.6 Brass Monkey Series time limit will be 1830hrs. Boats failing to finish within the Time Limit will be scored TLE (Time Limit Expired) without a hearing. This changes Rule 35, A4 and A5.
- 18.7 If the first boat does not reach the first mark within sixty (60) minutes, the race may be abandoned.

19. PROTESTS

- 19.1 RRS Appendix T- ARBITRATION applies.
- 19.2 Protest forms are available at the OA's Main Beach reception, Sailing Office at Hollywell and may also be downloaded from their website. Protests shall be delivered there within the Protest Time Limit.
- 19.3 The Protest Time Limit is forty-five (45) minutes after the last boat finishes. This also applies to all protests by the Race Committee and Protest Committee and requests for redress. This changes RRS 61.3 and 62.2.

20. SCORING

- 20.1 The low points scoring system of RRS Appendix A4 will apply.
- 20.2 For Boats that Did Not Finish (DNF) shall be scored points for the finishing place plus one (1) more than the number of boats that came to the starting area. This changes RRS Rule A5.1.
- 20.3 A boat that did not come to the starting area (DNC) shall be scored points for the finishing place one more than the number of boats entered in the series. This changes RRS Rule A5.2.
- 20.4 Four (4) races are required to constitute a series. When fewer than five (5) races have been completed, all scores shall count.
- 20.5 When five (5) to nine (9) races have been completed a boat's series score will be the total of her race scores excluding her worst score.
- 20.6 When ten (10) to twelve (12) races have been completed a boat's series score will be the total of her race scores excluding her two (2) worst scores.
- 20.7 When thirteen (13) or more races have been completed a boat's series score will be the total of her race scores excluding her three (3) worst scores.
- 20.8 When seventeen (17) or more races have been completed a boat's series score will be the total of her race scores excluding her four (4) worst scores.
- 20.9 The Race Committee at its discretion may award nil points to all competitors in any race in any series by notification prior to the start on the official noticeboard. Should



the race committee enforce this rule, it cannot be protested, and redress cannot be applied for. This changes RRS 90.3(a) and RRS Appendix A.

- 20.10 If a race is abandoned due to lack of numbers, boats that are ready to sail with crew at Hollywell on the day, will be recorded as DNS, all other boats entered in the series will be recorded DNC. This changes RRS A5.1.

21. SAFETY REGULATIONS

- 21.1 All helmspersons shall "Sign On" via VHF09 radio advising their Boat Name, Sail # and P.O.B. (Persons on Board) prior to their start time. Race Control will confirm recorded details for confirmation of "Sign On".
- 21.2 A boat that retires from a race shall notify the Race Committee as soon as possible via VHF09 radio including P.O.B.
- 21.3 Competitors must provide a clearly exact identifiable sail number on their mainsail as registered in their Top Yacht Entry. A Failure to so carry clearly distinguishable sail numbers will result in a boat being scored as DNF without a hearing. This shall not provide grounds for redress.
- 21.4 Where lifelines complying with AS SR Part 1 Section 3 Rule 3.12 have not been fitted, all crew shall wear a visible life jacket, as per AS SR Part 1 Section 5.
- 21.5 In accordance with AS SR's, all boats must be fitted with Navigation Lights complying with IRPCAS. During the periods between the published Sunset and Sunrise times (www.bom.gov.au), and during times of restricted visibility, all boats must illuminate their Navigation Lights whilst on the water.
- 21.6 Boats failing to comply with any of these Safety Regulations will be scored ENP (Event Nominated Penalty) without a hearing. The penalty shall be 20% of the score for Did Not Finish, rounded to the nearest whole number (0.5 rounded upward) which is added to your actual finish position. This changes RRS 44, A3, A4 and A5.

22. REPLACEMENT, SUBSTITUTION OR MODIFICATION OF CREW OR EQUIPMENT

- 22.1 Substitution of damaged or lost equipment will not be allowed unless authorised by the Race Committee. Requests for substitution shall be made to the committee at the first reasonable opportunity.
- 22.2 Failing to notify the SYC Sailing Office of changes to boats configuration or rating, may result in protest by the Race Committee. Penalties for these breaches may be less than disqualification if the Protest Committee so decides.

23 EQUIPMENT AND MEASUREMENT CHECKS

- 23.1 A boat or equipment may be inspected at any time for compliance with the class rules, notice of race and sailing instructions.
- 23.2 When instructed by a Race Official, a boat shall proceed to a designated area for inspection.



24 OFFICIAL BOATS

- 24.1 All official boats are numbered by the OA and marked with the OA Burgee.

25. SUPPORT TEAMS

- 25.1 Team leaders, coaches and other support personnel shall stay no less than one hundred (100) metres outside areas where boats are racing from the time of the preparatory signal for the first class to start until all boats have finished or retired or the race committee signals a postponement, general recall or abandonment.
- 25.2 No disturbing wash is to be created near a competitor on the racecourse.

26. RUBBISH DISPOSAL

- 26.1 Boats shall not put rubbish in the water. Rubbish may be placed aboard support and Race Committee boats.

27. RACE PRIZES

DAILY PRIZES

- 27.1 For the JAM Series, the Skipper or a crew member of the boat must be present at daily Prize Presentations to receive prizes. JaM prizes not collected during the presentation will be redrawn to the next placings accordingly.
- 27.2 JAM Series – Three prizes will be awarded - First, Second and Third Place.
- 27.3 Summer Series, Round The Cans (RTC), Brass Monkey Series, Winter Series– Prizes will be awarded to 1st, 2nd and 3rd on corrected time. On or before 1900hrs.

PERPETUAL TROPHIES

- 27.4 The annual Sailing Presentation will take place at a Clubhouse of SYC.
- 27.5 Only current financial members of the Southport Yacht Club Inc. are eligible for a season entry.
- 27.6 Only SERIES ENTRANTS are eligible for Sailing Season prizes at the annual Sailing Presentation event.
- 27.7 Other prizes may be awarded at the discretion of the OA.

28. DISCLAIMER OF LIABILITY

- 28.1 All those taking part in races conducted by the OA do so at their own risk and responsibility.



- 28.2 The OA, any sponsor and any party involved in the organisation of any event disclaims any and every responsibility for any loss, damage, injury to persons and/or things, both ashore and at sea, as a consequence of participation in any way in the races covered by these sailing instructions.
- 28.3 Attention is drawn to RRS 3 which states: "The responsibility for a boat's decision to participate in a race or to continue racing is hers alone."

29. INSURANCE

- 29.1 Each participating boat shall be insured with valid third-party liability insurance with a minimum cover of \$10M (AUD).

30. MEDIA RIGHTS

- 30.1 In participating in the ID, a competitor grants to the OA and the sponsors, the right in perpetuity, to make, reproduce, edit, use and show, from time to time and at their discretion, any motion pictures, still pictures and live, taped or film television and other reproductions of him/ her taken during the Sailing Season and to use his / her likeness, voice, name and any other information in any material related without compensation.

31. FURTHER INFORMATION

Should you require any future information, please do not hesitate to contact:

ID – INSHORE DIVISION REPRESENTATIVE

Wayne Kirby 0418 950 250
wayne@kirbyfamily.id.au

SOUTHPORT YACHT CLUB INC. SAILING OFFICE

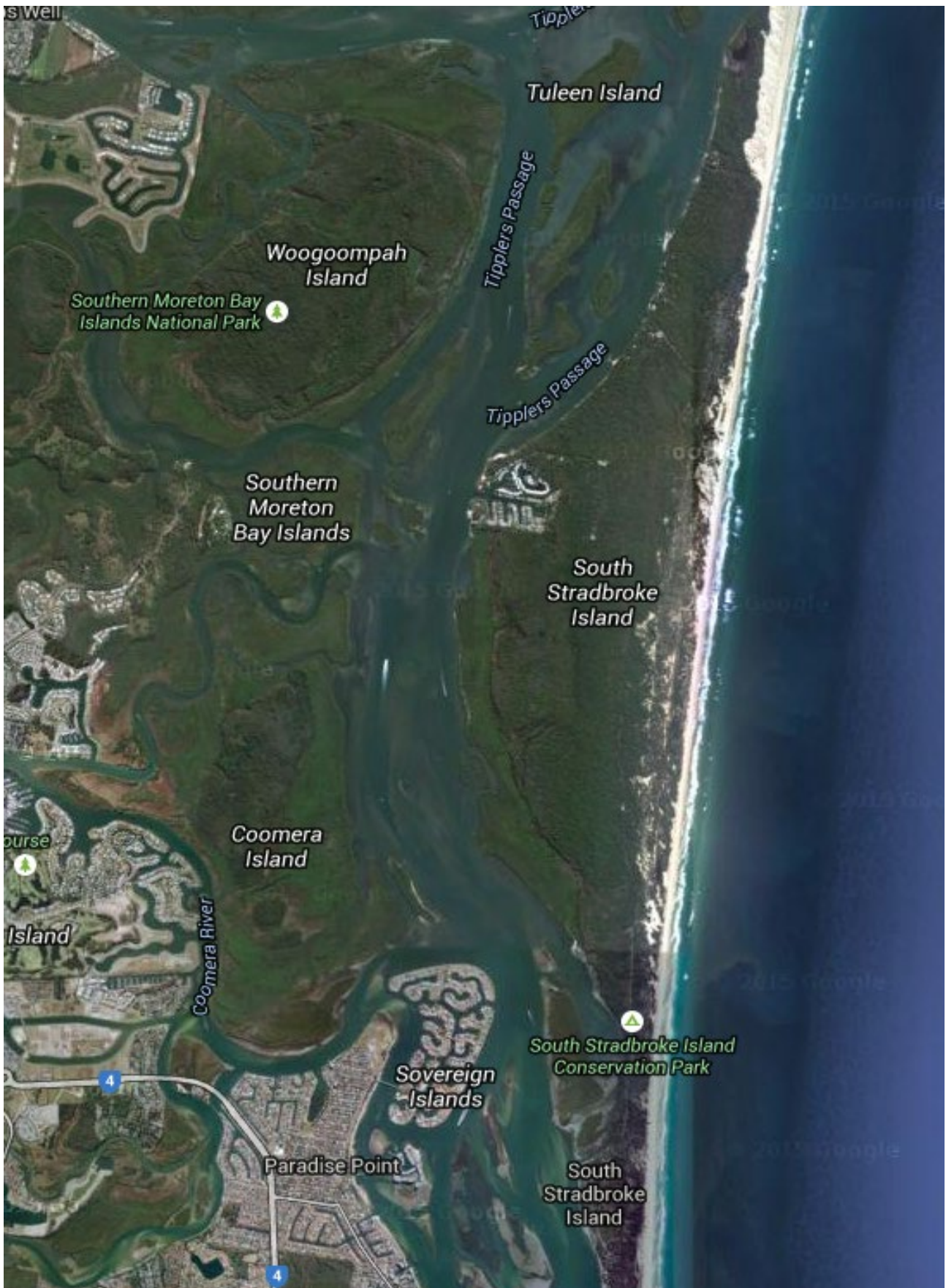
1 Marina Crescent, HOLLYWELL QLD 4216.

Phone: (07) 5537 7030

sailing.reception@sycgc.com.au



ATTACHMENT A - Approximate Racing Area





ATTACHMENT B - Approximate location for RTC Courses





ATTACHMENT C - Buoys / Marks & Courses

BUOYS	DESCRIPTION
START	Orange with Black Top inflatable cylinder
FINISH	Blue
1 / 2 / 3 / A / F / X / G	Yellow
Barging Buoy	Orange teardrop

DESIGNATED MARKS	LOCATION	Approx. GPS COORDINATES
Hollywell Start / Finish Bouy	Hollywell Control Tower & the Start Finish Buoy	
A	Ephraim Is (laid mark)	
B	John Elkes Special	27° 55.0'S 153° 24.7'E
C	Crab Is Port Lateral	27° 54.5'S 153° 24.9'E
D	Sovereign Island Special Mark	27° 52.3'S 153° 24.8'E
E	Coomera River East Cardinal	
H	Seaway East Cardinal	27° 56.2'S 153° 25.3'E
K	Curree Red Lateral	27° 54.5'S 153° 24.9'E
W	Wasp Creek Port Lateral	27° 50.43'S 153° 23.7'E
G	Laid Mark Nth of Seaway Cardinal	
F	Laid Mark – West of Perry's	

NB: ALL MARKS TO BE LEFT/PASSED TO PORT UNLESS INDICATED BY (S) – IN WHICH CASE MARKS ARE TO BE LEFT/PASSED TO STARBOARD.

WC = Western Channel



COURSE	MARK ROUNDINGS	TYPE
W1	START - 1 - FINISH	RTC
W2	START - 1 - 3 - 1 - FINISH	RTC
W3	START - 1 - 3 - 1 - 3 - 1 - FINISH	RTC
W4	START - 1 - 3 - 1 - 3 - 1 - 3 - 1 - FINISH	RTC
W5	START - 1 - 3 - 1 - 3 - 1 - 3 - 1 - 3 - 1 - FINISH	RTC
T1	START - 1 - 2 - FINISH	RTC
T2	START - 1 - 2 - 3 - 1 - FINISH	RTC
T3	START - 1 - 2 - 3 - 1 - 3 - 1 - 2 - FINISH	RTC
1	START - B - C - D - FINISH	PSG/WS/BM/JAM
2	START - D(s) - C(s) - B(s) - FINISH	PSG/WS/BM/JAM
3	START - A - H - FINISH	PSG/WS/BM
4	START - D - FINISH	PSG/WS/BM
5	START - H - A - FINISH	PSG/WS/BM
6	START - H - C - W - FINISH	PSG/WS/BM
7	START - W - A - H - FINISH	PSG/WS/BM
8	NOTIFIED AT BRIEFING	PSG/WS/BM/JAM
9	START - B - C - E - D - E - FINISH	PSG/WS/BM
10	START - E(s) - D(s) - E(s) - C(s) - B(s) - FINISH	PSG/WS/BM
11	START - A - B - A - FINISH	PSG/WS/BM/JAM
12	START - B - A - B - FINISH	PSG/WS/BM/JAM
13	START - D(s) - B (WC) - FINISH	PSG/WS/BM/JAM
14	START - B - D (WC) - B (WC) - FINISH	PSG/WS/BM/JAM
15	START - B - F - B - G - A - FINISH	PSG/WS/BM/JAM
16	START - G - K - G - C - D - FINISH	PSG/WS/BM/JAM
17	START - D(s) - C(s) - G - K - G - FINISH	PSG/WS/BM/JAM
18	START - H - C - E - B(WC) - FINISH	PSG/WS/BM/JAM
19	START - E(s) - C(s) - H - A - FINISH	PSG/WS/BM/JAM
20	START - H - C - E - D - E - B -- FINISH	PSG/WS/BM/JAM
21	START - E(S) - D(S) - E(S) - C(S) -- H - A -- FINISH	PSG/WS/BM/JAM



ATTACHMENT D

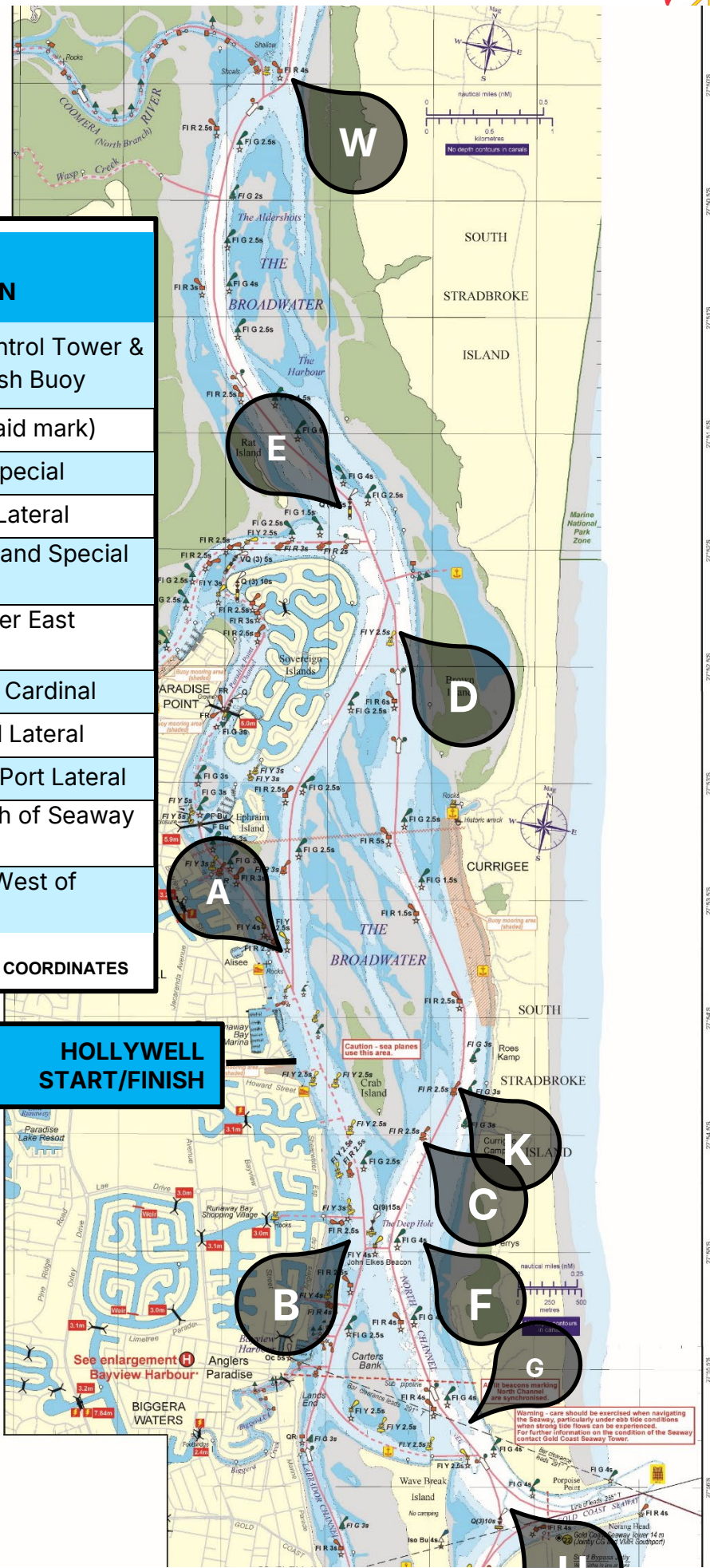
ID PASSAGE MAP

MARKS	LOCATION / DESCRIPTION
Hollywell Start / Finish Buoy	Hollywell Control Tower & the Start Finish Buoy
A	Ephraim Is (laid mark)
B	John Elkes Special
C	Crab Is Port Lateral
D	Sovereign Island Special Mark
E	Coomera River East Cardinal
H	Seaway East Cardinal
K	Currigee Red Lateral
W	Wasp Creek Port Lateral
G	Laid Mark Nth of Seaway Cardinal
F	Laid Mark – West of Perry's
REFER ATTACHMENT B FOR GPS COORDINATES	

HOLLYWELL START/FINISH

NB: ALL MARKS TO BE LEFT/PASSED TO PORT UNLESS INDICATED BY (S) – IN WHICH CASE MARKS ARE TO BE LEFT/PASSED TO STARBOARD.

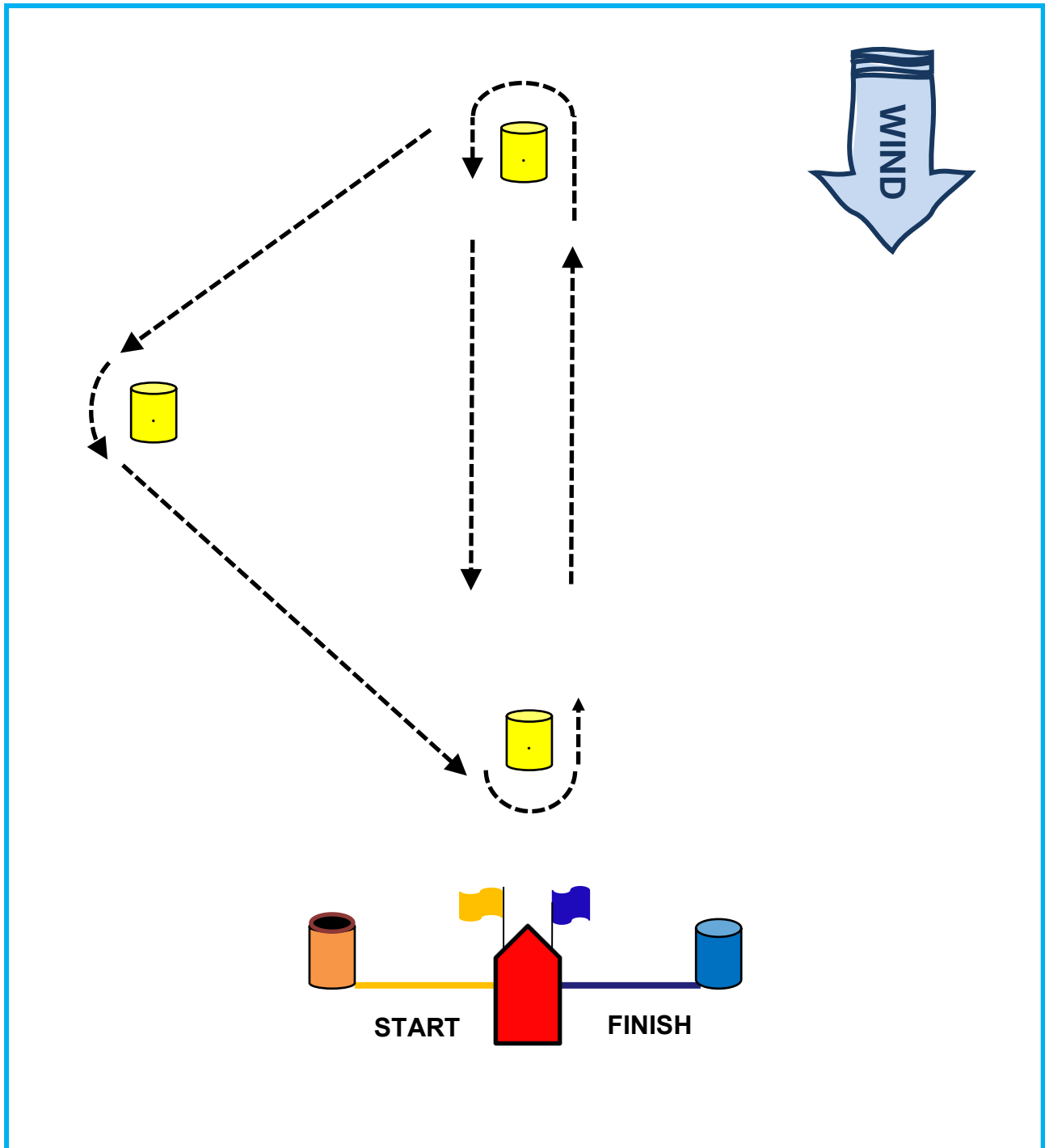
WC = Western Channel





ATTACHMENT E - ID ROUND THE CANS SERIES (RTC) DIAGRAM

WINDWARD/LEEWARD & TRIANGULAR COURSE





ATTACHMENT F - DECLARATION

To: the Sailing Manager
 SOUTHPORT YACHT CLUB.
 Phone (07) 5537 7030, **Mobile 0475 434 800**, sailing.officer@sycgc.com.au

BOAT NAME	SAIL NUMBER
--------------	----------------

I declare that during the race the following Rules were NOT observed and / or Infringements occurred and / or Penalties taken, with an explanation given as follows:

Witnessed by (Boat Name/s, Skipper/Crew Name/s):

Name of Person-In-Charge: _____ Date: ___/___/___

Signature of Person-In-Charge: _____.





PARENTAL CONSENT & INDEMNITY FORM

For Participants under the age of 18

Event Details/Name:	THURSDAY TWILIGHT DIVISION	RACE:
<p>Participant Details:</p> <p>First Name: _____ Surname: _____</p> <p>Email: _____ Mobile: _____</p> <p>Please note any medical conditions which are relevant for this event:</p> <p>_____</p>		

<p>Parent/Guardian Details:</p> <p>Full Name: _____ Relationship to the Child: _____</p> <p>Email: _____ Phone: _____</p> <p>Address: _____ State: _____ P/Code: _____</p>		
---	--	--

PARENTAL CONSENT & INDEMNITY

Parental Consent: I give permission for my child to attend and participate in the abovementioned Southport Yacht Club event. **Indemnity:** I understand that while every reasonable precaution will be undertaken to ensure the protection of my child, I hereby release Southport Yacht Club, authorised staff and volunteers from any and all liability in the event of any injury, accident, misfortune, damage or loss that may occur to my child and/or their property while present at the aforementioned Southport Yacht Club event. Further, I indemnify Southport Yacht Club, authorised staff and volunteers from and against all loss, including legal expenses, connected with or arising from any claims or demands in relation to my child’s attendance at the event. I agree and understand that Southport Yacht Club, authorised staff and volunteers reserve the right to exercise discretion to refuse to register any participant upon medical and/or other grounds without providing a detailed reason for doing so. **Medical Treatment Consent:** I give permission for Southport Yacht Club to obtain emergency medical, hospital or ambulance assistance and/or treatment for my child at any time they consider necessary. I understand that every effort will be made for myself to be notified before instituting such procedures. I acknowledge that I will be liable for any medical, hospital or ambulance expenses incurred in my child’s treatment and I agree to pay those expenses. **Privacy Declaration:** I understand that Southport Yacht Club may collect information about my child in accordance with their Privacy Policy, and that this information may be disclosed to certain parties it engages in this event. I consent to these details being used by Southport Yacht Club for the promotion of future events and resources.

Full Name: _____ Signature: _____ Date: _____