



SOUTHPORT YACHT CLUB

THURSDAY TWILIGHT  
DIVISION

**SAILING INSTRUCTIONS**

2024 - 2025



## TT - THURSDAY TWILIGHT DIVISION SCHEDULE 2024-2025

Winter 1/13	Thursday 2 <sup>nd</sup> May
Winter 2/13	Thursday 9 <sup>th</sup> May
Winter 3/13	Thursday 16 <sup>th</sup> May
Winter 4/13	Thursday 23 <sup>rd</sup> May
Winter 5/13	Thursday 30 <sup>th</sup> May
Winter 6/13	Thursday 6 <sup>th</sup> June
Winter 7/13	Thursday 13 <sup>th</sup> June
Winter 8/13	Thursday 20 <sup>th</sup> June
Winter 9/13	Thursday 27 <sup>th</sup> June
Winter 10/13	Thursday 4 <sup>th</sup> July
Winter 11/13	Thursday 11 <sup>th</sup> July
Winter 12/13	Thursday 18 <sup>th</sup> July
Winter 13/13	Thursday 25 <sup>th</sup> July
Spring 1/13	Thursday 19 <sup>th</sup> September
Spring 2/13	Thursday 26 <sup>th</sup> September
Spring 3/13	Thursday 3 <sup>rd</sup> October
Spring 4/13	Thursday 10 <sup>th</sup> October
Spring 5/13	Thursday 17 <sup>th</sup> October
Spring 6/13	Thursday 31 <sup>st</sup> October
Spring 7/13	Thursday 7 <sup>th</sup> November
Spring 8/13	Thursday 14 <sup>th</sup> November
Spring 9/13	Thursday 21 <sup>st</sup> November
Spring 10/13	Thursday 28 <sup>th</sup> November
Spring 11/13	Thursday 5 <sup>th</sup> December
Spring 12/13	Thursday 12 <sup>th</sup> December
Spring 13/13	Thursday 19 <sup>th</sup> December
Summer 1/14	Thursday 9 <sup>th</sup> January
Summer 2/14	Thursday 16 <sup>th</sup> January
Summer 3/14	Thursday 23 <sup>rd</sup> January
Summer 4/14	Thursday 30 <sup>th</sup> January
Summer 5/14	Thursday 6 <sup>th</sup> February
Summer 6/14	Thursday 13 <sup>th</sup> February
Summer 7/14	Thursday 20 <sup>th</sup> February
Summer 8/14	Thursday 27 <sup>th</sup> February
Summer 9/14	Thursday 6 <sup>th</sup> March
Summer 10/14	Thursday 13 <sup>th</sup> March
Summer 11/14	Thursday 20 <sup>th</sup> March
Summer 12/14	Thursday 27 <sup>th</sup> March
Summer 13/14	Thursday 3 <sup>rd</sup> April
Summer 14/14	Thursday 10 <sup>th</sup> April



### THURSDAY TWILIGHT DIVISION SERIES FEES

WHOLE SEASON DISCOUNT (40 Races)	\$375.00
SUMMER TWILIGHT SERIES (14 Races)	\$170.00
WINTER TWILIGHT SERIES (13 Races)	\$155.00
SPRING TWILIGHT SERIES (13 Races)	\$155.00
Casual Race Entry (per race day)	\$20.00 <i>SYC Member</i> \$30.00 <i>Non SYC Member (max entry 3)</i>

### ADDITIONAL SYC SPECIAL EVENTS

Event / Regatta Name	Date
FLAT ROCK YACHT RACE	Saturday 23 <sup>rd</sup> June 2024
GCCM GOLD COAST MACKAY YACHT RACE	Thursday 1 <sup>st</sup> August 2024
SAIL PAST & BLESSING THE FLEET	Saturday 14 <sup>th</sup> September 2024
BREAKING OF THE FLAG CEREMONY & DA\$H 4 CA\$H	Sunday 15 <sup>th</sup> September 2024
THE YACHT SALES CO. SAIL PARADISE REGATTA	Saturday 5 <sup>th</sup> to Monday 7 <sup>th</sup> October 2024
BURLEIGH BASH	Sunday 27 <sup>th</sup> October 2024
COOK ISLAND YACHT RACE	Sunday 8 <sup>th</sup> December 2024
JULIAN ROCKS YACHT RACE	Saturday 11 <sup>th</sup> & Sunday 12 <sup>th</sup> January 2025
TED ELKES MEMORIAL REGATTA	Saturday 25 <sup>th</sup> & Sunday 26 <sup>th</sup> January 2025
TWO HANDED RACE	Saturday 8 <sup>th</sup> March 2025
DUX BIRTHDAY CELEBRATIONS	Sunday 30 <sup>th</sup> March 2025
LADIES DAY RACE	Saturday 26 <sup>th</sup> April 2025

### SAILING COMMITTEE DIVISIONAL REPRESENTATIVES

#### SYC Vice Commodore of Sail:

Glenn Burrell 0411 422 232 [glenn@aquaticelements.com.au](mailto:glenn@aquaticelements.com.au)

#### SYC Sailing Officer:

Steven Murphy 0475 434 800 [sailing.officer@sycgc.com.au](mailto:sailing.officer@sycgc.com.au)

#### OD - Offshore Division Representative:

Barry Berg 0400 110 555 [barry.wildstyle@gmail.com](mailto:barry.wildstyle@gmail.com)

#### TT – Thursday Twilight Division Representative:

Peter Karlovic 0400 391 561 [sailorpk@outlook.com](mailto:sailorpk@outlook.com)

#### ID – Inshore Division Representative:

Wayne Kirby 0418 950 250 [wayne@kirbyfamily.id.au](mailto:wayne@kirbyfamily.id.au)

#### OTBC – Off the Beach Catamaran Division Representative:

David Chester 0431 316 574 [david\\_chester202@hotmail.com](mailto:david_chester202@hotmail.com)

#### OTBD – Off the Beach Dinghy Division Representative:

Stuart Waters 0400 155 600 [stuartwaters@live.com.au](mailto:stuartwaters@live.com.au)

#### HC – Handicap Committee Representatives:

Russell Birse, Colin Metcher [sailing.reception@sycgc.com.au](mailto:sailing.reception@sycgc.com.au)



**TABLE OF CONTENTS**

TT - THURSDAY TWILIGHT DIVISON SCHEDULE 2024-2025 ..... 2

THURSDAY TWILIGHT DIVISION SERIES FEES ..... 3

TABLE OF CONTENTS ..... 4

INVITATION ..... 5

1. RULES ..... 5

2. ELIGIBILITY ..... 5

3. DIVISIONS ..... 6

4. COMMUNICATION ..... 6

4. CHANGES TO SAILING INSTRUCTIONS ..... 6

5. SCHEDULE OF RACES ..... 6

6. SAIL RESTRICTIONS ..... 6

7. RACING AREA ..... 6

8. THE COURSES ..... 7

10. MARKS ..... 7

11. THE START ..... 7

12. CHANGE OF THE NEXT LEG OF THE COURSE ..... 8

13. SHORTENED COURSE ..... 8

14. THE FINISH ..... 8

15. PENALTY SYSTEM & PENALTIES ..... 8

16. TIME LIMIT ..... 8

17. PROTESTS ..... 9

18. SCORING ..... 9

19. SAFETY REGULATIONS ..... 9

20. EQUIPMENT AND MEASUREMENT CHECKS ..... 9

21. OFFICIAL BOATS ..... 10

22. RUBBISH DISPOSAL ..... 10

23. PRIZES ..... 10

24. PERPETUAL PRIZES ..... 10

25. DISCLAIMER OF LIABILITY ..... 10

26. INSURANCE ..... 10

27. MEDIA RIGHTS ..... 10

28. FURTHER INFORMATION ..... 11

ATTACHMENT A - SYC TWILIGHT RACING AREA ..... 12

ATTACHMENT B - SYC TWILIGHT MARKS ..... 13

ATTACHMENT C - SYC TWILIGHT MARKS MAP ..... 13

ATTACHMENT D - SYC TWILIGHT COURSES & MARK ROUNDINGS ..... 14

ATTACHMENT E - DECLARATION ..... 16

PARENTAL CONSENT & INDEMNITY FORM ..... 17



## INVITATION

Southport Yacht Club's Thursday Twilight Division is designed for fun and social sailing on the beautiful waters of the Broadwater between Main Beach and Runaway Bay on the Gold Coast. Combining this with spectacular sunsets, magnificent scenery and friendly healthy competition, provides an unforgettable experience that will be thoroughly enjoyed and shared by all.

## 1. RULES

- 1.1 The Organising Authority (OA) is Southport Yacht Club Inc.
- 1.2 Races will be governed by the current rules as defined in the Racing Rules of Sailing (RRS) and the Prescriptions of Australian Sailing (AS).
- 1.3 A minimum of six (6) boats are required to constitute a race in Division 1&2 combined. If there are less than the required amount the race shall be abandoned.
- 1.4 All boats in both divisions shall comply with AS Special Regulations (SR): Part 1 – Category 7 *Plus*. Boats in either Division wishing to race offshore must have category 4 (Additional items required by the OA).
- 1.5 All boats shall supply at time of entry a current AS SR Equipment Audit Form Category 7 Plus. Any boats competing offshore will require Category 4 (or higher) Both Category's must remain current throughout the Sailing Season and has been certified by an approved AS Club / National Equipment Auditor. AS SR Equipment Audit forms are available from the OA website.
- 1.6 All boats shall comply with the Transport Operations (Marine Safety) Act 1994 and Regulation. In the event of a reportable Marine Incident the SYC Sailing Officer is to be notified as soon as practical; but no later than 1 hour after the last boat has finished, a copy of the MSQ Marine Incident Report is required to be lodged with the OA at the same time it is lodged with Maritime Safety Queensland.
- 1.7 The *International Regulations for the Prevention of Collisions at Sea 1972* (COLREGS) shall apply at all times. The *Racing Rules of Sailing* (RRS) will apply only between those ships that are participating in the event, for the duration of the event. Should interaction occur with non-participating ships, then COLREGS shall apply to all ships and shall over-ride all other rules. This is a condition governed by local Statutory Authorities for the OA's approved Aquatic Event Permit.
- 1.9 RRS Appendix T – Arbitration applies.
- 1.10 Compliance with SYC's current Sailing Season Policy.
- 1.11 All competitors are reminded of RRS 1.1 Helping Those in Danger; A boat or competitor shall give all possible help to any person or vessel in danger.

## 2. ELIGIBILITY

- 2.1 Thursday Twilight Division (TT) races are open to all Monohull and Multihull Yachts (both trailable and fixed keel) on the register of a yacht or sailing club affiliated with AS.
- 2.2 A boat shall have a minimum of 2 crew.
- 2.3 Off the Beach classes are not permitted to sail in TT races.
- 2.4 All boats must be entered via the Top Yacht entry system no later than 1400hours on each Tuesday prior to race day.



### 3. DIVISIONS

- 3.1 There will be two Divisions for the Summer, Winter & Spring Series. Entrants will be allocated into their division by the Race Committee, prior to the commencement of the series and is not subject to change unless determined necessary by the Race Committee.

### 4. COMMUNICATION

- 4.1 On each race day before 1100hrs, the OA shall email the “Primary Contact Person” of each boat, a “SYC Thursday Twilight Series Briefing & Communication Notice”.
- 4.2 This person shall then provide a “Read Receipt” of this Notice, providing acknowledgement and the boats intention to race.
- 4.3 A “Confirmed” email will then be returned by the OA before 1400hrs confirming the boats eligibility to race on that day.
- 4.4 Only “Confirmed” boats are permitted to participate in a race.
- 4.5 On the water, the Race Committee intends to monitor and communicate with competitors on VHF10 radio channel for Division 1 and VHF09 for Division 2.

### 4. CHANGES TO SAILING INSTRUCTIONS

- 4.1 Changes to Sailing Instructions (SI) will be emailed to competitors on the TT Distribution List and posted on the OA’s website on the Official Noticeboard and the TT page not less than sixty (60) minutes before the scheduled start time.

### 5. SCHEDULE OF RACES

- 5.1 The schedule of races is in accordance with the listed schedule at the beginning of these SI.

### 6. SAIL RESTRICTIONS

- 6.1 The difference between a headsail and a spinnaker is that the width of a headsail, measured between the midpoints of its luff and leech, is less than 75% of the length of its foot.
- 6.2 The use of a Gennaker, Bloopers, Spinnaker, Code Zero or any other purpose-built downwind sail is prohibited.
- 6.3 The headsail must be fully hanked, or attached by means of a luff groove device, to the forestay.
- 6.4 Spinnaker poles and/or whisker poles are allowed for poling out headsails.
- 6.5 Boats shall use only one mainsail throughout the Race but may change their headsail throughout the Race.

### 7. RACING AREA

- 7.1 Attachment A – SYC TWILIGHT RACING AREA shows the approximate location of the allocated racing area.



## 8. THE COURSES

- 8.1 All courses for the season are identified in Attachment C – SYC TWILIGHT COURSES, including the order in which the marks are to be passed and the side on which each mark is to be passed.
- 8.2 The Course to be sailed will be indicated by the Course Number numeral Pennant or course board being displayed on the Start Boat.

## 10. MARKS

- 10.1 All boats shall maintain a minimum distance of 3 metres from all International Association of Marine Aids to Navigation and Lighthouse Authorities (IALA) marks\*. This is a condition governed by local Statutory Authorities for the OA's approved Aquatic Event Authority. Any boats failure to comply with this minimum 3 metre distance, may jeopardise all future TT racing for all boats.
- 10.2 All boats shall give due consideration to the weather conditions including tidal effect (current) wind conditions and their intended course when passing or rounding an IALA mark.
- 10.3 \*Competitors may refer to the Maritime Safety Queensland Boating Maps located at <http://www.msq.qld.gov.au/Boating-maps/Gold-Coast-guides> for detailed maps.

## 11. THE START

- 11.1 Races will be started using allocated handicap start times for each boat (a Pursuit Race):
  - 11.1.1 A boat shall start **no earlier than** her allocated handicap start time. All handicap start times are listed as Australian Eastern Standard Time (AEST).
  - 11.1.2 Boats are recommended to synchronise their times at: <http://www.timeanddate.com/worldclock/fullscreen.html?n=47>
- 11.2 The first starting signal for racing covered by these sailing instructions shall be:

EVENT SERIES	TIME
Spring Series (Pursuit)	From 1530hrs
Summer Series (Pursuit)	From 1530hrs
Winter Series (Pursuit)	From 1500hrs

- 11.3 All boats shall keep clear of the start line and not cross in either direction within five (5) minutes prior to their allocated handicap start time.
- 11.4 The starting line for Thursday Twilight Races will be in accordance with Attachment B – SYC MARKS and Attachment C – SYC TWILIGHT COURSES.
- 11.5 A boat starting later than five (5) minutes after her start time will have her CHC reviewed by the Race Committee and Handicap Committee and her next AHC may be adjusted to ensure fairness to all competitors. This will be conducted without a hearing and changes RRS A3, A4 & A5.
- 11.6 Definitions – Racing. A boat is racing from her preparatory signal until she finishes and clears the finishing line and marks or retires, or until the race committee signals a general recall, postponement or abandonment. The preparatory signal for a boat shall be 4 (four) minutes before her allocated handicap start time. This changes RRS26.



## 12. CHANGE OF THE NEXT LEG OF THE COURSE

- 12.1 The Race Committee may change a leg of the course that begins at a rounding mark by changing the position of the next mark (or the finishing line) and signalling all boats before they begin the leg. The next mark need not be in position at that time.

## 13. SHORTENED COURSE

- 13.1 The Race Committee may shorten course at any part of the course. Boats shall finish between the Race Committee vessel displaying Code Flag “S” and a prominent feature of their choice (which may include any laid mark).

## 14. THE FINISH

- 14.1 The finishing line will be in accordance with Attachment B – SYC MARKS and Attachment C – SYC TWILIGHT COURSES.

## 15. PENALTY SYSTEM & PENALTIES

- 15.1 For all boats rule 44.1 is changed so that the Two-Turns Penalty is replaced by a One-Turn Penalty.
- 15.2 To get clear after grounding or colliding with a vessel or object, a boat may use an engine to get clear. If an engine is used a one turn penalty shall be taken as soon as possible after the incident and a Declaration to the race committee shall be made as soon as possible. At the sole discretion of the Race Committee as recommended by the Handicap Committee the starting handicap for the boat in the following race may or may not be adjusted from the previous race. This changes RRS 44, A3.
- 15.3 A boat using an engine within 1 (one) minute of her start, shall complete a one turn penalty to be taken as soon as possible after the start. A Declaration to the race committee shall be made as soon as possible. The starting handicap for the vessel in the following race shall not be adjusted accordingly. This changes RRS 44, A3.
- 15.4 An infringement of any other rule or Sailing Instruction will result in a boat receiving an Event Nominated Penalty (ENP) which shall be 20% of the score for Did Not Finish, rounded to the nearest whole number (0.5 rounded upward).  
This changes RRS 29, 35, 44, A4 & A5.

## 16. TIME LIMIT

- 16.1 The Winter Series time limit for all boats to be finished is 1800 hours.
- 16.2 The Spring Series time limit for all boats to be finished is 1830 hours.
- 16.3 The Summer Series time limit for all boats to be finished is 1830 hours.
- 16.4 For a boat that continues racing up until the Time Limit but could not finish shall be scored TLE (Time Limit Expired) which will be the number of boats that Finished the race plus 3 points





## 17. PROTESTS

- 17.1 RRS Appendix T- ARBITRATION applies.
- 17.2 Protest forms are available at the OA's Main Beach reception, Sailing Office at Hollywell and may also be downloaded from their website. Protests shall be delivered there within the Protest Time Limit.
- 17.3 The Protest Time Limit is sixty (60) minutes after the last boat finishes the race or the race committee signals no more racing today, whichever is later. The also applies to all protests by the Race Committee and Protest Committee and requests for redress. This changes RRS 61.3 and 62.2.

## 18. SCORING

- 18.1 The low points scoring system of RRS Appendix A.
- 18.2 For a Boat that Did Not Finish (DNF) they shall be scored the number of boats that have signed on for the Race plus 1 point.
- 18.3 For a boat that Did Not Compete (DNC) they shall be scored the number of boats that have signed on for the Race plus 3 points.
- 18.4 Four (4) races are required to constitute a series. When fewer than five (5) races have been completed, all scores shall count.
- 18.5 When five (5) to seven (7) races have been completed a boat's series score will be the total of her race scores excluding her worst score.
- 18.6 When eight (8) to eleven (11) races have been completed a boat's series score will be the total of her race scores excluding her two (2) worst scores.
- 18.7 When twelve (12) or more races have been completed a boat's series score will be the total of her race scores excluding her three (3) worst scores.  
This changes RRS Appendix A5

## 19. SAFETY REGULATIONS

- 19.1 Division 1 boats shall always maintain a listening watch on VHF010 and Division 2 VHF09.
- 19.2 All Division 1 boats shall sign on with Race Control via VHF10 and Division 2 VHF 09 at least five (5) minutes prior to their allocated handicap start time, confirming Boat Name, Sail # and the number of persons on board (P.O.B.).
- 19.3 A boat that retires from a race shall notify Race Control for Division 1 on VHF10 and Division 2 VHF09 as soon as possible.
- 19.4 Unless in use, no part of the anchor may project forward of the bow at any time whilst racing. Anchors must be available for immediate use in the event of an emergency.
- 19.5 Where lifelines complying with AS SR Part 1 Section 3 Rule 3.12 have not been fitted, all crew shall wear a visible life jacket in accordance with AS SR Part 1 Section 5.
- 19.6 Boats failing to comply with any of these Safety Regulations will be scored ENP (Event Nominated Penalty) without a hearing. The penalty shall be 20% of the score for Did Not Finish, rounded to the nearest whole number (0.5 rounded upward). This changes RRS 44, A3, A4 and A5.

## 20. EQUIPMENT AND MEASUREMENT CHECKS

- 20.1 A boat or equipment may be inspected at any time for compliance with the class rules, notice of race and sailing instructions.
- 20.2 When instructed by a Race Official, a boat shall proceed to a designated area for inspection.



## 21. OFFICIAL BOATS

- 21.1 All official boats are numbered by the OA and marked with the OA Burgee.

## 22. RUBBISH DISPOSAL

- 22.1 Boats shall not put rubbish in the water and will always dispose of all rubbish in Bins supplied on shore by Southport Yacht Club.

## 23. PRIZES

- 23.1 A presentation of results will be held after each day of racing at the earliest possible convenience at the OA Main Beach Clubhouse.
- 23.2 Daily prizes will be awarded to 1<sup>st</sup>, 2<sup>nd</sup> and 3<sup>rd</sup> placings for each Division.
- 23.3 Other prizes may be awarded at the discretion of the OA.

## 24. PERPETUAL PRIZES

- 24.1 The Sailing Presentation for each Series of TT and the overall TT Champion for each Division will take place in the OA's Clubhouse after each Sailing Season.
- 24.2 The Overall TT Club Champion for the Sailing Season within each Division will be determined using the combined results from the Winter, Spring and Summer twilight series.
- 24.3 The skipper/owner of the boat must be a current financial member of the OA and their yacht registered with OA.

## 25. DISCLAIMER OF LIABILITY

- 25.1 All those taking part in races conducted by the OA do so at their own risk and responsibility.
- 25.2 The OA, any sponsor and any party involved in the organisation of any event disclaims any and responsibility for any loss, damage, injury to persons and/or things, both ashore and at sea, as a consequence of participation in any way in the races covered by these sailing instructions.
- 25.3 Attention is drawn to RRS 3 which states: "The responsibility for a boat's decision to participate in a race or to continue racing is hers alone."

## 26. INSURANCE

- 26.1 Each participating boat shall be insured with valid third-party liability insurance with a minimum cover of \$10M (AUD).

## 27. MEDIA RIGHTS

- 27.1 In participating in the TT, a competitor grants to the OA and the sponsors, the right in perpetuity, to make, reproduce, edit, use and show, from time to time and at their discretion, any motion pictures, still pictures and live, taped or film television and other reproductions of him/ her taken during the Sailing Season and to use his / her likeness, voice, name and any other information in any material related without compensation.



## 28. FURTHER INFORMATION

28.1 Should you require further information, please do not hesitate to contact:

### Thursday Twilight Division Representative

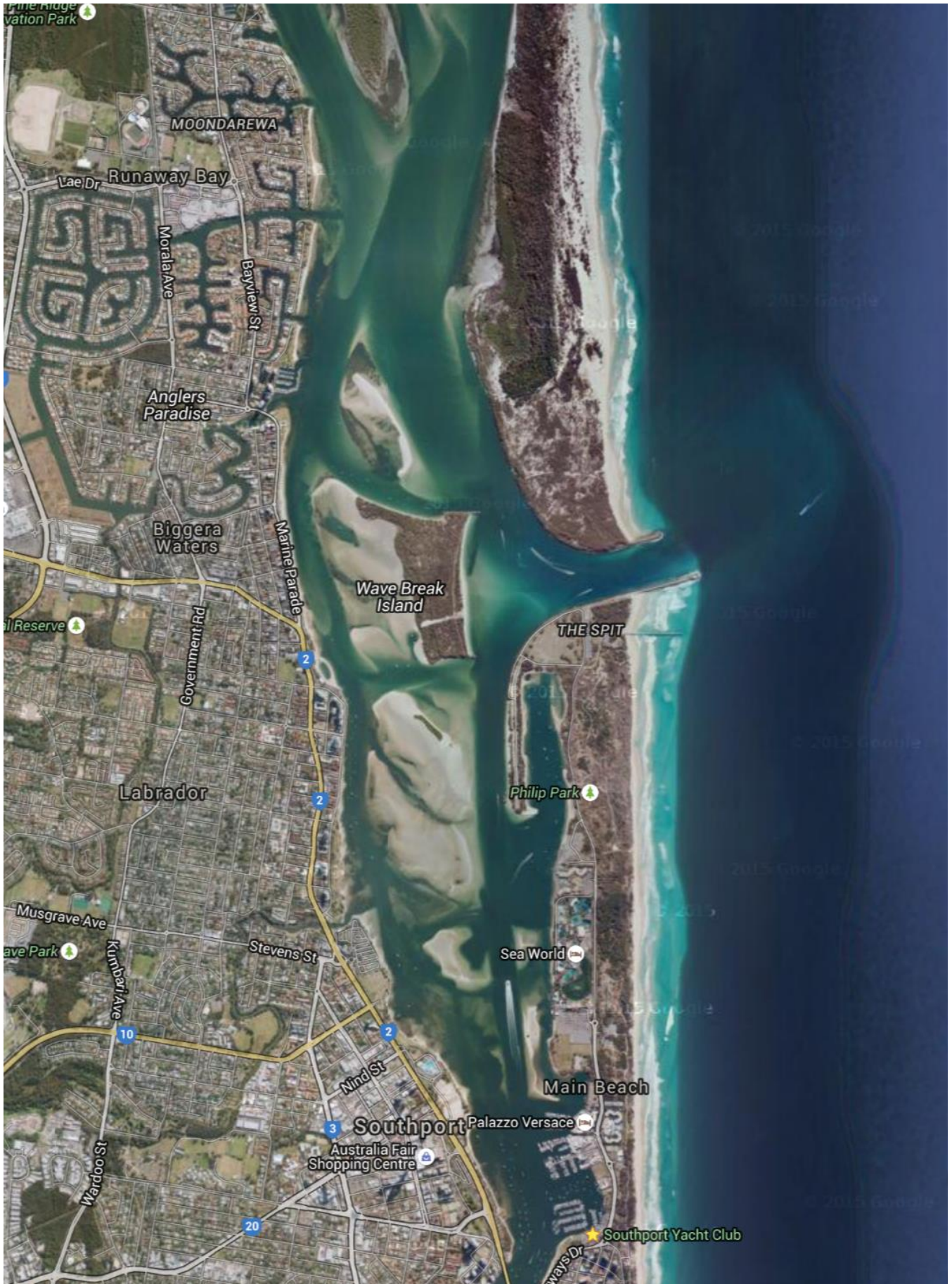
Pete Karlovic                      0400 391 561                      [sailorpk@outlook.com](mailto:sailorpk@outlook.com)  
**Southport Yacht Club Inc. Yachting Office**

Reception                      5537 7030                      [sailing.reception@sycgc.com.au](mailto:sailing.reception@sycgc.com.au)

1 Marina Crescent, HOLLYWELL QLD 4216.



ATTACHMENT A - SYC TWILIGHT RACING AREA





**ATTACHMENT B - SYC TWILIGHT MARKS**

BUOY	DESCRIPTION
<b>START / FINISH</b>	IALA Beacons – As described below or Orange and Black Top inflatable cylinder
<b>Barging Buoy</b>	Pink teardrop

DESIGNATED MARKS	LOCATION / DESCRIPTION	APPROX. GPS COORDINATES (WGS84 Datum)
<b>Wave-Break Start 1 (WBS1)</b>	Between first Port/Starboard Laterals (From the South near southern end of Carters Banks)	27° 55.7'S   153° 25.1'E
<b>Wave-Break Start 2 (WBS2)</b>	Between Second Port/Starboard Laterals (North to WBS1)	27° 55.3'S   153° 24.9'E
<b>Wave-Break Finish (WBF)</b>	Between Port Lateral & Special Mark (Yellow cross)	27° 56.4'S   153° 25.3'E
<b>Main Beach Start / Finish</b>	Port/Starboard Laterals (Opposite SYC D arm jetty)	27° 58.3'S   153° 25.4'E
<b>C</b>	Crab Is Port Lateral	27° 54.5'S   153° 24.9'E
<b>E</b>	SYC Mark (Inflatable Cylinder Buoy)	27° 55.1'S   153° 24.7'E
<b>F</b>	Deep Hole Starboard Lateral	27° 55.0'S   153° 24.8'E
<b>G</b>	South Stradbroke Starboard Lateral	27° 55.8'S   153° 25.3'E
<b>H</b>	Seaway East Cardinal	27° 56.2'S   153° 25.3'E
<b>J</b>	South Stradbroke Port Lateral	27° 55.7'S   153° 25.018'E

**ATTACHMENT C - SYC TWILIGHT MARKS MAP**

SEE NEXT PAGE FOR MAP

See enlargement **G**  
Runaway Bay Marina

RUNAWAY BAY

Runaway Bay Marina

Caution - sea planes use this area.

STRADBROKE ISLAND

See enlargement **H**  
Bayview Harbour

BIGGERA WATERS

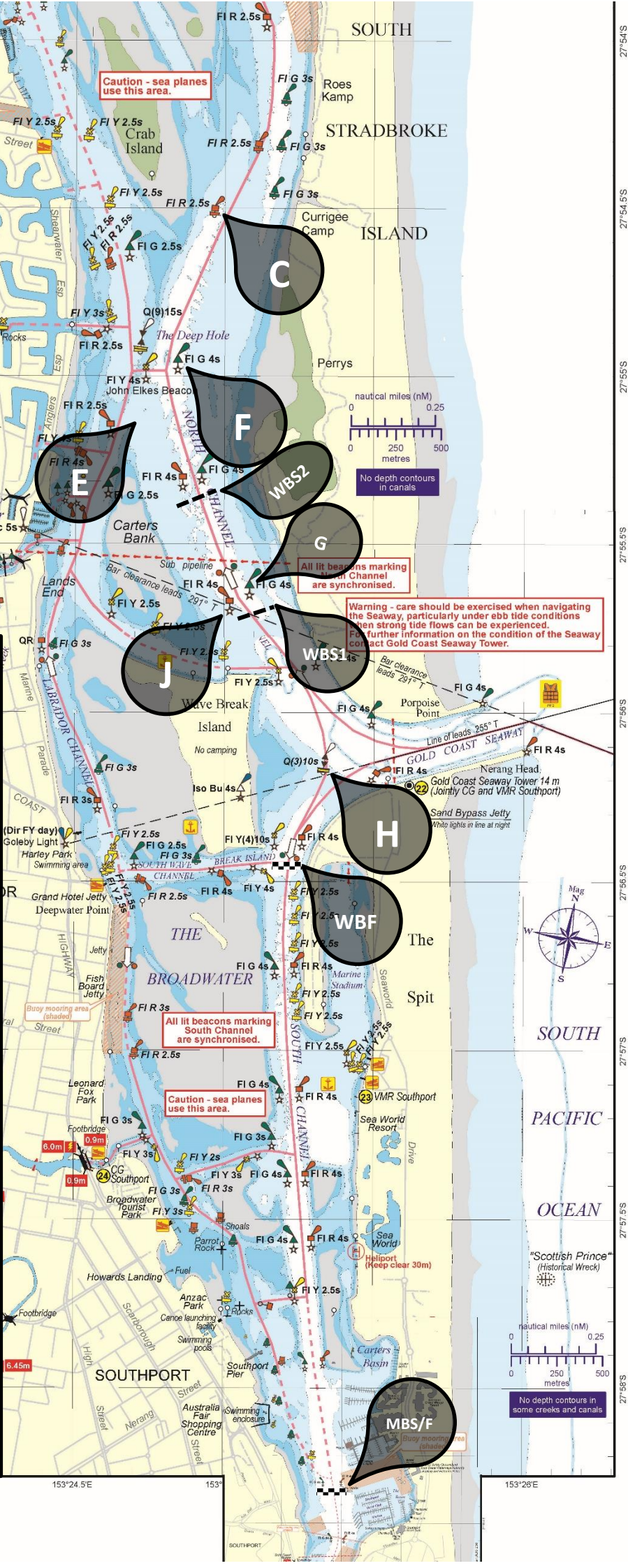
All lit beacons marking South Channel are synchronised.

Warning - care should be exercised when navigating the Seaway, particularly under ebb tide conditions when strong tide flows can be experienced. For further information on the condition of the Seaway contact Gold Coast Seaway Tower.

**MARKS LOCATION / DESCRIPTION**

<b>WBS1</b>	Between first Port/Starboard Laterals (From the South near southern end of Carters Banks)
<b>WBS2</b>	Between Second Port/Starboard Laterals (North to WBS1)
<b>WBF</b>	Between Port Lateral & Special Mark (Yellow cross)
<b>MBS/F</b>	Port/Starboard Laterals (Opposite SYC D arm jetty)
<b>C</b>	Crab Is Port Lateral
<b>E</b>	SYC Mark (Inflatable Cylinder Buoy)
<b>F</b>	Deep Hole Starboard Lateral
<b>G</b>	South Stradbroke Starboard Lateral
<b>H</b>	Seaway East Cardinal
<b>J</b>	South Stradbroke Port Lateral

REFER ATTACHMENT B FOR GPS COORDINATES



153°24'E 153°24.5'E 153°

153°28'E

27°54.5'S 27°55'S 27°56'S 27°56.5'S 27°57'S 27°57.5'S 27°58'S

0 0.25  
0 250 500  
metres

No depth contours in some creeks and canals



## ATTACHMENT D - SYC TWILIGHT COURSES &amp; MARK ROUNDINGS

COURSE (Numeral Pennant)	MARK ROUNDINGS	WIND
1	DIV 1- MBS – H – F(S) – C – E – H – F(S) – C – F – H(S) WBF DIV 2- MBS – H – E – G – C – H(S) - WBF	SOUTHERLY
2	DIV 1 – MBS – H – F(S) – C – E – J – F(S) – C – F – H(S) - WBF DIV 2 – MBS – H – C – E – G – E – H(S) - WBF	SOUTHERLY
3	DIV 1 – MBS – H – E – J – F(S) – C – E – H(S) - WBF DIV 2 – MBS – H – F(S) – G – E – H(S) - WBF	SOUTHERLY
4	DIV 1 – MBS – H – F(S) – C – E – H – F(S) – C – E – H(S) - WBF DIV 2 – MBS – H – E – J – C – H(S) - WBF	SOUTHERLY
5	DIV 1 – MBS – H – F(S) – C – E – J – F(S) – C – F – H(S) - WBF DIV 2 – WBS – E – J – C – E – H(S) WBF	SOUTHERLY
6	DIV 1 – WBS – F(S) – C – F – H – F(S) – C – F – H(S) - WBF DIV 2 – WBS – E – J – C – E – H(S) - WBF	NORTHERLY
7	DIV 1 – WBS – E(S) – C – F – J – F(S) – C – F – H(S) - WBF DIV 2 – WBS – E(S) – F(S) – G – E – H(S) - WBF	NORTHERLY
8	DIV 1 – WBS – F(S) – C – J – F(S) – C – F – H(S) – MBF DIV 2 – WBS – E(S) – C – G – E(S) – H(S) – MBF	NORTHERLY
9	DIV 1 – WBS – F(S) – C – F – H – E – H(S) – MBF DIV 2 – WBS – E(S) – F(S) – J(S) – E – H(S) – MBF	NORTHERLY
10	OFFSHORE- To be communicated on the day	

**NB:** ALL MARKS TO BE LEFT/PASSED TO PORT UNLESS INDICATED BY (S) – IN WHICH CASE MARKS ARE TO BE LEFT/PASSED TO STARBOARD.



**ATTACHMENT E - DECLARATION**

To: the Sailing Manager  
 SOUTHPORT YACHT CLUB.  
 Phone (07) 5537 7030, **Mobile 0475 434 800**, [sailing.officer@sycgc.com.au](mailto:sailing.officer@sycgc.com.au)

<b>BOAT NAME</b>		<b>SAIL NUMBER</b>	
------------------	--	--------------------	--

I declare that during the race the following Rules were NOT observed and / or Infringements occurred and / or Penalties taken, with an explanation given as follows:


Witnessed by (Boat Name/s, Skipper/Crew Name/s):


Name of Person-In-Charge: \_\_\_\_\_ Date: \_\_/\_\_/\_\_

Signature of Person-In-Charge: \_\_\_\_\_.





## PARENTAL CONSENT & INDEMNITY FORM

For Participants under the age of 18

Event Details/Name:	THURSDAY TWILIGHT DIVISION	RACE:
<b>Participant Details:</b>		
First Name: _____	Surname: _____	
Email: _____	Mobile: _____	
Please note any medical conditions which are relevant for this event:		
_____		

<b>Parent/Guardian Details:</b>		
Full Name: _____	Relationship to the Child: _____	
Email: _____	Phone: _____	
Address: _____	State: _____	P/Code: _____

### PARENTAL CONSENT & INDEMNITY

**Parental Consent:** I give permission for my child to attend and participate in the abovementioned Southport Yacht Club event. **Indemnity:** I understand that while every reasonable precaution will be undertaken to ensure the protection of my child, I hereby release Southport Yacht Club, authorised staff and volunteers from any and all liability in the event of any injury, accident, misfortune, damage or loss that may occur to my child and/or their property while present at the aforementioned Southport Yacht Club event. Further, I indemnify Southport Yacht Club, authorised staff and volunteers from and against all loss, including legal expenses, connected with or arising from any claims or demands in relation to my child's attendance at the event. I agree and understand that Southport Yacht Club, authorised staff and volunteers reserve the right to exercise discretion to refuse to register any participant upon medical and/or other grounds without providing a detailed reason for doing so. **Medical Treatment Consent:** I give permission for Southport Yacht Club to obtain emergency medical, hospital or ambulance assistance and/or treatment for my child at any time they consider necessary. I understand that every effort will be made for myself to be notified before instituting such procedures. I acknowledge that I will be liable for any medical, hospital or ambulance expenses incurred in my child's treatment and I agree to pay those expenses. **Privacy Declaration:** I understand that Southport Yacht Club may collect information about my child in accordance with their Privacy Policy, and that this information may be disclosed to certain parties it engages in this event. I consent to these details being used by Southport Yacht Club for the promotion of future events and resources.

Full Name: \_\_\_\_\_ Signature: \_\_\_\_\_ Date: \_\_\_\_\_