



SOUTHPORT YACHT CLUB  
GOLD COAST | AUSTRALIA

# BRIDGE TO NO BRIDGE

**Asahi**  
BEVERAGES

2024

## SAILING INSTRUCTIONS

SATURDAY 12<sup>TH</sup> TO SUNDAY 13<sup>TH</sup> OCTOBER 2024





## **ORGANISING AUTHORITY**

**Southport Yacht Club Inc  
Hollywell Sailing Squadron**

**1 Marina Crescent,  
Hollywell QLD 4216  
+617 5537 7030**

**[southportyachtclub.com.au](http://southportyachtclub.com.au)**



**TABLE OF CONTENTS**

..... 1

1. RULES ..... 4

2. CHANGES TO SAILING INSTRUCTIONS..... 4

3. NOTICES TO COMPETITORS..... 4

4. SIGNALS MADE ASHORE ..... 4

5. SCHEDULE..... 5

6. CLASS FLAG ..... 5

7. RACING AREA..... 5

8. THE COURSES..... 5

9. MARKS..... 6

10. THE START ..... 6

11. THE FINISH ..... 6

12. SHORTENING THE COURSE AFTER THE START ..... 6

13. PENALTY SYSTEM ..... 6

14. AREAS THAT ARE OBSTRUCTIONS ..... 6

15. THE FINISH ..... 7

16. PENALTY SYSTEM ..... 7

17. TIME LIMITS ..... 7

18. HEARING REQUESTS ..... 7

19. SCORING ..... 8

20. SAFETY REGULATIONS ..... 8

21. REPLACEMENT OF CREW OR EQUIPMENT ..... 8

22. OFFICIAL BOATS..... 9

23. RADIO COMMUNICATION ..... 9

24. PRIZES ..... 9

25. DISCLAIMER OF LIABILITY..... 9

25. INSURANCE ..... 10

26. FURTHER INFORMATION..... 10

27. ATTACHMENT A ..... 11

## 1. RULES

- 1.1 The races will be governed by the current rules as defined in the Racing Rules of Sailing (RRS).
- 1.2 The Special Regulations of Australian Sailing: Part 1 (AS) shall apply for trailable and fixed keel yachts.
- 1.3 The relevant Class Rules (as applicable) shall apply.
- 1.4 The *International Regulations for the Prevention of Collisions at Sea 1972* (COLREGS) shall apply at all times. The *Racing Rules of Sailing* (RRS) will apply only between those ships that are participating in the event, for the duration of the event. Should interaction occur with non-participating ships, then COLREGS shall apply to all ships and shall over-ride all other rules. This is a condition imposed by Gold Coast Waterways Authority within our Aquatic Event Authority.
- 1.5 RRS Appendix T – Arbitration applies.
- 1.6 All competitors are reminded of RRS 1.1 Helping Those in Danger; A boat or competitor shall give all possible help to any person or vessel in danger.
- 1.7 When conflict occurs between the Notice of Race and the Sailing Instructions, the rules of the Sailing Instructions shall prevail. This changes RRS 63.7.

## 2. CHANGES TO SAILING INSTRUCTIONS

Any change to the Sailing Instructions will be posted before 0900 on the day it will take effect, except that any change to the Schedule of Races will be posted by 1800 on the day before it will take effect.

## 3. NOTICES TO COMPETITORS

Notices to competitors will be posted on the official notice board located at Southport Yacht Club, Hollywell, on the notice board and on the Southport Yacht Club website <https://www.southportyachtclub.com.au/sailing-office-notice-board/>.

## 4. SIGNALS MADE ASHORE

- 4.1 Signals made ashore will be displayed at the Hollywell Flag Race Tower.
- 4.2 When flag AP is displayed ashore, '1minute' is replaced with 'not less than 15 minutes' in the race signal AP.

## 5. SCHEDULE

DATE	EVENT	TIME
<b>Wednesday 9<sup>th</sup> October</b>	Entries Close	Midnight
<b>Saturday 12<sup>th</sup> October</b>	Compulsory Skipper's Briefing at SYC Hollywell (Division 1 & 2)	0930 hours
	Warning Signal Race 1 - Division 1	Not before 1055 hrs
	Race 1 Presentation at Hollywell	ASAP after racing
<b>Sunday 13<sup>th</sup> October</b>	Compulsory Skipper's Briefing @ Hollywell (Division 1 & 2)	0930 hours
	Warning Signal – Race 2 - Division 1	Not before 1055hrs
	Presentation at SYC Hollywell	ASAP after racing

## 6. CLASS FLAG

DIVISION	CLASS	FLAG
<b>Division 1</b>	Inshore Keelboats/Trailable's/OTBC	Numeral Pennant One (1)

## 7. RACING AREA

The racing area shall be the Gold Coast Broadwater, between Wavebreak Island and the Northern End of "The Measured Mile".

## 8. THE COURSES

- 8.1 The course to be sailed on Saturday the 12<sup>th</sup> will be as follows:  
Advised at Briefing
- 8.2 The course to be sailed on Sunday the 13<sup>th</sup> will be as follows:  
Advised at Briefing
- 8.3 Please refer to Attachment A for further information and course maps.
- 8.4 An Alternate course may be described at the Compulsory Skipper's Briefing, should conditions not be suitable to courses described above.



## 9. MARKS

- 9.1 The FINISH Mark for Race 1 & 2 will be a blue inflatable cylinder with SYC logo.
- 9.2 The START Mark for Race 1 & 2 will be a blue inflatable cylinder with SYC logo.
- 9.3 When a navigation lateral mark is nominated as a mark of the course it shall be rounded with a minimum clearance distance of 3 metres so as to comply with the Aquatic Permit Special Conditions imposed by local Regulatory Authorities.

## 10. THE START

- 10.1 Races will be started using RRS Rule 26 with the Warning Signal given five (5) minutes before the Starting Signal.
- 10.2 The Start Line for Race 1 & 2 will be between a staff displaying an Orange flag on the Committee Boat and the SYC Control Tower at Hollywell.
- 10.3 A boat starting later than ten (10) minutes after her starting signal will be scored Did Not Start (DNS) without a hearing. This changes Rule A4.1.
- 10.4 Boats whose warning signal has not been made shall avoid the starting area during the starting sequence for other races.

## 11. THE FINISH

- 11.1 For Race 1 & 2 will be between the SYC blue inflatable cylinder & SYC's Control Tower, Hollywell.

## 12. SHORTENING THE COURSE AFTER THE START

The Finish Line may be between the Committee Boat displaying the Shortened Course Flag (Code Flag "S") and a Lateral Beacon or prominent feature of Race Committee's choice.

## 13. PENALTY SYSTEM

For all divisions RRS 44.1 is changed so that the Two-Turns Penalty is replaced by the One-Turn Penalty, including one tack and one gybe in the same direction.

## 14. AREAS THAT ARE OBSTRUCTIONS

The following areas are designated as obstructions:

- 14.1 Crab Island West Cardinal Beacon is an obstruction.
- 14.2 Except where a IALA mark is included as a Mark of the course, areas outside of the intended channel(s) defined by the IALA marks north of and including the Crab Island West Cardinal "Q(9)15s" are considered an obstruction. For the purposes of this definition, it shall be considered that a competitor has remained clear of the obstruction provided they have left all IALA marks to their required side.
- 14.3 The finish line is an obstruction, unless finishing. Boats crossing the finish line incorrectly will be scored Did Not Finish (DNF) without a hearing. This changes RRS 35, A4 and A5. Boats may cross the finish line after they have completed the race, however boats are asked to take care not to impede or affect the boats that have yet to finish. When finishing to the South boats are requested to round the finish buoy when returning to the Hollywell dock so as not to obscure the finish line from the Tower.
- 14.4 Southport Yacht Club Inc. Hollywell pontoon is an obstruction.
- 14.5 The 6 knot Special Marks North of the Crab Island West Cardinal Beacon are not obstructions.

## 15. THE FINISH

- 15.1 The finishing line will be between a Blue board on the Race Control Tower and the course side of the finishing mark.

## 16. PENALTY SYSTEM

- 16.1 Rule 44.1 is changed so that the Two-Turns Penalty is replaced by a One-Turn Penalty, including one tack and one gybe in the same direction.

## 17. TIME LIMITS

- 17.1 Boats failing to finish within ninety (90) minutes after the first boat in its division sails the course and finishes will be scored Did Not Finish (DNF) without a hearing. This changes rules 35, A4 and A5.
- 17.2 Boats scored Did Not Finish (DNF) may be allocated a finishing position at the discretion of the Race Committee.

## 18. HEARING REQUESTS

- 18.1 Boats intending to protest in Race 1 shall inform the Race Committee immediately after finishing by approaching the starboard side of the Start Boat after finishing and hailing the protested boat's sail number. This changes RRS 61.1
- 18.2 Boats intending to protest in Race 2 shall inform the Race Committee immediately after finishing by approaching the SYC Hollywell Race Control Tower after finishing and hailing the protested boat's sail number. This changes RRS 61.1

- 18.3 Protest forms are available at the Sailing Office at the Hollywell Sailing Squadron. Protest forms will also be available on the committee boat once the last boat has finished. Protests shall be delivered there within the Protest Time Limit.
- 18.4 The Protest Time Limit is thirty (30) minutes after the last boat has finished in your division. The same protest time limit applies to all protests by the Race Committee and Protest Committee and to request for redress. This changes Rules 61.3 and 62.2.
- 18.5 Notices will be posted within thirty (30) minutes of the Protest Time Limit to inform competitors of hearings in which they are parties or named as witnesses. Hearings will be held in the Sailing Office (located at the southwest corner of the clubhouse) at a date to be notified as soon as possible.
- 18.6 Notices of protests by the Race Committee or Protest Committee will be posted to inform boats under Rule 61.1(b).
- 18.7 RRS Appendix T – Arbitration applies.

## 19. SCORING

The Low Point Scoring System, Appendix A2 will apply.

## 20. SAFETY REGULATIONS

- 20.1 Off the Beach Catamarans shall sign on for Race 1 and Race 2 using the supplied Sign ON sheets provided prior to getting on the water.
- 20.2 Keelboats shall sign on before 1150hrs for each race via VHF09, confirming Boat Name, Sail Number and the number of persons on board (POB).
- 20.3 All Competitors are deemed to have signed off upon finishing each race.
- 20.4 Any Competitor retiring from any Race, must inform the Race Committee as soon as possible.
- 20.5 No anchor shall protrude forward of the bow whilst racing.
- 20.6 Any competitor failing to abide with the above Safety Regulations will be given a 10-minute elapsed time Score Penalty per failure without hearing. This changes rule 44.3

## 21. REPLACEMENT OF CREW OR EQUIPMENT

- 21.1 Substitution of damaged or lost equipment will not be allowed unless authorized by the race committee. Requests for substitution shall be made to the committee at the first reasonable opportunity.
- 21.2 Failing to notify the SYC Sailing Office of changes to boats configuration or rating, may result in protest by the Race Committee. Penalties for these breaches may be less than disqualification if the Protest Committee so decides.



21.25 Competitors must provide a clearly identifiable sail number on their mainsail as noted on the Yachts Race Entry Form. A failure to carry clearly distinguishable sail numbers may result in a yacht being scored as 'Did Not Start' (DNS) without a hearing. This shall not provide grounds for redress.

## 22. OFFICIAL BOATS

21.1 SYC Support Vessels can be identified by either the SYC Logo displayed on the vessel or a SYC Burgee.

## 23. RADIO COMMUNICATION

22.1 A boat shall neither make radio transmission while racing nor receive radio communications not available to all boats with a VHF radio.

## 24. PRIZES

24.1 Prizes will be awarded to Line Honours, First, Second and Third Place per Division for each race and the overall results for the combined Cord'Times of Race 1 & Race 2.

24.2 The Bridge to No Bridge Perpetual Trophy will be awarded to the 1st place winner of Division 1 of the overall results for the combined Cord'Times of Race 1 & Race 2 and will be presented at SYC Hollywell as soon as possible after racing on the 13<sup>th</sup> October 2024.

24.3 Other Prizes may be given at the discretion of the Organising Authority.

## 25. DISCLAIMER OF LIABILITY

24.1 All those taking part in races conducted by Southport Yacht Club do so at their own risk and responsibility.

24.2 The Southport Yacht Club, any sponsor and any party involved in the organisation of any event disclaims any and every responsibility for any loss, damage, injury to persons and/or things, both ashore and at sea, as a consequence of participation in any way in the races covered by these sailing instructions.

24.3 Attention is drawn to RRS 3 which states: "The responsibility for a boat's decision to participate in a race or to continue racing is hers alone."

## 25. INSURANCE

- 25.1 Each participating boat shall be insured with valid third-party liability insurance, with a minimum cover of \$10M (AUD) for any one incident. By taking part in a race all boat owners are deemed to have made a declaration that they have such cover.

## 26. FURTHER INFORMATION

Contact the Sailing Office

Southport Yacht Club, Hollywell Sailing Squadron,

1 Marina Crescent, Hollywell, Queensland, 4216.

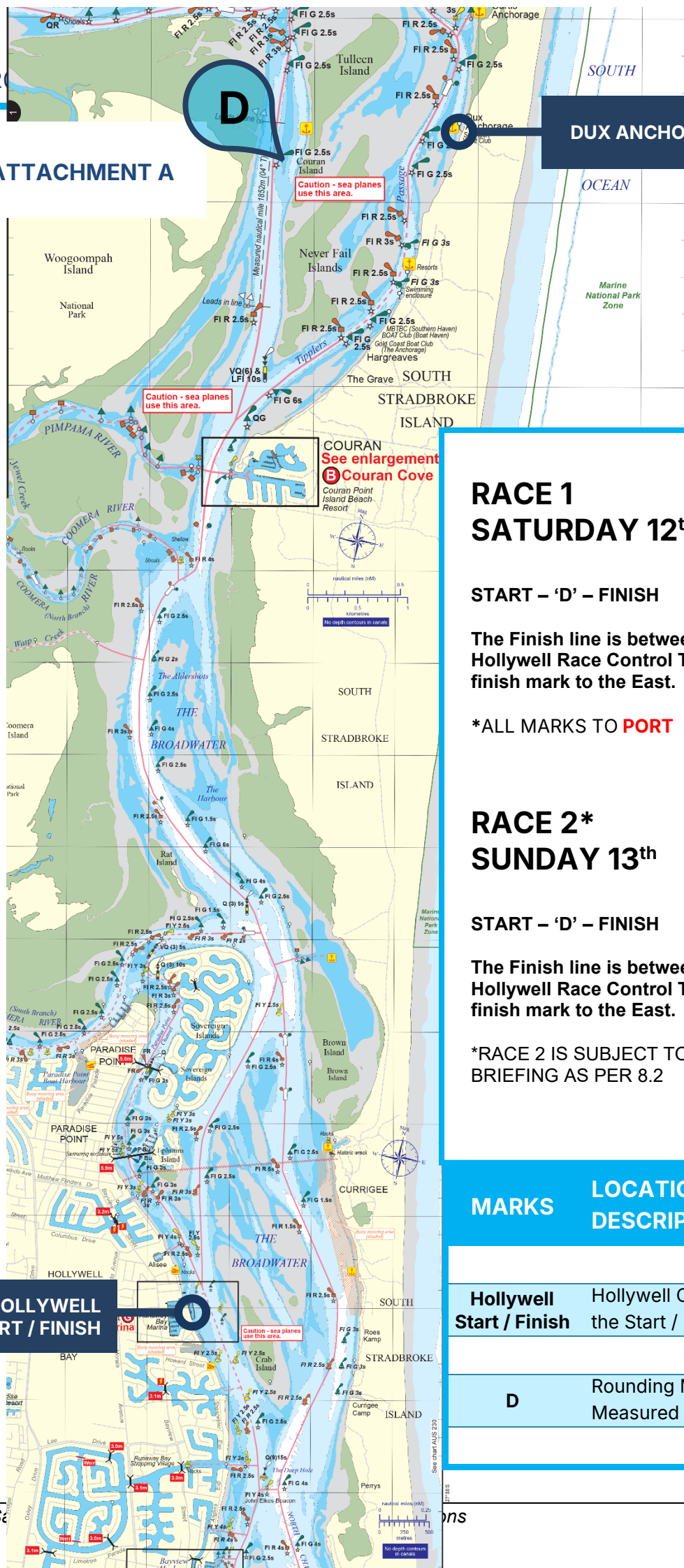
Phone: (07) 5537-7030.

E-Mail [racing.admin@sycgc.com.au](mailto:racing.admin@sycgc.com.au)



20

27. ATTACHMENT A



DUX ANCHORAGE

Caution - sea planes use this area.

Caution - sea planes use this area.

COURAN See enlargement  
B Couran Cove

**RACE 1  
SATURDAY 12<sup>th</sup>**

**START – ‘D’ – FINISH**

The Finish line is between the Hollywell Race Control Tower and the finish mark to the East.

\*ALL MARKS TO **PORT**

**RACE 2\*  
SUNDAY 13<sup>th</sup>**

**START – ‘D’ – FINISH**

The Finish line is between the Hollywell Race Control Tower and the finish mark to the East.

\*RACE 2 IS SUBJECT TO CHANGE AT BRIEFING AS PER 8.2

**HOLLYWELL  
START / FINISH**

**MARKS LOCATION / DESCRIPTION**

<b>Hollywell Start / Finish</b>	Hollywell Control Tower & the Start / Finish Buoy
<b>D</b>	Rounding Mark in Measured Mile