



SOUTHPORT YACHT CLUB

THURSDAY TWILIGHT DIVISION



SAILING INSTRUCTIONS

2026 - 2027



TT - THURSDAY TWILIGHT DIVISON SCHEDULE 2026-2027

Winter 1/13	Thursday 7 th May 2026
Winter 2/13	Thursday 14 th May 2026
Winter 3/13	Thursday 21 st May 2026
Winter 4/13	Thursday 28 th May 2026
Winter 5/13	Thursday 4 th May 2026
Winter 6/13	Thursday 11 th June 2026
Winter 7/13	Thursday 18 th June 2026
Winter 8/13	Thursday 25 th June 2026
Winter 9/13	Thursday 2 nd July 2026
Winter 10/13	Thursday 9 th July 2026
Winter 11/13	Thursday 16 th July 2026
Winter 12/13	Thursday 27 th August 2026
Winter 13/13	Thursday 3 rd September 2026
Spring 1/14	Thursday 10 th September 2026
Spring 2/14	Thursday 17 th September 2026
Spring 3/14	Thursday 24 th September 2026
Spring 4/14	Thursday 1 st October 2026
Spring 5/14	Thursday 8 th October 2026
Spring 6/14	Thursday 15 th October 2026
Spring 7/14	Thursday 22 nd October 2026
Spring 8/14	Thursday 29 th October 2026
Spring 9/14	Thursday 5 th November 2026
Spring 10/14	Thursday 12 th November 2026
Spring 11/14	Thursday 19 th November 2026
Spring 12/14	Thursday 26 th November 2026
Spring 13/14	Thursday 3 rd December 2026
Spring 14/14	Thursday 10 th December 2026
FUN RACE/XMAS PARTY	Thursday 17 th December 2026
Summer 1/14	Thursday 14 th January 2027
Summer 2/14	Thursday 21 st January 2027
Summer 3/14	Thursday 28 th January 2027
Summer 4/14	Thursday 4 th February 2027
Summer 5/14	Thursday 11 th February 2027
Summer 6/14	Thursday 18 th February 2027
Summer 7/14	Thursday 25 th February 2027
Summer 8/14	Thursday 4 th March 2027
Summer 9/14	Thursday 11 th March 2027
Summer 10/14	Thursday 18 th March 2027
Summer 11/14	Thursday 1 st April 2027
Summer 12/14	Thursday 8 th April 2027
Summer 13/14	Thursday 15 th April 2027
Summer 14/14	Thursday 22 nd April 2027



THURSDAY TWILIGHT DIVISION SERIES FEES

WHOLE SEASON DISCOUNT (41 Races)	\$475.00
WINTER TWILIGHT SERIES (13 Races)	\$195.00
SUMMER TWILIGHT SERIES (14 Races)	\$210.00
SPRING TWILIGHT SERIES (14 Races)	\$210.00
Casual Race Entry (per race day)	\$25.00 SYC Member \$35.00 Non SYC Member (max entry 3)

ADDITIONAL SYC SPECIAL EVENTS

Event / Regatta Name	Date
JULIAN ROCKS (Rescheduled)	Saturday 9 th May 2026
FLAT ROCK YACHT RACE	Saturday 6 th June 2026
GCCM GOLD COAST MACKAY YACHT RACE	Thursday 30 th July 2026
SAIL PAST & BLESSING THE FLEET	Saturday 5 th September 2026
BREAKING OF THE FLAG CEREMONY & DA\$H 4 CA\$H	Sunday 6 th September 2026
THE YACHT SALES CO. SAIL PARADISE REGATTA	Saturday 3 rd – Monday 5 th October 2026
COOK ISLAND YACHT RACE	Sunday 1 st November 2026
JOHN MACNAMARA MEMORIAL RACE	Saturday 21 st & Sunday 22 nd November 2026
TED ELKES MEMORIAL REGATTA	Saturday 23 rd & Sunday 24 th January 2027
SURF TO CITY	Saturday 6 th February 2027
JULIAN ROCKS YACHT RACE	Saturday 13 th March 2027
LADIES DAY RACE	Saturday 20 th March 2027
DUX BIRTHDAY CELEBRATIONS	Sunday 21 st March 2027
BURLEIGH BASH	Saturday 24 th April 2027



TABLE OF CONTENTS

1. RULES	5
2. ELIGIBILITY	5
3. DIVISIONS	5
4. COMMUNICATION	5
5. CHANGES TO SAILING INSTRUCTIONS	6
6. SCHEDULE OF RACES	6
7. SAIL RESTRICTIONS.....	6
8. RACING AREA	6
9. THE COURSES	6
10. MARKS	7
11. THE START	7
12. SHORTENED COURSE	8
13. THE FINISH	8
14. PENALTY SYSTEM & PENALTIES	8
15. TIME LIMIT	8
16. PROTESTS	8
17. SCORING	9
18. SAFETY REGULATIONS	9
19. EQUIPMENT AND MEASUREMENT CHECKS.....	9
20. OFFICIAL BOATS	9
21. RUBBISH DISPOSAL.....	9
22. PRIZES	10
23. PERPETUAL PRIZES	10
24. DISCLAIMER OF LIABILITY	10
25. INSURANCE	10
26. MEDIA RIGHTS.....	10
27. SYC SAILING COMMITTEE	11
28. SYC SAILING CONTACTS	11
29. PARENT CONSENT FORM	11

INVITATION

Southport Yacht Club’s Thursday Twilight Division is designed for fun and social sailing on the beautiful waters of the Broadwater and between Main Beach and Runaway Bay on the Gold Coast and for Division 1 the magical open waters Offshore. Combining this with spectacular sunsets, magnificent scenery and friendly healthy competition, provides an unforgettable experience that will be thoroughly enjoyed and shared by all.



1. RULES

- 1.1 The Organising Authority (OA) is Southport Yacht Club Inc.
- 1.2 Races will be governed by the Racing Rules of Sailing 2025–2028 and the Prescriptions of Australian Sailing.
- 1.3 For a race for a division to be sailed, a minimum of three (3) boats intending to start in that division shall be required.
- 1.4 Where fewer than three boats have declared an intention to start in a division, the Race Committee may, at its discretion, decide not to start that division.
- 1.5 Division 1 boats shall comply with Australian Sailing Special Regulations Part 1 – Category 4.
- 1.6 Division 2 boats shall comply with Australian Sailing Special Regulations Part 1 – Category 7 Plus.
- 1.7 Compliance shall be current for the duration of the season and certified by an Australian Sailing accredited Equipment Auditor.
- 1.8 Division 1 races may be conducted offshore at the discretion of the Race Committee. When an offshore course is planned, details will be communicated via the TT race briefing.
- 1.9 All boats shall comply with the Transport Operations (Marine Safety) Act 1994 and Regulation. In the event of a reportable Marine Incident, the SYC Sailing Officer is to be notified as soon as practical, but no later than 2 hours after the last boat has finished, a copy of the MSQ Marine Incident Report is required to be lodged with the OA at the same time it is lodged with Maritime Safety Queensland.
- 1.10 The International Regulations for Preventing Collisions at Sea (COLREGS) apply at all times. The Racing Rules of Sailing apply only between boats racing. When a boat racing encounters a vessel not racing, COLREGS shall apply and shall take precedence. This is a condition governed by local Statutory Authorities for the OA's approved Aquatic Event Permit.
- 1.11 RRS Appendix T – Arbitration applies.
- 1.12 Compliance with SYC's current Sailing Season Policy.
- 1.13 All competitors are reminded of RRS 1.1 Helping Those in Danger; A boat or competitor shall give all possible help to any person or vessel in danger.

2. ELIGIBILITY

- 2.1 Thursday Twilight Division (TT) races are open to all Monohull and Multihull Yachts (both trailable and fixed keel) on the register of a yacht or sailing club affiliated with AS.
- 2.2 A boat shall have a minimum of 2 crew.
- 2.3 Off the Beach classes are not permitted to sail in TT races.
- 2.4 All boats must be entered via the Top Yacht entry system no later than 1400hours on each Tuesday prior to race day.

3. DIVISIONS

There will be two (2) divisions for the Summer, Winter and Spring Series. Entrants will be allocated into divisions by the Race Committee, in consultation with the SYC Handicap Committee, prior to the commencement of each series. Division allocations will not be changed during a series except where the Race Committee, after consultation with the SYC Handicap Committee, determines that a change is necessary to preserve fairness and equity within a division.

4. COMMUNICATION

- 4.1 On each race day, the Organising Authority intends to issue a Thursday Twilight Series Briefing & Communication Notice by email to the Primary Contact nominated in the boat's TopYacht entry.
- 4.2 The Primary Contact must respond to the Communication Notice no later than 1400 hours on race day, confirming the boat's intention to race.



- 4.3 The contact details of the Primary Contact shall be those recorded in the boat's TopYacht entry. It is the responsibility of the skipper and/or Person in Charge to ensure these details are correct and up to date.
- 4.4 A boat that has not confirmed its intention to race in accordance with SI 4.2 may, at the discretion of the Race Committee, be excluded from starting.
- 4.5 On the water, the Race Committee intends to communicate with competitors on:
 - (a) VHF Channel 10 for Division 1; and
 - (b) VHF Channel 09 for Division 2.Failure to receive a communication shall not be grounds for redress.

5. CHANGES TO SAILING INSTRUCTIONS

Changes to Sailing Instructions (SI) will be emailed and sent via SMS to competitors on the TT Distribution List and posted on the OA's website on the Official Noticeboard and the TT page not less than sixty (60) minutes before the scheduled start time.

6. SCHEDULE OF RACES

The schedule of races is in accordance with the listed schedule at the beginning of these SI.

7. SAIL RESTRICTIONS

- 7.1 The difference between a headsail and a spinnaker is that the width of a headsail, measured between the midpoints of its luff and leech, is less than 75% of the length of its foot.
- 7.2 The use of a Gennaker, Blooper, Spinnaker, Code Zero or any other purpose-built downwind sail is prohibited.
- 7.3 The headsail must be fully hanked, or attached by means of a luff groove device, to the forestay.
- 7.4 Spinnaker poles and/or whisker poles are allowed for poling out headsails.
- 7.5 Boats shall use only one mainsail throughout the Race but may change their headsail throughout the Race.
- 7.6 Only 1 headsail to be flown while changing headsails. For boats peeling their headsail, the new headsail must be flown on the same track as the old headsail.
- 7.7 Replacement, substitution or modification of boat configuration - Failure to notify the SYC Sailing Office of changes to boats configuration or performance at least 48 hours prior to racing, including any new sails intended to be used, may result in protest by the Race Committee. This may result in an Event Nominated Penalty (ENP) for noncompliance.

8. RACING AREA

Attachment A – SYC TWILIGHT RACING AREA shows the approximate location of the allocated racing area. The racing area shows two locations one for the Broadwater and the other for Division 1 Offshore racing options.

9. THE COURSES

- 9.1 All Broadwater courses for the season are identified in Attachment C – SYC TWILIGHT COURSES, including the order in which the marks are to be passed and the side on which each mark is to be passed.
- 9.2 The Broadwater Course to be sailed will be indicated by the Course Number numeral Pennant or course board being displayed on the Start Boat.



- 9.3 Should the OA decide to race Div 1 Offshore then the skippers will be notified of the course with the briefing email. The course will nominate the start and finish line and any offshore marks to be rounded and which side the marks are to be rounded.

10. MARKS

- 10.1 All boats shall maintain a safe clearance from all IALA navigation marks. Boats shall not deliberately use IALA marks as rounding marks unless specifically designated.
- 10.2 All boats shall give due consideration to the weather conditions including tidal effect (current) wind conditions and their intended course when passing or rounding an IALA mark.
- 10.3 *Competitors may refer to the Maritime Safety Queensland Boating Maps located at <http://www.msq.qld.gov.au/Boating-maps/Gold-Coast-guides> for detailed maps.
- 10.4 The Wonder Reef area, defined by four yellow special marker buoys, is a prohibited area and an obstruction. A boat shall not enter this area. This changes RRS 19.
Location of Wonder Reef special markers exclusion zone:
- Wonder Reef SW 27 57.805 S 153 27.189 E
 - Wonder Reef SE 27 57 806 S 153 27.434 E
 - Wonder Reef NE 27 57.589 S 153 27.429 E
 - Wonder Reef NW 27 57.593 S 153 27.187 E

11. THE START

- 11.1 **Races will be conducted as pursuit races, with individual start times allocated in accordance with the SYC Sailing Policy by the SYC Handicap Committee and administered by the Race Committee.**
- 11.2 A boat shall start no earlier than her allocated handicap start time. All handicap start times are listed as Australian Eastern Standard Time (AEST).
- 11.3 The first starting signal for racing covered by these sailing instructions shall be:

EVENT SERIES	TIME
Spring Series (Pursuit)	From 1530hrs
Summer Series (Pursuit)	From 1530hrs
Winter Series (Pursuit)	From 1500hrs

- 11.4 All boats shall keep clear of the start line and not sail on the course side within five (5) minutes prior to their allocated handicap start time. Any boat that fails to do so will receive a 20% Event Nominated Penalty (ENP). This shall not be grounds for redress unless the Race Committee is found to have made an error.
- 11.5 The starting line for Thursday Twilight Races will be in accordance with Attachment B – SYC MARKS and Attachment C –
- 11.6 A boat that starts significantly later than her allocated start time may be referred to the SYC Handicap Committee for review in accordance with the SYC Sailing Policy.
- 11.7 Definitions – Racing. A boat is racing from her preparatory signal until she finishes and clears the finishing line and marks or retires, or until the race committee signals a general recall, postponement or abandonment. The preparatory signal for a boat shall be 4 (four) minutes before her allocated handicap start time. This changes RRS26.



12. SHORTENED COURSE

The Race Committee may shorten course at any part of the course. Boats shall finish between the Race Committee vessel displaying Code Flag “S” and a prominent feature of their choice (which may include any laid mark).

13. THE FINISH

The finishing line will be in accordance with Attachment B – SYC MARKS and Attachment C – SYC TWILIGHT COURSES.

14. PENALTY SYSTEM & PENALTIES

- 14.1 RRS 44.1 is changed so that the Two-Turns Penalty is replaced by a One-Turn Penalty.
- 14.2 A boat that uses an engine to avoid danger or to free herself after grounding or collision must declare this to the Race Committee as soon as reasonably possible after the incident.
- 14.3 When an engine has been used in accordance with SI 15.2, the boat shall take a One-Turn Penalty as soon as possible after the incident. This changes RRS 44.1.
- 14.4 Following such an incident, the SYC Handicap Committee may review the boat’s handicap in accordance with the SYC Sailing Policy. Any adjustment to a boat’s handicap for subsequent races shall be for performance management purposes only and shall not constitute a penalty.
- 14.5 A boat using an engine within 1 (one) minute of her start, shall complete a one turn penalty to be taken as soon as possible after the start. A Declaration to the race committee shall be made as soon as possible. The starting handicap for the vessel in the following race shall not be adjusted accordingly. This changes RRS 44, A3.
- 14.6 Event Nominated Penalties (ENP) – Thursday Twilight Division
 - 14.6.1 For Thursday Twilight racing, the Race Committee may apply an Event Nominated Penalty for a breach of a Sailing Instruction that does not involve a breach of Part 2 of the RRS.
 - 14.6.2 An ENP shall be a discretionary scoring penalty of 20% of the boat’s score for Did Not Finish (DNF), rounded to the nearest whole number (0.5 rounded upward).
 - 14.6.3 A boat penalised under this instruction shall not receive any additional penalty for the same incident arising in that race.
 - 14.6.4 The application of an ENP does not prevent a boat from requesting redress or lodging a protest.

15. TIME LIMIT

- 15.1 The Winter Series time limit for all boats to be finished is 1800 hours.
- 15.2 The Spring Series time limit for all boats to be finished is 1830 hours.
- 15.3 The Summer Series time limit for all boats to be finished is 1830 hours.
- 15.4 A boat that does not finish within the time limit shall be scored TLE (Time Limit Expired). A TLE score shall be the number of boats that finished the race, excluding boats scored DNC, plus three (3) points. This replaces the scoring prescribed by RRS Appendix A5.2.

16. PROTESTS

- 16.1 RRS Appendix T- ARBITRATION applies.
- 16.2 Protest forms are available at the OA’s Main Beach reception, Sailing Office at Hollywell and may also be downloaded from their website. Protests shall be lodged within the Protest Time Limit.
- 16.3 The Protest Time Limit is One Hundred & Twenty (120) minutes after the last boat finishes the race or the race committee signals no more racing today, whichever is later. This also applies to all protests



by the Race Committee and Protest Committee and requests for redress. This changes RRS 61.3 and 62.2.

- 16.4 Boats must notify the Race Officer/Start Boat on water via VHF09 for Division 2 and VHF10 for Division 1 if they intend to protest.

17. SCORING

- 17.1 The low points scoring system of RRS Appendix A.
- 17.2 For a Boat that Did Not Finish (DNF) they shall be scored the number of boats that have signed on for the Race, excluding any casual entries plus 1 point
- 17.3 For a boat that Did Not Compete (DNC) they shall be scored the number of boats that have signed on for the Race, excluding any casual entries plus 3 points.
- 17.4 Four (4) races are required to constitute a series. When fewer than five (5) races have been completed, all scores shall count.
- 17.5 When five (5) to seven (7) races have been completed a boat's series score will be the total of her race scores excluding her worst score.
- 17.6 When eight (8) to eleven (11) races have been completed a boat's series score will be the total of her race scores excluding her two (2) worst scores.
- 17.7 When twelve (12) or more races have been completed a boat's series score will be the total of her race scores excluding her three (3) worst scores.

18. SAFETY REGULATIONS

- 18.1 Division 1 boats shall always maintain a listening watch on VHF10 and Division 2 on VHF09.
- 18.2 All Division 1 boats shall sign on with Race Control via VHF10 and Division 2 on VHF 09 at least five (5) minutes prior to their allocated handicap start time, confirming Boat Name, Sail # and the number of persons on board (P.O.B.).
- 18.3 A boat that retires from a race shall notify Race Control for Division 1 on VHF10 and Division 2 VHF09 as soon as possible.
- 18.4 Unless in use, no part of the anchor may project forward of the bow at any time whilst racing. Anchors must be available for immediate use in the event of an emergency.
- 18.5 Where lifelines complying with AS SR Part 1 Section 3 Rule 3.12 have not been fitted, all crew shall wear a visible life jacket in accordance with AS SR Part 1 Section 5.
- 18.6 Failure to comply with these Safety Regulations may be protested by the Race Committee or penalised by an Event Nominated Penalty in accordance with SI 15.

19. EQUIPMENT AND MEASUREMENT CHECKS

- 19.1 A boat or equipment may be inspected at any time for compliance with the class rules, notice of race and sailing instructions.
- 19.2 When instructed by a Race Official, a boat shall proceed to a designated area for inspection.

20. OFFICIAL BOATS

All official boats are numbered by the OA and marked with the OA Burgee.

21. RUBBISH DISPOSAL

Boats shall not put rubbish in the water and will always dispose of all rubbish in Bins supplied on shore by Southport Yacht Club.



22. PRIZES

- 22.1 A presentation of results will be held after each day of racing at the earliest possible convenience at the OA Main Beach Clubhouse.
- 22.2 Daily prizes will be awarded to 1st, 2nd and 3rd placings for each Division.
- 22.3 Other prizes may be awarded at the discretion of the OA.

23. PERPETUAL PRIZES

- 23.1 The Sailing Presentation for each Series of TT and the overall TT Champion for each Division will take place in the OA's Clubhouse after each Sailing Season.
- 23.2 The Overall TT Club Champion for the Sailing Season within each Division will be determined using the combined results from the Winter, Spring and Summer twilight series.
- 23.3 The skipper/owner of the boat must be a current financial member of the OA and their yacht registered with OA on the vessel register.

24. DISCLAIMER OF LIABILITY

- 24.1 All those taking part in races conducted by the OA do so at their own risk and responsibility.
- 24.2 The OA, any sponsor and any party involved in the organisation of any event disclaims any and responsibility for any loss, damage, injury to persons and/or things, both ashore and at sea, as a consequence of participation in any way in the races covered by these sailing instructions.
- 24.3 Attention is drawn to RRS 3 which states: "The responsibility for a boat's decision to participate in a race or to continue racing is hers alone."

25. INSURANCE

Each participating boat shall be insured with valid third-party liability insurance with a minimum cover of \$10M (AUD).

26. MEDIA RIGHTS

In participating in the TT, a competitor grants to the OA and the sponsors, the right in perpetuity, to make, reproduce, edit, use and show, from time to time and at their discretion, any motion pictures, still pictures and live, taped or film television and other reproductions of him/ her taken during the Sailing Season and to use his / her likeness, voice, name and any other information in any material related without compensation.



27. SYC SAILING COMMITTEE

SYC Vice Commodore of Sail:

Wayne Kirby | 0418 950 250 | wayne@kirbyfamily.id.au

SYC Head of Racing:

Steven Murphy | 0475 434 800 | headofracing@sycgc.com.au

TT – Thursday Twilight Division Representative:

Mark Sanders | 0409 493 663 | mark@excellaundrys.com.au

HC – Handicap Committee Representatives:

Russell Birse | racing.admin@sycgc.com.au

28. SYC SAILING CONTACTS

SYC Racing Coordinator:

Kayla Boothby | 0481 711 950 | racing.coordinator@sycgc.com.au

SYC Volunteers Coordinator:

Mike Latter | 0499 941 982 | volunteers@sycgc.com.au

SYC Hollywell Sailing Office:

(07) 5537 7030 | racing.admin@sycgc.com.au

29. PARENT CONSENT FORM



Parent Consent Form

For participants under 18 years old.

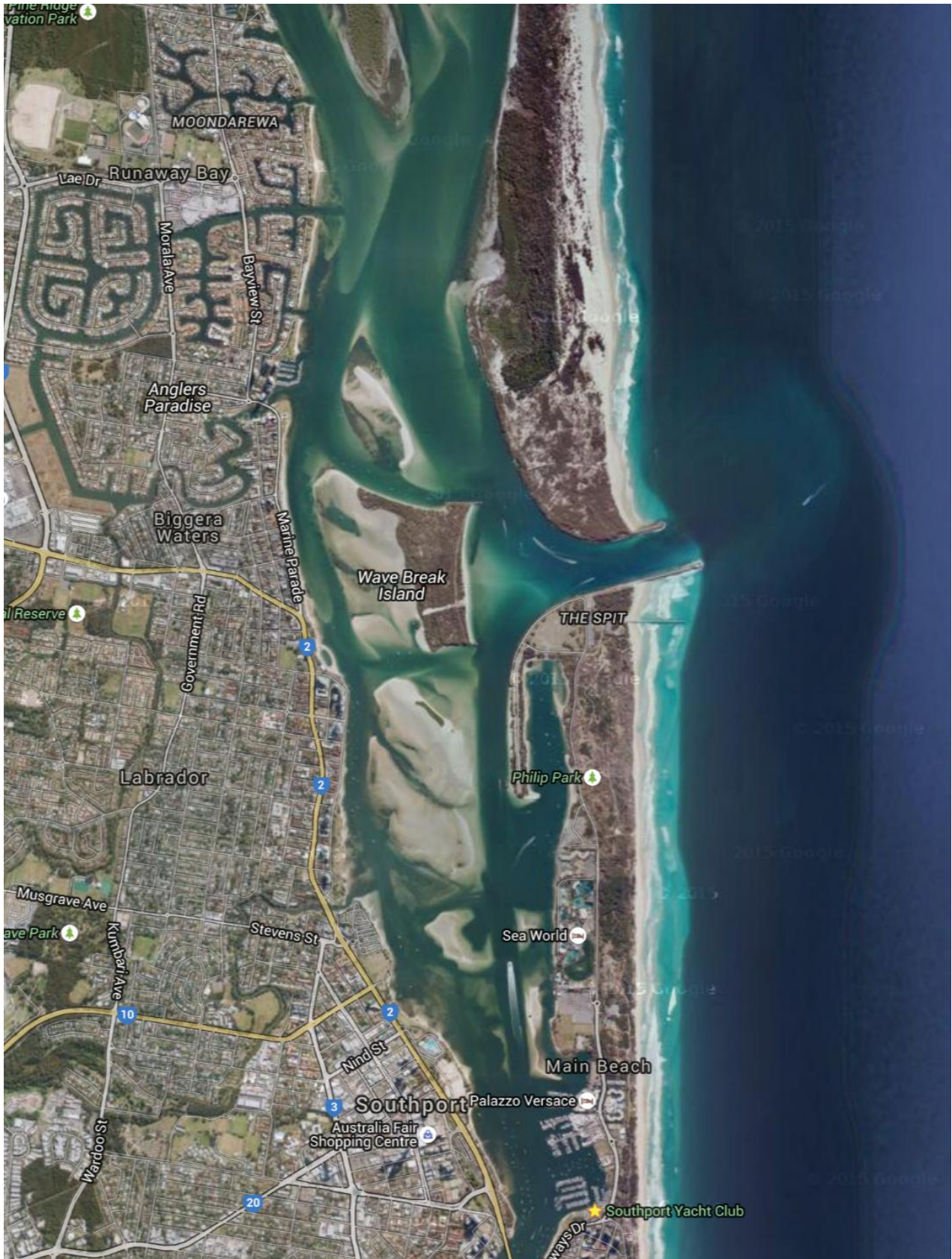
Scan QR Code / Click the link

<https://form.jotform.com/253497312363055>



ATTACHMENT A - SYC TWILIGHT RACING AREA

BROADWATER





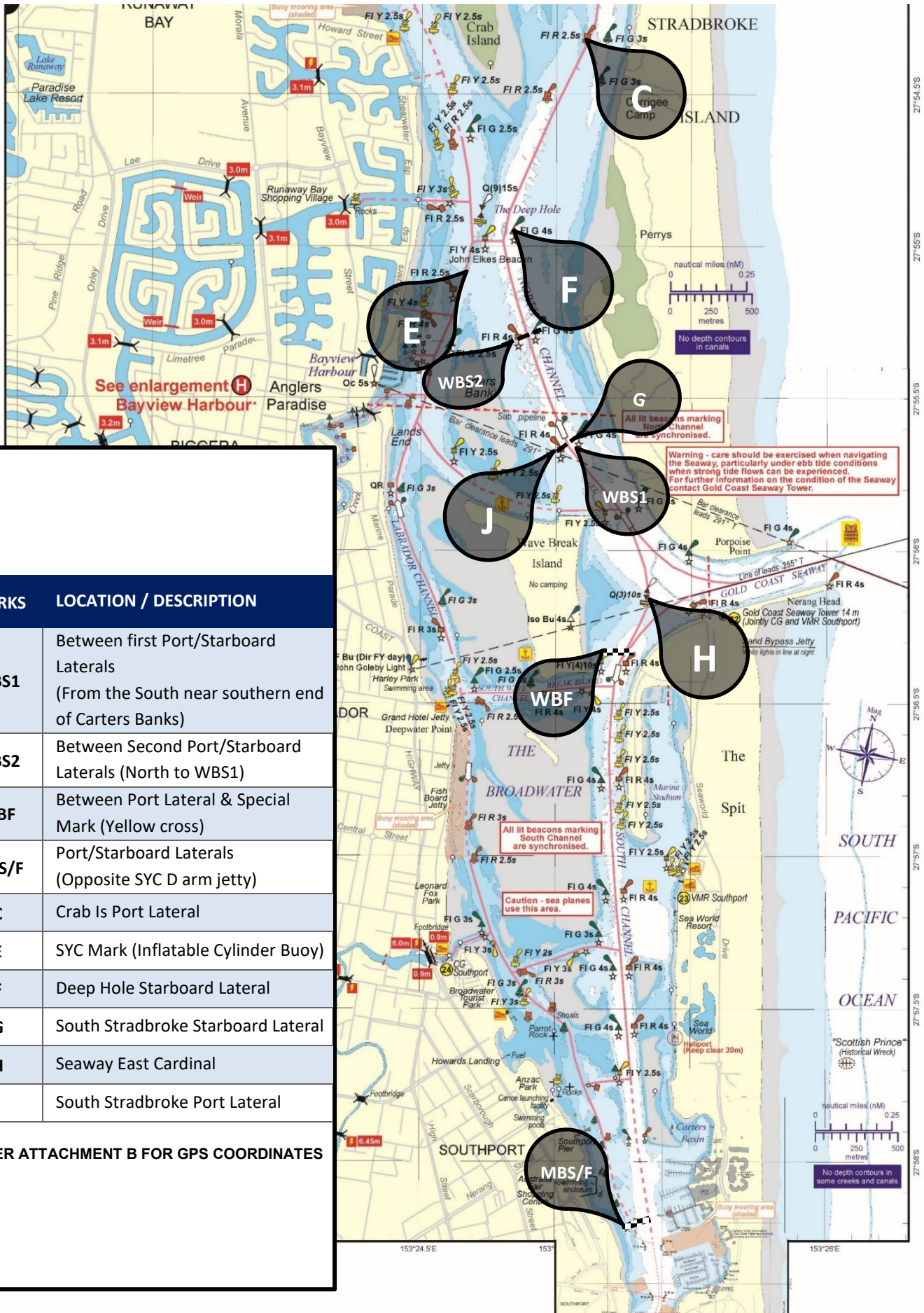
ATTACHMENT B - SYC TWILIGHT MARKS

BUOY	DESCRIPTION
START / FINISH	IALA Beacons – As described below or Orange and Black Top inflatable cylinder
Barging Buoy	Pink teardrop

DESIGNATED INSHORE MARKS	LOCATION / DESCRIPTION	APPROX. GPS COORDINATES (WGS84 Datum)
Wave-Break Start 1 (WBS1)	Between first Port/Starboard Laterals (From the South near southern end of Carters Banks)	27° 55.676'S 153° 25.057'E
Wave-Break Start 2 (WBS2)	Between Second Port/Starboard Laterals (North to WBS1)	27° 55.321'S 153° 24.895'E
Wave-Break Finish (WBF)	Between Port Lateral & Special Mark (Yellow cross)	27° 56.393'S 153° 25.213'E
Main Beach Start / Finish	Port/Starboard Laterals (Opposite SYC D arm jetty)	27° 58.304'S 153° 25.348'E
C	Crab Is Port Lateral	27° 53.940'S 153° 25.136'E
E	SYC Mark (Inflatable Cylinder Buoy)	27° 55.092'S 153° 24.659'E
F	Deep Hole Starboard Lateral	27° 54.980'S 153° 24.842'E
G	South Stradbroke Starboard Lateral	27° 55.654'S 153° 25.085'E
H	Seaway East Cardinal	27° 56.170'S 153° 25.328'E
J	South Stradbroke Port Lateral	27° 55.698'S 153° 25.019'E



ATTACHMENT C - SYC TWILIGHT MARKS MAP



MARKS	LOCATION / DESCRIPTION
WBS1	Between first Port/Starboard Laterals (From the South near southern end of Carters Banks)
WBS2	Between Second Port/Starboard Laterals (North to WBS1)
WBF	Between Port Lateral & Special Mark (Yellow cross)
MBS/F	Port/Starboard Laterals (Opposite SYC D arm jetty)
C	Crab Is Port Lateral
E	SYC Mark (Inflatable Cylinder Buoy)
F	Deep Hole Starboard Lateral
G	South Stradbroke Starboard Lateral
H	Seaway East Cardinal
J	South Stradbroke Port Lateral
REFER ATTACHMENT B FOR GPS COORDINATES	



ATTACHMENT D - SYC TWILIGHT COURSES & MARK ROUNDINGS

NB: All marks to be left/passed to port unless indicated by (s) – in which case marks are to be left/passed to starboard.

COURSE (Numeral Pennant)	MARK ROUNDINGS	WIND
1	DIV 1 – WBS – F(S) – C – F – J – F(S) – C – E – C – E – H(S) – WBF 6.8nm approx. DIV 2 – WBS – C – J – C – E – H(S) – WBF 5.5nm approx.	SOUTHERLY
2	DIV 1 – MBS – H – E(S) – G – F(S) – C – F – H(S) – WBF 7.1nm approx. DIV 2 – MBS – H – E(S) – G – F(S) – H(S) – WBF 6.3nm approx.	SOUTHERLY
3	DIV1 – MBS – H – F(S) – C – E – G – E – H(S) – WBF 7.5nm approx. DIV 2 – MBS – H – C – E – G – E – H(S) – WBF 7.1nm approx.	SOUTHERLY
4	DIV 1 – MBS – H – E (s) – C(s) – F – J(s) – E(s) – F(s) – J(s) – E(s) – H(s) – WBF 7.9nm approx. DIV 2 – MBS – H – E(s) – C(s) – J(s) – E(s) – F(s) – H(s) – WBF 6.7nm approx.	SOUTHERLY
5	DIV 1 – MBS – H – F(s) – C – E – C – E – G – F(s) – C – F – H(s) – WBF 8.3nm approx. DIV 2 – MBS – H – C – E – G – C – H(s) – WBF 6.9nm approx.	SOUTHERLY
6	DIV 1 – MBS – H – F(S) – C – E – G – F(S) – C – E – H(S) – WBF 8.3nm approx. DIV 2 – MBS – H – C – E – C – E – H(S) – WBF 7.2nm approx.	SOUTHERLY
7	DIV 1 – MBS – H – F(s) – C – F – J(s) – E(s) – F(s) – J(s) – E (S) – F(S) – H(s) – WBF 8.4nm approx. DIV 2 – MBS – H – C – J(s) – E(s) – J(S) – E(s) – H(s) – WBF 7.8nm approx.	SOUTHERLY
8	DIV 1 – MBS – H – F(S) – C – E – G – F(S) – C – E – G – E – H(S) – WBF 9.5nm approx. DIV 2 – MBS – H – C – E – G – C – E – H(S) – WBF 8.4nm approx.	SOUTHERLY
9	DIV 1 – WBS – E(S) – C(S) – F – J(S) – E(S) – C(S) – F – J(S) – E(S) – H(S) – WBF 6.8nm approx. DIV 2 – WBS – E(S) – C(S) – J(S) – C(S) – F – H(S) – WBF 5.4nm approx.	NORTHERLY
10	DIV 1 – WBS – E(S) – F(S) – J(S) – E(S) – F(S) – J(S) – E(S) – H(S) – MBF 7.1nm DIV 2 – WBS – E(S) – F(S) – J(S) – E(S) – H(S) – MBF 5.8nm approx.	NORTHERLY
11	DIV 1 – WBS – E(S) – C(S) – F – G(S) – E(S) – G(S) – E(S) – H(S) – MBF 7.7nm DIV 2 – WBS – E(S) – C(S) – G(S) – E(S) – H(S) – MBF 6.6nm	NORTHERLY
12	DIV 1 – WBS – F(S) – C – E – G – E – J – F(S) – C – E – H(S) – MBF 8.1nm approx. DIV 2 – WBS – C – E – G – E – H(S) – MBF 6.8nm approx.	NORTHERLY
13	DIV 1 – WBS – E(s) – C(S) – F – J(S) – E(S) – C(s) – F – J(s) – E(S) – F(S) – H(s) – MBF 9nm approx. DIV 2 – WBS – E(s) – C(s) – J(s) – E(s) – J(s) – E(s) – H(s) – MBF 8nm approx.	NORTHERLY
14	DIV 1 – WBS – F(S) – C – E – G – E – J – F(S) – C – E – G – F(S) – H(S) – MBF 9.2nm approx. DIV 2 – WBS – C – E – G – C – E – H(S) – MBF 7.5nm approx.	
15	OFFSHORE- To be communicated on the day	



ATTACHMENT F - DECLARATION

To: SOUTHPORT YACHT CLUB. Racing Admin: racing.admin@sycgc.com.au, Phone (07) 5537 7030

BOAT NAME	SAIL NUMBER

I declare that during the race the following Rules were NOT observed and / or Infringements occurred and / or Penalties taken, with an explanation given as follows:

Witnessed by (Boat Name/s, Skipper/Crew Name/s):

Name of Person-In-Charge: _____ Date: ___/___/___

Signature of Person-In-Charge: _____.