



SOUTHPORT YACHT CLUB

INSHORE DIVISION



2026 - 2027

SAILING INSTRUCTIONS

INCLUDING AMENDMENT 1



TABLE OF CONTENTS

1.	RULES	6
2.	ELIGIBILITY	6
3.	COMMUNICATION	7
4.	CHANGES TO SAILING INSTRUCTIONS.....	7
5.	SIGNALS MADE ASHORE	7
6.	SCHEDULE OF RACES	7
7.	SAIL RESTRICTIONS	7
8.	RACING AREA.....	8
9.	CLASS FLAGS	8
10.	COURSES	8
11.	MARKS	8
12.	AREAS THAT ARE OBSTRUCTIONS	9
13.	THE STARTS	9
14.	CHANGE TO NEXT LEG OF THE COURSE	10
15.	SHORTENED COURSE	11
16.	THE FINISH	11
17.	PENALTY SYSTEM.....	11
18.	TIME LIMITS	12
19.	PROTESTS.....	12
20.	SCORING.....	12
21.	SAFETY REGULATIONS	13
22.	REPLACEMENT, SUBSTITUTION OR MODIFICATION OF CREW OR EQUIPMENT	14
23.	EQUIPMENT AND MEASUREMENT CHECKS.....	14
24.	OFFICIAL BOATS.....	14
25.	SUPPORT TEAMS.....	14
26.	RUBBISH DISPOSAL	14
27.	RACE PRIZES	14
28.	DISCLAIMER OF LIABILITY	15
29.	INSURANCE.....	15
30.	MEDIA RIGHTS.....	15
31.	SYC SAILING COMMITTEE.....	16
32.	SYC SAILING CONTACTS.....	16
33.	PARENT CONSENT FORM	16



ID – INSHORE DIVISION SCHEDULE – 2026/2027	
Winter Passage 1/6	Saturday 2 nd May 2026
Brass Monkey 1/14	Wednesday 6 th May 2026
Brass Monkey 2/14	Wednesday 13 th May 2026
Winter Passage 2/6	Saturday 16 th May 2026
Brass Monkey 3/14	Wednesday 20 th May 2026
Brass Monkey 4/14	Wednesday 27 th May 2026
Two Handed Series Day 1/3	Saturday 30 th May 2026
Brass Monkey 5/14	Wednesday 3 rd Jun 2026
Winter Passage 3/6 CRAB ISLAND CLASSIC	Saturday 6 th June 2026
Brass Monkey 6/14	Wednesday 10 th June 2026
Brass Monkey 7/14 (Female Helm Division)	Wednesday 17 th June 2026
Winter Passage 4/6	Saturday 20 th June 2026
Brass Monkey 8/14	Wednesday 24 th June 2026
Two Handed Series Day 2/3	Saturday 27 th June 2026
Brass Monkey 9/14	Wednesday 1 st July 2026
Winter Passage 5/6	Saturday 4 th July 2026
Brass Monkey 10/14	Wednesday 8 th July 2026
Winter Passage 6/6	Saturday 11 th July 2026
Brass Monkey 11/14	Wednesday 15 th July 2026
Brass Monkey 12/14	Wednesday 12 th August 2026
FUN RACE	Saturday 15 th August 2026
Brass Monkey 13/14	Wednesday 19 th August 2026
Brass Monkey 14/14	Wednesday 26 th August 2026
JaM 1/14 (Jeff Thorpe Memorial)	Wednesday 2 nd September 2026
Twilight RTC 1/14	Wednesday 9 th September 2026
RTC 1/6	Saturday 12 th September 2026
JaM 2/14	Wednesday 16 th September 2026
Twilight RTC 2/14	Wednesday 23 rd September 2026
Passage 1/7	Saturday 26 th September 2026
JaM 3/14	Wednesday 30 th September 2026
Twilight RTC 3/14	Wednesday 7 th October 2026
Passage 2/7	Saturday 10 th October 2026
JaM 4/14	Wednesday 14 th October 2026
Twilight RTC 4/14	Wednesday 21 st October 2026
JaM 5/14	Wednesday 28 th October 2026



RTC 2/6	Saturday 31 st October 2026
Twilight RTC 5/14	Wednesday 4 th November 2026
Passage 3/7	Saturday 7 th November 2026
JaM 6/14	Wednesday 11 th November 2026
Passage 4/7	Saturday 14 th November 2026
Twilight RTC 6/14	Wednesday 18 th November 2026
JaM 7/14 (Female Helm Division)	Wednesday 25 th November 2026
Twilight RTC 7/14	Wednesday 2 nd December 2026
RTC 3/6	Saturday 5 th December 2026
JaM 8/14	Wednesday 9 th December 2026
Two Handed Series Day 3/3	Saturday 12 th December 2026
Christmas Race	Wednesday 16 th December 2026
Twilight RTC 8/14	Wednesday 13 th January 2027
RTC 4/6	Saturday 16 th January 2027
JaM 9/14	Wednesday 20 th January 2027
Twilight RTC 9/14	Wednesday 27 th January 2027
Passage 5/7	Saturday 30 th January 2027
JaM 10/ 14	Wednesday 3 rd February 2027
Twilight RTC 10/14	Wednesday 10 th February 2027
RTC 5/6	Saturday 13 th February 2027
JaM 11/14	Wednesday 17 th February 2027
Twilight RTC 11/14	Wednesday 24 th February 2027
Passage 6/7	Saturday 27 th February 2027
JaM 12/14	Wednesday 3 rd March 2027
Twilight RTC 12/14	Wednesday 10 th March 2027
JaM 13/14	Wednesday 17 th March 2027
Passage 7/7	Saturday 3 rd April 2027
Twilight RTC 13/14	Wednesday 7 th April 2027
JaM 14/14	Wednesday 14 th April 2027
RTC 6/6	Saturday 17 th April 2027
Twilight RTC 14/14	Wednesday 21 st April 2027



SYC SPECIAL EVENTS 2026-2027

CRAB ISLAND CLASSIC	Saturday 6 th June 2026
SAIL PAST & BLESSING THE FLEET	Saturday 5 th September 2026
BREAKING OF THE FLAG CEREMONY & DASH 4 CASH	Sunday 6 th September 2026
JOHN MCNAMARA MEMORIAL RACE	Saturday 21 st November 2026
TWO HANDED RACE	Saturday 6 th March 2027
LADIES DAY RACE	Saturday 20 th March 2027
BRIDGE TO NO BRIDGE	20 th - 21 st March 2027
DUX BIRTHDAY CELEBRATIONS	Sunday 21 st March 2027

INSHORE DIVISION SERIES FEES

Block Whole Season Discount (64 Race Days)	\$870.00
Brass Monkey (14 Races)	\$210.00
Winter Passage (6 Races)	\$90.00
Summer Passage (7 Races)	\$105.00
Saturday Summer RTC (6 Race Days)	\$150.00
Wednesday RTC (14 Race Days)	\$210.00
Wednesday JaM (14 Races)	\$350.00
Two Handed Series (3 Races)	\$45.00



1. RULES

- 1.1. The Organising Authority (OA) is Southport Yacht Club Inc.
- 1.2. SYC is a member of Australian Sailing (AS) and races are governed by the Racing Rules of Sailing 2025-2028 (RRS) of World Sailing and the Prescriptions of Australian Sailing (AS).
- 1.3. All participating boats shall comply with SYC's current sailing policy.
- 1.4. All boats shall comply with the following safety requirements:
 - 1.4.1. **AS Special Regulations:** All boats shall comply with Australian Sailing Special Regulations Part 1 – Category 7.
 - 1.4.2. **SYC Additional Safety Requirements (Category 7 PLUS):** In addition to Australian Sailing Special Regulations Part 1 – Category 7, all boats shall comply with the Southport Yacht Club Category 7 PLUS safety requirements, as set out in the document titled: “Category 7 PLUS – Additional Equipment Requirements” (SYC, current version). These requirements form part of the Sailing Instructions and are imposed by the Organising Authority in accordance with the Australian Sailing Special Regulations.
 - 1.4.3. **Equipment Audit Documentation:** All boats shall supply, at the time of entry, a current Australian Sailing Category 7 Equipment Audit Form, together with a completed SYC Category 7 PLUS Declaration, certified by an approved Australian Sailing Club or National Equipment Auditor.
 - 1.4.4. **Etchells Class – Additional Safety Requirements:** Boats racing as Etchells shall also comply with “Annexure A – Safety Equipment, Etchells Association (Version 2)”, as published by the Etchells Class Association. Compliance with this Annexure is mandatory in addition to Australian Sailing Special Regulations Part 1 – Category 7 and the Southport Yacht Club Category 7 PLUS safety requirements.
- 1.5. All boats shall comply with the Transport Operations (Marine Safety) Act 1994 and Regulation. In the event of a reportable Marine Incident, the SYC Sailing Officer is to be notified as soon as practical, but no later than 1 hour after the last boat has finished, a copy of the MSQ Marine Incident Report is required to be lodged with the OA at the same time it is lodged with Maritime Safety Queensland.
- 1.6. The International Regulations for the Prevention of Collisions at Sea 1972 (COLREGS) shall apply at all times. The Racing Rules of Sailing (RRS) will apply only between those boats that are participating in the event, for the duration of the event. Should interaction occur with non-participating ships, then COLREGS shall apply to all ships and shall over-ride all other rules. This is a condition governed by local Statutory Authorities for the OA's approved Aquatic Event Permit.
- 1.7. For all competitors competing in a one-design class championships, they must comply with their Class Association rules.
- 1.8. All competitors are reminded of RRS 1.1 Helping Those in Danger; A boat, competitor or support person shall give all possible help to any person or vessel in danger.
- 1.9. A minimum of five (5) boats is required to constitute a race. If fewer than five boats start, the race may be abandoned.

2. ELIGIBILITY

- 2.1. Off the Beach classes are not permitted to sail in Inshore Races.
- 2.2. A boat shall have a minimum of 2 crew.
- 2.3. All boats intending to race shall pre-pay and register with a Season Entry or Casual Entry prior to racing via the TopYacht system. A boat that fails to comply may be scored Did Not Come to the Starting Area (DNC) or Did Not Start (DNS) without a hearing under RRS A5, provided the factual basis is not in dispute.
- 2.4. **Intention to Race – Saturday Racing.**



For Saturday races, the Organising Authority may issue an “Intention to Race” SMS to the Primary Contact Person for each entered boat on the Friday prior to racing. Where such an SMS is issued, the Person in Charge is required to respond in accordance with the instructions in the message, indicating their intention to participate. Failure to respond may be used by the Race Committee for planning purposes, including course selection and race management decisions. This clause does not impose penalty.

3. COMMUNICATION

- 3.1. On each SUMMER RTC race day and each Wednesday Twilight RTC day before 1100hrs, the OA shall email the “Primary Contact Person” of each boat, a “SYC Inshore Division Briefing & Communication Notice” which will include the location of the course, North or South of Hollywell.
- 3.2. On the water, the Race Committee intends to monitor and communicate with competitors on VHF Ch 09 radio channel.
- 3.3. When Course 8 is selected by the Race Committee (RC), the details of the course shall be advised at the briefing for Saturday races. On Twilight race days, where there is no briefing, the course number 8 will be displayed on the Tower, and the Race Officer will broadcast the race course details over the radio.
- 3.4. **The Race Committee may make such decisions as it considers necessary to ensure the fair and safe conduct of racing. Such decisions shall not be grounds for redress except in accordance with RRS 62.**

4. CHANGES TO SAILING INSTRUCTIONS

- 4.1. Changes to Sailing Instructions will be emailed to competitors on the Inshore Distribution list and posted on the OA’s website on the Official Noticeboard and the Inshore page not less than sixty (60) minutes before the scheduled start.

5. SIGNALS MADE ASHORE

- 5.1. Signals made ashore will be displayed on the official flagpole located on the Southern Grass of the SYC Hollywell clubhouse.
- 5.2. When flag AP is displayed ashore, ‘1 minute’ is replaced with ‘not less than 30 minutes’ in the race signal AP.
- 5.3. When a visual signal is displayed over a course flag or class flag, it applies to that course area/class only.

6. SCHEDULE OF RACES

- 6.1. The schedule of races is as per the list at the beginning of these SI’s.
- 6.2. Saturday Briefing and Warning Signal:
For race series scheduled on a Saturday, a Skippers’ Briefing will be conducted at 1230 hours at the SYC Hollywell Clubhouse. The first warning signal for Saturday races shall not be before 1330 hours, unless otherwise stated by the Race Committee.

7. SAIL RESTRICTIONS

- 7.1. Substitution of damaged or lost sails will not be allowed unless authorised by the Race Committee. Requests for substitution shall be made to the Sailing Office at the first reasonable opportunity.



- 7.2. JaM Series – This series is designed for the use of Jib and Mains only. The difference between a headsail and a spinnaker is that the width of a headsail, measured between the midpoints of its luff and leech, is less than 75% of the length of its foot. The use of a Gennaker, Blooper, Spinnaker, Code Zero or any other purpose-built downwind sail is prohibited.
- 7.3. The headsail must be fully hanked or attached by means of a luff groove device to the forestay. Spinnaker poles and/or whisker poles are allowed for poling out headsails.
- 7.4. Boats shall use only one mainsail throughout the Race but may change their headsail throughout the Race.

8. RACING AREA

Attachment A & B show the approximate location of the SYC Inshore Division Racing Area.

9. CLASS FLAGS

FLEET	FLAG
Inshore Division – Division 1	Code Flag Q
Inshore Division – Division 2	Code Flag T

10. COURSES

- 10.1. The diagrams and tables in ATTACHMENT C and E show the courses to be sailed for the Round the Cans Series (RTC), including the order in which marks are to be passed, and the side on which each mark is to be left.
- 10.2. The course number to be sailed for RTC will be indicated by the Course Board being displayed on the start vessel.
- 10.3. Attachment C & D shows the courses to be sailed for the Summer Passage, Two Handed Series, JaM Series, Round the Cans Series (RTC), Brass Monkey Series, including the order in which marks are to be passed, and the side on which each mark is to be left.
- 10.4. The course number to be sailed for Summer Passage, Two Handed Series, JaM Series and Brass Monkeys will be indicated by a Course Board being displayed on the SYC Hollywell Tower or the Start Vessel.
- 10.5. **For the Brass Monkey Series, Division 1 and Division 2 may be assigned different courses.**

11. MARKS

- 11.1. Marks, including start and finish marks, are described in Attachment C – SYC DESIGNATED MARKS.
- 11.2. All boats shall maintain a minimum distance of 3 metres from all International Association of Marine Aids to Navigation and Lighthouse Authorities (IALA) marks*. This requirement is a condition imposed by local statutory authorities under the Organising Authority’s Aquatic Event Authority. Failure to comply with this requirement is prohibited under those conditions.
- 11.3. All boats shall give due consideration to the weather conditions, including tidal effect (current), wind conditions, and their intended course when passing or rounding an IALA mark.



- 11.4. *Competitors may refer to the Maritime Safety Queensland Boating Maps located at <http://www.msq.qld.gov.au/Boating-maps/Gold-Coast-guides> for detailed maps.

12. AREAS THAT ARE OBSTRUCTIONS

- 12.1. Except where an IALA mark is included as a mark of the course, areas outside the intended channel(s) defined by IALA lateral and cardinal marks north of and including the Sovereign Special Mark and the Crab Island West Cardinal “Q(9)15s” are designated as obstructions.
- 12.2. A boat shall be considered to have remained clear of an obstruction provided all relevant IALA lateral and cardinal marks have been passed on their required side.
- 12.3. All IALA lateral and cardinal marks defining navigable channels within the racing area shall be considered marks of the course when encountered and shall be passed on their required side in accordance with the IALA Maritime Buoyage System and the Queensland Uniform Shipping Laws (USL) Code. Failure to do so shall be considered sailing the course incorrectly and may be penalised without a hearing under RRS A5, provided the factual basis is not in dispute.
- 12.4. The finishing line is an obstruction except for a boat that is finishing.

13. THE STARTS

SERIES NAME	WARNING SIGNAL (Not Before)
Wednesday JaM Series (Pursuit)	16:30hrs
Round the Cans Series (RTC)	16:55hrs
Brass Monkey Series	16:25hrs
Two Handed Series	13:25hrs
Winter Passage Series	13:25hrs
Summer Series Passage/RTC	13:25hrs

CLARIFICATION OF WARNING SIGNAL TIMES: The times listed in the Warning Signal table are the earliest time at which the first warning signal for that series may be made.

Where multiple divisions or classes are scheduled to start, subsequent warning signals shall be made in accordance with RRS 26 unless otherwise stated.

For the avoidance of doubt, the published time is not the start time but the earliest possible warning signal for the first division or class.

START LINE CLARIFICATION: Unless otherwise stated, when starting at the SYC Hollywell Tower, the starting line is between the Tower displaying an orange flag and the course side of the starting mark.

When an Official Boat is used, the starting line is between a staff displaying an orange flag on the vessel and the course side of the starting mark



- 13.1. Boats shall start by sailing completely to the pre-start side of the starting line and then crossing the starting line from the pre-start side in accordance with RRS 26 (except as modified for Pursuit Races).
- 13.2. **A boat that starts more than five (5) minutes after her starting signal shall be scored Did Not Start (DNS) without a hearing. This changes RRS A4.**
- 13.3. A boat that crosses the starting line within five (5) minutes before her starting signal and fails to start correctly shall be scored OCS.

ROUND THE CANS (RTC)

- 13.4. Races will be started in accordance with RRS Rule 26.
- 13.5. The starting line will be between a staff displaying an orange flag on the start vessel at the starboard end and the course side of the port-end starting mark.
- 13.6. A boat that crosses the starting line within five (5) minutes before her starting signal and fails to start correctly shall be scored OCS.
- 13.7. Boats whose warning signal has not been made shall avoid the starting area during the starting sequence for other classes.

JAM SERIES

- 13.8. The JaM Series shall be sailed as Pursuit Races.
- 13.9. Individual starting times for each boat shall be published by the OA.
- 13.10. For JaM Series Pursuit Races, no class preparatory signal will be made. Each boat's preparatory signal shall be deemed to be four (4) minutes before her individual starting time. This changes RRS 26.
- 13.11. A boat shall not start before her allocated starting time.
- 13.12. A boat that starts early shall return completely to the pre-start side and start correctly.
- 13.13. **A boat that starts more than ten (10) minutes after her allocated starting time shall be scored DNS without a hearing. This changes RRS A4.**

SUMMER PASSAGE, TWO HANDED, BRASS MONKEY & WINTER SERIES STARTS

- 13.14. Races will be started in accordance with RRS Rule 26.
- 13.15. The starting line will be between a staff displaying an orange flag on the Hollywell Tower on the western end of the line and the course side of the start buoy.
- 13.16. Where an Official Boat is used, the start line will be between a staff displaying an orange flag on the vessel and the course side of the start mark.
- 13.17. **A boat that starts more than five (5) minutes after her starting signal shall be scored Did Not Start (DNS) without a hearing. This changes RRS A4.**

Brass Monkey Series – Starting Arrangements:

- 13.18. Division 2 shall start first, followed by Division 1.
- 13.19. The warning signal for the first division shall not be made before 1625 hours.
- 13.20. Subsequent division warning signals shall follow in accordance with RRS 26.



- 13.21. Division 1 and Division 2 may be assigned different courses.
- 13.22. The Race Committee may vary the starting order, timing and/or course allocation where required for weather, safety, fleet management or race management considerations.
- 13.23. Any such changes shall be notified no later than 1615 hours on the day of racing via VHF Channel 09 and/or display of Code Flag L at the SYC Hollywell Tower.

14. CHANGE TO NEXT LEG OF THE COURSE

- 14.1. The Race Committee may change a leg of the course that begins at a rounding mark by changing the position of the next mark (or the finishing line) and signalling all boats before they begin the leg. The next mark need not be in position at that time as per RRS Rule 33.

15. SHORTENED COURSE

- 15.1. The Race Committee may shorten the course at any part of the course. Boats shall finish between a Race Committee vessel or the SYC Hollywell Tower displaying Code Flag “S” and a prominent feature, which may include any fixed or laid mark of the course, in accordance with RRS 32.

16. THE FINISH

ROUND THE CANS SERIES (RTC)

- 16.1. Unless the course is shortened, for Round the Cans Series races the finishing line will be between a staff displaying a blue flag on the finishing vessel at the starboard end and the course side of a blue laid finishing mark at the port end.

SUMMER PASSAGE, TWO HANDED, JAM, BRASS MONKEY & WINTER SERIES

- 16.2. Unless the course is shortened, for Summer Passage, Winter Passage, Two Handed, Brass Monkey and JaM Series races, when the SYC Hollywell Tower is used, the finishing line will be between the Tower displaying a blue flag and the course side of a finishing mark.
- 16.3. For the JaM Series, Two Handed Series, and Brass Monkey Series, when finishing to the SYC Hollywell Tower, the finishing mark shall be an orange cylindrical buoy with a white strobe.
- 16.4. When an Official Boat is used for finishing in races other than RTC, the finishing line will be between a staff displaying a blue flag on the vessel and the course side of a finishing mark, which may be any fixed or laid mark of the course.
- 16.5. When the course is shortened, boats shall finish as directed by the Race Committee in accordance with RRS 32.

17. PENALTY SYSTEM

- 17.1. RRS 44.1 is changed so that the Two-Turns Penalty is replaced by a One-Turn Penalty (one tack and one gybe) for all races.
- 17.2. A boat may use an engine to avoid danger or to free herself after grounding or collision. A boat that uses an engine under this clause shall notify the Race Committee as soon as reasonably possible after the incident, advising the nature of the incident and the use of the engine.
- 17.3. If a boat uses an engine to gain a significant advantage while racing, the matter may be the subject of a protest by the Race Committee.



18. TIME LIMITS

- 18.1. Round the Cans Series (RTC) the time limit for the first boat in each class will be ninety (90) minutes.
- 18.2. Two Handed, Summer & Winter Passage Series, the time limit for the first boat in each class will be one hundred and eighty (180) minutes.
- 18.3. In the Round the Cans Series (RTC), boats failing to finish within fifty (50) minutes after the first boat sails the course and finishes shall be scored Did Not Finish (DNF) without a hearing. This changes RRS 35.
- 18.4. In the Two Handed, Summer and Winter Passage Series, boats failing to finish within ninety (90) minutes after the first boat sails the course and finishes shall be scored Did Not Finish (DNF) without a hearing. This changes RRS 35.
- 18.5. The JaM Series time limit will be 1830 hours. A boat that is still racing at the time limit and does not finish shall be scored Time Limit Expired (TLE) in accordance with RRS A5.1.
- 18.6. The Brass Monkey Series time limit will be 1830 hours for Division 1 and 1835 hours for Division 2. A boat that is still racing at the applicable time limit and does not finish shall be scored Time Limit Expired (TLE) in accordance with RRS A5.1.
- 18.7. If the first boat does not reach the first mark within sixty (60) minutes, the race may be abandoned.

19. PROTESTS

- 19.1. RRS Appendix T- ARBITRATION applies.
- 19.2. Protest forms are available at the OA's Main Beach reception, Sailing Office at Hollywell and may also be downloaded from their website. Protests shall be delivered there within the Protest Time Limit.
- 19.3. The Protest Time Limit is forty-five (45) minutes after the last boat finishes or the Race Committee signals no more racing today, whichever is later. This also applies to all protests by the Race Committee and Protest Committee and requests for redress. This changes RRS 61.3 and 62.2.

20. SCORING

- 20.1. The low points scoring system of RRS Appendix A4 will apply.
- 20.2. For Boats that Did Not Finish (DNF) shall be scored points for the finishing place plus one (1) more than the number of boats that came to the starting area. This changes RRS Appendix A5.2.
- 20.3. For boats that did not come to the starting area (DNC), points shall be scored for the finishing place three (3) more than the number of boats that came to the starting area.
- 20.4. Four (4) races are required to constitute a series. When fewer than five (5) races have been completed, all scores shall count.
- 20.5. When five (5) to nine (9) races have been completed a boat's series score will be the total of her race scores excluding her worst score.
- 20.6. When ten (10) to twelve (12) races have been completed a boat's series score will be the total of her race scores excluding her two (2) worst scores.
- 20.7. When thirteen (13) or more races have been completed a boat's series score will be the total of her race scores excluding her three (3) worst scores.



- 20.8. Where a boat is recorded as DNS, DNF or DNC as a result of failing to meet a clearly defined requirement of these Sailing Instructions, such scoring shall be applied under RRS A5 without a hearing, provided the factual basis is not in dispute.
- 20.9. The Race Committee may abandon a race in accordance with RRS 32. Where a race is abandoned, no scores shall be recorded.
- 20.10. If a race is abandoned due to lack of numbers, boats that are ready to sail with crew at Hollywell on the day, will be recorded as DNS and shall score the sum of the number of boats ready and willing to sail, all other boats entered in the series will be recorded DNC. This changes RRS A5.1.
- 20.11. **Two Handed Series – Additional Scoring:** Results shall be scored using PHS. CBH results may also be calculated and published as a separate scoring category where sufficient eligible entries exist. A minimum of five (5) eligible boats is required to constitute a CBH scoring group. Where fewer than five boats are eligible, CBH results may be published but shall not be scored as a series or count towards series results.

21. SAFETY REGULATIONS

- 21.1. Except where an IALA mark is included as a Mark of the course, areas outside of the intended channel(s) defined by the IALA lateral and cardinal marks north of and including the Sovereign special Mark and Crab Island West Cardinal “Q(9)15s” are considered an obstruction. For the purposes of this definition, it shall be considered that a competitor has remained clear of the obstruction provided they have left all IALA lateral and cardinal marks to their required side.
- 21.2. All helmspersons shall “Sign On” via VHF Ch 09 radio advising their Boat Name, Sail # and P.O.B. (Persons on Board) prior to their start time. Race Committee will confirm recorded details for confirmation of “Sign On”.
- 21.3. A boat that retires from a race shall notify the Race Committee as soon as possible via VHF Ch 09 radio, including P.O.B.
- 21.4. Competitors must provide a clearly identifiable sail number on their mainsail as registered in their TopYacht entry. Failure to display a clearly identifiable sail number may result in a boat being scored DNF. This does not automatically entitle a boat to redress.
- 21.5. Where lifelines complying with AS SR Part 1 Section 3 Rule 3.12 have not been fitted, all crew shall wear a visible life jacket, as per AS SR Part 1 Section 5.
- 21.6. In accordance with AS SR’s, all boats must be fitted with Navigation Lights complying with IRPCAS. During the periods between the published Sunset and Sunrise times (www.bom.gov.au), and during times of restricted visibility, all boats must illuminate their Navigation Lights whilst on the water.
- 21.7. Safety Compliance Penalties
For the following breaches only:
- Failure to sign on prior to racing
 - Failure to notify the Race Committee of retirement
 - Failure to display navigation lights after sunset or during restricted visibility
 - Failure to display the registered sail number at the finish
- 21.8. The Race Committee may impose an Event Nominated Penalty (ENP) without a hearing, calculated as 20% of the score for DNF, rounded to the nearest whole number (0.5 rounded upward). This constitutes a standard penalty applied by the Race Committee under RRS A5, provided the factual basis is not in dispute. All other safety breaches may be the subject of a protest by the Race Committee.



22. REPLACEMENT, SUBSTITUTION OR MODIFICATION OF CREW OR EQUIPMENT

- 22.1. Substitution of damaged or lost equipment will not be allowed unless authorised by the Race Committee. Requests for substitution shall be made to the committee at the first reasonable opportunity.
- 22.2. Failing to notify the SYC Sailing Office of changes to the boat's configuration or rating may result in a protest by the Race Committee. Penalties for these breaches may be less than disqualification if the Protest Committee so decides.

23. EQUIPMENT AND MEASUREMENT CHECKS

- 23.1. A boat or equipment may be inspected at any time for compliance with the class rules, notice of race and sailing instructions.
- 23.2. When instructed by a Race Official, a boat shall proceed to a designated area for inspection.

24. OFFICIAL BOATS

- 24.1. All official boats are numbered by the OA and marked with the OA Burgee.

25. SUPPORT TEAMS

- 25.1. Team leaders, coaches and other support personnel shall stay no less than one hundred (100) metres outside areas where boats are racing from the time of the preparatory signal for the first class to start until all boats have finished or retired or the Race Committee signals a postponement, general recall or abandonment.
- 25.2. No disturbing wash is to be created near a competitor on the racecourse.

26. RUBBISH DISPOSAL

Boats shall not put rubbish in the water. Rubbish may not be placed aboard support and Race Committee boats.

27. RACE PRIZES

DAILY PRIZES

- 27.1. For Wednesday races only, daily prize presentations will not be held before 1915 hours.
- 27.2. For the JAM Series, the Person in Charge must be present at daily Prize Presentations to receive prizes. JaM prizes not collected during the presentation will be redrawn for the next placings.
- 27.3. JAM Series – Three prizes will be awarded - First, Second and Third Place.
- 27.4. Summer Series, Round The Cans (RTC), Brass Monkey Series, Winter Series– Prizes will be awarded to 1st, 2nd and 3rd on corrected time.
- 27.5. Two Handed Series Daily Prizes; Club Cash prizes 1st, 2nd and 3rd.
- 27.6. Where CBH results are calculated for the Two Handed Series, prizes may be awarded at the discretion of the Organising Authority.



PERPETUAL TROPHIES

- 27.7. The annual Sailing Presentation will take place at SYC Mainbeach.
- 27.8. Only current financial members of the Southport Yacht Club Inc. are eligible for a season entry.
- 27.9. Only SERIES ENTRANTS are eligible for Sailing Season prizes at the annual Sailing Presentation event.
- 27.10. Other prizes may be awarded at the discretion of the OA.

28. DISCLAIMER OF LIABILITY

- 28.1. All those taking part in races conducted by the OA do so at their own risk and responsibility.
- 28.2. The OA, any sponsor and any party involved in the organisation of any event disclaims any and every responsibility for any loss, damage, injury to persons and/or things, both ashore and at sea, as a consequence of participation in any way in the races covered by these sailing instructions.
- 28.3. Attention is drawn to RRS 3, which states: “The responsibility for a boat’s decision to participate in a race or to continue racing is hers alone.” By entering and racing, each boat and Person in Charge acknowledges that sailing is an activity that carries inherent risks, including risks relating to weather conditions, sea state, navigational hazards, interaction with commercial and recreational traffic, and the competence of other competitors. The decision to start, continue racing, or retire shall be made by the Person in Charge based solely on their own assessment of the prevailing conditions and the suitability and preparedness of their boat and crew.

29. INSURANCE

Each participating boat shall be insured with valid third-party liability insurance with a minimum cover of \$10M (AUD).

30. MEDIA RIGHTS

In participating in the ID, a competitor grants to the OA and the sponsors, the right in perpetuity, to make, reproduce, edit, use and show, from time to time and at their discretion, any motion pictures, still pictures, still pictures and live, taped or film television and other reproductions of him/ her taken during the Sailing Season and to use his/ her likeness, voice, name and any other information in any material related without compensation.



31. SYC SAILING COMMITTEE

SYC Vice Commodore of Sail:

Wayne Kirby | 0418 950 250 | wayne@kirbyfamily.id.au

SYC Head of Racing:

Steven Murphy | 0475 434 800 | headofracing@sycgc.com.au

SYC Inshore Divisional Representative:

Tomoko Nakanishi | 0418 255 879 | t.nakanishi15@gmail.com

HC – Handicap Committee Representatives:

Russell Birse | racing.admin@sycgc.com.au

32. SYC SAILING CONTACTS

SYC Racing Coordinator:

Kayla Boothby | 0481 711 950 | racing.coordinator@sycgc.com.au

SYC Volunteers Coordinator:

Mike Latter | 0499 941 982 | volunteers@sycgc.com.au

SYC Sailing Office:

(07) 5537 7030 | racing.admin@sycgc.com.au

33. PARENT CONSENT FORM



Parent Consent Form

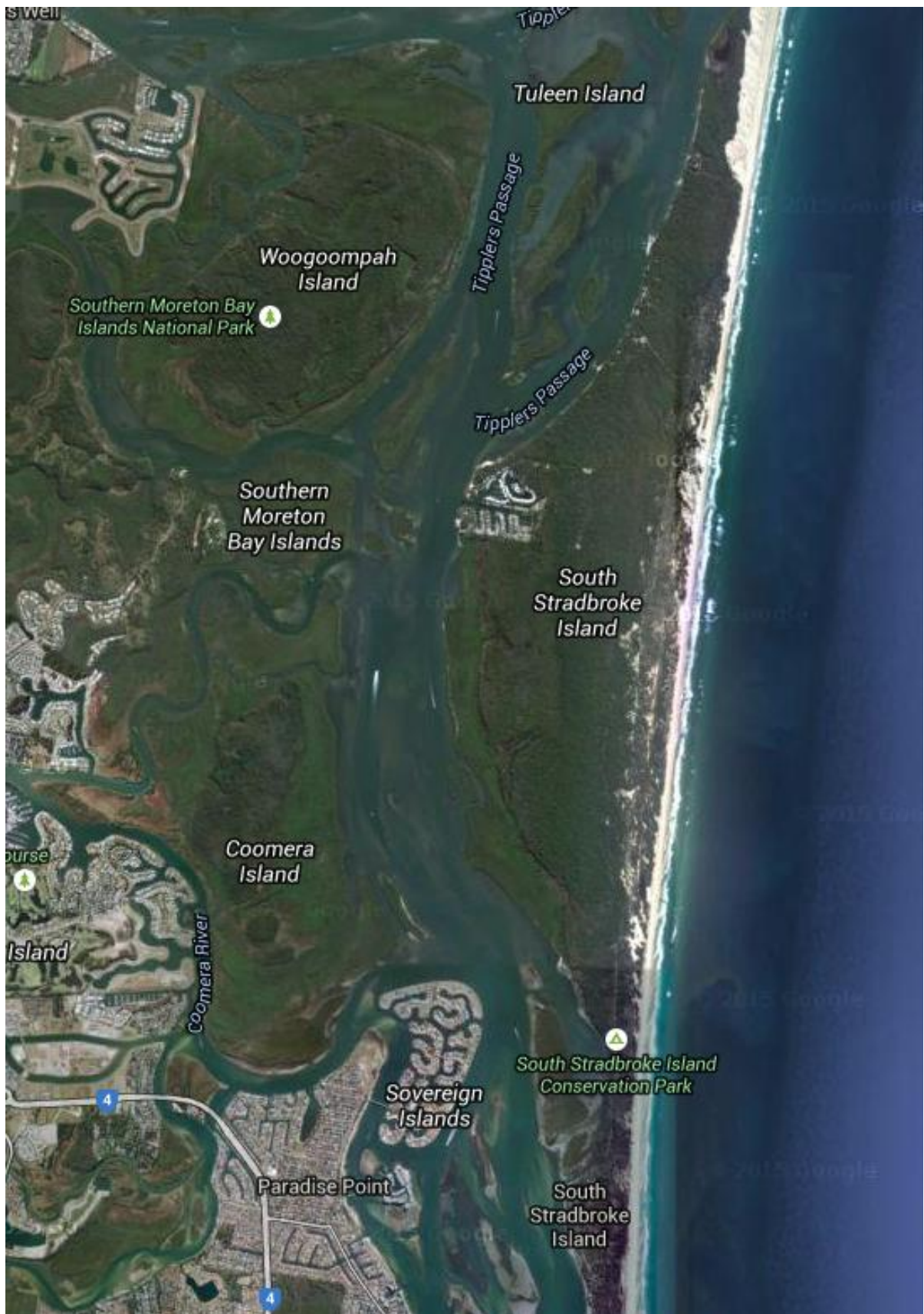
For participants under 18 years old.

Scan QR Code / Click the link

<https://form.jotform.com/253497312363055>



ATTACHMENT A – APPROXIMATE RACING AREA





ATTACHMENT B – APPROXIMATE LOCATION OF RTC COURSES





ATTACHMENT C – BOUYS / MARKS & COURSES

BUOYS	DESCRIPTION
START	Orange with Black Top inflatable cylinder
FINISH	Blue
1 / 2 / 3 / A / F / X / G	Yellow
Barging Buoy	Orange teardrop

DESIGNATED MARKS	LOCATION	Approx. GPS COORDINATES
Hollywell Start / Finish Bouy	SYC Hollywell Tower & the Start Finish Buoy	27°54.05.7 S 153°24'16.8 E
A	Ephraim Is (laid mark)	
B	John Elkes Special	27° 54.992 S 153° 24.736'E
C	Crab Is Port Lateral	27° 53.940'S 153° 25.136'E
D	Sovereign Island Special Mark	27° 52.391'S 153° 24.799'E
E	Coomera River East Cardinal	27° 51.833'S 153° 24.611'E
H	Seaway East Cardinal	27° 56.178'S 153° 25.33'E
K	Currigee Red Lateral	27° 54.512'S 153° 24.970'E
W	Wasp Creek Port Lateral	27° 49.971'S 153° 24.256'E
G	Laid Mark Nth of Seaway Cardinal	
F	Laid Mark – West of Perry's	
WB	Wave Break Special Mark	27° 56.385'S 153° 25.168'E

NB: ALL MARKS TO BE LEFT/PASSED TO PORT UNLESS INDICATED BY (S) – IN WHICH CASE MARKS ARE TO BE LEFT/PASSED TO STARBOARD.

WC = Western Channel



COURSE	MARK ROUNDINGS	TYPE
W1	START – 1 – FINISH	RTC
W2	START – 1 – 3 – 1 – FINISH	RTC
W3	START – 1 – 3 – 1 – 3 – 1 – FINISH	RTC
W4	START – 1 – 3 – 1 – 3 – 1 – 3 – 1 – FINISH	RTC
W5	START – 1 – 3 – 1 – 3 – 1 – 3 – 1 – 3 – 1 – FINISH	RTC
T1	START – 1 – 2 – FINISH	RTC
T2	START – 1 – 2 – 3 – 1 – FINISH	RTC
T3	START – 1 – 2 – 3 – 1 – 3 – 1 – 2 – FINISH	RTC
T4	START – 1 – 2 – 3 – 1 – 3 – 1 – 2 – 3 – 1 – FINISH	RTC
1	START – B – C – D – FINISH	PSG/WS/BM/JAM/TH
2	START – D(s) – C(s) – B(s) - FINISH	PSG/WS/BM/JAM/TH
3	START – A – H – FINISH	PSG/WS/BM/TH
4	START – D – FINISH	PSG/WS/BM/TH
5	START – H – A – FINISH	PSG/WS/BM/TH
6	START – H – C – W - FINISH	PSG/WS/BM/TH
7	START – W – A – H – FINISH	PSG/WS/BM/TH
8	NOTIFIED AT BRIEFING	PSG/WS/BM/JAM/TH
9	START – B – C – E - D – E – FINISH	PSG/WS/BM/TH
10	START – E(s) - D(s) - E(s) – C(s) – B(s) - FINISH	PSG/WS/BM/TH



11	START – A – B – A - FINISH	PSG/WS/BM/JAM/TH
12	START – B – A – B - FINISH	PSG/WS/BM/JAM/TH
13	START – D(s) – B (WC) – FINISH	PSG/WS/BM/JAM/TH
14	START – B – D (WC) – B (WC) – FINISH	PSG/WS/BM/JAM/TH
15	START – B – F – B – G - A – FINISH	PSG/WS/BM/JAM/TH
16	START – G – K – G – C – D – FINISH	PSG/WS/BM/JAM/TH
17	START – D(s) – C(s) – G – K – G – FINISH	PSG/WS/BM/JAM/TH
18	START – H – C – E – B(WC) - FINISH	PSG/WS/BM/JAM/TH
19	START – E(s) – C(s) – H - A - FINISH	PSG/WS/BM/JAM/TH
20	START – H – C – E – D – E – B -- FINISH	PSG/WS/BM/JAM/TH
21	START – E(S) – D(S) – E(S) – C(S) -- H – A -- FINISH	PSG/WS/BM/JAM/TH
22	START – H – C – D – FINISH	PSG/WS/BM/JAM/TH
23	START – B – H (S) – WB (S) – C – D - FINISH	PSG/WS/BM/JAM/TH



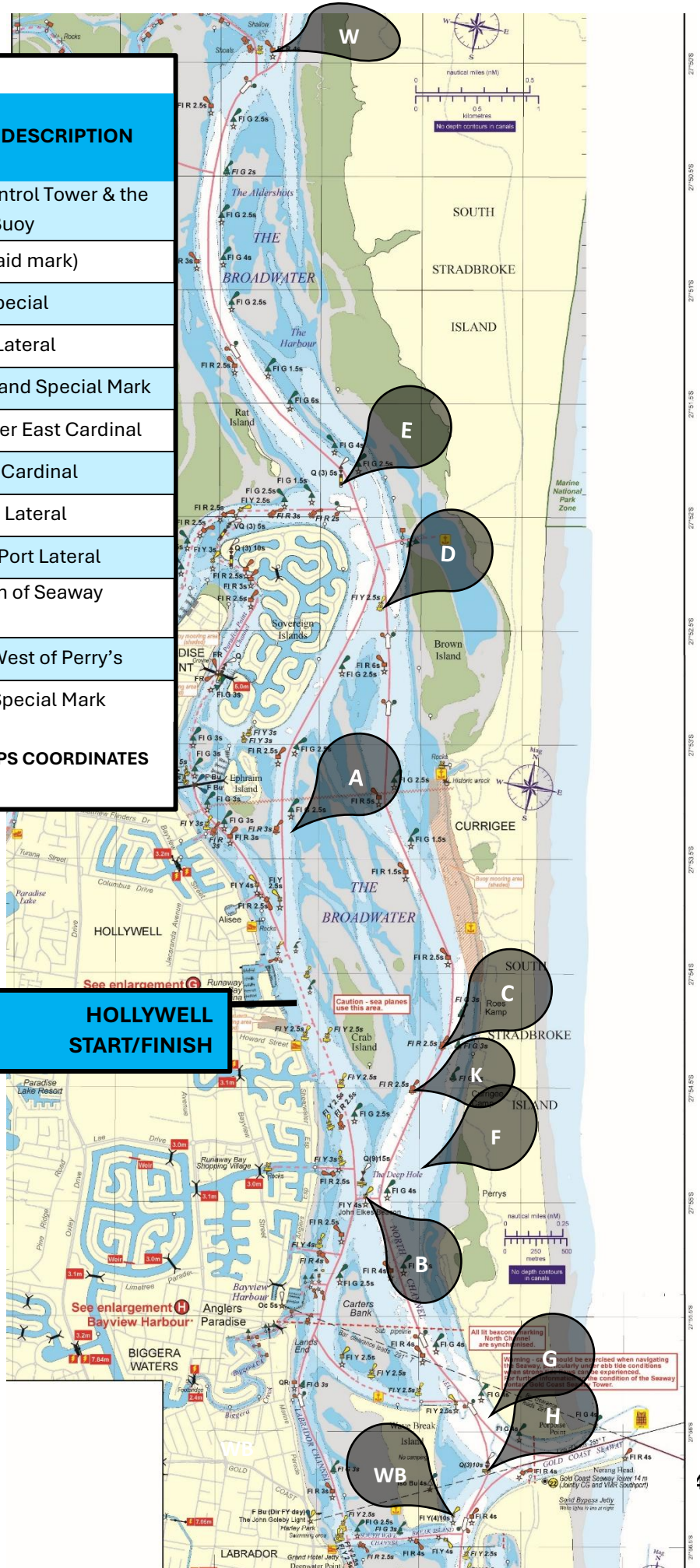
ATTACHMENT D – INSHORE DIVISION PASSAGE MAP

MARKS	LOCATION / DESCRIPTION
Hollywell Start / Finish Buoy	Hollywell Control Tower & the Start Finish Buoy
A	Ephraim Is (laid mark)
B	John Elkes Special
C	Crab Is Port Lateral
D	Sovereign Island Special Mark
E	Coomera River East Cardinal
H	Seaway East Cardinal
K	Currigee Red Lateral
W	Wasp Creek Port Lateral

HOLLYWELL START/FINISH

NB: ALL MARKS TO BE LEFT/PASSED TO PORT UNLESS INDICATED BY (S) – IN WHICH CASE MARKS ARE TO BE LEFT/PASSED TO STARBOARD.

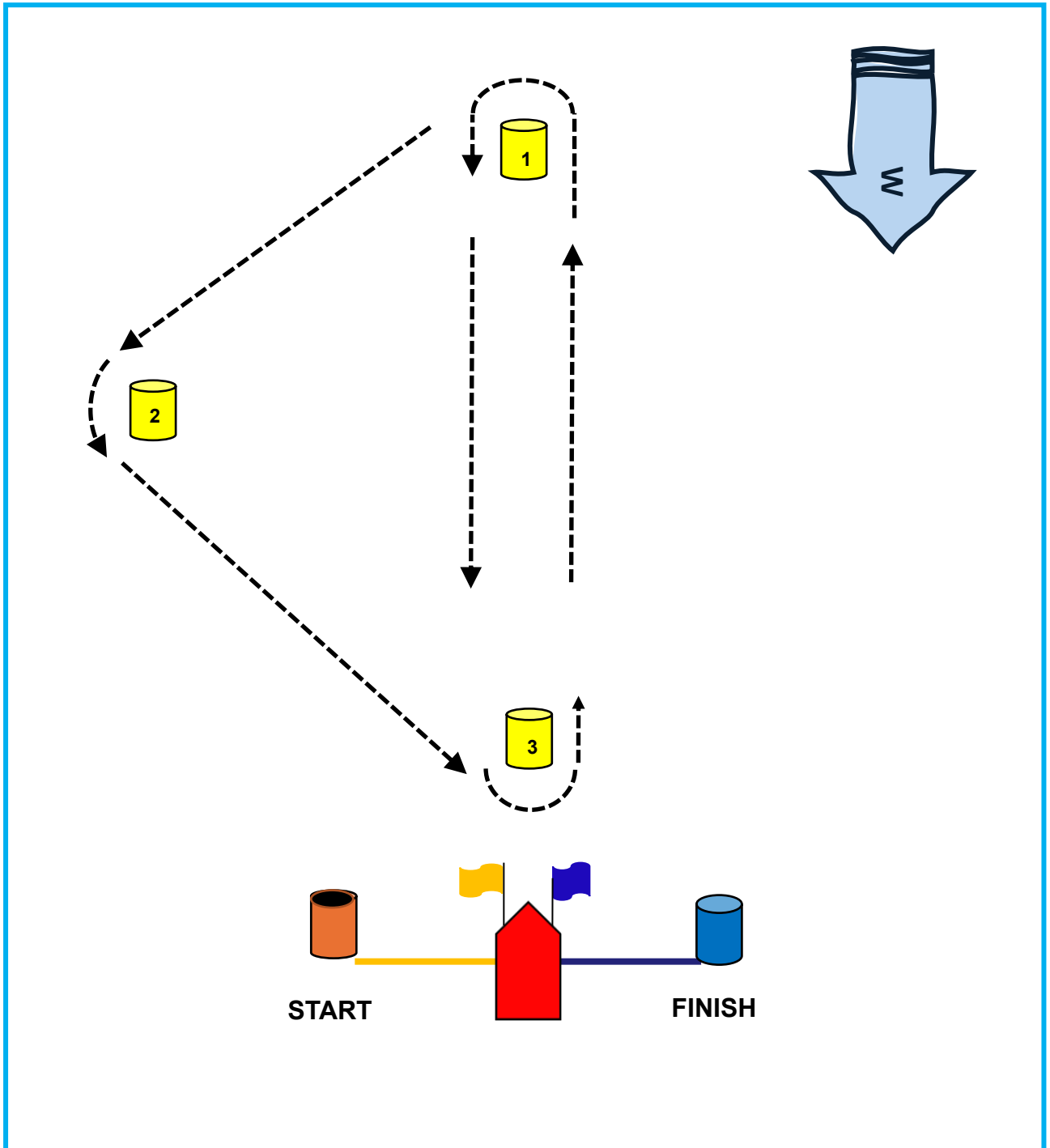
WC = Western Channel





ATTACHMENT E - ID ROUND THE CANS SERIES (RTC) DIAGRAM

WINDWARD/LEEWARD & TRIANGULAR COURSE





ATTACHMENT F - DECLARATION

To: SOUTHPORT YACHT CLUB. Racing Admin: racing.admin@sycgc.com.au, Phone (07) 5537 7030

BOAT NAME		SAIL NUMBER	
------------------	--	--------------------	--

I declare that during the race the following Rules were NOT observed and / or Infringements occurred and / or Penalties taken, with an explanation given as follows:

Witnessed by (Boat Name/s, Skipper/Crew Name/s):

Name of Person-In-Charge: _____ Date: ___/___/___

Signature of Person-In-Charge: _____.