



SOUTHPORT YACHT CLUB



OFFSHORE DIVISION

SAILING INSTRUCTIONS

2026 - 2027



OD – OFFSHORE DIVISION SCHEDULE 2026-2027

Winter Passage - Day 1/6	17 th May 2026
Winter W/L Short Passage - Day 1/2 IRC Super Series Day 1/6	31 st May 2026
Winter Passage - Day 2/6	21 st June 2026
Winter Passage - Day 3/6	5 th July 2026
Winter W/L Short Passage - Day 2/2 IRC Super Series Day 2/6	19 th July 2026
Winter Passage - Day 4/6	30 th August 2026
WINTER SPARE RACE DAY	13 th September 2026
Summer Passage - Day 1/5	27 th September 2026
Summer W/L Short Passage - Day 1/4 IRC Super Series Day 3/6	18 th October 2026
Summer Passage - Day 2/5	15 th November 2026
Summer W/L Short Passage - Day 2/4 IRC Super Series Day 4/6	29 th November 2026
Summer Passage - Day 3/5	13 th December 2026
Summer Passage - Day 4/5	10 th January 2027
Summer Passage - Day 5/5	14 th February 2027
Summer W/L Short Passage - Day 3/4 IRC Super Series Day 5/6	28 th February 2027
Summer W/L Short Passage - Day 4/4 IRC Super Series Day 6/6	4 th April 2027
SUMMER SPARE RACE DAY	18 th April 2027

OFFSHORE DIVISION SERIES FEES

WHOLE SEASON DISCOUNT (15 Race Days)	\$420.00
Winter W/L Short Passage (2 Race Days)	\$75.00
Summer W/L Short Passage (4 Race Days)	\$150.00
Winter Passage (4 Race Days)	\$150.00
Summer Passage (5 Race Days)	\$185.00
IRC SUPER SERIES (6 Race Days)	\$150.00
Not included in block entries	
Casual Race Entry (per race day)	\$45.00 SYC Member \$65.00 Non SYC Member (max entry 3)



ADDITIONAL SYC SPECIAL EVENTS

Event / Regatta Name	Date
BRISBANE RACE WEEK - RQYS	Friday 1 st May to Wednesday 6 th May 2026
JULIAN ROCKS YACHT RACE (Rescheduled Date)	Saturday 9 th May 2026
FLAT ROCK YACHT RACE	Saturday 6 th June 2026
BRISBANE TO BUNDABERG	Thursday 18 th June to Sunday 21 st June 2026
SYDNEY GOLD COAST YACHT RACE	Saturday 25 th July 2026
GCCM GOLD COAST MACKAY YACHT RACE	Thursday 30 th July to Tuesday 4 th August 2026
AIRLIE BEACH RACE WEEK	Thursday 6 th August to Thursday 13 th August 2026
HAMILTON ISLAND RACE WEEK	Saturday 15 th August to Saturday 22 nd August 2026
MAGNETIC ISLAND RACE WEEK	Thursday 27 th August to Wednesday 3 rd September 2026
SAIL PAST & BLESSING THE FLEET	Saturday 5 th September 2026
BREAKING OF THE FLAG & DASH 4 CASH	Sunday 6 th September 2026
THE YACHT SALES CO. SAIL PARADISE REGATTA	Saturday 3 rd October to Monday 5 th October 2026
COOK ISLAND YACHT RACE	Sunday 1 st November 2026
SYDNEY HOBART YACHT RACE	Friday 26 th December to Wednesday 31 st December 2026
TED ELKES MEMORIAL REGATTA	Saturday 23 rd January 2027 & 24 th January 2027
SURF TO CITY	Saturday 6 th February 2027
JULIAN ROCKS YACHT RACE	Saturday 13 th March 2027
LADIES DAY RACE	Saturday 20 th March 2027
DUX BIRTHDAY CELEBRATIONS	Sunday 21 st March 2027
BRISBANE TO GLADSTONE YACHT RACE	Friday 26 th March to Monday 29 th March 2027
BURLEIGH BASH	Saturday 24 th April 2027



TABLE OF CONTENTS

1. RULES	5
2. ELIGIBILITY	6
3. CHANGES TO SAILING INSTRUCTIONS	6
4. COMMUNICATIONS WITH COMPETITORS	6
5. SIGNALS MADE ASHORE	6
6. SCHEDULE OF RACES	6
7. DIVISIONAL FLAGS	7
8. RACING AREA	7
9. THE COURSES	7
10. MARKS	7
11. OBSTRUCTIONS & PROHIBITED AREAS	8
12. THE START	8
13. CHANGE OF THE NEXT LEG OF THE COURSE	9
14. SHORTENED COURSE.....	9
15. THE FINISH	9
16. PENALTY SYSTEM	9
17. TARGET TIMES & TIME LIMITS	10
18. PROTEST AND REQUESTS FOR REDRESS	10
19. SCORING	10
20. SAFETY REGULATIONS	11
21. EQUIPMENT AND MEASUREMENT CHECKS	11
22. OFFICIAL BOATS	12
23. RUBBISH DISPOSAL	12
24. TRACKING DEVICES.....	12
25. PRIZES	12
26. PERPETUAL PRIZES	12
27. DISCLAIMER OF LIABILITY.....	12
28. INSURANCE.....	12
29. MEDIA RIGHTS	13
30. SYC SAILING COMMITTEE	13
31. SYC SAILING CONTACTS.....	13



1. RULES

- 1.1. The Organising Authority (OA) is Southport Yacht Club (SYC) Inc.
- 1.2. Races will be governed by the Racing Rules of Sailing 2025–2028 (RRS), the Prescriptions of Australian Sailing, and these Sailing Instructions.
- 1.3. Australian Sailing Special Regulations (AS SR), Part 1 – Offshore, Category 4 apply.
- 1.4. SYC Sailing Policy; Competitors, support persons, and officials shall comply with Southport Yacht Club’s current Sailing Season Policy, as published on the Club website.
- 1.5. If there is a conflict between any of the governing documents, the order of precedence shall be:
 - (a) The Racing Rules of Sailing (RRS);
 - (b) these Sailing Instructions; and
 - (c) the applicable Rating Rules (ORC Club and/or IRC).

This alters RRS 63.7.

This clause is intended to ensure that the Racing Rules of Sailing prevail in the determination of protests and requests for redress, that these Sailing Instructions govern the conduct of racing where permitted by the RRS, and that Rating Rules apply only to matters of measurement, rating, and scoring calculations.

- 1.6. All boats shall comply with the Transport Operations (Marine Safety) Act 1994 (Qld), associated regulations, and the requirements of Maritime Safety Queensland. In the event of a reportable Marine Incident, the Person in Charge shall ensure that:
 - (a) the incident is reported to Maritime Safety Queensland in accordance with statutory requirements; and
 - (b) the Organising Authority is notified as soon as practicable after the incident.

Compliance with statutory reporting requirements is independent of, and in addition to, any actions required under the Racing Rules of Sailing or these Sailing Instructions.

- 1.7. The International Regulations for Preventing Collisions at Sea 1972 (COLREGS) apply at all times. The Racing Rules of Sailing apply only between boats that are racing and only while they are racing, as defined in the RRS. When a boat racing encounters a vessel that is not racing, or any commercial, recreational, or government vessel not participating in the event, COLREGS shall apply and shall take precedence over the Racing Rules of Sailing. Competitors are reminded that compliance with COLREGS is a legal obligation and may be enforced by statutory authorities independently of these Sailing Instructions.
- 1.8. A minimum of five (5) boats across all Divisions is required for the first race of the day to be started. A minimum of three (3) boats across all Divisions is required for subsequent races to be started. If fewer than the required number of boats are present before the warning signal, the Race Committee may abandon the race. This changes RRS 32.1.
- 1.9. RRS Appendix T (Arbitration) applies.
- 1.10. All competitors are reminded of RRS 1.1 “Helping those in danger” – a boat, competitor or support person shall give all possible help to any person or vessel in danger.
- 1.11. Attention is drawn to RRS 3 which states: “The responsibility for a boat’s decision to participate in a race or to continue racing is hers alone”.
- 1.12. RRS Appendix WP (Rules for Racing Around Waypoints) applies only when advised by the Race Committee at the Compulsory Skipper’s Briefing.



2. ELIGIBILITY

- 2.1. Offshore Division races are open to all Monohull and Multihull Yachts (both trailable and fixed keel) on the register of a yacht or sailing club, affiliated with Australian Sailing.
- 2.2. All yachts must comply with the AS Special Regulations Part 1 for Category 4 events. Spot check audits may be conducted at random throughout the season.
- 2.3. All boats shall supply at time of entry a current AS SR Equipment Audit Form Category 4 (or higher) that has been certified by an approved AS Club / National Equipment Auditor. AS SR Equipment Audit forms are available from the OA website.
- 2.4. Off the Beach classes are not permitted.
- 2.5. It is the responsibility of the Person in Charge to ensure all crew hold a current membership of Australian Sailing or a national authority recognised by World Sailing. Please visit the Australian Sailing website at <https://www.sailing.org.au/finder/> for validity.
- 2.6. The Organising Authority may reject or cancel the entry of a boat in accordance with RRS 76.1.

3. CHANGES TO SAILING INSTRUCTIONS

- 3.1. Changes to these Sailing Instructions will be posted on the Official Noticeboard not less than ninety (90) minutes before the first warning signal of the day, except that any change to the schedule of races will be posted by 1800 hours on the day before it will take effect.
- 3.2. Changes may also be made to the Sailing Instructions prior to the first warning signal by displaying Code Flag L on the Race Committee vessel and advising of the change by radio on VHF 09.

4. COMMUNICATIONS WITH COMPETITORS

- 4.1. Notices to competitors will be posted on the Official Noticeboard, located at the SYC Main Beach Clubhouse.
- 4.2. On the water, the race committee intends to monitor and communicate with competitors on VHF radio channel 09 and may use SMS to broadcast notices.
- 4.3. Except in an emergency, a boat shall not make voice or data transmissions and shall not receive external communications other than those permitted by RRS 41.

5. SIGNALS MADE ASHORE

- 5.1. Signals made ashore will be displayed on the official flagpole located adjacent to the SYC Main Beach Club house on the Quarter Deck.
- 5.2. When flag AP is displayed ashore, “1 minute” is replaced with “not less than 60 minutes” in the face signal AP.
- 5.3. When a visual signal is displayed over a Divisional flag, it applies to that Division only.

6. SCHEDULE OF RACES

- 6.1. The schedule of races is in accordance with “OD – OFFSHORE DIVISION SCHEDULE May 2026 – April 2027” at the beginning of these SI’s.
- 6.2. A Compulsory Skipper’s briefing will be held at 09:00hrs Summer Series and 10:00hrs Winter Series at SYC Main Beach Clubhouse. Skippers may also attend the briefing by phone.
- 6.3. **On Windward/Leeward and IRC Super Series race days, no warning signal shall be made after the time advised at the Compulsory Skippers Briefing.**
- 6.4. **For Windward/Leeward and IRC Super Series race days, no more than three (3) races will be sailed.**



EVENT	COMPULSORY SKIPPERS BRIEFING	STARTING SIGNAL
Summer Series	09:00hrs	Not Before 11:00hrs
Winter Series	10:00hrs	Not Before 12:00hrs

7. DIVISIONAL FLAGS

There will be two Divisions. Boats will be allocated to a Division by the Race Committee prior to commencement of racing and this allocation will remain in place for all applicable races unless otherwise advised by the Race Committee.

FLEET	SCORING	FLAG
Division 1 - Passage, Short Passage & W/L	ORC Club, IRC, PHS	Numeral Pennant 1
Division 2 - Passage, Short Passage & W/L	ORC Club, IRC, PHS	Numeral Pennant 2
All Divisions	ORC Club, IRC, PHS	Code Flag T
IRC Super Series	IRC Scoring	Numeral Pennant 3

Windward/Leeward racing will be conducted within the existing Divisions unless otherwise advised. No separate divisional flag will be used unless specified at the Compulsory Skippers Briefing.

8. RACING AREA

Attachment C shows the approximate location of the racing area.

9. THE COURSES

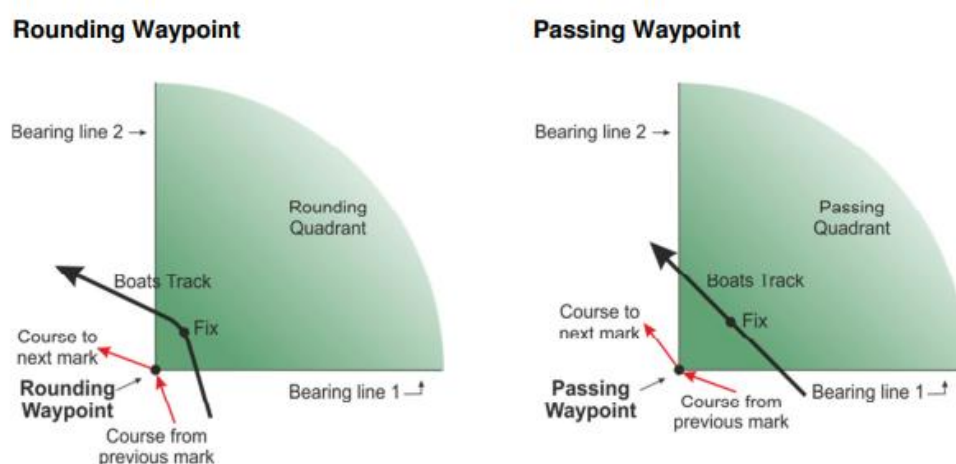
- 9.1. The courses are shown in Attachments A and B. The diagrams show the order in which marks are to be passed and the side on which each mark is to be left.
- 9.2. All GPS positions use the WGS84 datum.

10. MARKS

- 10.1. Marks and Buoys are described in the following Attachment A.
- 10.2. All Marks and Buoys are to be rounded to Port (P) unless otherwise stated by indication of (S) – Starboard.
- 10.3. If a designated Mark is missing or has shifted more than 200 Metres from its GPS position, then boats shall round the position using the GPS Coordinates as stated in Attachment A.
- 10.4. International Association of Marine Aids to Navigation and Lighthouse Authorities (IALA) marks are designated obstructions and shall not be used as course marks. Boats shall maintain a minimum distance of three (3) metres from such marks.



- 10.5. All boats shall give due consideration to the weather conditions, including tidal effect (current) wind conditions and their intended course when passing or rounding an IALA mark.
- 10.6. When Rounding or Passing Waypoints are used, the GPS Co-ordinates as listed in Attachment A are to be used.
- 10.7. Rounding or Passing Waypoint Marks have an associated rounding quadrant defined as the area enclosed between the two bearing lines (with 90 degrees between them) extending from the waypoint. A boat that provides a valid GPS fix within this quadrant is deemed to have rounded or passed the Waypoint Mark on the correct side.



11. OBSTRUCTIONS & PROHIBITED AREAS

- 11.1 The finish line is an obstruction, except for a boat that is finishing.
- 11.2 All coastline “Shark Nets” are to be passed to seaward and are designated obstructions.
- 11.3 For the purposes of RRS 19 & 20, “Wonder Reef” – the Gold Coast dive attraction which is located 2.5 km east of Main Beach at approximately 27° 57.70’ S, 153° 27.30’ E is a continuing obstruction and a prohibited area. This area is defined with four (4) yellow special marker buoys with the following co-ordinates, should they be missing:
- | | | | | |
|----|-----------|--------------|------------|--------------|
| NE | Latitude: | 27° 57.459’S | Longitude: | 153°27.432’E |
| NW | Latitude: | 27° 57.453’S | Longitude: | 153°27.188’E |
| SE | Latitude: | 27° 57.742’S | Longitude: | 153°27.431’E |
| SW | Latitude: | 27° 57.749’S | Longitude: | 153°27.187’E |

A boat shall not sail into a prohibited area.

- 11.4 All Queensland wave monitoring sites have an enforceable 100 metre exclusion zone around each wave buoy which is a prohibited area. Wave monitoring sites are located at:
- | | | | | |
|-------------|-----------|---------------|------------|----------------|
| Brisbane: | Latitude: | 27° 29.230’ S | Longitude: | 153° 37.900’ E |
| Gold Coast: | Latitude: | 27° 57.914’ S | Longitude: | 153° 26.555’ E |
| Palm Beach: | Latitude: | 28° 05.956’ S | Longitude: | 153° 29.073’ E |
| Bilinga: | Latitude: | 28° 08.581’ S | Longitude: | 153° 30.646’ E |

A boat shall not sail into a prohibited area.

12. THE START

- 12.1. Races will be started by using RRS 26 with the warning signal made 5 minutes before the starting signal.



- 12.2. The starting line is between a staff displaying an orange flag on the start vessel at the starboard end and the course side of the port-end starting mark.
- 12.3. The Start/Finish line positions will be described at the Compulsory Skipper's Briefing and may change compared to Attachment B diagram.
- 12.4. The order of starts between Divisions or Classes will be advised at the Compulsory Skippers Briefing.**
- 12.5. Boats whose warning signal has not been made shall avoid the starting area during the starting sequence for other races.
- 12.6. If any part of a boat's hull is on the course side of the starting line at her starting signal and she is identified, the Race Committee may attempt to broadcast her sail number on VHF Channel 09. Failure to broadcast, or to timing inaccuracies in such a broadcast, shall not be grounds for redress. This changes RRS 62.1(a).
- 12.7. A boat that has not started within ten (10) minutes after her starting signal shall be scored Did Not Start (DNS). This changes RRS A5.1.

13. CHANGE OF THE NEXT LEG OF THE COURSE

- 13.1. The Race Committee may change a leg of the course that begins at a rounding mark or at a gate by changing the position of the next mark (or the finishing line) and signalling all boats before they begin the leg. The next mark need not be in position at that time.

14. SHORTENED COURSE

Race Committee may shorten the course in accordance with RRS 32.2. When shortened, boats shall finish between a Race Committee vessel displaying Code Flag S and a nearby mark or finishing mark.

15. THE FINISH

- 15.1. The finishing line for each race shall be advised at the Compulsory Skippers Briefing and will be established in accordance with these Sailing Instructions;
- 15.1.1. Between a staff displaying a blue flag on the finishing boat at the eastern end and the finishing mark on the western end, or;
- 15.1.2. Between the end of the Sand Pumping Jetty and the finishing mark, or;
- 15.1.3. Between the end of the Sand Pumping Jetty and a staff displaying a blue flag on the finishing boat, or;
- 15.1.4. The imaginary line formed from the eastern end of the Sand Pumping Jetty and coordinates at 27° 56.315'S | 153° 26.500'E.
- 15.1.5. Changed when comparing to the Attachment B diagram.
- 15.2. When advised at the Compulsory Skipper's Briefing, boats may be required to record and declare their own finish time by SMS to the number advised. Failure to declare a finish time may result in a discretionary scoring penalty (DPI), subject to a hearing.
- 15.3. Except when finishing, the finishing line is an obstruction.
- 15.4. A boat that does not finish in accordance with RRS 28.1 may be scored Did Not Finish (DNF).
- 15.5. Where there is any conflict between a finish line description shown in an Attachment, diagram, or written Sailing Instruction, the finish line description advised at the Compulsory Skippers Briefing shall apply.

16. PENALTY SYSTEM

- 16.1. Rule 44.1 is changed so that the Two-Turns Penalty is replaced by a One-Turn Penalty.



17. TARGET TIMES & TIME LIMITS

17.1. The Mark 1 Time Limit, Race Time Limit (See RRS 35), and the Finishing Window are shown in the table below and applies to each Division.

COURSE TYPE	MARK 1 TIME LIMIT	RACE TIME LIMIT	FINISHING WINDOW
Short Passage	45 mins (0.75hrs)	4hrs	45 mins (0.75hrs)
Passage Series	150 mins (2.5hrs)	6hrs	120 mins (2hrs)
Windward/ Leeward	45 mins (0.75hrs)	2hrs	45 mins (0.75hrs)

17.2. If no boat has passed the first mark within the Mark 1 Time Limit, the race will be abandoned.

17.3. A boat finishing after the Finishing Window shall be scored Time Limit Expired (TLE).

17.4. A TLE score shall be points equal to two more than the number of boats that finished within the time limit. This changes RRS 35 and Appendix A.

17.5. The Race Committee may, at its discretion, offer a boat still racing the option of accepting a Time Limit Expired (TLE) score. This changes RRS 35 and Appendix A5.

18. PROTEST AND REQUESTS FOR REDRESS

18.1. Immediately after finishing a boat intending to protest shall, in addition to the requirements of RRS 61.1(a), inform the race committee boat at the finish line of her intention to protest and the identity of the boat(s) protested against. The protesting boat must receive an acknowledgement from the race committee. This changes RRS 61.

18.2. RRS Appendix T (Arbitration) applies. Arbitration is intended to provide a timely, informal, and efficient resolution process for incidents that do not involve serious damage, injury, or alleged breaches of fundamental rules. A boat accepting an arbitration decision will be penalised in accordance with Appendix T and will not receive a protest hearing. A boat that does not accept an arbitration decision is entitled to a full protest hearing in accordance with the Racing Rules of Sailing. Refer to the SYC Sailing Season Policy for further details on the arbitration process.

18.3. Hearing request forms are available at the Reception of the SYC Main Beach Clubhouse and available from the OA website.

18.4. The Protest time Limit is two hours (120) minutes after the last boat has finished the last race for the day in her Division. The same protest time limit applies to all protests by the Race Committee and the Protest Committee, and to requests for redress. This changes Rules 61.3 and 62.2.

18.5. Notices will be posted according to the SYC Sailing Season Policy.

18.6. Decisions made by the Race Committee or Protest Committee will be emailed to parties to the hearing under Rule 65.1

18.7. A boat may not protest another boat solely for an alleged failure to comply with the safety reporting or administrative requirements of SI 20 (Safety Regulations). This changes RRS 60.1.

19. SCORING

19.1. The Low Point Scoring System of RRS Appendix A applies.

19.2. A boat scored Did Not Finish (DNF) shall be scored one (1) point more than the number of boats that started. This changes RRS Appendix A5.2.

19.3. A boat scored Did Not Compete (DNC) shall be scored two (2) points more than the number of boats entered. This changes RRS Appendix A5.2.

19.4. Two (2) races are required to constitute a series. When fewer than five (5) races have been completed, all scores shall count.



- 19.5. Only races that are started and not abandoned shall be counted as races for the purposes of constituting a series.
- 19.6. When five (5) to eight (8) races have been completed, a boat's series score will be the total of her race scores, excluding her worst score.
- 19.7. When nine (9) to twelve (12) races have been completed, a boat's series score will be the total of her race scores excluding her two (2) worst scores.

20. SAFETY REGULATIONS

Pre-Race Safety Requirements:

- 20.1. All Boats shall "Log-On" with Gold Coast Seaway Tower on VHF73, providing the Boat Name, Sail Number, Persons-on-Board (POB), Mobile Number, Vessel Registration Number and Estimated Time of Return (ETR) **PRIOR** to departing the Gold Coast Seaway.
- 20.2. All boats shall "Sign On" with Race Control (when on-station) **BEFORE** the first Warning Signal on VHF09, advising their Boat Name, Sail Number and Persons-on-Board (POB). Race Control will confirm their recorded details for confirmation of "Sign On".

Post-Race Safety Requirements:

- 20.3. A boat that retires from a race, shall notify Race Control as soon as possible. This must be via VHF09, if Race Control is still on station **OR** by texting mobile phone as advised at the **Compulsory** Skipper's Briefing advising of their exact location and their intentions of travel.
- 20.4. All boats shall "Log Off" with Gold Coast Seaway Tower on VHF73 immediately upon safety returning through the Gold Coast Seaway.

Safety Compliance & Penalties:

- 20.5. A boat shall **NOT** carry anchors protruding beyond the bow whilst racing.
- 20.6. Failure to comply with these Safety Regulations may result in a discretionary scoring penalty (DPI) of 20% of the boat's score for that race, rounded to the nearest whole number (0.5 rounded upwards).
- 20.7. Failure to display clearly identifiable sail numbers in accordance with RRS Appendix G may result in a discretionary scoring penalty (DPI).
- 20.8. When advised, at a Compulsory Skippers Briefing, all yacht shall within 15 minutes of rounding or passing a Waypoint Mark, shall notify the Race Officer via text/mms to the number given at the Compulsory Skippers Briefing providing: The Yachts Name AND Photograph of an instrument displaying the fix and time of the Rounding or Passing the Waypoint Mark within the Rounding Quadrant

21. EQUIPMENT AND MEASUREMENT CHECKS

IRC SUPER SERIES:

- 21.1. **Boats competing in the IRC Super Series shall hold a valid current IRC certificate for the boat as raced.**
- 21.2. **The number of crew carried shall not exceed the maximum number permitted by the boat's IRC certificate.**
- 21.3. **No crew declarations are required to be submitted for IRC Super Series racing.**
- 21.4. **Sails shall comply with the boat's IRC certificate. No additional sails (including additional spinnakers) are permitted beyond those declared or endorsed on the certificate.**
- 21.5. **Boats competing in the IRC Super Series may be inspected for compliance with IRC certification, sail inventory, and these Sailing Instructions. This is in addition to any inspection carried out under SI 21.**
- 21.6. A boat or equipment may be inspected at any time for compliance with the Sailing Instructions. On the water, a boat can be instructed by a Race Committee Equipment Inspector, Safety auditor or Measurer to proceed immediately to a designated area for inspection.
- 21.7. RRS 52 is not applicable.



22. OFFICIAL BOATS

Official boats will be marked with the SYC Burgee.

23. RUBBISH DISPOSAL

Boats shall not put rubbish in the water. Rubbish may be placed aboard support and Race Committee boats.

24. TRACKING DEVICES

- 24.1. Boats competing may be required to carry onboard a tracking device supplied by the Organising Authority (OA).
- 24.2. When carried, the tracking device shall be:
 - (a) installed, operated, and maintained in accordance with the OA's instructions; and
 - (b) kept powered on and operational for the duration of racing or as directed by the OA.
- 24.3. Tracking devices supplied by the OA remain the property of the OA and shall be returned to the OA or its representative as soon as practicable after completing racing, unless otherwise advised.

25. PRIZES

- 25.1. Daily prizes will be awarded based on PHS corrected time results for the combined Series Scores of each race day.
- 25.2. Subject to the number of boats competing in a division on the day, prizes may be awarded for 1st, 2nd and 3rd places.
- 25.3. The number of prizes awarded in each Division on any race day shall be at the discretion of the Organising Authority.
- 25.4. Other prizes may be awarded at the discretion of the Organising Authority.

26. PERPETUAL PRIZES

- 26.1. SYC Perpetual Trophies will be awarded to ORC Club/ORCi /IRC scoring results to the overall series winners
- 26.2. The annual Sailing Presentation will take place at a Clubhouse of SYC.
- 26.3. Other prizes may be awarded at the discretion of the OA.

27. DISCLAIMER OF LIABILITY

- 27.1. All those taking part in races conducted by SYC, do so at their own risk and responsibility.
- 27.2. The SYC, any sponsor and any party involved in the organisation of any event, disclaims any and every responsibility for any loss, damage, injury to persons and/or things, both ashore and at sea, because of participation in any way in the races covered by these Sailing Instructions.
- 27.3. Attention is drawn to RRS 3, which states: "The responsibility for a boat's decision to participate in a race, or to continue racing is hers alone.

28. INSURANCE

Each participating boat shall be insured with valid third-party liability insurance, with a minimum cover of \$10 million for any one incident. By taking part in a race, all boat owners are deemed to have made a declaration that they have such cover.



29. MEDIA RIGHTS

In participating in the Offshore Division Club Racing, a competitor grants to the OA and the sponsors, the right, in perpetuity, to make, reproduce, edit, use and show, from time to time and at the discretion, any motion pictures, still pictures and live, taped or film television and other reproductions of him/her taken during the Sailing Season and to use his/her likeness, voice, name and any other information in any material related without compensation.

30. SYC SAILING COMMITTEE

SYC Vice Commodore of Sail:

Wayne Kirby | 0418 950 250 | wayne@kirbyfamily.id.au

SYC Head of Racing:

Steven Murphy | 0475 434 800 | headofracing@sycgc.com.au

OD - Offshore Division Representative:

Barry Berg | 0400 110 555 | barry.wildstyle@gmail.com

HC – Handicap Committee Representatives:

Russell Birse | racing.admin@sycgc.com.au

31. SYC SAILING CONTACTS

SYC Racing Coordinator:

Kayla Boothby | 0481 711 950 | racing.coordinator@sycgc.com.au

SYC Volunteers Coordinator:

Mike Latter | 0499 941 982 | volunteers@sycgc.com.au

SYC Hollywell Sailing Office:

(07) 5537 7030 | racing.admin@sycgc.com.au

32. PARENT CONSENT FORM



Parent Consent Form

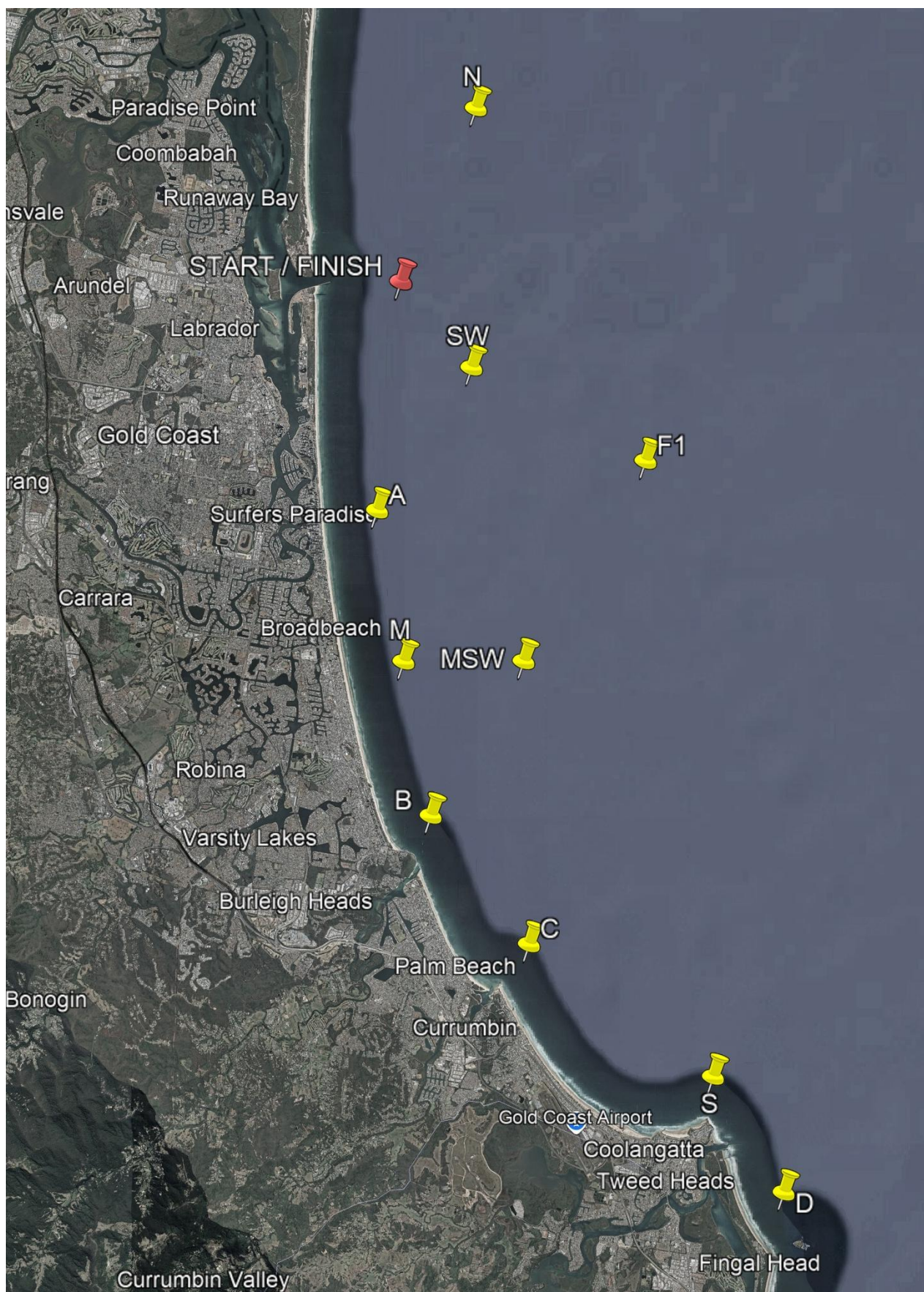
For participants under 18 years old.

Scan QR Code / Click the link

<https://form.jotform.com/253497312363055>



ATTACHMENT A - SYC OFFSHORE RACING AREA





ATTACHMENT B – MARKS, BUOYS & COURSES

DESIGNATED MARKS	LOCATION	Approximate GPS COORDINATES	RRS Appendix WP- Quadrant between bearing lines (if used)
Offshore Start/Finish	Approx. 1NM South of Sand Pump Jetty	27° 56.400'S, 153° 27.230'E	
A	Surfers Mark	28° 00.135'S, 153° 26.800'E	180° and 270° when heading in a Southerly direction. 0° and 270° when heading in a Northerly direction.
B	Burleigh Mark	28° 05.100'S, 153° 27.800'E	180° and 270° when heading in a Southerly direction. 0° and 270° when heading in a Northerly direction.
C	Currumbin Mark	28° 07.300'S, 153° 29.500'E	180° and 270° when heading in a Southerly direction. 0° and 270° when heading in a Northerly direction.
D	Cook Island Mark	28° 11.200'S, 153° 34.300'E	180° and 270°
E	Laid Mark	As described at Briefing	
F1	Offshore FAD1	27° 59.33'S, 153° 31.75'E	
M	Mermaid Mark	28° 2.596S 153° 27.293E	
MSW	Mermaid Seaward Mark	28° 2.593S 153° 29.504E	
N	Northern Mark	27° 53.560'S, 153°28.610'E	180° and 270°
S	Snapper Mark	28° 09.330'S, 153° 33.000'E	180° and 270°
SW	Seaward Mark	27° 57.805'S, 153°28.536'E	180° and 270°
X	Laid Clearance Buoy (If Used)	Approx. 0.8NM to windward of the Start Line	



BUOY	DESCRIPTION
START	Orange Inflatable cylinder with Black Top
FINISH	Orange Inflatable cylinder
A / X / E	Orange Inflatable Cone or Yellow Cylinder
B, C, D, S	Orange Inflatable Cone or Yellow Cylinder
Barging Buoy	Pink Teardrop

ATTACHMENT C – COURSES

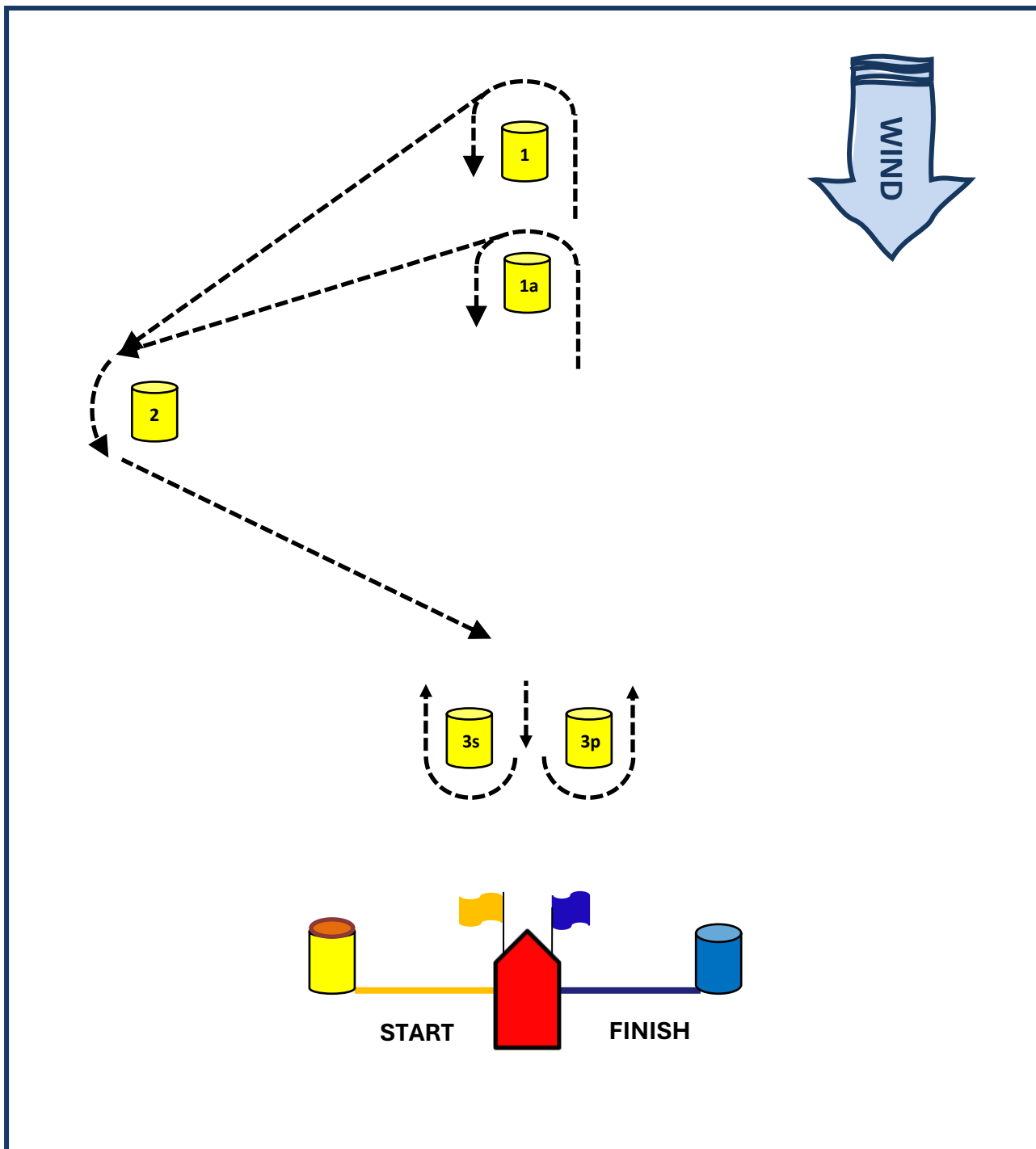
Note: When Windward/Leeward and Triangular courses are being sailed, the Race Committee may designate **Mark 1a** as the windward mark for **Division 2** in place of Mark 1. This will be advised at the Compulsory Skippers Briefing and/or displayed on the course board.

COURSE	MARK ROUNDINGS	TYPE
X1	A Course set by the Race Committee as advised at the Compulsory Skippers Briefing	PASSAGE
W1	START – 1 – FINISH	W/L
W2	START – 1 – 3s/3p – 1 – FINISH	W/L
W3	START – 1 – 3s/3p – 1 – 3s/3p – 1 – FINISH	W/L
T1	START – 1 – 2 – FINISH	W/L
TL2	START – 1 – 2 – 3p – 1 – FINISH	W/L
TL3	START – 1 – 2 – 3p – 1 – 3p/3s – 1 – 2 – FINISH	W/L



ATTACHMENT D – OFFSHORE COURSE DIAGRAMS

WINDWARD/LEEWARD & TRIANGULAR COURSE



The Start/Finish line and buoys may change & will be confirmed at the Compulsory Skippers Briefing.